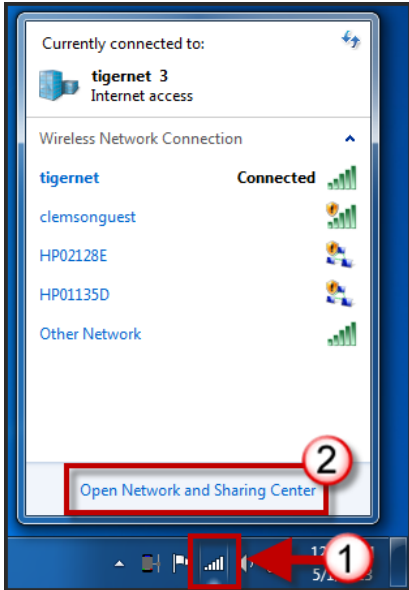


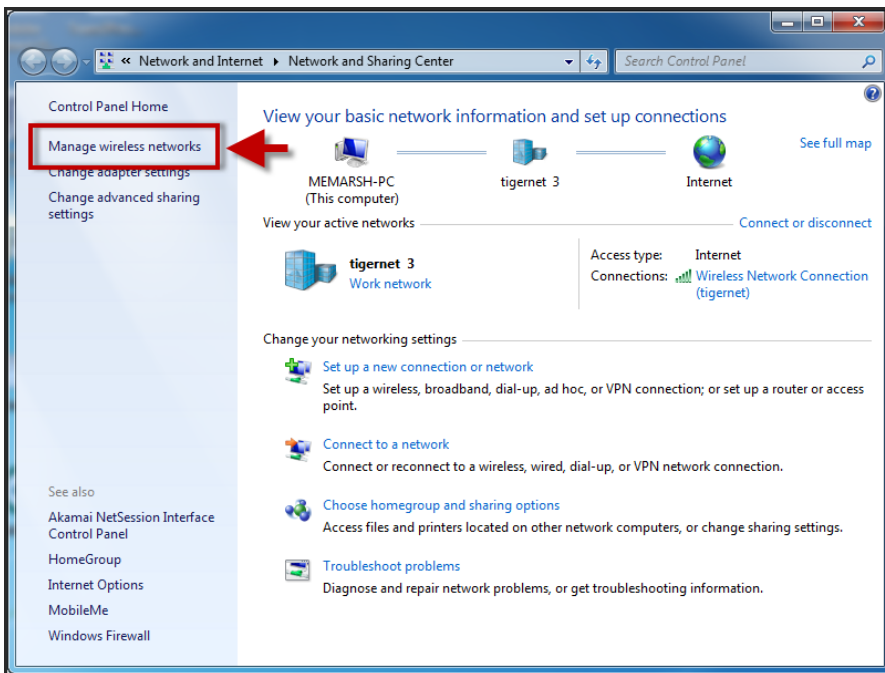
Windows 7 Profile Setup

eduroam

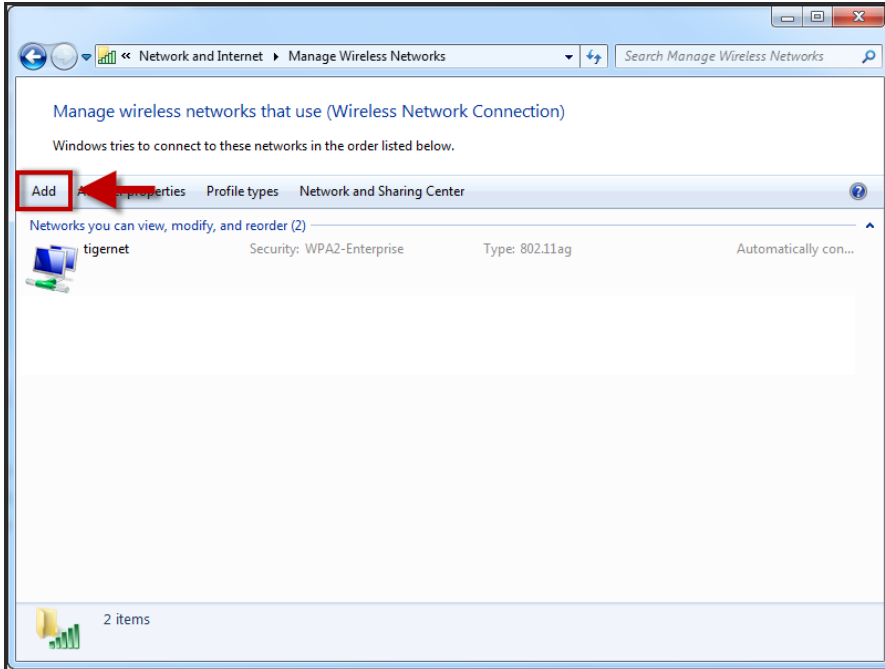
1. Click on the **Network** icon in the Windows taskbar.



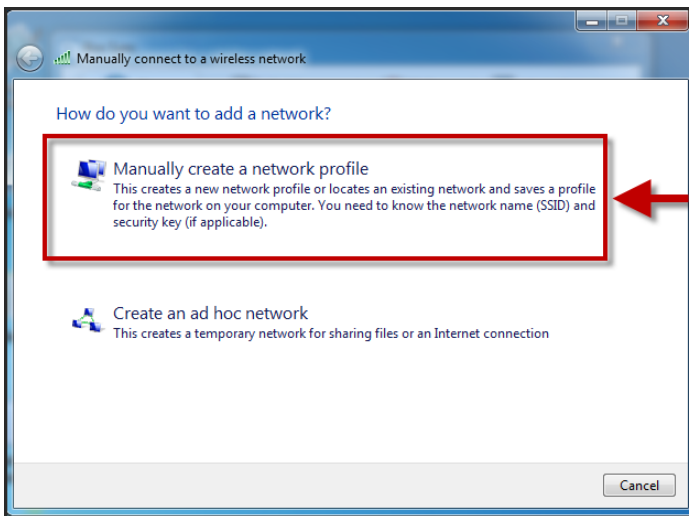
2. Click **Open Network and Sharing Center**.
3. Click **Manage Wireless networks**.



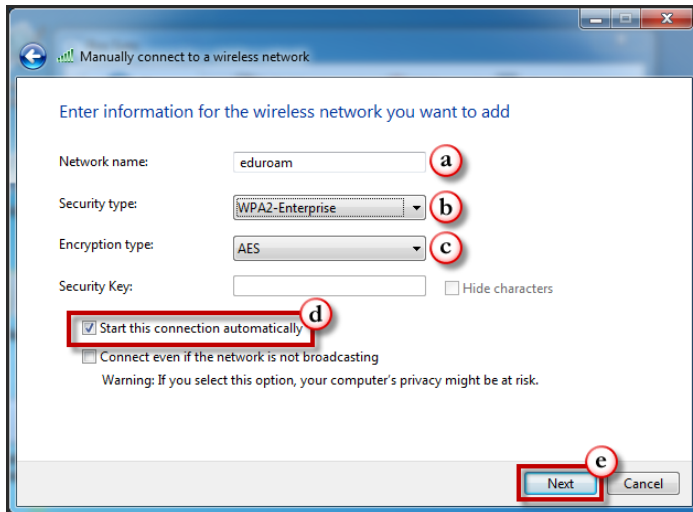
4. Click **Add**.



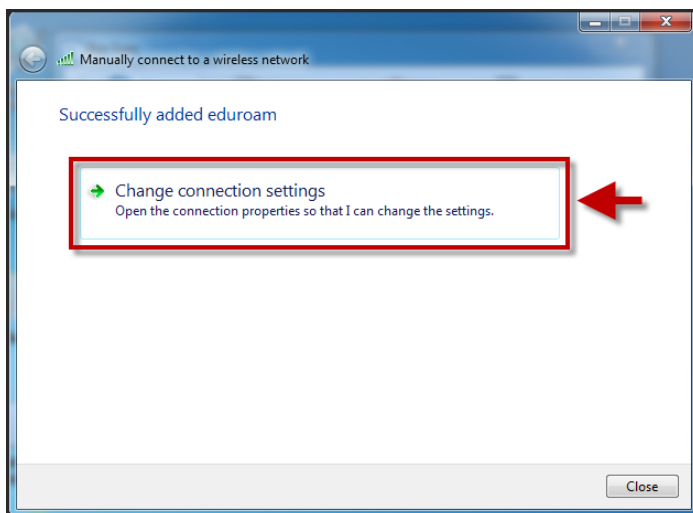
5. Click **Manually create a network profile**.



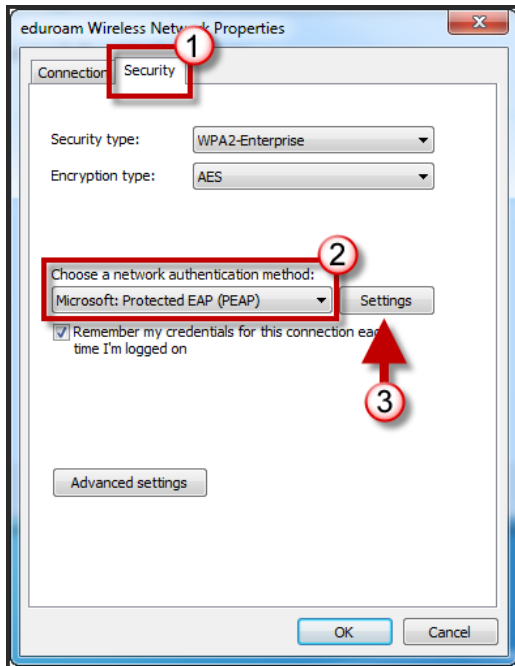
eduroam – Windows 7 Profile Setup



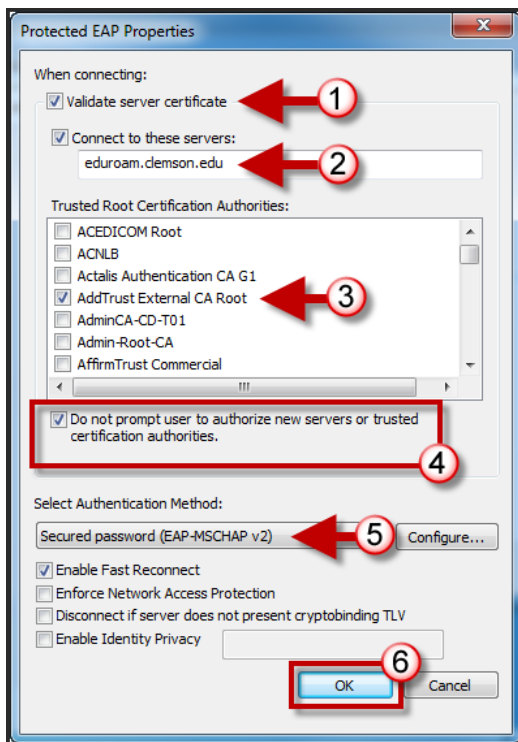
6. Enter the following information in the form provided
 - a. **Network Name:** eduroam
 - b. **Security Type:** WPA2-Enterprise
 - c. **Encryption type:** AES
 - d. Enable the checkbox for **Start this connection automatically**.
7. Then click **Next**.



8. Click **Change Connection Settings**.

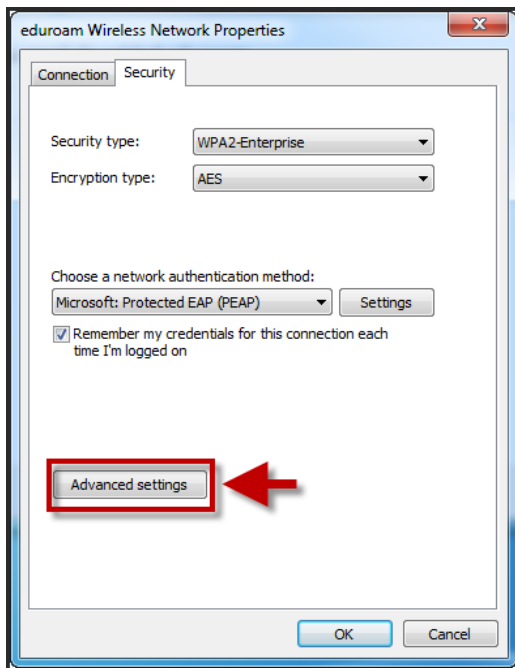


9. Click the **Security** tab.
10. Select **Microsoft Protected EAP (PEAP)** from the available drop down list for network authentication method.
11. Then click **Settings**.

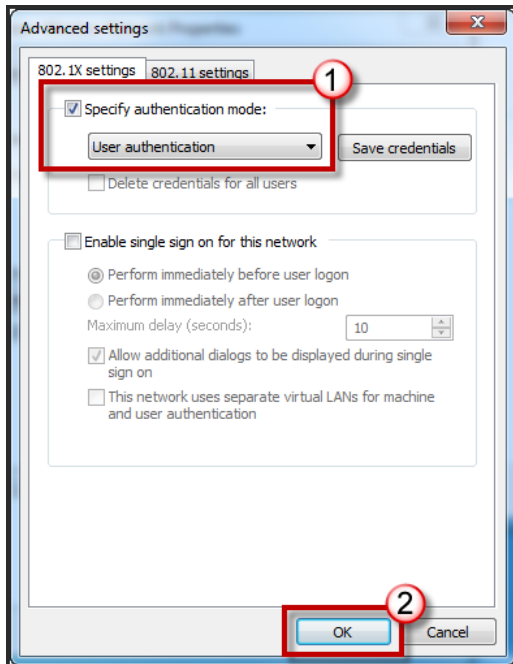


12. Enable the checkbox for **Validate server certificate**.

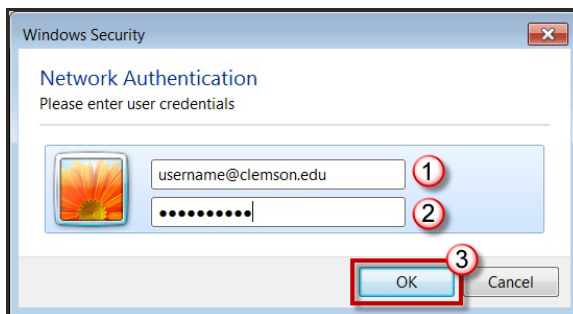
13. Enable the checkbox for **Connect to these servers:**. Then in the field provided enter **eduroam.clemson.edu**.
14. Under the Trusted Root Certification Authorities section, enable the checkbox for **AddTrust External CA Root**.
15. Enable the checkbox for **Do not prompt user to authorize new servers or trusted certification authorities**.
16. From the Select Authentication Method drop down list, select **Secured Password (EAP/MSCHAPv2)**.
17. Click **OK**.



18. Click **Advanced Setting**.



19. Select the checkbox for **Specify authentication mode**.
20. Then select **User authentication** from the available drop down list.
21. Click **OK**.
22. Click **OK** again.
23. Click **Close**.



24. When prompted, login to the eduroam network with your **username@clemson.edu** and **password**.
25. Then click **OK**.