

New Features of Adobe Connect 8

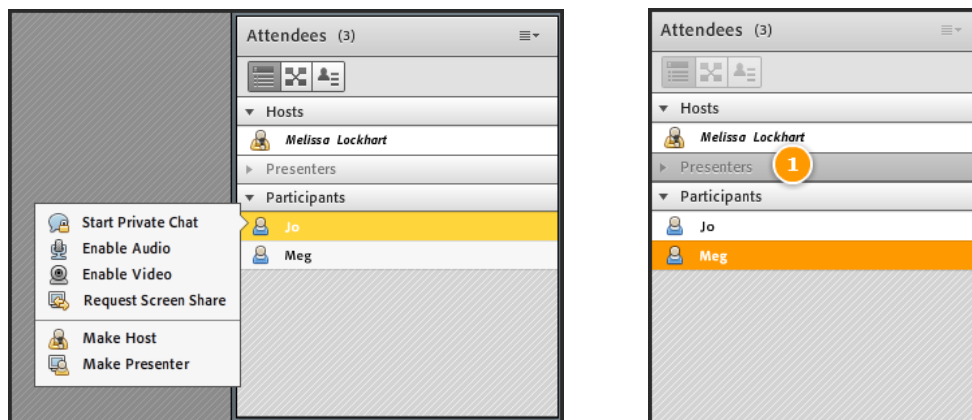
- Optimized screen use.....1
- Drag-and-drop for easier navigation and management1
- Easily bring outside rich media directly to participants2
- Centralize meeting management controls.....3
- Smart audio and visual controls.....3
- Rich text formatting is now supported in the Notes pod4
- Enhanced Whiteboard functionality4
- Advanced chat5
- Separate Q&A Pod5
- Enable greater accessibility with keyboard commands5
- Support for additional Operating Systems.....6

Optimized screen use

Make conducting your meetings as smooth and seamless as possible with an intuitive interface. Adobe Connect 8 features automatic resizing and rescaling, so you’ll never lose onscreen real estate. Meeting interface no longer optimized for 4:3 Aspect ratio. Scales to your monitor and resolution.

Drag-and-drop for easier navigation and management

Streamline managing meetings in progress and optimize participant experiences by easily adding and moving meeting elements. Change meeting attendee roles using simple drag-and-drop, and get more people involved by instantly granting attendees rights to video, audio, or screen-sharing with basic mouse-over controls.

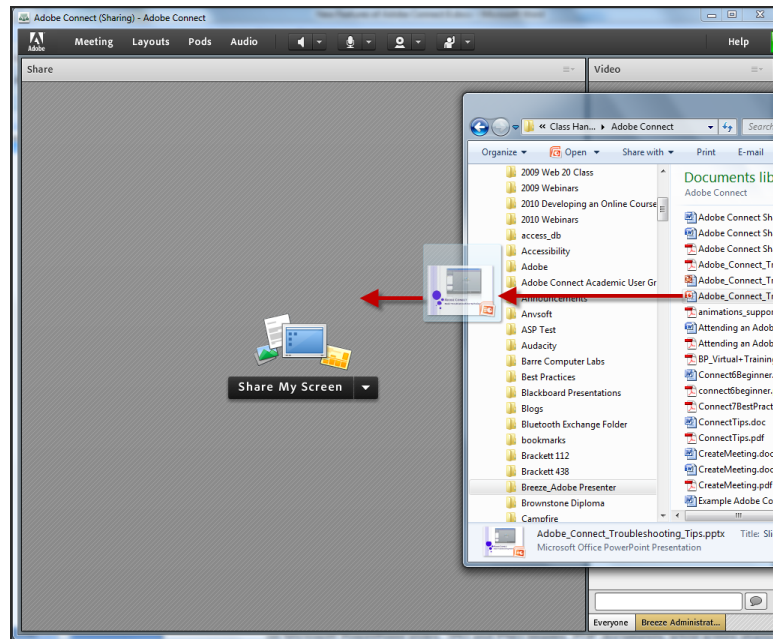


The Attendee List has been consolidated. You can now manage breakout rooms from the Attendee List. Check on users status from the new Attendee Status View. The new hover menu

allows you to change a participants role, start a private chat with the selected participant, or enable screen share, microphone, or video for selected participants. You can now drag and drop a user into a role to promote/demote them.

Easily bring outside rich media directly to participants

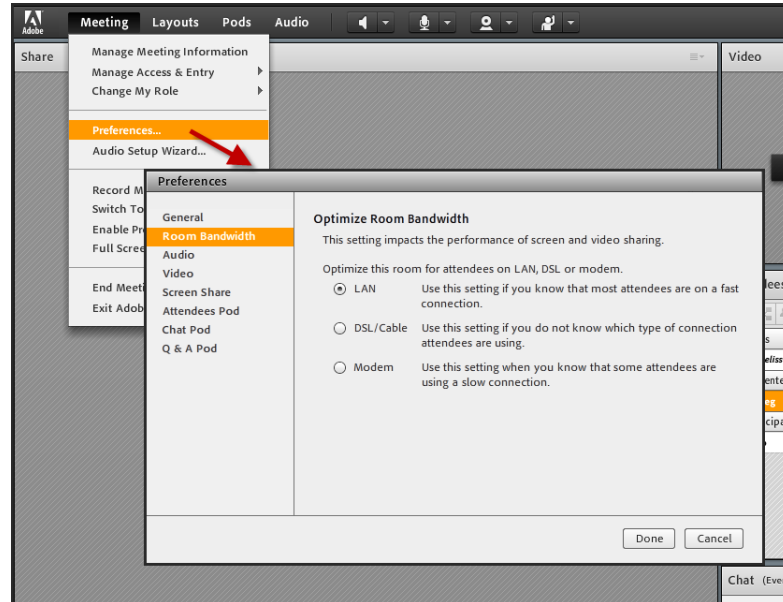
Provide participants with engaging, impactful experiences and improve overall meeting quality by simply dragging and dropping multimedia from external sources. Bring in rich animation, graphics, and high-quality video directly to your Adobe Connect 8 session and play them in full resolution.



Drag and drop documents to the share pod from your hard drive or upload them using the Share Document feature from the Share Pod drop down menu. The Share pod also now supports .PDF file format.

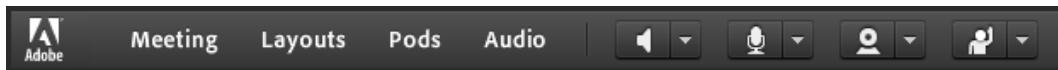
Centralize meeting management controls

Conveniently manage and display all your meeting preferences in a single place. Manage the look of meeting backgrounds, participant options, and settings such as screen share and webcam quality to enhance your meetings.



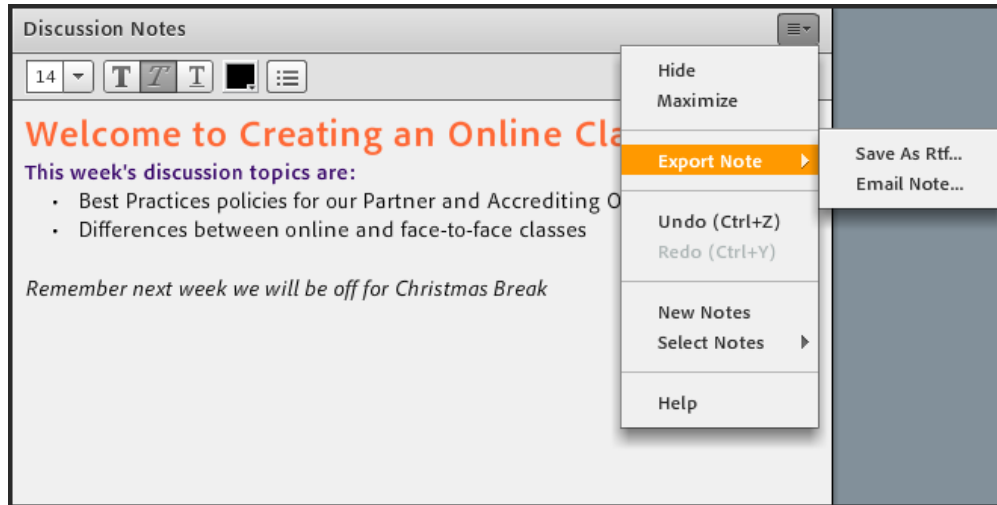
Smart audio and visual controls

Intuitive and prominent layout of audio and video controls simplifies adjusting the sights and sounds of your meetings from a single panel. Consolidated controls for audio and visual elements let you instantly fine-tune meeting experiences with the click of a button.



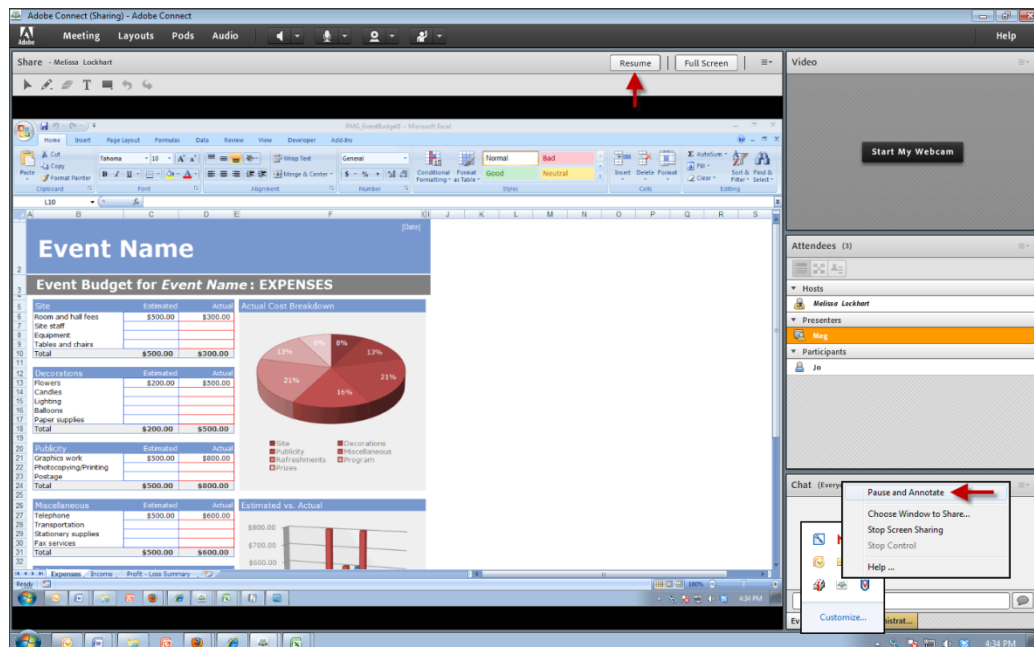
Rich text formatting is now supported in the Notes pod

Bring greater clarity and interactivity to your meetings with richer notes presented in bold, italics, or underline, or formatted with multiple colors and bullets. You can also save the Note pod to your hard drive or email a copy of it to multiple people.



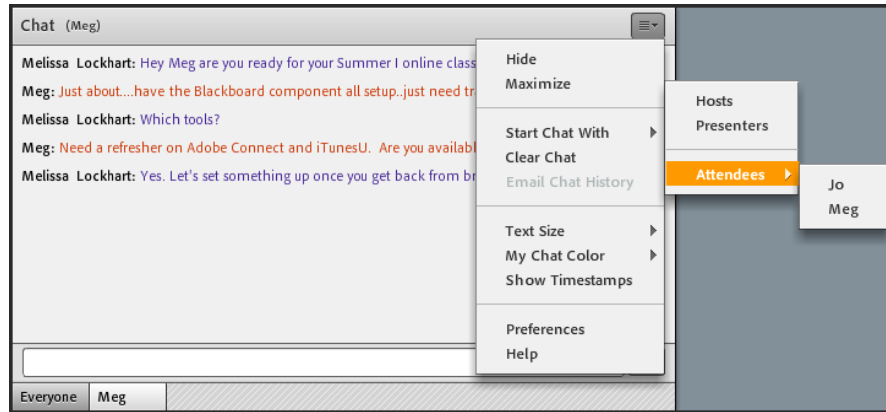
Enhanced Whiteboard functionality

In addition, enhanced whiteboard features offer streamlined use and greater control over graphics. You can whiteboard on Microsoft PowerPoint slides, JPG and PNG images, PDF documents, while screen sharing, and even on video.



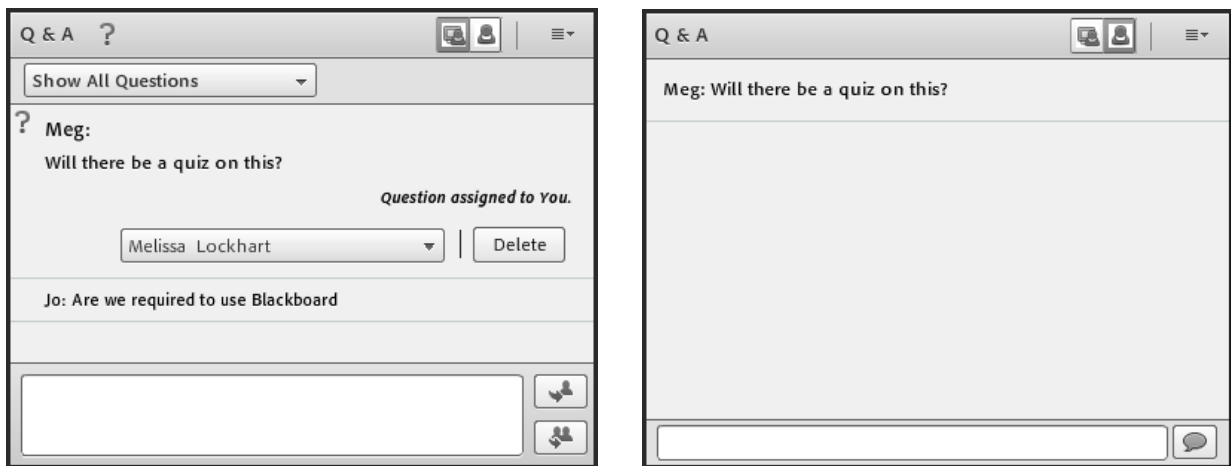
Advanced chat functionality

With more options for public and private chat, everyone can interact in exchanges tailored to their individual needs. Private chats are displayed in separate tabs, and you can change text color, making it easy to differentiate and manage multiple conversations. A new accessibility option allows students to increase the text size of the Chat pod for their computer.



Separate Q&A Pod

The Q&A pod is now a separate pod, it no longer has to be linked to a Chat Pod.



Enable greater accessibility with keyboard commands

The Adobe Connect 8 interface is [navigable by keyboard](#), significantly improving accessibility to meetings for people with impaired motor skills vision. The interface works with screen-readers for vision impaired to help ensure that anyone can participate in collaborative and virtual learning sessions.

With Adobe Connect 8, they have added complete access via the keyboard and simplified the navigation across all of the pods in a meeting. New shortcut key-combinations will help users jump directly to a specific pod like chat. Adobe Connect's compatibility with screen readers like JAWS and Win-Eyes is greatly improved. Powerpoint content is now exposed to screen readers and there is more accurate focus location tracking.

Support for additional Operating Systems

- Mobile support for Android- and iOS-based devices
- Support for Ubuntu on the Linux OS. Experience full-featured meeting host capabilities with a new add-in for Linux Ubuntu users. Now Linux users have the same capabilities Windows and Mac users do when hosting meetings.