

Respondus LockDown Browser

What is the Respondus LockDown Browser	1
Feature List.....	1
Uninstalling Prior Versions of the LockDown Browser	2
Downloading & Installing the Respondus LockDown Browser	3
Windows 7 (32-bit)	3
Mac.....	5
Updating the Respondus LockDown Browser to version 1.0.5.....	7
Windows (32-bit).....	7
Mac.....	7

What is the Respondus LockDown Browser

Respondus LockDown Browser is a custom browser that locks down the testing environment within Blackboard. When students use Respondus LockDown Browser, they are unable to print, copy, go to another URL, or access other applications. When an assessment is started, students are locked into it until they submit it for grading. It is available for both Windows and Mac.

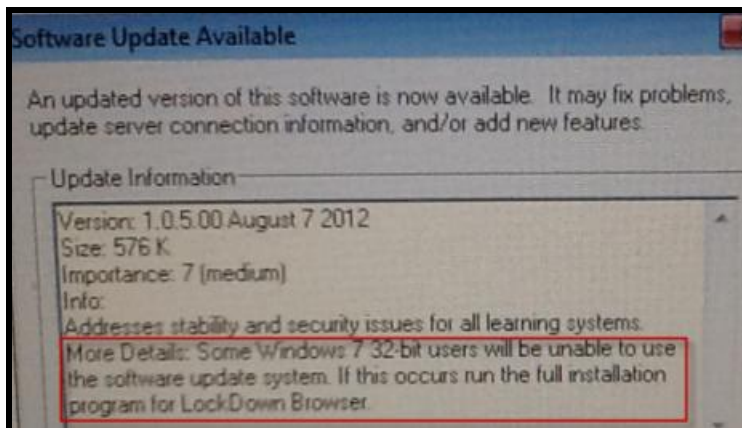
Feature List

- Integrates with Blackboard and other course management systems
- Assessments are displayed full-screen and cannot be minimized
- Assessments cannot be exited until submitted by students
- Task switching or access to other applications is prevented
- Print, Print screen and capturing functions are disabled
- Screen capture, messaging, screen-sharing, virtual machine, and network monitoring applications are blocked from running
- Right-click menu options and functions keys are disabled
- Browser menu and toolbar options are disabled
- Source code for the HTML page cannot be viewed
- The browser automatically starts at the login page of Clemson Blackboard
- URLs cannot be typed by the user
- External links do not compromise the locked testing environment

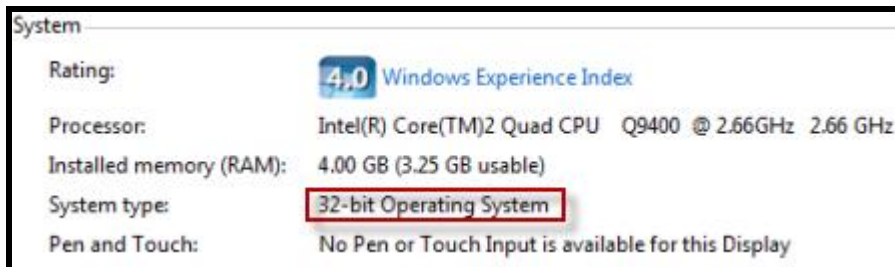
- Assessments that are set up for use with Respondus LockDown Browser cannot be accessed with other browsers

Uninstalling Prior Versions of the LockDown Browser

If your operating system is Windows 7 32-bit, you will see the following screen reminding you that a full installation is needed.



To check your operating system, go to **Start** menu, right-click **Computer**, then select **Properties**.



If your system is 32-bit, you will need to uninstall the old version of the Respondus Lockdown Browser.

To uninstall the Respondus Lockdown Browser:

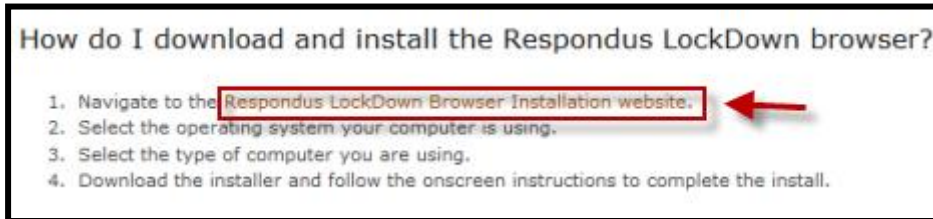
1. Go to Windows **Start Menu**.
2. Select **Control Panel**.
3. Click **Programs and Features**.
4. Select **Respondus LockDown Browser**.
5. Then click **Uninstall**.

Downloading & Installing the Respondus LockDown Browser

Windows 7 (32-bit)

To install the Respondus Lockdown Browser:

1. Open your web browser and navigate to the [Clemson Respondus LockDown Browser webpage](#).
2. Click Respondus LockDown Browser installation website link.

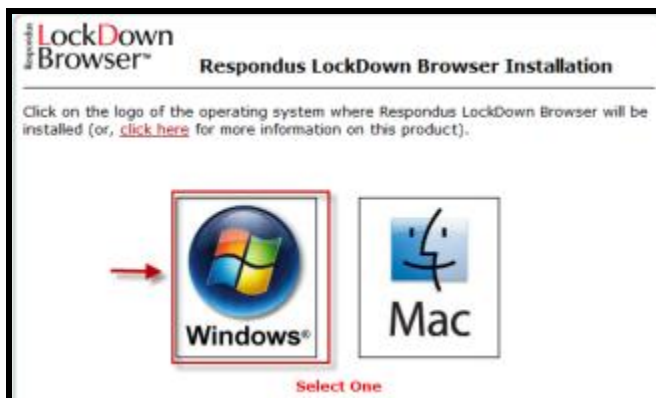


or click this direct link to install the application:

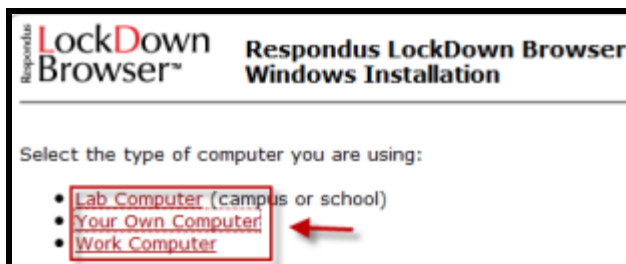
<http://www.respondus.com/lockdown/installw2own.pl?ID=548836813>

NOTE: Do not go to Respondus website: <http://www.respondus.com> to download the application. The links on their website are NOT the customized version that works with Clemson's Blackboard.

3. Select your operating system: **Windows**.



4. Select the type of computer you are using: **Lab Computer, Your Own Computer, or Work Computer**.



5. Click **Download Installer-Server 1**.



6. Click **Save File** to save the **LockDownSFX .exe** file on your computer.



7. Click **Run**.



8. Click the button to run the install for **Respondus LockDown Browser**.

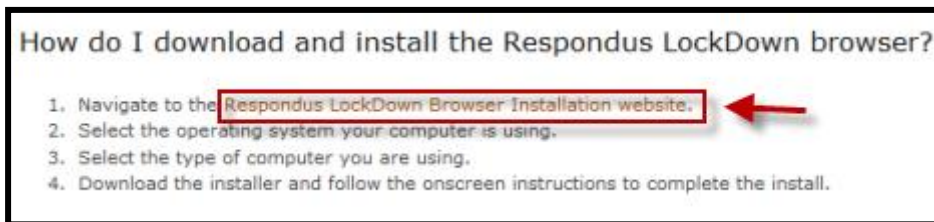


- After the installation, you will see a shortcut of the Respondus LockDown Browser on your desktop. You may also access it from **Windows icon → All programs → Respondus → LockDown Browser**.

Mac

To install the Respondus Lockdown Browser:

- Open your web browser and navigate to the [Clemson Respondus LockDown Browser webpage](#).
- Click **Respondus LockDown Browser installation website** link.



or click this direct link to install the application:

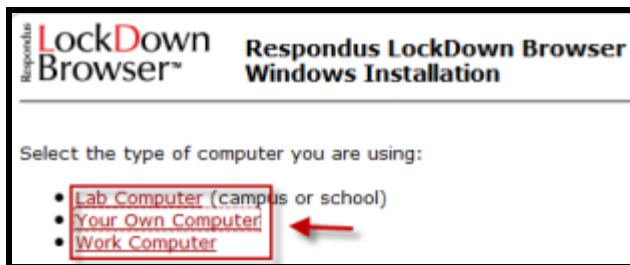
<http://www.respondus.com/lockdown/installw2own.pl?ID=548836813>

NOTE: Do not go to Respondus website: <http://www.respondus.com> to download the application. The links on their website are NOT the customized version that works with Clemson’s Blackboard.

- Select your operating system: **Mac**.



- Select the type of computer you are using: **Lab computer, your own computer, or work computer**.



5. Click **Install from Server 1** or **Install from Server 2**.



6. Run the extracted package file (**Install Respondus Lockdown Browser.pkg**)

7. Follow the instructions in the installer.



8. To locate Respondus Lockdown browser, open the **Finder**.

9. Click **Applications**.



10. Then double-click **Lockdown Browser**.

Updating the Respondus LockDown Browser to version 1.0.5

Windows (32-bit)


Respondus released version 1.0.5 of the LockDown Browser in August 2012. Students will need the new version to complete an assessment and to avoid some issues.

Issues that may be encountered if you are not using this version 1.0.5 of the LockDown Browser:

- Unable to move to the next question
- Unable to submit the test
- Cannot exit the LockDown Browser

You may update your old version of Respondus LockDown Browser to 1.0.5.

Here are the steps to update your old version:

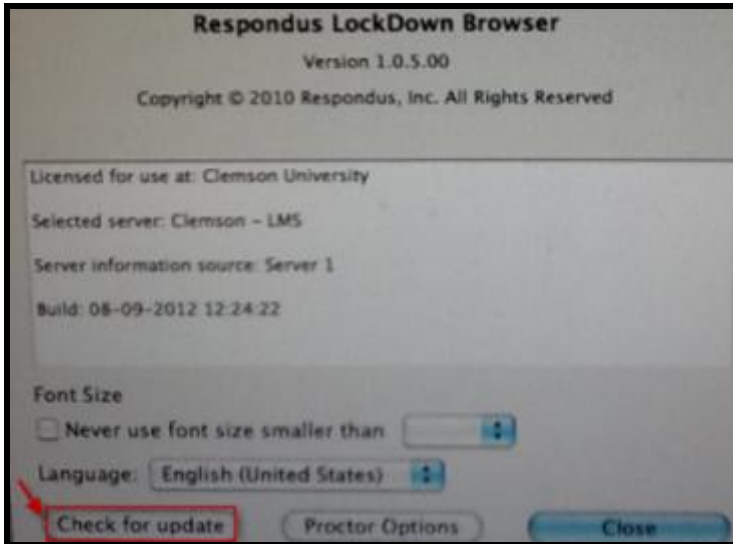
1. Open the LockDown Browser.
2. Click the **i** button () on the toolbar of the LockDown Browser.
3. Click **Check for New Version** to install the new version of 1.0.5.

Mac

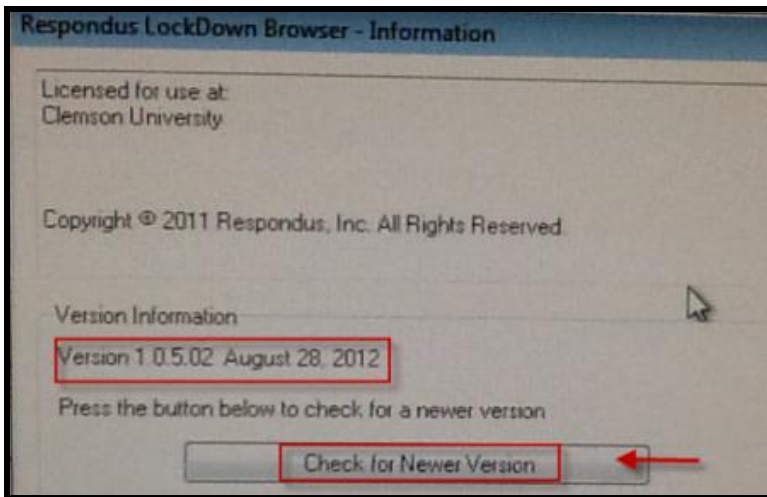
1. Open the Finder.
2. Click **Applications**.
3. Then double-click the **Lockdown browser**.
4. Click **About** on the toolbar.



5. Click **Check for Update** to update Lockdown browser.



6. Click **Check for Newer Version**.



7. Verify that the new version has been installed.
8. Open the Respondus LockDown Browser.
9. Click **About** on the toolbar of the LockDown Browser.
10. Check the version information. Verify that it says Version 1.0.5.02.