

Steve Fullerton – I am the manager of CCIT's Distributed Support Services group. I have been with the Clemson family now 5 years. I have 20+ years in IT customer support. I have been involved in supporting desktops for hardware/software, client side server support and support for server admins. Originally from the Maryland/Washington D.C. area and I am here by way of Columbus, OH.



Today's discussion will be about the new wireless SSID on campus. I will discuss why Clemson is moving to this SSID, what it provides our users, how it works and how to get support, both on and off campus.

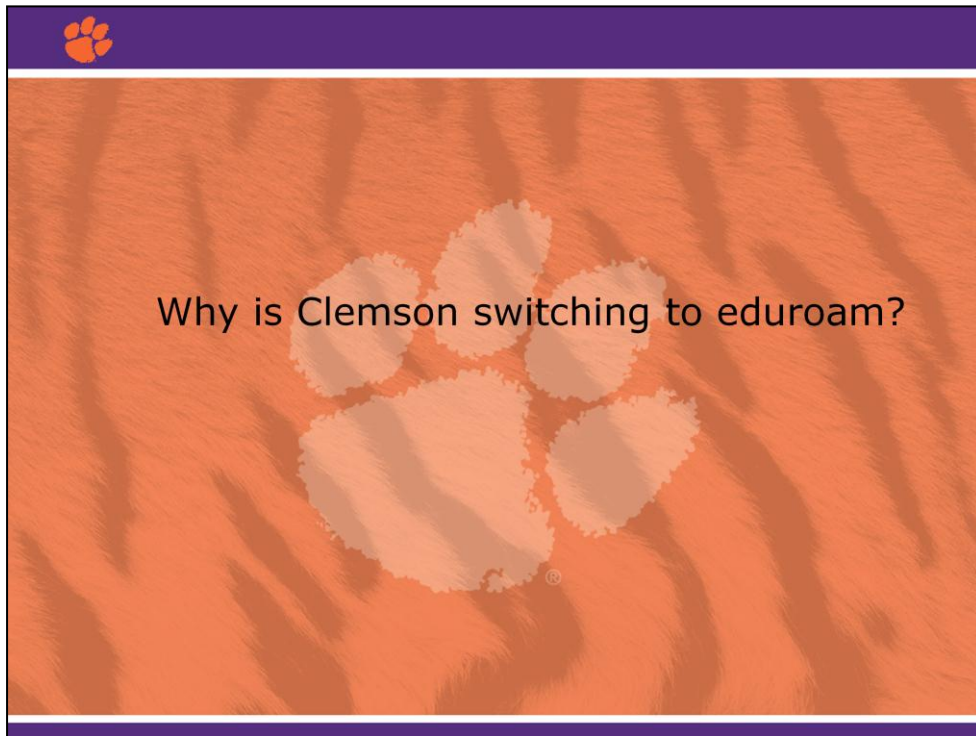
SSID – Service Set Identification or the name of the wireless network. It can be either broadcast or non-broadcast (also know as hidden)



What is eduroam and why is Clemson changing over to it?

eduroam: Short for **education roaming**

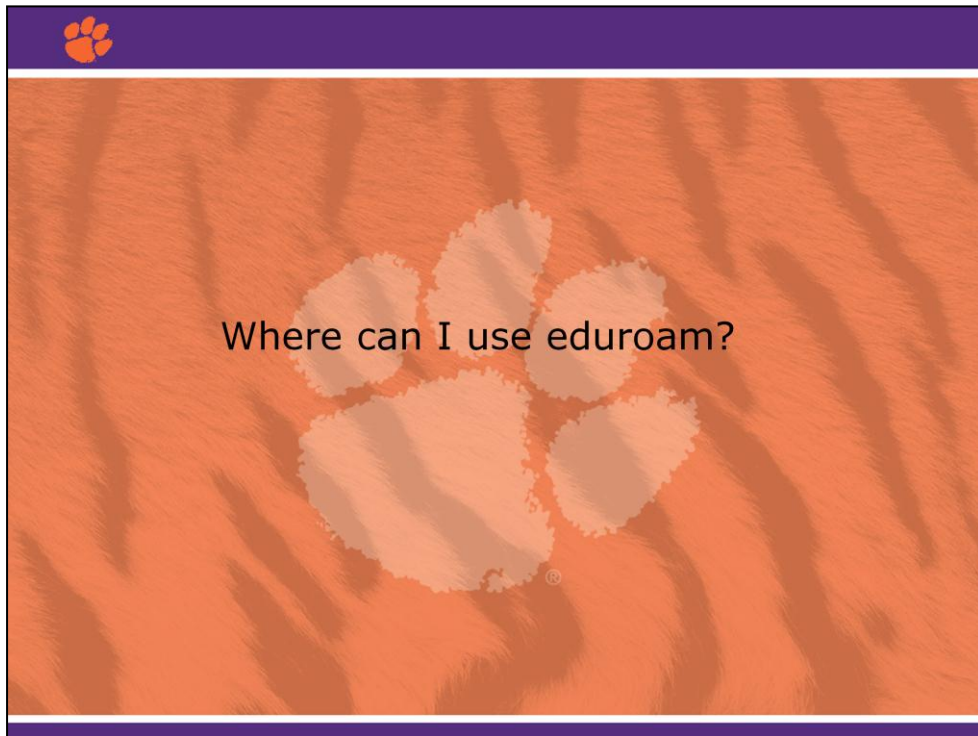
1. eduroam was first deployed in Europe. It came from an initiative to allow educational researchers and supporting research institutions users to gain roaming network access by just connecting their eduroam enabled device.



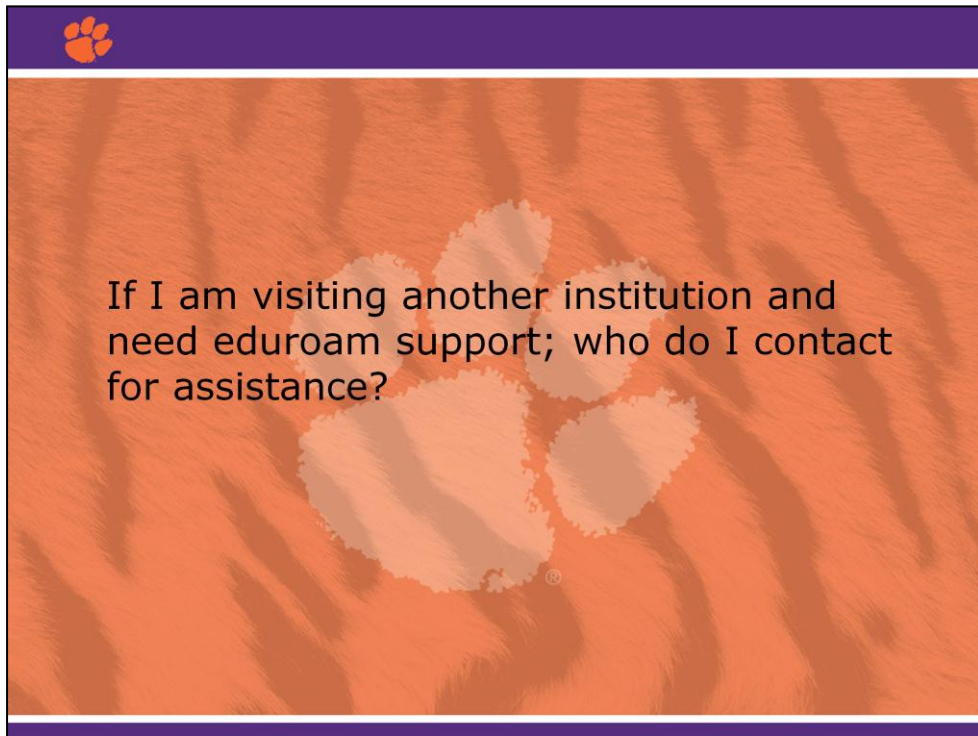
At the end of the last spring semester, networking services realized that the the certificate for the tigernet wireless was going to expire in late December 2013. The certificate allows users to connect safely and securely using your CU credentials. With this knowledge they had choices;

- 1) have everyone delete their current certificate and download another, or
- 2) rollout eduroam as the new standard and one that is in use worldwide by researchers,
- 3) do both and manage 2 wireless networks.

They/we chose to rollout eduroam. BTW – we are the only school to offer only eduroam and have set a new course for other institutions. Currently we are the only place in SC where eduroam is available. GO TIGERS!

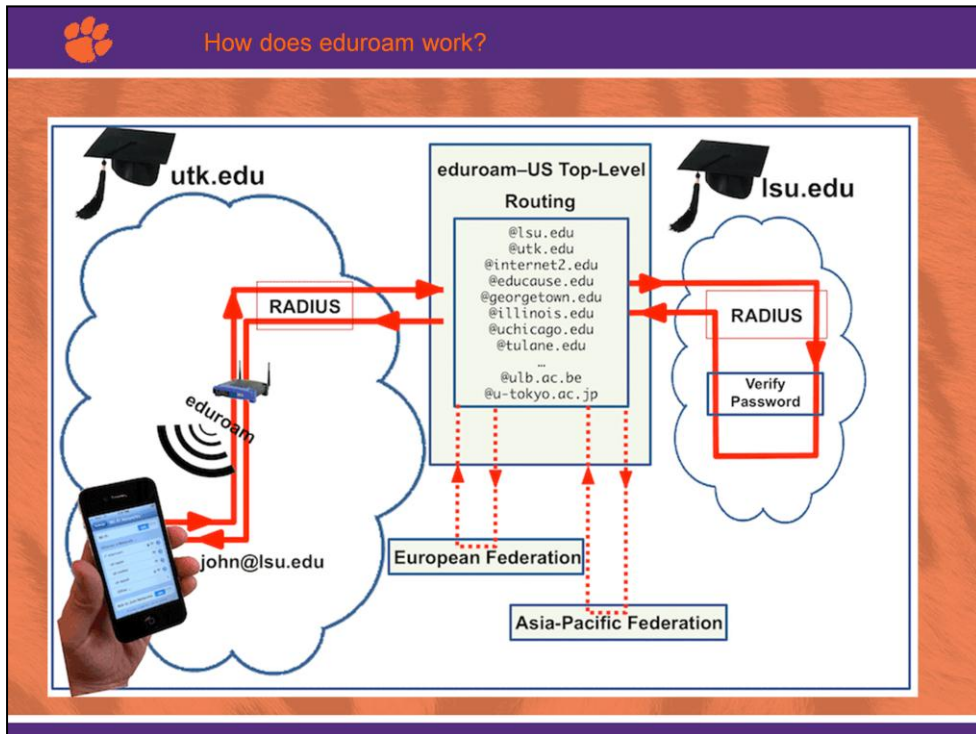


eduroam is currently in live production at 119 colleges and research orgs in the US. A last will be attached to this tech talk. There are about 150 either testing or planning to rollout it out soon. You can go to [www.edroam.us](http://www.edroam.us) to see more locations. There are over 5500 worldwide as well.



If your eduroam visitor needs assistance or you you need assistance, use the support center of your home institution. DO NOT HAVE THEM INSTALL OUR BRANDED EDUROAM!!!





High level overview of the routing. This why we ask you to use the @clemson.edu. It directly relates to your eduperson identity and also falls inline with Clemson's new Identity Management scheme.

I'll explain the diagram. Connecting from LSU to Tennessee Knoxville via eduroam



Questions???