

CLEMSON

Discover your path

FOR TRANSFER STUDENTS

let's begin →

[LEARN MORE](#)

[VIRTUALLY VISIT](#)

[DEGREE PROGRAMS](#)

[NEXT >>](#)



Rise to the challenge

Transferring to one of the nation’s top public universities means direct, hands-on access to cutting-edge research, prestigious academic programs and lifelong connections with people who make a difference.

We know you will make a difference, too.

Clemson offers:

- Online mentoring.
- Connections with partner companies.
- Expansive alumni network in all industries.
- Postgraduate education counseling.

“The main reason I wanted to transfer was the desire for something different. I needed a different perspective on life and to challenge myself in a different environment.”

— Michael Bell, junior architecture and anthropology double major

Clemson’s **80+ majors** are sure to have what you are looking for to grow in your career and in life. Whether you want to dual major, major-minor, find an ideal concentration or need professional certifications, we offer small class sizes within a rigorous curriculum to grow your skills into an ideal career.

And if you’re not sure what you want to study, we can help. Clemson’s Center for Career and Professional Development is built to match your growing skills with internships, real-world experiences and networking opportunities specific to your interests.

College of Agriculture, Forestry and Life Sciences

- Agribusiness
- Agricultural Education
- Agricultural Mechanization and Business
- Animal and Veterinary Sciences
- Environmental and Natural Resources
- Food Science and Human Nutrition
- Forest Resource Management
- Horticulture
- Packaging Science
- Plant and Environmental Sciences
- Preveterinary Medicine*
- Turfgrass
- Wildlife and Fisheries Biology

College of Architecture, Arts and Humanities

- Architecture
- Art
- Construction Science and Management
- English
- History
- Landscape Architecture
- Language and International Business
- Language and International Health
- Modern Languages
 - American Sign Language
 - Chinese
 - French
 - German
 - Italian
 - Japanese
 - Spanish
- Pan African Studies
- Performing Arts
- Philosophy
- Religious Studies
- Women’s Leadership
- World Cinema

College of Behavioral, Social and Health Sciences

- Anthropology
- Communication
- Criminal Justice
- Health Science
- Nursing
- Parks, Recreation and Tourism Management
- Political Science
- Psychology
- Sociology
- Sports Communication

College of Business

- Accounting
- Economics
- Financial Management
- Graphic Communications
- Management
- Marketing

College of Engineering, Computing and Applied Sciences

- Bioengineering
- Biosystems Engineering
- Chemical Engineering
- Civil Engineering
- Computer Engineering
- Computer Information Systems
- Computer Science
- Electrical Engineering
- Environmental Engineering
- Geology
- Industrial Engineering
- Materials Science and Engineering
- Mechanical Engineering

Ten most popular degrees

1. Biological Sciences
2. Psychology
3. Mechanical Engineering
4. Computer Science
5. Nursing
6. Management
7. Financial Management
8. Marketing
9. Industrial Engineering
10. Animal and Veterinary Sciences

College of Education

- Early Childhood Education
- Elementary Education
- Mathematics Teaching
- Middle Level Education
- Science Teaching
- Secondary Education
- Special Education

College of Science

- Biochemistry
- Biological Sciences
- Chemistry
- Genetics
- Mathematical Sciences
- Microbiology
- Physics
- Prepharmacy*
- Pre-professional Health Studies*

*University pre-professional programs

BACHELOR’S TO GRADUATE – A FASTER WAY TO EARN YOUR GRADUATE DEGREE

Enterprising students might want to fast track their master’s degree from the start. Clemson offers a combined bachelor’s and master’s degree plan allowing you to reduce the time typically needed to earn both degrees. There are more than 30 eligible tracks.

Find your niche

Clemson majors offer flexibility no matter your interests. There is no set path you have to take, and our faculty, staff, alumni and student mentor network will work with you and make sense of your academic pursuits. Find your path at clemson.edu/degrees.

Leading the way

Making a difference starts by doing what you love. A great way to figure that out is engaging with professors and professionals. Clemson University partners with businesses around the world for a variety of internships and co-ops including opportunities at General Electric, Bosch, Vanguard, PepsiCo, Michelin, BMW and many, many more.

Our **No. 2-ranked Career Services** and **No. 9 Best Schools for Internships** designations from *The Princeton Review* highlight a commitment to the future and growing a network of Tigers anywhere you might go.



“There are so many different ways you can show your passion at Clemson. The ability to do projects and build machines rather than just doing calculations all day really grows your interests.”

— Juliana-Marie Troyan, senior mechanical engineering major

Juliana-Marie Troyan participated in multiple internships while at Clemson, including a coveted internship with Walt Disney World. She credits Clemson with getting her motivated to seek out those opportunities.



Within an average of six months after graduation, 90 percent of graduates are employed, continuing or planning to continue their education or are not currently seeking employment.

YOU PICK WITH UPIC

Clemson provides real-world experience right on campus with our expansive UPIC program. We offer hundreds of on-campus internships in every field while earning course credit. And, of course, you get paid while doing it.

Work smarter

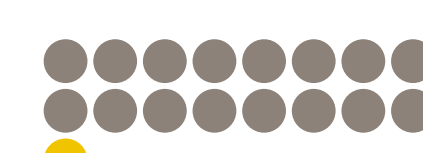


The sheer tenacity of spirit and pride in what we do puts Clemson University in a class of its own. We are designated an **R1 Research Institution**, the highest rank bestowed by Carnegie Classification of Institutions of Higher Learning.

Our **Clemson University Honors College** offers specialized courses in smaller classes taught by top faculty who encourage students to participate in global engagement opportunities and innovative research.

We offer a robust **Creative Inquiry** undergraduate research program featuring more than 500 projects across every field available at Clemson. Since 2005, the program has engaged more than 34,000 students in 1,000+ projects ranging from drought-resistant crops and infrastructure development to rocket propulsion and food waste recovery.

ACADEMICS REPORT

 **16:1**
STUDENT-TO-
FACULTY RATIO

 **19**
MEDIAN
UNDERGRADUATE
CLASS SIZE



86%
INSTRUCTIONAL
FACULTY WITH PH.D.
OR EQUIVALENT



92%
FULL-TIME
INSTRUCTIONAL
FACULTY

GRADUATION RATE

 **84%**
SIX-YEAR GRADUATION RATE FOR
2013 COHORT

 **93%**
RETENTION RATE FOR
FALL 2018 CLASS



BRANCH OUT
Clemson offers more than on-campus opportunities. You can experience what it's like to live, work and study all over the globe through faculty-led, third-party or exchange programs and Clemson's own Study Abroad program.

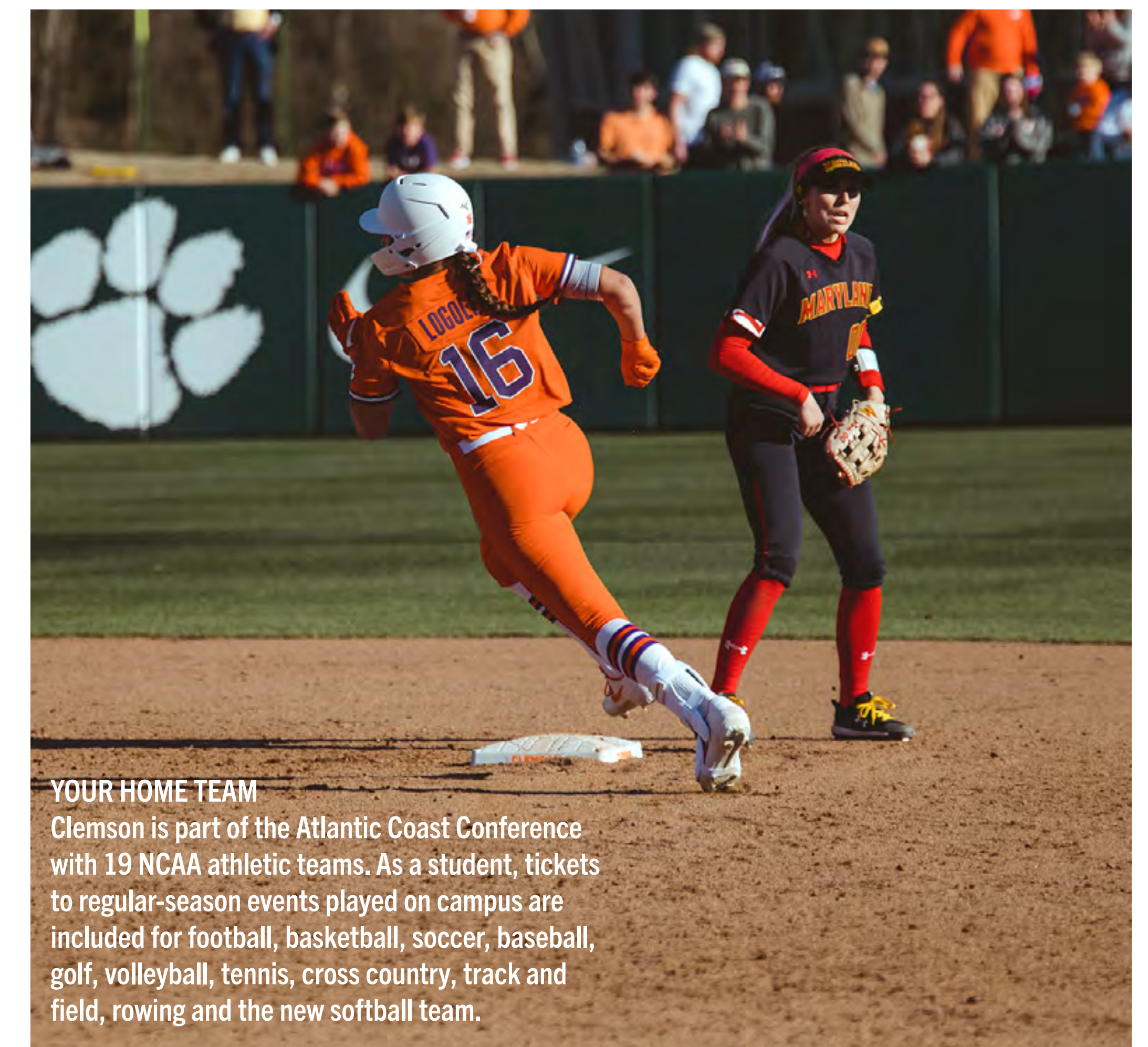
You are here



Clemson's campus is great, but you might not realize that it includes 17,500 acres of Experimental Forest for hiking and biking. It sits along the Lake Hartwell shoreline, making it ideal for kayaking, canoeing or taking a dip at the Snow Outdoor Fitness and Wellness Complex.

College is meant to be a new exploration of life, independence and self-discovery. To do that, you will want to push yourself away from the known and into the unknown. When graduating seniors are asked what they would tell themselves when they first came to Clemson, without hesitation, they say some form of “get outside your comfort zone and get involved.”

Clemson makes that easy with **500+ clubs and organizations** highlighting cultural diversity, sports, sustainability efforts, religion, dance, technology and so much more. And if you don't find the club you want, you can start one.



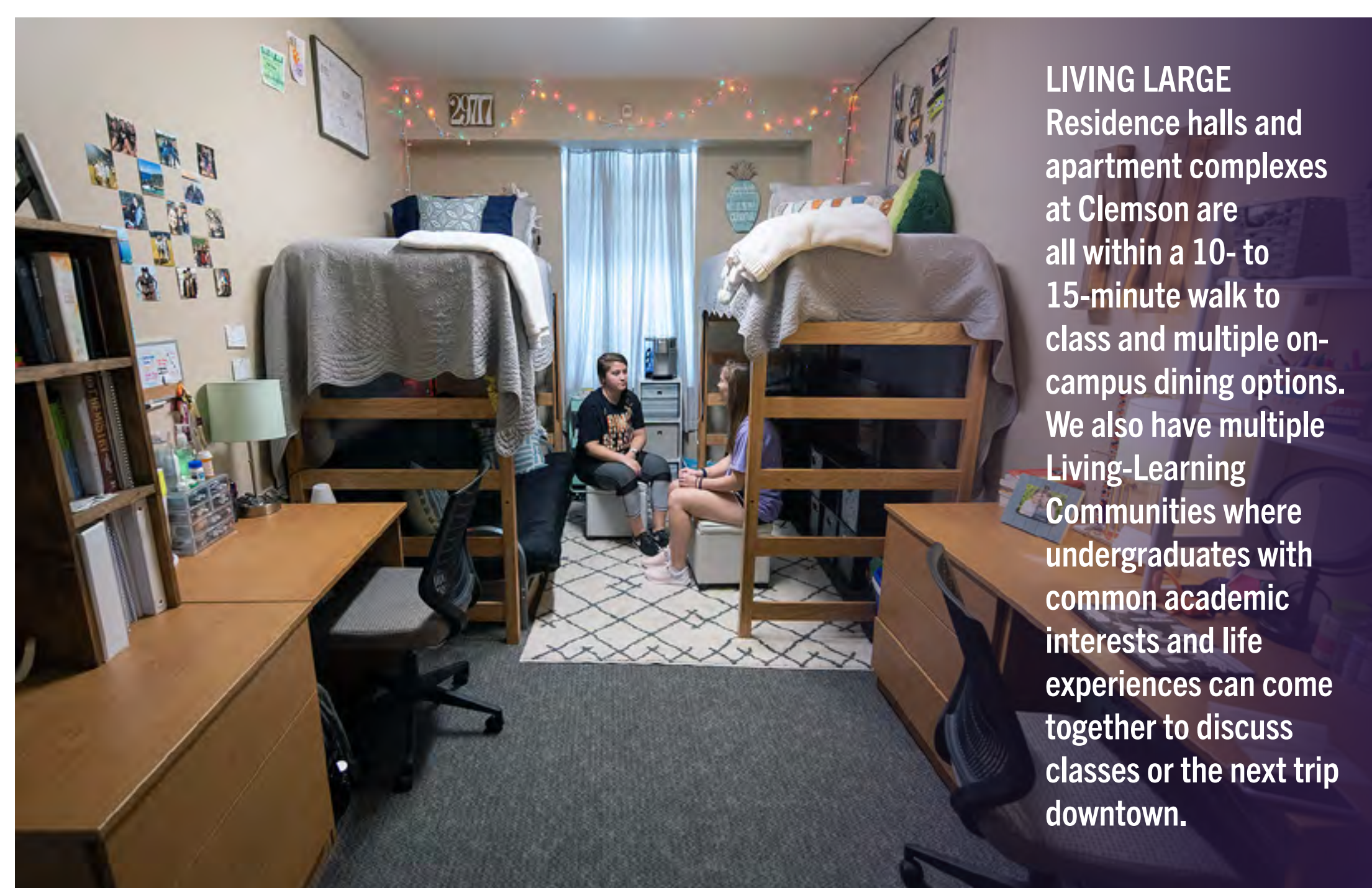
YOUR HOME TEAM

Clemson is part of the Atlantic Coast Conference with 19 NCAA athletic teams. As a student, tickets to regular-season events played on campus are included for football, basketball, soccer, baseball, golf, volleyball, tennis, cross country, track and field, rowing and the new softball team.



89%

STUDENTS WOULD STILL CHOOSE CLEMSON IF THEY COULD DO COLLEGE ALL OVER AGAIN



LIVING LARGE
Residence halls and apartment complexes at Clemson are all within a 10- to 15-minute walk to class and multiple on-campus dining options. We also have multiple Living-Learning Communities where undergraduates with common academic interests and life experiences can come together to discuss classes or the next trip downtown.



Getting off campus is just as important as being involved on campus. Downtown Clemson is filled with dozens of shops to grab all your Clemson gear or restaurants that offer fast casual, fine dining and eclectic dishes from around the world.

We also encourage you to visit Greenville, just 30 minutes away and one of the fastest-growing downtowns in the country. Or take a longer trek to Charlotte, Atlanta or the South Carolina coast, just a few hours away.

Learning. Growing. Succeeding.



Marcus Crawford didn't take the decision to transfer to Clemson lightly, but he knew he could accomplish something special if he stepped outside his comfort zone and accepted new challenges.

"It took me awhile to acclimate to college, and when I got accepted to transfer to Clemson, I was actually enjoying the school I was at. But by the time I got on campus and took the tour, I fell in love with this place. During that tour, I had that moment where I knew I could find my niche and make an impact here."

— Marcus Crawford, junior marketing major

We want to build your transfer to Clemson around communication and continued success in the classroom, on campus and after graduation. Our transfer students have the benefit of our many programs that make the transition simple and seamless.

Transfer Residential Community

The Transfer Residential Community is a Living-Learning Community for new transfer students housed in McCabe Hall on Clemson's campus. Together, students participate in academic support programs and community-service projects each semester.

Transfer Council and Undergraduate Student Government

Transfer Council is part of Clemson's Undergraduate Student Government. All members of Transfer Council transferred into Clemson, and they have a unique perspective on what new transfer students face. Transfer Council works to support programs for transfer students and provides a representative voice for the transfer student population on campus.

CU 1000

CU 1000 is a zero-credit, pass/no pass course that all new Clemson students are required to complete during their first semester of enrollment. The purpose of CU 1000 is to introduce new students to Clemson's student success resources and community standards and values.

CU 1000 is a hybrid course — some modules are completed online, while others require in-person attendance. Course assignments are completed and submitted in Canvas, Clemson's online learning management system.

Class of 1956 Academic Success Center

Located in the heart of Clemson's campus near Cooper Library and the Watt Family Innovation Center, the Academic Success Center (ASC) offers a variety of free services for all undergraduate students. These programs are designed to equip students of all abilities, identities and perspectives with strategies and resources used to:

- Succeed in difficult courses.
- Become a more confident and independent learner.
- Engage in more productive and effective study and learning behaviors.
- Manage time more effectively.
- Reduce test anxiety.
- Explore and determine your major.
- Return to good academic standing.
- Achieve your goal of earning a Clemson University degree.





You'll find tips, requirements and timelines about admission and acceptance at clemson.edu/admissions/undergraduate.

Below are a few guidelines to get you started on your transfer application to Clemson:

- Have your official college transcripts from each previous institution attended sent directly to Clemson University, Office of Undergraduate Admissions, 105 Sikes Hall, Clemson, SC 29634-5124.
- If you took college courses while in high school (dual-enrollment credit), be sure to send your official transcript from the institution(s) where you earned credit.
- Please provide a complete list of your educational history, naming each college or institution you have previously attended in chronological order. This should include each school in which you were previously enrolled, regardless of whether or not you expect to receive credit for the courses or if you withdrew prior to receiving final grades.
- Be prepared to select different first and second choices of majors. Do not list the same major twice.
- Have your credit card or debit card readily available to pay the application fee online when you submit your application. Clemson accepts all major credit cards.
- Be sure to submit the application online only. Do not send in a printed version of the online form.
- If you do not receive an email confirmation within a week of submitting an online application, or if you have trouble completing the online application, please call the Office of Admissions for assistance.

Transferring Credits from Another Institution

Courses that have previously transferred to Clemson University can be viewed on the TCEL (Transfer Course Equivalency List) available on our website. The TCEL contains Clemson University course equivalencies for approximately 1,200 accredited colleges and universities nationwide. Please be advised the TCEL is only a history of how courses have transferred to Clemson and does not represent a comprehensive list of transferable coursework for any school.

If there is a course that is not showing a Clemson equivalency on the TCEL, it will be evaluated by the Office of Admissions upon acceptance. Follow the curriculum outline in Clemson's Undergraduate Catalog for the degree that you plan to pursue, and take the equivalent courses listed on the TCEL. For specific questions regarding your intended major at Clemson University, speak with a faculty adviser by choosing from the Advisers List by subject area located at clemson.edu/admissions/tcel.

Generally, transfer credits are applicable toward degree requirements if the courses taken are:

- Earned at a school accredited by a regional accreditation association, such as the Southern Association of Colleges and Schools.
- Similar in description to the corresponding course at Clemson.
- Required or permitted as an elective in a student's curriculum.
- Graded at least a "C" or better.
- Not a duplication of credits already earned.

Note: No course taken at a non-baccalaureate degree institution may be used as an equivalent or substitute for any 300- or 400-level Clemson course.

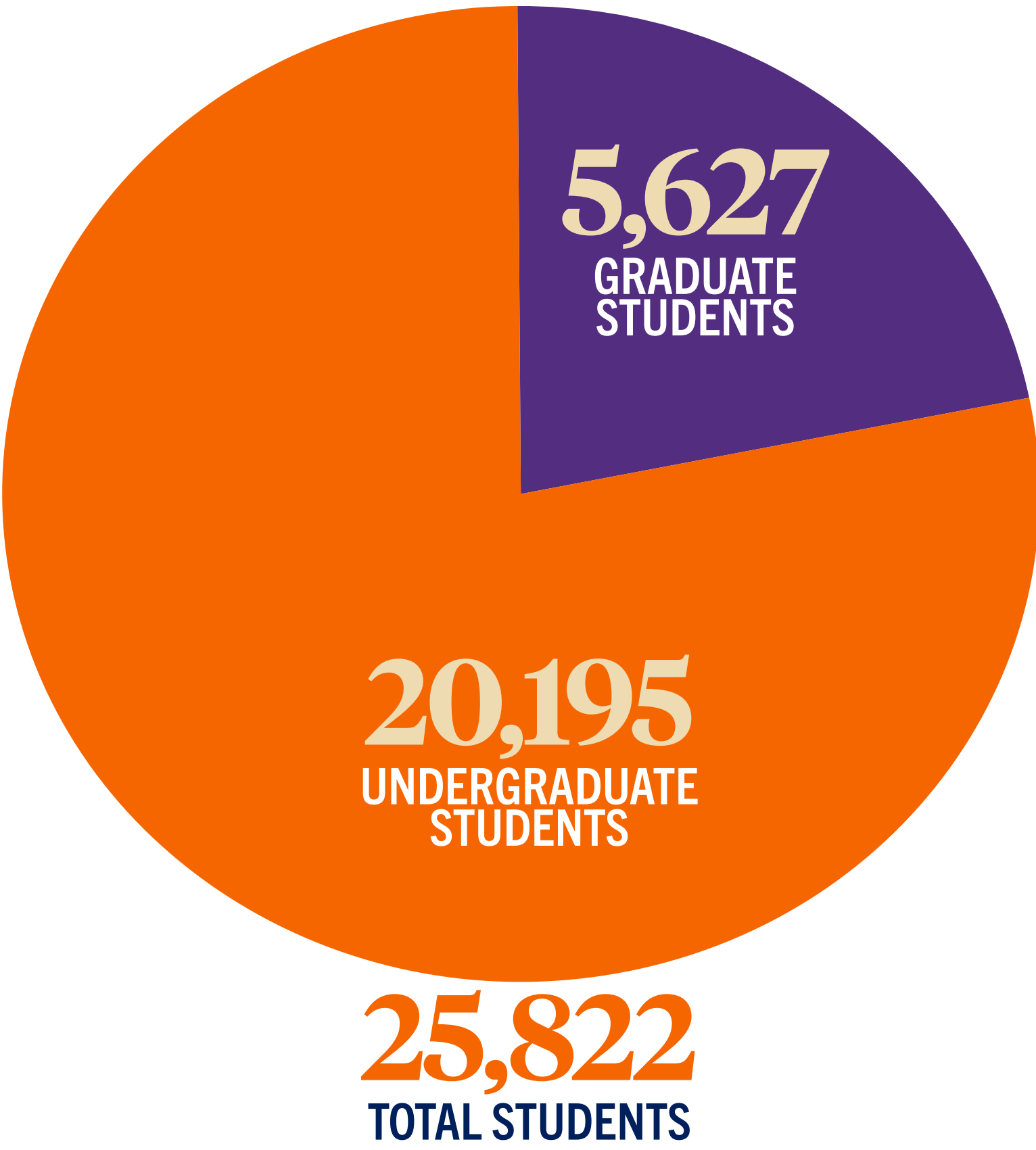
There are specific majors at Clemson that, due to grade point average requirements and/or enrollment limitations, are more competitive. Students interested in one of the majors listed below will need to select a second choice of major when applying to allow more flexibility in the review process.

Apply early and contact the Office of Undergraduate Admissions for current admission requirements. The opportunity to change into one of these majors upon enrollment at Clemson cannot be guaranteed.

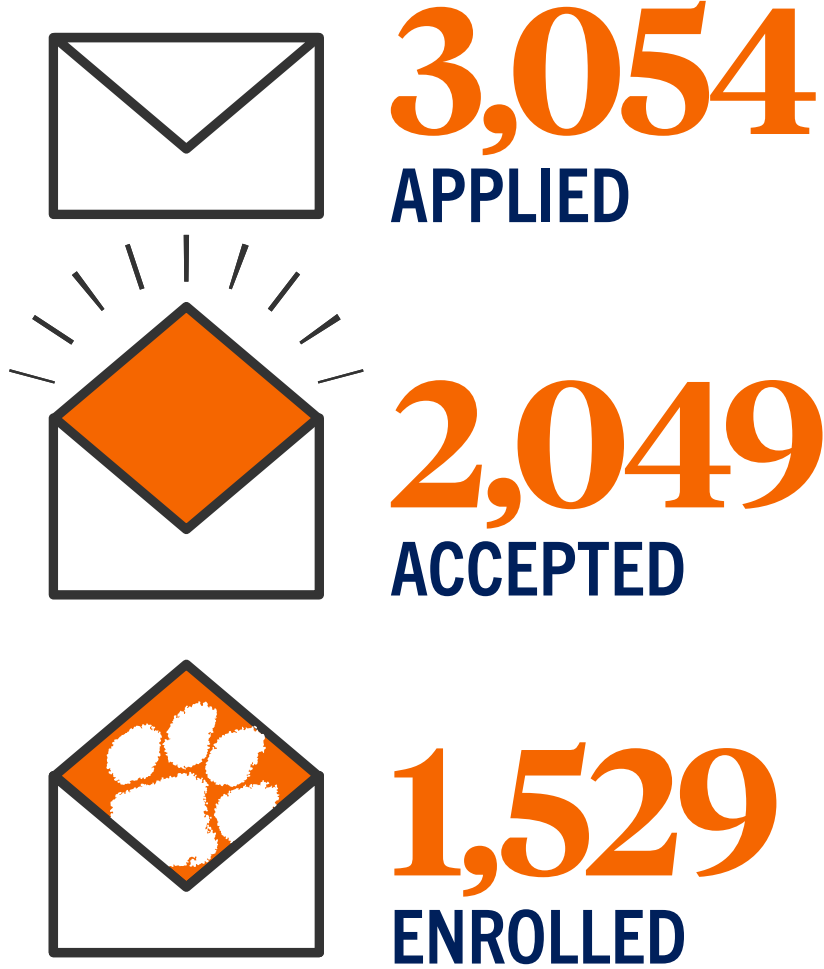
- Architecture
- Communication
- Construction Science and Management
- Criminal Justice
- Early Childhood Education
- Elementary Education
- General Engineering
- Graphic Communications
- Health Science (available for Fall term only)
- Landscape Architecture
- Language and International Health
- Nursing (available for Fall term only)
- Parks, Recreation and Tourism Management
- Performing Arts
- Professional Golf Management
- Secondary Education
- Special Education
- Sports Communication

Clemson By the Numbers

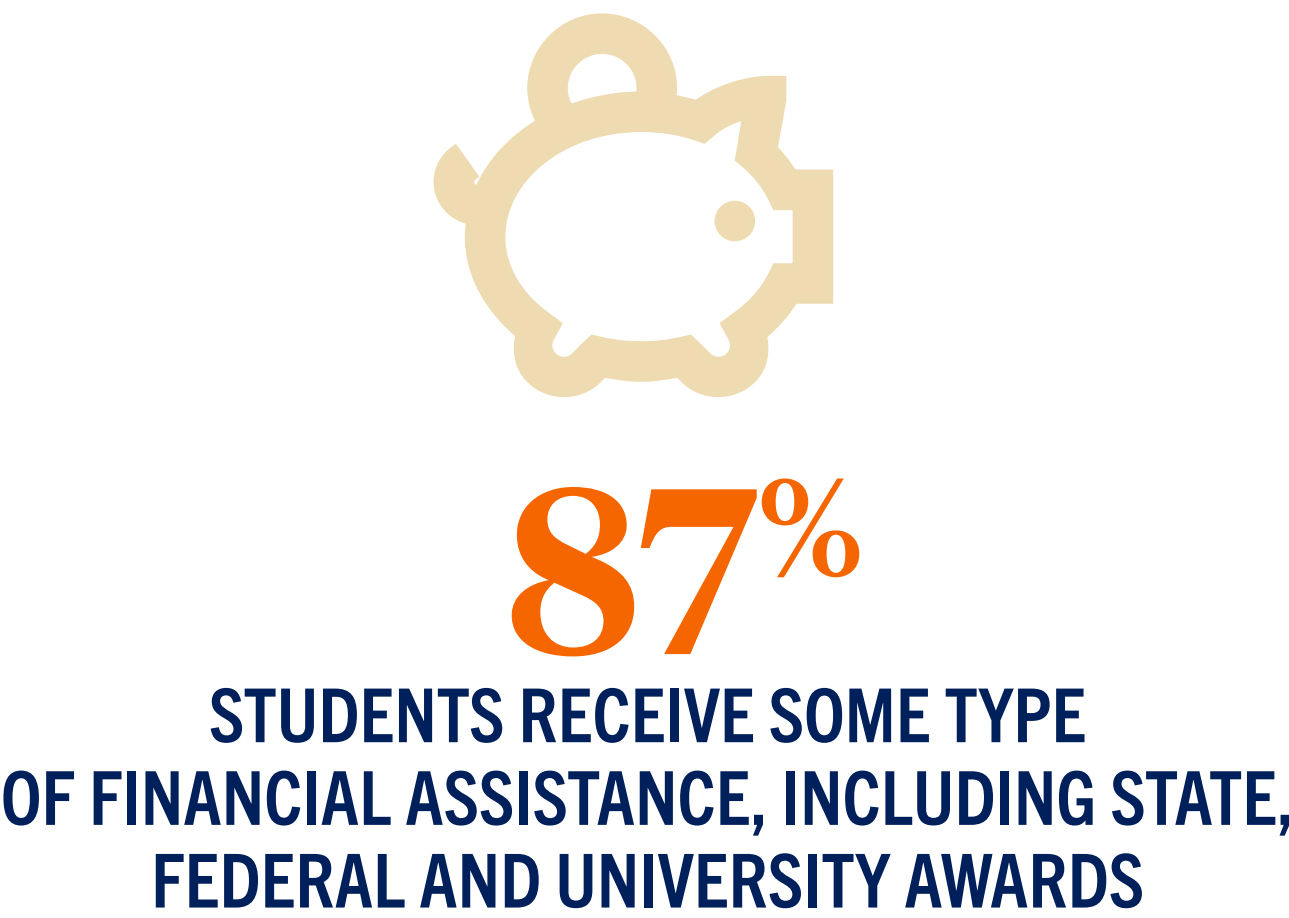
2019 ENROLLMENT



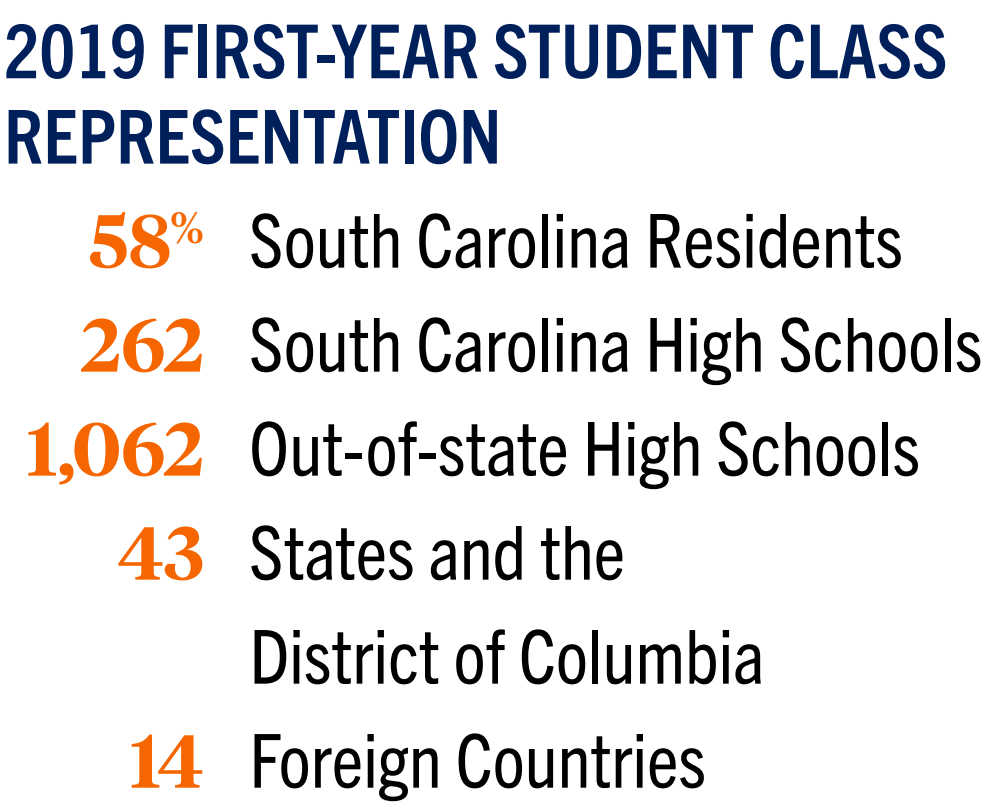
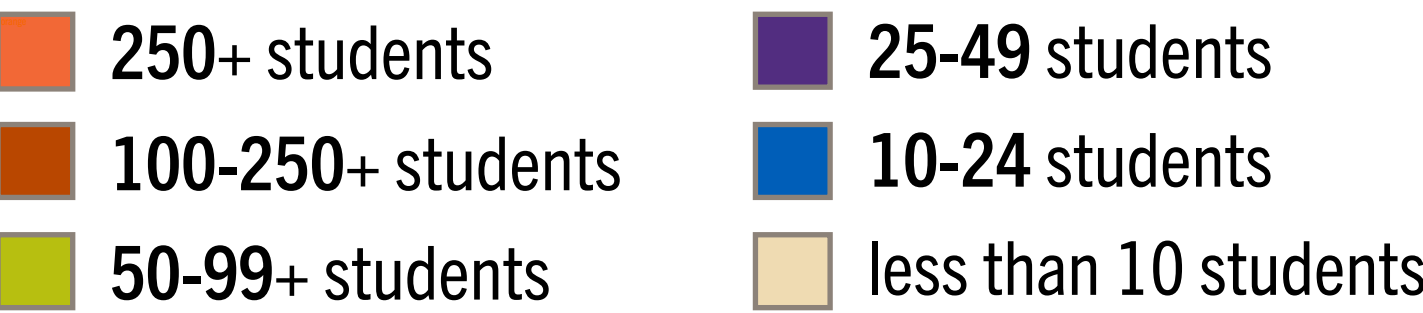
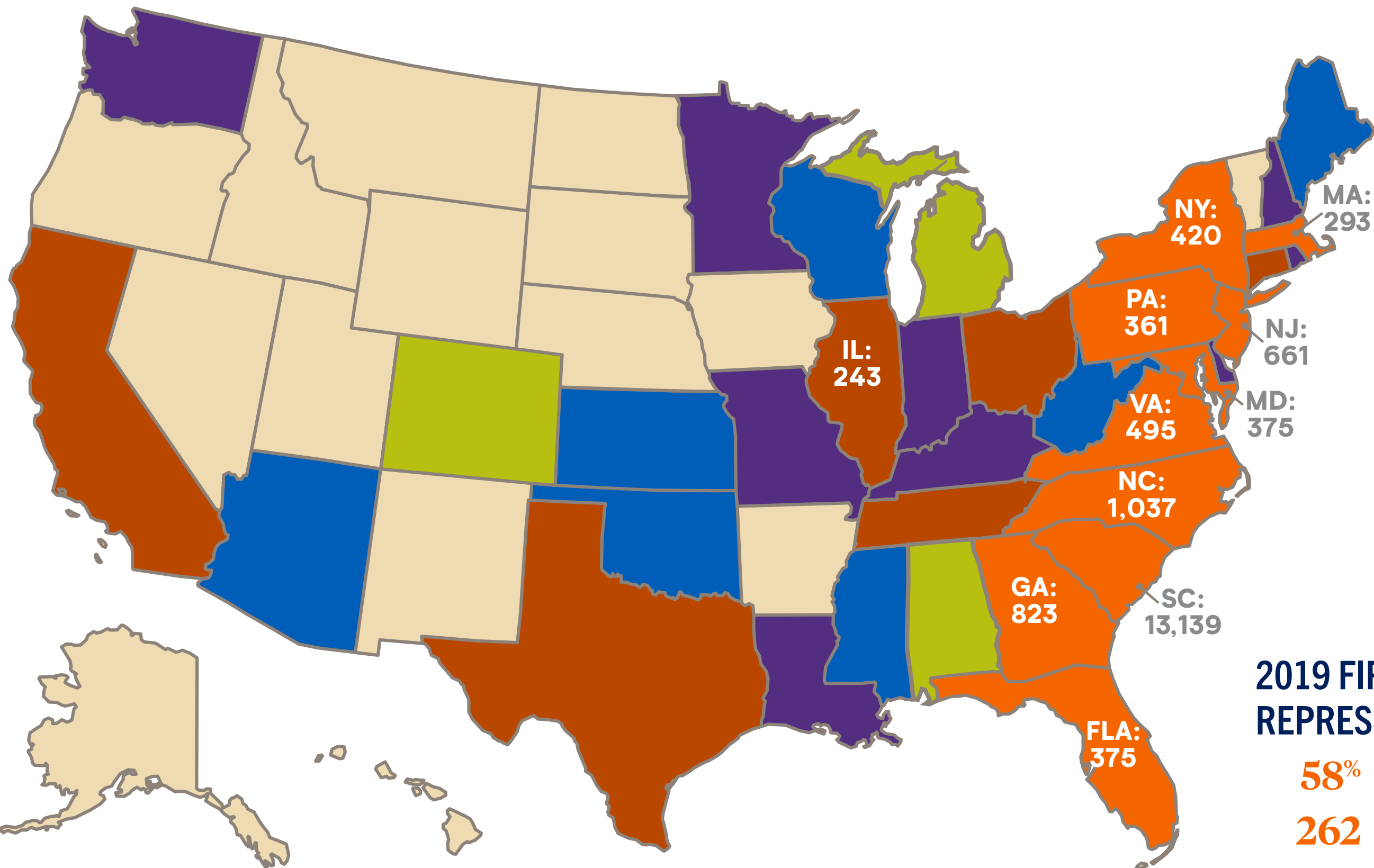
2019 TRANSFER PROFILE



2019 FINANCIAL AID



2019 UNDERGRADUATE GEOGRAPHIC DIVERSITY



To improve your chance for admission, you should:

1. Complete a year of college study — after high school graduation — earning 30 semester hours or 45 quarter hours of transferable credit. Advanced Placement, International Baccalaureate and dual-enrollment credit may not be used to count toward the 30 semester hours (45 quarter hours) requirement.
Note: Consideration for transfer with fewer than 30 semester hours (45 quarter hours) is possible, but the applicant must also submit high school transcript and test scores (SAT or ACT). High school performance will be reviewed first, and a strong high school GPA, class rank and standardized test score are necessary. College academic performance is also required and will be reviewed, in addition to high school information. Students must meet first-year student admission requirements.
2. Earn a cumulative grade point average of 2.5 or higher on a 4.0 scale — 3.0 preferred.
3. Complete first-year student-level courses in English, science and mathematics for your intended major at Clemson University.
4. Be in good standing and eligible to return to the institution last attended.

Additional Requirements for Select Majors

- *Professional Golf Management:* Applicants must demonstrate evidence of a playing proficiency reflected in a handicap of 8 or better. Each student's handicap must be verified by a member of the PGA or by a high school golf coach. For more information, visit clemson.edu/pgm.
- *Performing Arts:* An audition is required for students interested in pursuing music or theater concentrations. For more information, visit clemson.edu/caah/departments/performing-arts.

Financial Aid

Financial aid is usually awarded based on need to supplement the amount you and your parents can contribute to your college expenses. The University also awards some scholarships based entirely on academic merit.

Clemson offers financial aid in the following forms:

- Grants.
- Scholarships.
- Loans.
- Part-time employment.

Legislative Incentives for Future Excellence (LIFE) Scholarships

The LIFE scholarship is valued at \$5,000 per year. This is a renewable scholarship for residents of South Carolina who are enrolled full time. Awards are made automatically; no scholarship application is required.

LIFE Eligibility Requirements for Transfer Students

To receive the LIFE scholarship, you must meet all general eligibility requirements. Eligibility for the first year at Clemson is based on your initial college enrollment and the cumulative GPA and hours earned (nonremedial) at your previous institution(s). This will include both in-state and out-of-state institutions. After your first year at Clemson, all the requirements for continuing students will apply.

Questions about financial aid? Talk with a member of our staff. Office hours are 8 a.m. to 4:30 p.m., Monday through Friday. Email finaid@clemson.edu or call 864-656-2280.

Estimated Costs for 2020-2021

S.C. Resident Full Time (per year)

Tuition and Fees*	\$15,558
Room and Board (approximate)	\$11,850
Books and Supplies (approximate)**	\$1,188
Total	\$28,596

Nonresident Full Time (per year)

Tuition and Fees*	\$38,550
Room and Board (approximate)	\$11,850
Books and Supplies (approximate)**	\$1,188
Total	\$51,588

Other Expenses

Estimated personal/transportation	\$4,214
Estimated computer cost**	\$1,885

*Assumes health and other mandatory fees (required for all full-time students) and average lab fees. Major enrichment fees apply to some majors and can range up to \$2,500.

**All students are required to own a laptop computer. For details, go to clemson.edu/laptop.

All figures are for the 2020-2021 academic year and are subject to change.

Find your place

See for yourself.

Schedule a virtual visit or go online for our newest virtual tour of Clemson's campus.

clemson.edu/visit

Chat with admissions.

Join undergraduate admissions counselors for virtual office hours on Zoom. Counselors will be available on the hour from 10 a.m. to 4 p.m. EST Monday-Friday on the Zoom platform. To participate, you will need a computer or mobile device along with a strong internet connection. We also recommend that you download Zoom before the information session begins.

Start your virtual conversation.

clemson.edu/admissions or call 864-656-2287

Connect with a faculty member.

Contact your department of interest directly at clemson.edu/degrees.

Apply to Clemson.

Find more information at clemson.edu/admissions/undergraduate.


Join the conversation.

 [@clemsonuniv](https://www.facebook.com/clemsonuniv)

 [@clemsonuniversity](https://www.instagram.com/clemsonuniversity)

 [@ClemsonUniv](https://twitter.com/ClemsonUniv)

 [@clemsonuniv](https://www.snapchat.com/add/clemsonuniv)

 [@clemsonuniversity](https://www.youtube.com/clemsonuniversity)

For more information on all things Clemson, visit clemson.edu.

CLEMSON



IMPORTANT DATES AND DEADLINES FOR TRANSFER STUDENTS

Transfer applications are reviewed on a rolling basis as they become complete. Admissions is closed when all classroom space has been committed. We will notify you by email when we receive your application and keep you updated on the status of your application while it's under consideration.

December 1

Deadline to apply for Spring admission (January enrollment)

December 15

Deadline for official transcripts (except those for your current term) must be postmarked by this date.

July 1

Final deadline to apply for Fall admission

Note: Transfer students who wish to apply for Maymester or Summer Sessions should submit their application at least two weeks before classes begin.

**All official documents (except those for your current term) must be postmarked by December 15.*

