



We all live in a watershed...

When rain falls where you live, it flows downhill until it reaches a stream, river or lake. Smaller watersheds flow into larger watersheds until the water reaches the ocean, along with any pollution it carries. Runoff pollution contaminates drinking water and makes streams, rivers and lakes unsafe for recreation.

To report a water quality problem in Richland County:

- Illegal dumping of litter or chemicals
- Sanitary sewer overflow
- Excess dirt washing off a construction site
- Dead fish or discolored water
- Any other stormwater concern



Call the
**Richland County
Stormwater Hotline!**
1-803-576-3599



For more information about

Partners for Healthy Watersheds and other programs,

contact the Richland Countywide
Stormwater Consortium.
Phone: (803) 865-1216 ext. 122
Email: mnevins@clemson.edu

Or visit us on the web at

www.clemson.edu/carolinaclear/rcsc



www.facebook.com/midlandsstormwater



CLEMSON
COOPERATIVE EXTENSION

The Clemson University Cooperative Extension Service offers its programs to people of all ages regardless of race, color, sex, religion, national origin, disability, political beliefs, sexual orientation, marital or family status and is an equal opportunity employer.



Recognition Program for businesses, non-profits, schools, and congregations



*Working together to
protect water quality in
Richland County, SC*





Richland County

PARTNERS FOR HEALTHY WATERSHEDS

Water Matters in Richland County!

Clean water means healthy communities and a healthy economy. Drinking water comes from lakes and rivers, so keeping them clean is essential to healthy employees and families. Lakes and rivers attract people to our area for fishing, boating, swimming and other outdoor recreation. In urban areas, water resources provide a scenic backdrop for shopping and dining.

When rain falls on urban areas, it picks up pollutants, such as

- oil, gasoline and litter, from streets and parking lots,
- fertilizer and pesticides from lawns and landscapes,
- soap, chemicals, cooking grease, and other contaminants poured on the ground or into storm drains.

Rain water runs into storm drains or ditches, which carry the water along with pollutants to nearby streams, rivers, and lakes. By making simple changes and educating employees, businesses can greatly reduce the amount of pollution coming from their properties.

To be a part of the solution, become a **Partner for Healthy Watersheds!**

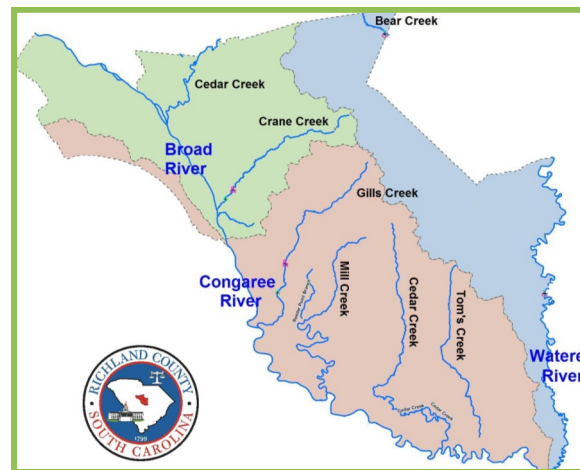
Who is eligible to participate?

This program is open to any business, organization, non-profit, facility, school, or congregation in Richland County that values clean water.

How does my business participate?

1. View the activities list at www.clemson.edu/carolinaclear/rcsc.
2. Complete 10 actions from the list.
3. Complete one bonus action.
4. Hold a training for your staff at least once a year on watershed protection.
5. Complete the online form, and email to mnevins@clemson.edu.

Richland County's Watersheds



What will my business receive for participating?

Being green is great for business! In addition to the knowledge that you have helped make your community a better place to live and do business, your organization will receive:

- Recognition certificate and window decal to display at your business,
- Quarterly press releases naming all Watershed Partner Businesses,
- Recognition on Richland Countywide Stormwater Consortium website,
- Watershed Business seminars,
- RCSC goody bag, including 4 storm drain markers for your property,
- Free pollution prevention training and materials for employees,
- Quarterly newsletter.



Businesses in the Gills Creek Watershed will receive additional recognition by the Gills Creek Watershed Association.

- GCWA window decal,
- Recognition in the GCWA monthly newsletter,
- Recognition on the GCWA website.

Visit www.gillscreekwatershed.org for more information.