

ANDERSON & PICKENS COUNTIES  
**stormwater**  
**PARTNERS**

A CLEMSON EXTENSION SERVICE



# Annual Report of Activities

YEAR 1 / JANUARY 2014 - DECEMBER 2014

MAY 2015



# Executive Summary

Anderson County and the cities of Anderson and Belton joined together with Pickens County and the cities of Easley, Liberty, and Pickens to form the Anderson and Pickens Counties Stormwater Partners (APCSP) (formerly called the Pickens County Stormwater Partners). APCSP continued stormwater education initiatives as part of the National Pollutant Discharge Elimination System (NPDES) General Permit for Stormwater Discharges from regulated Small Municipal Separate Storm Sewer Systems (SMS4s). 2014 was the first year of the APCSP partnership, which is responsible for addressing Minimum Control Measures (MCMs) one and two stated within the permit. These measures direct regulate SMS4 communities to deliver public education and outreach programs with public involvement and participation.

Using the 303(d) List of Impaired Waterbodies, Total Maximum Daily Loads (TMDLs), workshop and event surveys, and feedback from citizens and stormwater professionals in the county, the APCSP identified target pollutants and audiences for the Activity Year 1, January - December 2014. Education was targeted at key interest groups including the general public, professionals involved in land use and development, homeowners, youth, and the commercial community. Stormwater awareness and education about pollutants of concern (POC) included developing programs to address bacteria from animal waste, sediment and erosion, and fats, oils, and grease (FOG).

The APCSP grew with the addition of new education partners and by strengthening partnerships through collaboration on projects and events. The partners remain dedicated to protecting water resources in the Upper Savannah and Upper Saluda River Basins and increasing water stewardship throughout Anderson and Pickens Counties by providing stormwater education and involvement opportunities to all citizens.



**Jon Batson**  
*Stormwater Manager,  
Anderson County*

*“Improving water quality doesn’t happen without a team of dedicated professionals working with conscientious citizens. I’m pleased that we are partnering with Anderson & Pickens Counties Stormwater Partners and Clemson’s Carolina Clear. Together with the cities of Anderson and Belton, we are committed to educating and empowering the public to protect and improve our water resources.”*

# 2014 Highlights

## 2014 Highlights

- Expanded Partnership and New Name
- New Mascot: Windstorm the Carolina Wren
- Publications & Articles
- Displays & Outreach Materials
- Meadow Restoration
- Rain Gardens
- Traveling Trash Bash
- Champions of the Environment Merit Award - Dacusville Middle School
- Programs:
  - Car Wash Kits
  - Carolina Yards & Rain Gardens
  - Composting
  - Fats, Oils & Grease
  - Litter Sweeps
  - Pet Waste Projects
  - Rain Barrels & Watersheds
  - Storm Drain Marking

### TOTAL OUTREACH ACTIVITIES AND TOTAL NUMBER REACHED (*estimated*)

1. Billboards: 393,129
2. Television: 10,917/episode
3. Websites (hits/likes): 77,733
4. Publications: 578,025
5. Outreach Materials: 21,277
6. Exhibits, Fairs, & Festivals: 33,728
7. Presentations and Workshops: 5,638
8. Public Education & Involvement Programs: 21,475
9. Litter Sweeps & Partner Meetings: 1,918



*“Plans to protect air and water, wilderness and wildlife are in fact plans to protect man.”*

*- Stewart Udall*



# Table of Contents

Executive Summary.....	I
2014 Highlights.....	II
Community Partners.....	1
Education Partners.....	2
Mission & Goals.....	3
SMS4s & Water Quality.....	4
Pollutants of Concern.....	5
Watershed Maps.....	6
Report Format.....	8
Overview of 2014.....	9
 <b>Public Education</b>	
Mass Media.....	10
Publications.....	12
Outreach Materials.....	16
Exhibits.....	18
Presentations and Workshops.....	21
 <b>Public Education &amp; Involvement</b>	
Highlight: Composting.....	26
Carolina Yards.....	27
Rain Barrel Painting.....	28
Rain Gardens and Meadow & Buffer Restoration.....	29
Storm Drain Marking and Car Wash Kits.....	30
Green Steps Schools.....	31
Pet Waste Projects and Bin & Barrel Sale.....	33
Native Plants and Soil Samples.....	34
Clemson Extension Programs.....	35
Highlight: Adopt-A-Stream.....	36
 <b>Public Involvement</b>	
Community Litter Sweeps.....	37
Partner Committee Meetings.....	38
Outreach Summary.....	39
Appendix A - Articles.....	40
Appendix B - Fliers and Posters.....	43
Appendix C - Telephone Survey.....	45
Appendix D - Education Plan.....	46
Authors & Acknowledgements.....	47



# Community Partners

The Small Municipal Separate Storm Sewer Systems (SMS4s) community partners in Anderson and Pickens Counties are dedicated to providing stormwater education. The partners work together to better facilitate the development of a unified approach to stormwater education and outreach throughout our region.

## Local SMS4 Partner Representatives

MS4	Partner Representative
Anderson County	Jon Batson
City of Anderson	Adam Cromer
City of Belton	Scott Hanks
Pickens County	Scottie Ferguson
City of Easley	Land Planning Associates, Inc.
City of Liberty	Olen Hamlin
City of Pickens	Cory Cox



# Education Partners

The education partners include agencies, organizations and individuals that share an interest in educating the public about stormwater and water quality. These educational partnerships ensure a uniform and consistent message while leveraging valuable resources, organizational strengths, and collaborations. APCSP is grateful to all of the partners and to the citizens of Anderson and Pickens Counties who are helping to keep our waterways clean and beautiful.



# Mission & Goals

## MISSION STATEMENT

*To develop and implement a broad-based education program that informs citizens about the issues of stormwater management and explains the role they and the business community can play in solving these issues.*

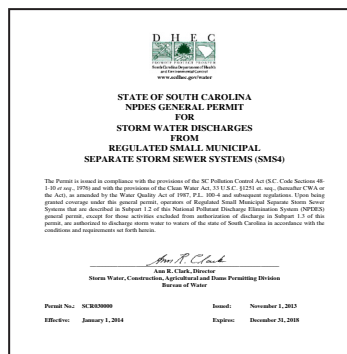
## GOALS

- Maximize efficiency of stormwater education efforts using a county-wide regional approach.
- Help local SMS4s meet NPDES Phase II Stormwater Program permit requirements for stormwater education and involvement by providing educational resources and services such as public education, outreach and community involvement.
- Develop a comprehensive stormwater education plan for the region that capitalizes on local training resources to meet the needs of local SMS4s.
- Serve as a model for collaborative stormwater education.

## SMS4 Permit Requirements:

SMS4s are expected to reduce pollutants to the maximum extent practicable (MEP) through six minimum control measures (MCMs):

1. Public Education and Outreach
2. Public Involvement and Participation
3. Illicit Discharge, Detection and Elimination
4. Construction Site Stormwater Runoff Control
5. Post Construction Stormwater Management
6. Pollution Prevention/Good Housekeeping for Municipal Operations



**Scottie Ferguson**  
 Stormwater Manager,  
 Pickens County

*“We are excited about this collaborative educational opportunity being facilitated by Clemson University and Carolina Clear. We feel strongly that a regional approach, along with the cities of Easley, Pickens, and Liberty will allow us to convey our important water quality messages in a more efficient manner.”*

*We All Live Downstream...*

*Stormwater is the water that runs off the land, generated by precipitation, snow melt, or even irrigation, and all the pollutants that this runoff picks up as it makes its way to lower points in the landscape - typically rivers, streams, and lakes. Some stormwater flows over the land; other times, it's piped out to the stream. Polluted stormwater runoff is not treated by a treatment plant, and therefore, it is considered by the Environmental Protection Agency to be the greatest threat to our nation's water quality.*



# SMS4s & Water Quality

A regulated Small Municipal Separate Storm Sewer System (SMS4) is any small MS4 located in an “urbanized area” (UA), as defined by the Bureau of the Census, or located outside of an UA and brought into the NPDES stormwater program by SC DHEC. Regulated SMS4s are required to have a stormwater permit and a stormwater management program that uses best management practices (BMPs) that effectively reduce or prevent the discharge of pollutants into receiving waters of the state.



## US Census Bureau (2010) - Anderson County Population

- Total - 187,126

## Pickens County Population

- Total - 119,224

## Stormwater Permit (2014) - Unbanized Areas

- Anderson County
- City of Anderson
- City of Belton
- Pickens County
- City of Easley
- City of Liberty
- City of Pickens

## Water Quality

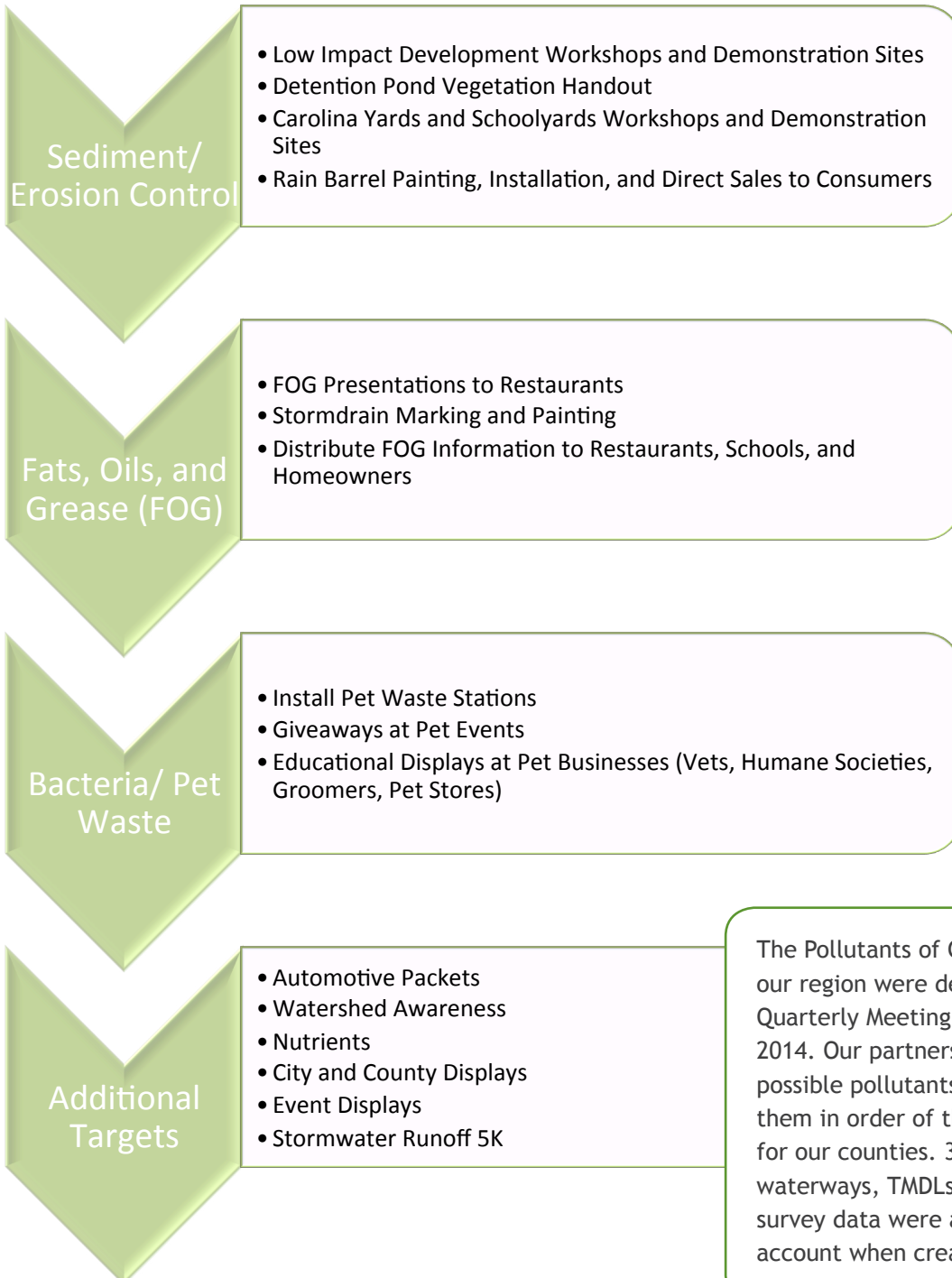
### Anderson & Pickens Counties

- TMDLs Countywide: Bacteria
- 303d List Impairments Countywide : Bacteria, Macroinvertebrates, pH, PCBs, Turbidity, Dissolved Oxygen, Total Nitrogen, Total Phosphorous, Mercury (2012 List)

[www.scdhec.gov/environment/water/tmdl/](http://www.scdhec.gov/environment/water/tmdl/)

In compliance with Section 303(d) of the Clean Water Act, SC DHEC submits a list of monitored waterbodies that do not meet water quality standards to the EPA. The 303(d) list is the list of impaired waterbodies and it is used to determine if the impairment can be addressed through designating a Total Maximum Daily Load (TMDL), which is the amount of a single pollutant (such as bacteria, nutrients, metals) that can enter a waterbody on a daily basis and still meet state water quality standards. “TMDL” refers to both a calculation of a pollutant entering a waterbody as well as a document with source assessments, watershed and land use information, maps, figures, and pictures. Using this information, APCSP can better decide what pollutants or behaviors should be targeted for public education and involvement concerning local stormwater issues.

# Pollutants of Concern

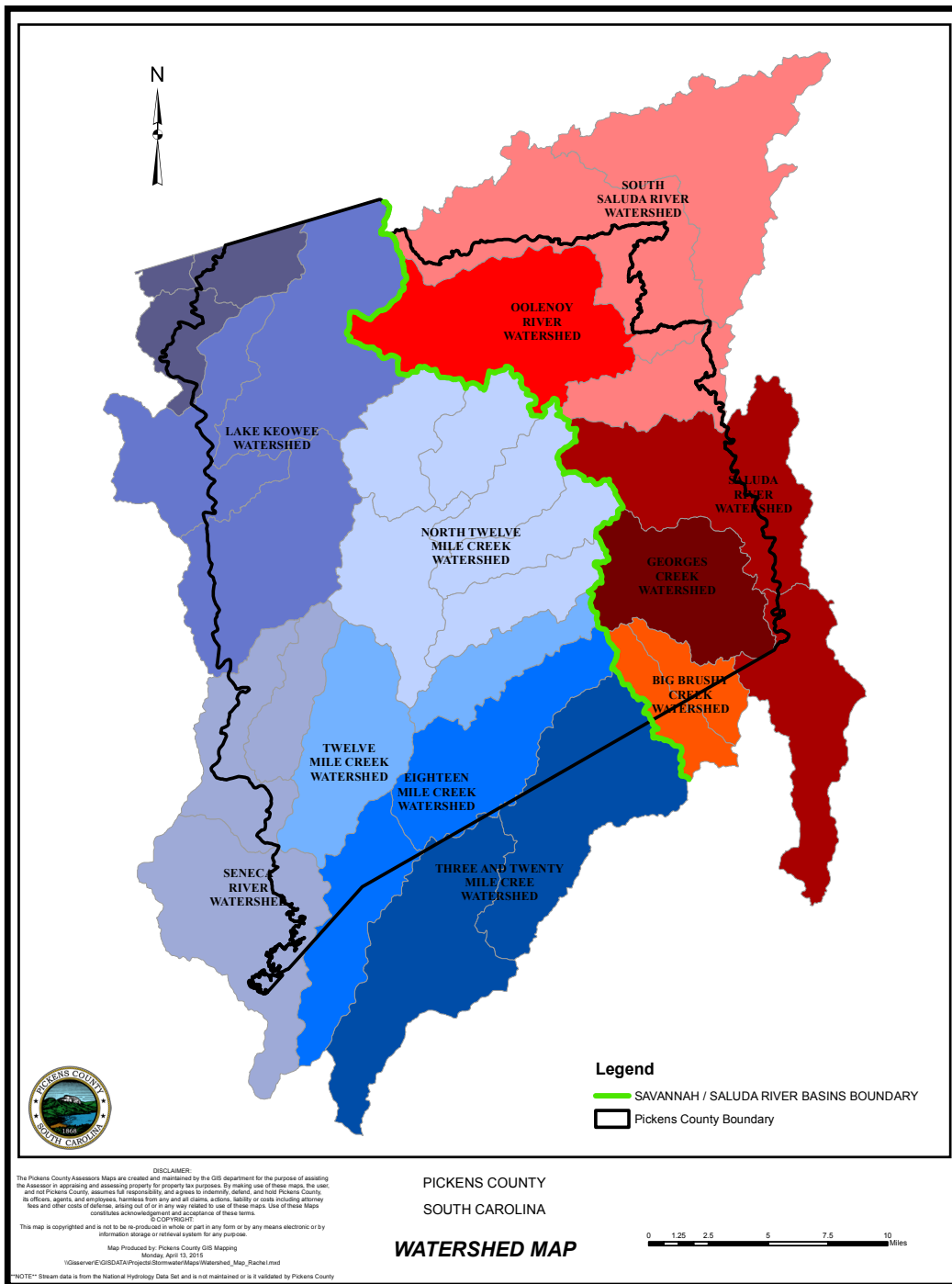


The Pollutants of Concern for our region were decided during a Quarterly Meeting on September 4, 2014. Our partners created a list of possible pollutants and then ranked them in order of their importance for our counties. 303(d) listed waterways, TMDLs, and telephone survey data were also taken into account when creating this list.





# Pickens County Watersheds



*Watershed - an area of land where all of the water, on the surface and underground, drains to a specific waterbody such as a creek, river, lake or the ocean.*

*River Basin - the entire geographical area drained by a river and its tributaries.*

# Report Format

This report provides a detailed outline of the activities that took place in Pickens County over Activity Year 6: January - December 2014. Each activity is briefly described along with the lead provider, supporting partners, date, estimated number of impacts, and target audiences. This report categorizes activities into public education and public involvement sections. All activities are recorded and stored in an online database that is managed by the Clemson University Carolina Clear program.

## Report Categories

The *Public Education* section of this report is organized by outreach methods with these sub-section titles: mass media, publications, outreach materials, exhibits, presentations and workshops, and programs. The *Education through Involvement* and *Public Involvement* sections of this report are organized by program titles.

## Legend

Abbreviation	Report
ACSP	Anderson County Stormwater Partners
APCSP	Anderson & Pickens Counties Stormwater Partners
BMP	Best Management Practice
BSGSA	Biological Sciences Graduate Student Association
CEPSCI	Certified Erosion Prevention & Sediment Control Inspector
CY	Carolina Yards
EPA	Environmental Protection Agency
FASA	Fine Arts Student Association
FOG	Fats, Oils and Grease
FOJ	Friends of Jocassee
FOLKS	Friends of Lake Keowee Society
FTC	Foothills Trail Conference
GA AAS	Georgia Adopt-A-Stream
HGIC	Home and Garden Information Center
IECA	International Erosion Control Association
LEAF	Leading for our Environment and Future
LHA	Lake Hartwell Association, Inc.
LPA	Land Planning Associates, Inc.
MCM	Minimum Control Measure
NPDES	National Pollutant Discharge Elimination System
NRCS	Natural Resources Conservation Service
PCBEAC	Pickens County Beautification and Environmental Advisory Committee
PCSP	Pickens County Stormwater Partners
POC	Pollutant of Concern

Abbreviation	Report
SCBG	South Carolina Botanical Garden
SC ETV	South Carolina Education Television
SC DHEC	South Carolina Department of Health and Environmental Control
SC DNR	South Carolina Department of Natural Resources
SCNPS	South Carolina Native Plant Society
SDPC	School District of Pickens County
SMS4	Small Municipal Separate Storm Sewer System
SOS	Save Our Saluda
STEEP	Secondary Transition Education and Employability Program
TMDL	Total Maximum Daily Load
UA	Urbanized Area

Abbreviation	Target Audience
B	Boat Owners, Operators, and Marinas
C	Commercial
EA	Elected and Appointed Officials
GP	General Public
HE	Higher Education
M	Municipal
NR	Natural Resources Staff
P	Pet Owners
R	Residential - Homeowners and Renters
T	Technical - Engineers, Contractors, Developers, Staff
YT	K-12 Youth and Teachers

# Overview of 2014

Consortium members worked together to develop a five-year adaptive education plan, while continuing to build on existing programs. The APCSP will continue to focus efforts on sediment and erosion control; fats, oils and grease (FOG) disposal best practices; proper pet waste disposal, along with other ongoing programs that include watershed awareness, automotive oils disposal and better management of nutrients to our region's watersheds.

- The 5th annual Elected & Appointed Officials Luncheon was held at the Clemson Outdoor Lab, including the SC DHEC Watershed Managers for the Savannah and Saluda River basins as guest speakers.
- Water and Wildlife Day at Lake Jocassee included the installation of a rain barrel, rain chain, rain garden, erosion control garden and many wildlife habitat boxes at Devils Fork State Park.
- Our fall sale distributed more than 100 rain barrels and 30 compost bins to residents across the region.
- Rain garden workshops were hosted at the SC Botanical Garden and Darwin Wright Park. School groups and Scouts helped with maintenance at other local rain gardens.
- Scouts, 4-H clubs and school groups across our counties have been busy painting rain barrels installed in visible locations to raise awareness about this useful stormwater tool.



Rachel Davis, coordinator of the Anderson County Stormwater Partners, joined the Carolina Clear team in July with a background in formal and informal science education. She is working hard to build stormwater outreach programs in Anderson County.

Cathy Reas Foster, coordinator of the Pickens County Stormwater Partners, was awarded the 2014 Conservation Educator Award from the SC Wildlife Federation and continues to work with many local non-profit organizations and schools on environmental education projects, including a Champions of the Environment award for a composting project.



## Mass Media - Billboards

LEAD PROVIDER	SUPPORTING PARTNER	ACTIVITY	DATE	ESTIMATED # OF IMPACTS	TARGET AUDIENCE
Clemson Carolina Clear	Outdoor Advertising Association of SC	Four billboards located in Anderson and Pickens Counties	Ongoing		B, C, GP, M, R, T

### CAROLINA YARDS

The media campaign for 2013-2014 took a new approach, advertising program resources that support SC-focused, environmentally friendly landscaping practices. Billboards highlight four of the twelve Carolina Yards principles. The (discounted? free?) billboard space is worth \$\$ annually.

**Buffer Zones.**  
 Carolina Yards protect and preserve.  
 Do you have one? [www.clemson.edu/cy](http://www.clemson.edu/cy)

**Healthy Soil.**  
 Carolina Yards enhance and sustain.  
 Do you have one? [www.clemson.edu/cy](http://www.clemson.edu/cy)

**Barrels of Fun.**  
 Carolina Yards are water-wise.  
 Do you have one? [www.clemson.edu/cy](http://www.clemson.edu/cy)

**Give It a Rest.**  
 Carolina Yards are low maintenance.  
 Do you have one? [www.clemson.edu/cy](http://www.clemson.edu/cy)

## Mass Media - Television

LEAD PROVIDER	SUPPORTING PARTNER	ACTIVITY	DATE	ESTIMATED # OF IMPACTS	TARGET AUDIENCE
Clemson Extension	SC ETV	Featured segments on Making it Grow! by Carolina Clear agent, Terasa Lott	2014	10,917 per episode	GP, R

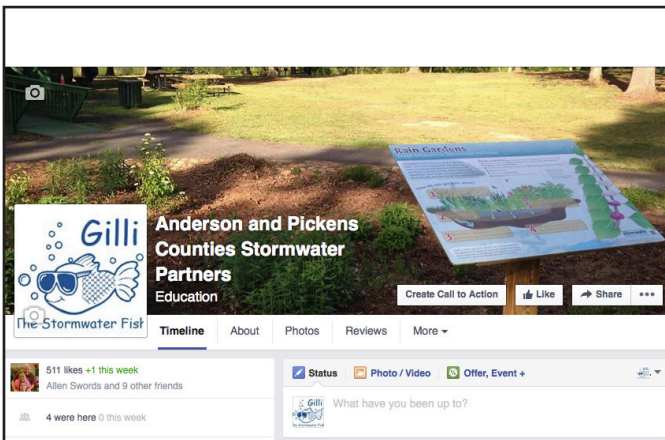
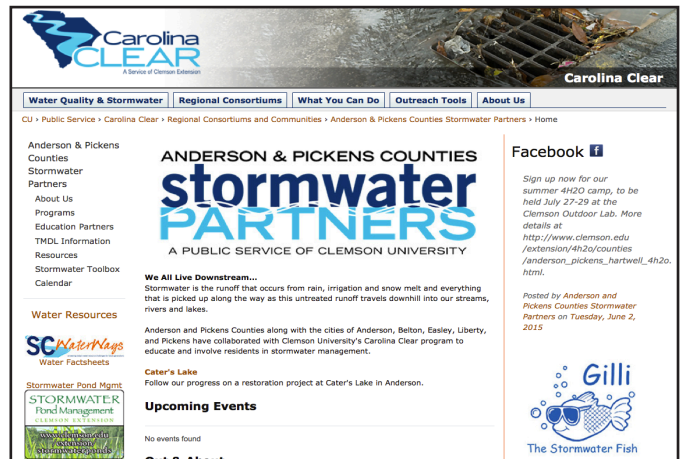
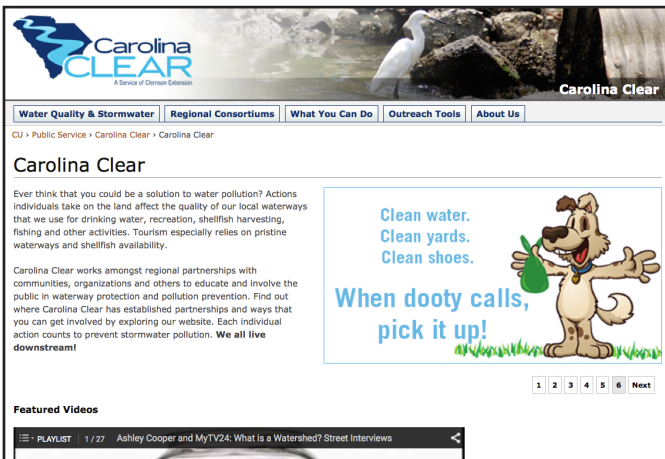
Number reported is the average number of persons per household applied to the number of households that viewed Making It Grow! during the monitored period of November 2013 through July 2014 in the Columbia and Charleston markets only. This number should be considered very conservative and only represents one episode's viewing.

The Emmy Award-winning Making It Grow! is a live, interactive call-in program produced by ETV and Clemson University. Host Amanda McNulty from Clemson Extension along with Clemson Extension Resource Agent Terasa Lott and featured guests including Dr. John Nelson from the USC Herbarium focus on gardening topics, while highlighting interesting places and products from around the state.



## Mass Media - Internet

LEAD PROVIDER	SUPPORTING PARTNER	ACTIVITY	DATE	ESTIMATED # OF IMPACTS	TARGET AUDIENCE
Clemson Carolina Clear	Clemson Extension	Carolina Clear website	Ongoing	24,121	B, C, GP, P, R, T
Clemson Extension	Clemson Carolina Clear	Carolina Yards website	Ongoing	28,718	C, GP, R
Clemson Extension	Clemson Carolina Clear	Stormwater Pond website	Ongoing	16,492	GP, M, R, T
APCSP	Clemson Carolina Clear	APCSP website	Ongoing	1,243	B, C, GP, P, R, T
APCSP		APCSP Facebook page - 713 page visits	Ongoing	506 "likes"	GP, HE, R, YT
Clemson Carolina Clear	HGIC	SC Waterways Stormwater Fact Sheets on HGIC website	Ongoing	6,653	B, C, GP, R



## Publications

### ARTICLES - NEWSPAPERS, MAGAZINES, & E-NEWS

LEAD PROVIDER	SUPPORTING PARTNER	ACTIVITY	DATE	ESTIMATED # OF IMPACTS	TARGET AUDIENCE
Easley Progress	PCBEAC	<i>Pickens Recycling Center gets eye-catching facelift</i>	January 3, 2014	13,300	GP, YT
The Greenville News - Pickens County Edition	PCSP	<i>Pickens students set to begin Prairie Project</i>	January 6, 2014	49,000	GP, YT
Pickens County Courier	PCBEAC, PCSP	<i>Traveling Trash Bash headed to all county elementary schools</i>	February 5, 2014	7,200	GP, YT
Anderson Independent-Mail	PCBEAC, PCSP	<i>Traveling Trash Bash heads to elementary schools in February</i>	February 12, 2014	23,273	GP, YT
Easley Progress	Carolina Clear	<i>Water quality awareness survey being conducted</i>	March 7, 2014	13,300	GP
The Greenville News	Carolina Clear	<i>Clemson survey to gauge water quality attitudes</i>	March 10, 2014	58,210	GP
Anderson Independent-Mail	Clemson Extension	<i>Clemson Extension offers workshops March 18, 19</i>	March 12, 2014	23,273	GP
The Greenville News		<i>Some photos are worth a thousand blooms</i>	March 14, 2014	58,210	GP
Pickens County Courier		<i>Volunteers celebrate Earth Day by teaching 'making choices for a healthier environment'</i>	April 23, 2014	7,200	GP
The Greenville News - Pickens County Edition	PCSP	<i>Environmental Club beautifies school</i>	April 30, 2014	49,000	GP, YT
Easley Progress	Carolina Clear	<i>Clemson's Carolina Clear receives national award</i>	July 25, 2014	13,300	GP
Anderson Independent-Mail	LHA	<i>Hartwell Lake Cleanup to start Friday</i>	July 27, 2014	23,273	B, GP, NR
Easley Progress	Upstate Forever	<i>Upstate Forever celebrates success of tree project</i>	September 3, 2014	13,300	GP
Easley Progress	ACSP	<i>Boy Scouts provide TLC for Cater's Lake rain garden</i>	October 3, 2014	13,300	GP, YT
The Greenville News - Pickens County Edition		<i>Litter-free game</i>	October 8, 2014	49,000	GP



## Publications

### ARTICLES - NEWSPAPERS, MAGAZINES, & E-NEWS

LEAD PROVIDER	SUPPORTING PARTNER	ACTIVITY	DATE	ESTIMATED # OF IMPACTS	TARGET AUDIENCE
Anderson Independent-Mail	APCSP	<i>Deadline to order rain barrels and compost bins is Oct. 23</i>	October 15, 2014	23,273	GP, R
Anderson Independent-Mail	APCSP	<i>Rain barrel, compost bin pick up date Oct 29; deadline to order Oct 23</i>	October 22, 2014	23,273	GP, R
Pickens County Courier	APCSP	<i>Quench your landscape's thirst for natural rainwater</i>	October 22, 2014	7,200	GP, R
Anderson Observer	ACSP	<i>Boy Scouts clean up Cater's Lake rain garden</i>	October 29, 2014	50,000	GP, YT
Upstate Biz SC	ACSP	<i>Boy Scouts provide TLC for Cater's Lake rain garden</i>	October 30, 2014	8,000	GP, YT
Pickens County Courier	PCSP	<i>Dacusville Cub Scouts mark storm drains</i>	November 12, 2014	7,200	GP, YT
Easley Progress	PCSP	<i>Cub Scouts make mark on water</i>	November 19, 2014	13,300	GP, YT

Easley Progress COMMUNITY Friday, October 3, 2014 3

## Boy Scouts provide TLC for Cater's Lake rain garden



ANDERSON — Thanks to Boy Scout Troop 84 out of Central Presbyterian Church, the rain garden at Cater's Lake Park in Anderson is looking great and functioning properly.

Rain gardens are built to collect rainwater, allowing it to slowly permeate into the ground. This prevents the stormwater runoff from flowing on the surface of the ground, picking up pollutants as it travels. By directing the water into the ground, the Cater's Lake rain garden diverts pollutants such as goose waste, lawn clippings, and oil from going into the lake.

Troop 84, led by Senior Patrol Leader Alec Merlo, began their workday on Sept. 26, by raking the area. Too much organic matter in a rain garden will give the soil the ability to hold water longer — and the goal is for water to be able to percolate down.

Once the leaves were out, the boys rearranged river rocks to better direct water from the road to the garden. Several of the older boys worked by the water to dig sediment out of a downhill drain so that water could flow in an underground pipe. They used the sediment they dug out to reinforce an eroding pathway.

Three boys helped plant native asters and pink muhly grass, plants that are well suited for their new home in the rain garden. To finish it off, the boys spread a fresh layer of mulch for moisture control and to protect the soil from erosion.

This project was coordinated by Rachel Herold with Anderson County Stormwater Partners, a regional consortium of Clemson Extension's Carolina Clear program. Mandy Baker, stormwater inspector for the City of Anderson, provided additional support.

Photo contributed by Boy Scout Troop 84 out of Central Presbyterian Church recently worked on the rain garden at Cater's Lake Park in Anderson. The project was coordinated Anderson County Stormwater Partners, a regional consortium of Clemson Extension's Carolina Clear program.

## Publications

### ARTICLES - COMMUNITY & ORGANIZATION NEWSLETTERS

LEAD PROVIDER	SUPPORTING PARTNER	ACTIVITY	DATE	ESTIMATED # OF IMPACTS	TARGET AUDIENCE
SCBG Newsletter, The Garden's Gate	Clemson Carolina Clear	<i>Speed bumps and water control?</i>	January 1, 2014	1,300	GP, R
Anderson County Master Gardener Assoc. newsletter	Clemson Extension	<i>Meadow green &amp; gold work day flyer</i>	February 1, 2014		R
Jocassee Journal	APCSP	<i>Water n Wildlife Day held by Friends of Jocassee</i>	Spring/Summer 2014	3,000	NR, R
Around Town	APCSP	<i>New rain barrel installed</i>	September 2014	480	C, R
SC Nursery & Landscape Association	Clemson Extension	<i>Rain Gardens Plant Selection article in the South Carolina Nurseryman</i>	September-October 2014	535	C, GP, M
The Liberty Buzz	APCSP	<i>Finn's Yard Care Tips</i>	Fall 2014	3,600	C, R
Easley City News	APCSP, Daisy Girl Scouts	<i>Easley community garden: sharing our food with the hungry</i>	Fall/Winter 2014	8,800	C, R

## LOCAL NEWS



### New Rain Barrel Installed

Thanks to the Pickens High School Science Club, Pickens County Stormwater Partners and the City of Pickens, a beautifully painted "turtle" rain barrel has been installed at the PRA/Chamber of Commerce/Extension building in downtown Pickens! Rainwater from the rooftop is collected in the barrel through a diversion in the downspout and is used for watering plants and container gardens. The rain barrel not only reduces the water bill but also reduces stormwater runoff, which is water that flows untreated into the nearest storm drain and into our local creeks, rivers, and lakes. Be on the lookout for more rain barrels in Pickens!

*Photo (L to R): Katie Lowery, Allie Lofink, Glenda Lofink, Mike Parrott and James Blake*

## Publications

### ARTICLES - LAKE ASSOCIATION NEWSLETTERS

LEAD PROVIDER	SUPPORTING PARTNER	ACTIVITY	DATE	ESTIMATED # OF IMPACTS	TARGET AUDIENCE
Lake Hartwell Association newsletter	Clemson Carolina Clear, PCSP	<i>Don't let pollution go down the drain business card ad</i>	Winter 2014	2,150	B, C, GP, R
FOLKS newsletter		<i>EPA and SCDHEC personnel visit Little Eastatoe Creek Watershed &amp; Long Shoals Park</i>	Winter 2014	1,775	B, C, GP, R
Lake Hartwell Association newsletter		<i>LHA Covekeepers program is on a wave</i>	Spring 2014	2,150	B, C, GP, R
Lake Hartwell Association newsletter		<i>Welcome new Covekeepers</i>	Summer 2014	2,150	B, C, GP, R
Lake Hartwell Association newsletter	Clemson Carolina Clear	<i>Create a Carolina Yard</i>	Summer 2014	2,150	B, C, GP, R
FOLKS Newsletter		<i>Gardening, naturally: working with what you have</i>	July 2014	1,775	B, C, GP, R
FOLKS Newsletter	Clemson Carolina Clear, PCSP	<i>Don't let pollution go down the drain business card ad</i>	July 2014	1,775	B, C, GP, R

**The SENTINEL**  
 OFFICIAL NEWSLETTER OF THE U.S. ARMY CORPS OF ENGINEERS  
 U.S. Corps of Engineers and Southeastern Power Administration  
**Sign New Operating Agreement**

One of the agreements to be signed by the U.S. Army Corps of Engineers (USACE) and Southeastern Power Administration (SEPA) is a New Operating Agreement (NOA). The first step in this process was the NOA's approval by the U.S. House of Representatives on August 14, 2014.

The signing of the NOA was celebrated at the Lake Hartwell Association Annual Meeting on October 18, 2014. The accompanying photo shows (L-R) Bill Blandford, executive director, Lake Hartwell Association; Colonel James J. Tichner, commanding general, Fort Belvoir; Major General Robert J. Tichner, commanding general, Fort Belvoir; and Major General Robert J. Tichner, commanding general, Fort Belvoir.

The NOA is approved by USACE and SEPA on October 17, 2014. The first year of the NOA begins on October 17, 2014.

**Contents**

- 1 USACE and SEPA Sign New Operating Agreement
- 2 President's Corner by Jack Lewis
- 3 LHA News/FOJ Update
- 4 FOJ's 2014 Year in Review by Bill Brown, Duke Energy
- 5 Lake Hartwell
- 6 Lake Hartwell and Great Lakes
- 7 Clean Water Act and Lake Hartwell
- 8 Lake Hartwell and the Great Lakes
- 9 Lake Hartwell and the Great Lakes
- 10 Lake Hartwell and the Great Lakes
- 11 Lake Hartwell and the Great Lakes
- 12 Lake Hartwell and the Great Lakes
- 13 Lake Hartwell and the Great Lakes
- 14 Lake Hartwell and the Great Lakes
- 15 Lake Hartwell and the Great Lakes
- 16 Lake Hartwell and the Great Lakes
- 17 Lake Hartwell and the Great Lakes
- 18 Lake Hartwell and the Great Lakes
- 19 Lake Hartwell and the Great Lakes
- 20 Lake Hartwell and the Great Lakes
- 21 Lake Hartwell and the Great Lakes
- 22 Lake Hartwell and the Great Lakes
- 23 Lake Hartwell and the Great Lakes
- 24 Lake Hartwell and the Great Lakes
- 25 Lake Hartwell and the Great Lakes
- 26 Lake Hartwell and the Great Lakes
- 27 Lake Hartwell and the Great Lakes

**MELANIE FINK**  
 TOP PERFORMING REALTOR  
 Miles of shoreline, acres of water... One home that is perfect for you!

lakehousesproperty.com  
 864-940-5766

**Lake Hartwell Association, Inc.**  
 for the sake of the lake  
 Winter 2014 Volume XXVII Number 1

**Letter from the Vice President, Jay Felke**

Happy New Year and get ready for an exciting year for Lake Hartwell, our association and the entire Savannah River Basin. In the past year, we have seen Lake Hartwell and all the other lakes in the system go from drought to flood conditions. 2013 has been ranked the second wettest year on record for both Lake Hartwell and Lake Hartwood with nearly 75 inches of rainfall. This is only a few weeks of an inch off a record rainfall amount in 1949. In the fall the Corps scheduled a four foot draw down of the lake for the winter months and has since changed their plan due to the wet conditions here and downstream. By not adhering to the existing winter grade curves, which dictate a specific draw down, the Corps is managing the basin with an adaptive management approach. It is important to note that LHA's actions and position is to have this process continue after the good fortune of wet weather has passed.

After a successful legislative year, that included the first set of joint state (SC and GA) caucuses in the country, we are ready for another caucus meeting to be held in Augusta, with both state's legislators attending, to further solidify the state's role in managing the water resources in the basin. This is an extremely important event based on the fact that this resource provides clean water for our communities, water for our economic development and water for our recreation.

Another important activity of the association will be the participation in Phase 2 of the Savannah River Basin drought contingency plan and the Nature Conservancy this past year. We will report on the progress of both of these efforts in our upcoming newsletters.

An example of what a clean and full lake can do is the recent announcement of the Bassmaster Classic, the Olympics of fishing, coming back to Lake Hartwell in 2015. It will be held at the newly finished mega fishing ramp and event center at Green Pond in Anderson County.

We are pleased to announce that Ruth Anne Mastig, a long time board member, will be working with Larry Duck as co-chair for the Covekeepers. They will be retooling this important part of our technical agenda. Since Ruth Anne was in charge of programs

**In this issue**

- 1 Vice President's Message
- 2 Bass Master Classic Returns to Lake Hartwell
- 3 What's Happened to Our Top Water?
- 4 Please Help Protect the Clemson Environmental Forest
- 5 The Clemson Pumping Station Anticipates Its Existence
- 6 Twelve Mile River Access
- 7 Stormwater Partners
- 8 Joint State Legislative Caucus Update
- 9 Membership & Volunteers
- 10 Welcome New Members
- 11 LHA Community & Business Partners

**Friends of Jocassee**  
 FOJ  
 A friend of Lake Jocassee, the Jocassee Gorges, the Foothills Trail, Keowee-Toxaway, and Devils Fork State Park.

**First Day 5K Ranger Run & Loon Lunge**

Over 100 people participated in a 5K run and a loon lunge on a day when the temperature didn't top 40 degrees. One for one, because I was in the mood to be outdoors in the water and sun, possibly because I have a friend who is dedicated to supporting whatever crazy thing the state park system comes up with. What I did not expect was to see more than a make-a-don't - the exact count was 100 people. I was so excited to see so many people who were willing to get out there and enjoy the outdoors. I was so excited to see so many people who were willing to get out there and enjoy the outdoors. I was so excited to see so many people who were willing to get out there and enjoy the outdoors.

**FOJ Events**

- March 1 Ready to Paddle Adopt-A-Bay Day
- March 15 2nd Annual Ball Race
- May 3 Water & Wildlife Day - Annual FOJ meeting
- June 7 Ready to Paddle Adopt-A-Bay Day
- Sept 13 YEP Day Volunteer, Inauguration, Picnic

**Goals for 2014 - GIMMICKY GO!**  
 The loon, which overwinters on Jocassee, symbolizes the wilderness of both north and south—wilderness that many of us, trapped in an ever more-urbanized society, long for from the depths of our souls.



## Outreach Materials

### BROCHURES, BOOKLETS, MANUALS

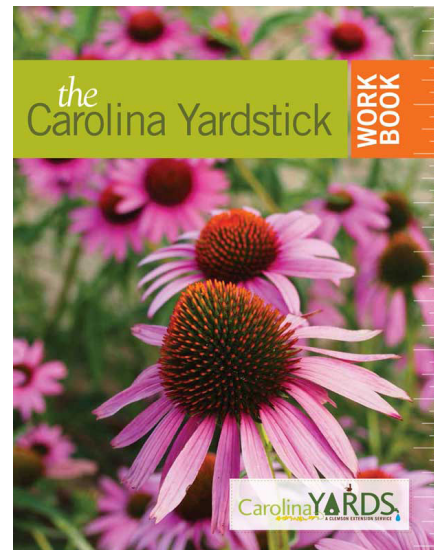
LEAD PROVIDER	SUPPORTING PARTNER	ACTIVITY	DATE	ESTIMATED # OF IMPACTS	TARGET AUDIENCE
Clemson Carolina Clear		Educational Postcard Series - new topics are Composting and Measuring Impact	Ongoing	200	GP
Clemson Carolina Clear	HGIC	SC Waterways Stormwater Fact Sheets on HGIC website	Ongoing	6,653	B, C, GP, R
APCSP		Tip Sheets - new topics are Holiday Tips, Composting, and Pool Care	Ongoing	1,045	B, C, HE, M, P, R, YT
Clemson Carolina Clear	APCSP	Illicit Discharge Business Cards	Ongoing	1,000	C, GP, M, R
Clemson Carolina Clear	CY	New Carolina Yardstick Manual	Ongoing	20	C, R
Clemson Carolina Clear		Rainwater Harvesting for Homeowners	Ongoing	18	C, M, R
Clemson Carolina Clear		Fats, Oils, and Grease (FOG) materials	Ongoing	100	C, R
Clemson Carolina Clear		Auto Repair Shop packets	Ongoing	100	C, R
APCSP		Pet waste fliers and posters	Ongoing	500	P



### A Basic Step Towards Healthier Soil

Composting is the process of allowing for the natural decay of grass clippings, vegetable scraps, leaves and other organic matter with the intention of using them in a garden, plant bed or yard. Bacteria do the work for you, as these small organisms break down garden and landscape trimmings to produce a dark-colored and crumbly form of decomposed organic matter.

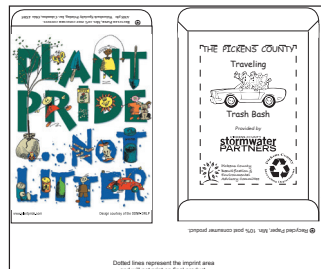
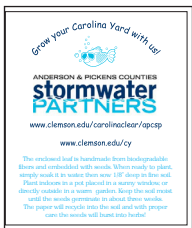
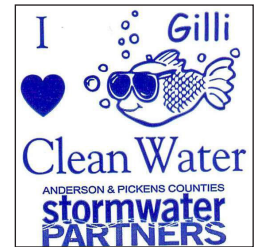
Once added to the soil, compost breaks up heavy clay soils and also reduces the risk of "crusting," which would cause more water to runoff than penetrate to roots. Compost also helps sandy soils retain water and help that water move laterally underground. From a stormwater volume perspective, compost increases storm storage and infiltration. Compost also contains beneficial organisms that build up the soil and make nutrients available to plants. Improving your soil is the first step towards growing healthy plants!



## Outreach Materials

### PROMOTIONAL ITEMS

ACTIVITY	ESTIMATED # OF IMPACTS	TARGET AUDIENCE
APCSP Recycled Newspaper Pencils	1300	YT
APCSP Recycled Plastic Pen	500	YT
APCSP Sticky Notes	500	EA, M, R, T
Recycled Notebook and Pen	200	EA, M, T
APCSP Gilli I Love Clean Water Stickers	1000	YT
APCSP Finn I Love Clean Water Stickers	1000	YT
Gilli & Finn Coloring Book Pages	1000	YT
Rain Gauges with APCSP Stickers	100	GP, R
CY Seed Paper	500	R, YT
Pet Waste Frisbees	100	P
Pet Waste Bandanas	80	P
Pet Waste Bag Dispenser	300	P
Dog Guardian Pledge Cards	200	P
Finn Reusable Tote Bag	175	P, R
PCSP Ice Scrapers	350	M, R
Car Wash Sponges	300	R
Do Not Drink Labels for Rain Barrels	36	C, R
Seed Packets for Traveling Trash Bash	1300	YT
Recycled Newspaper Pencil for Trash Bash	1300	YT
Lanyards	500	HE, M, T, YT
Recycled Sunglasses	150	YT
Recycled Newspaper Pencil for WOW	500	YT
Grocery Tote	250	M, R, T



## Exhibits

### COUNTY AND CITY DISPLAYS

LEAD PROVIDER	SUPPORTING PARTNER	ACTIVITY	DATE	ESTIMATED # OF IMPACTS	TARGET AUDIENCE
ACSP	Anderson County, Cities of Anderson and Belton	Educational displays & posters for county and city administrative offices with materials available to the public	Ongoing	600	GP
PCSP	Pickens County, Cities of Easley, Liberty, and Pickens	Educational displays & posters for county and city administrative offices with materials available to the public	Ongoing	800	GP
APCSP		Rain Barrels in Anderson and Pickens Counties	Ongoing	37 Barrels	GP, R
ACSP		Pet waste stations located in Anderson County	Ongoing	21	GP, P
PCSP	SC State Parks, SC Forestry Commission Humane Society, City & County Parks	Pet waste stations located in Pickens County	Ongoing	22	GP, P
APCSP		Compost Bin Displays in Anderson and Pickens Counties	Ongoing	5	GP, R
Clemson Extension	Clemson Carolina Clear	Stormwater booth at the SC Association of Counties tradeshow	August 1-3, 2014	300	C, EA, T
Anderson County	APCSP	Clean water Christmas tree display at the County stormwater office	December 2014	50	M
Pickens County	PCSP	Clean water Christmas door display at the County Administrative Facility	December 2014	400	M, R, T





## Exhibits

### FAIRS AND FESTIVALS

LEAD PROVIDER	SUPPORTING PARTNER	ACTIVITY	DATE	ESTIMATED # OF IMPACTS	TARGET AUDIENCE
FOJ		Ranger Run and Loon Lunge	January 1, 2014	45	GP
PCSP	Friends of Jocassee	Stormwater education booth at the Bell Fest event on Lake Jocassee	March 15, 2014	300	GP
PCSP	City of Pickens	Stormwater education booth at the Pickens Azalea Festival	April 19, 2014	10,000	GP
APCSP	Clemson Earth Day Committee	Enviroscape and rain barrel at Clemson Earth Day Festival	April 22, 2014	400	HE
PCSP	City of Easley	Stormwater education booth at the Easley Farmers Market Earth Day event	April 26, 2014	250	GP
APCSP	Humane Society	Pet waste education booth at the Anderson Dog Park Fundraiser	April 30, 2014	50	GP, P
PCSP	Friends of Jocassee	Stormwater education booth at Water 'n' Wildlife Day at Devils Fork State Park	May 3, 2014	40	GP
PCSP	Town of Six Mile	Stormwater education booth at Six Mile Farmers Depot	May 15, 2014	300	GP
APCSP	Town of Williamston	Stormwater education booth at the Williamston Springwater Festival	August 23, 2014	30	GP
APCSP	City of Easley	Stormwater education booth at the Easley Farmers Market	August 23, 2014	250	GP
APCSP	Friends of Jocassee	Stormwater education booth at Friends of Jocassee VIP Day	September 13, 2014	125	B, GP, R
APCSP	SCBG	Carolina Yards booth at the SCBG plant sale	September 19, 2014	250	GP, R



## Exhibits

### FAIRS AND FESTIVALS

LEAD PROVIDER	SUPPORTING PARTNER	ACTIVITY	DATE	ESTIMATED # OF IMPACTS	TARGET AUDIENCE
Clemson 4-H		Farm Safety Day included environmental education programs and activities	September 19, 2014	173	YT
APCSP	Duke Energy	Enviroscape at Hunting and Fishing Day	September 20, 2014	1,500	GP, YT
APCSP	FOLKS	Stormwater education booth at FOLKS Lake Sweepers and Island Keepers event	October 2, 2014	75	B, GP, R
APCSP	Easley Fire Department	Stormwater education booth at the Easley Fire Department event	October 9, 2014	1,500	GP
APCSP	Denver Downs	Carolina Yards booth at Denver Downs	October 12, 2014	25	GP, YT
APCSP	Duke Energy	Stormwater education booth at the Fall Homeschool Event at Duke World of Energy	October 25, 2014	80	YT
APCSP	City of Liberty	Stormwater education booth at Fall for Liberty Bluegrass Festival	October 25, 2014	800	GP
APCSP	Friends of Pickens County Guardian Ad Litem	Rain barrel and stormwater cornhole at Clusters for Kids Oyster Roast	November 1, 2014	300	R
City of Anderson Stormwater	APCSP, 4-H	Stormwater education float in Anderson Christmas Parade	December 7, 2014	15,000	GP, R



## Presentations and Workshops

### CERTIFICATIONS

LEAD PROVIDER	SUPPORTING PARTNER	ACTIVITY	DATE	ESTIMATED # OF IMPACTS	TARGET AUDIENCE
Clemson University		Certified Erosion Prevention & Sediment Control Inspector Program Certifications	2014	47	C, M, T
Clemson Extension	Department of Pesticide Regulation	Pesticide Applicator Recertification classes in Anderson and Pickens Counties	2014	99	C, GP, R, T

### PROGRAMS

LEAD PROVIDER	SUPPORTING PARTNER	ACTIVITY	DATE	ESTIMATED # OF IMPACTS	TARGET AUDIENCE
GA AAS	PCSP, Anderson University, SWU	Adopt-A-Stream program training-biological and chemical/bacterial	January 18, February 1, August 23, September 6, 2014	62	GP, HE, YT
PCSP	Clemson Downs	Water and Earth Bingo at Clemson Downs with girl scouts and residents	January 31, 2014	12	R, YT
Clemson University		Sustainability Teach-in at Clemson	February 20, 2014	50	HE
SC DNR	Clemson Extension, PCSP	Wild Hog, Beaver, and Coyote Workshop	March 18, 2014	16	R
SC DNR	Clemson Extension, PCSP	Pond Management 101 Workshop	March 19, 2014	24	R
Georgia Adopt-A-Stream		Georgia Adopt-A-Stream Confluence 2014	March 22, 2014	5	B, C, HE, M, R, YT
North American Lake Management Society	APCSP	Presentation on "A Watershed 'Litter'acy Campaign in the Upper Savannah River Basin" at the Southeastern Lake and Watershed Management Conference	March 26-28, 2014	50	B, HE, M, NR, R, T
Pickens County	APCSP	Stormwater training for roads and bridges	April 15, 2014	33	M
Pickens County	APCSP	Stormwater training for City and County employees	May 13, 2014	24	M



## Presentations and Workshops

### PROGRAMS

LEAD PROVIDER	SUPPORTING PARTNER	ACTIVITY	DATE	ESTIMATED # OF IMPACTS	TARGET AUDIENCE
APCSP	Pickens County	Presentation about stormwater management and Enviroscope at Pickens County Water Authority meeting	May 20, 2014	16	M, T
Pickens County	APCSP	Municipal Stormwater Pollution Prevention & Illicit Discharge Detection Trainings at the Pickens County Recycling Station, Airport, Mile Creek Park, and Wastewater Treatment Plants	May 21, August 1, October 29, 2014	48	M
SC DHEC	Clemson Extension, Pickens County	Take Action Today Workshop and tour of Pickens County Wastewater Treatment Plant and Recycling Center for Pickens County Career and Technology Center	June 24, 2014	50	YT
APCSP	SC DNR, Master Naturalist	Presentation on Geology and Leave No Trace to Master Naturalists	August 14, 2014	20	R
NC State University, NC Extension	Clemson, UT, UGA, AL Extension, UNC	Moderated sessions at Water Education Summit in Asheville, NC	September 8-10, 2014	125	T
APCSP	Women's Club	Emergency management, flooding, and clean water presentation	September 18, 2014	30	R
APCSP	Furman University	To Walk the Land: Leave No Trace and water quality presentation	September 22, 2014	16	HE
IECA Southeast Chapter	Denver Downs	IECA Southeast Chapter South Carolina Erosion and Sediment Control Training and Field Day	September 25, 2014	177	T
Clemson Extension, Pickens County, SC DHEC		Environmental education program workshops for the School District of Pickens County Teacher In-service Day	September 29, 2014	23	YT
Clemson University Institute of Computational Ecology	Clemson Extension, SC DNR	SC Water Resources Conference, Columbia	October 15-16, 2014	340	HE, M, T

## Presentations and Workshops

### PROGRAMS

LEAD PROVIDER	SUPPORTING PARTNER	ACTIVITY	DATE	ESTIMATED # OF IMPACTS	TARGET AUDIENCE
APCSP		Forestry Honors Class Leave No Trace presentation	October 21, 2014	22	YT
APCSP	Southern Wesleyan University	Southern Wesleyan University biology class toured the Pickens County Office of Stormwater Management	November 18, 2014	11	HE
APCSP	Liberty High School	Tree tagging program for Pickens County School District workshop	December 2, 2014	5	YT
City of Easley		Employee Trainings - Fire Dept., Parks & Rec, Public Works	Monthly & Quarterly	82	M

### YOUTH PROGRAMS

LEAD PROVIDER	SUPPORTING PARTNER	ACTIVITY	DATE	ESTIMATED # OF IMPACTS	TARGET AUDIENCE
PCSP	Clemson Elementary School	Flooding presentation for the Robotics Team	January 8, 2014	16	YT
PCSP	Girl scouts	Enviroscape presentation for girl scouts at RC Edwards Middle School	January 14, 2014	5	YT
PCSP	Holly Spring Elementary School	Water quality presentation and activities at Holly Springs Garden Club	January 27, 2014	36	YT
PCBEAC	PCSP	Environmental education presentations at the Traveling Trash Bash for all 3rd graders in Pickens County	February 2014	1,262	YT
PCSP	Pickens Middle School	Enviroscape presentation for Pickens Middle Community Connections class	February 6, 2014	35	YT
PCSP	Pickens County Career Center	Prairie and mulching presentation by Dr. Stringer to students	February 6, 2014	20	YT
PCSP	Pickens Elementary School	Erosion presentation and tree tagging with the Pickens Elementary Hope Garden Club	March 5, 2014	8	YT
APCSP	Grace Church, Anderson	Water quality presentation at Sunday School	March 9, 2014	27	YT

## Presentations and Workshops

### YOUTH PROGRAMS

LEAD PROVIDER	SUPPORTING PARTNER	ACTIVITY	DATE	ESTIMATED # OF IMPACTS	TARGET AUDIENCE
SC DHEC	APCSP	Action in the Classroom presentation to Environmental Sciences students at Daniel HS and Gettys MS	March 26, 2014	80	YT
Clemson BSGSA	APCSP	What's in our Waters presentation with the Pickens Career and Technology Center Environmental Sciences class	May 2, 2014	50	YT
APCSP	Boy Scouts	Boy Scouts environmental merit badge at Water n Wildlife Day	May 3, 2014	8	YT
APCSP	Anderson Montessori	Tree tagging program	May 16 & 18, 2014	62	YT
SC DNR	APCSP	DNR Camp Wildwood - hike and Leave No Trace activities	May 19, 2014	18	YT
Clemson 4-H		Recycling workshop for 4-H	June 2014	6	YT
APCSP	Pickens Elementary School	Stormwater activities with Pickens Elementary garden club	June 2, 2014	28	YT
SCBG	APCSP	Water Education Day at the Botanical Garden	June 9, 2014	10	YT
SC DNR	APCSP	Camp Wildwood, a conservation and natural resources education camp	June 16, 2014	18	YT
APCSP	Gettys Middle School	Enviroscape and water bingo at the Gettys Middle School Summer Camp	July 14, 2014	50	YT
Clemson Extension, 4-H	APCSP	Environmental workshop for 4-H State Congress	July 17, 2014	100	YT
APCSP	Camp Discovery	Various stormwater activities at Camp Discovery	July 18, 2014	70	YT
APCSP, City of Anderson	Anderson YMCA	Stormwater presentations and activities at YMCA summer camp	July 25, 2014	120	YT
APCSP	Anderson Arts Center	Enviroscape and activities at Anderson Arts Center summer camp	August 14, 2014	13	YT
APCSP	Upstate Forever	Enviroscape program at Anderson Montessori Schools for 7th and 8th graders	September 23, 2014	18	YT
PCSP	Pickens Middle School	Enviroscape presentation for Pickens Middle Community Connections class	September 30, 2014	60	YT



## Presentations and Workshops

### YOUTH PROGRAMS

LEAD PROVIDER	SUPPORTING PARTNER	ACTIVITY	DATE	ESTIMATED # OF IMPACTS	TARGET AUDIENCE
Clemson BSGSA	APCSP	What's in our Waters presentation at Daniel High School with families	October 17, 2014	50	YT
Clemson BSGSA	APCSP	What's in our Waters field trip with Daniel High School to Indian Creek	October 22, 2014	50	YT
APCSP	Wren Elementary School	Garden club meeting and stormwater discussion	October 23, 2014	44	YT
Agricultural Museum of SC	APCSP	Environmental education lessons including enviroscape and rain barrel activity for Fair Oak Elementary School at SC Ag Museum	October 28, 2014	110	YT
APCSP	SCBG	Birds and Water program for Jr Naturalist 4H Club	November 11, 2014	12	YT
Girl Scouts	APCSP	Enviroscape presentation at Wonders of Water Journey in a Day for Girl Scouts	November 22, 2014	55	YT
APCSP	Liberty High School	Enviroscape presentation to Liberty High STEEP class	December 4, 2014	10	YT
APCSP	Pickens Elementary School	Hope Garden Club - fish bowl, toad house, and puddle dish painting	December 4, 2014	8	YT
APCSP	Pickens County Career Center	Enviroscape and activities at Pickens County Career Center	December 4, 2014	12	YT
Upstate Forever	APCSP	Tree tagging with Pickens Middle School, Pickens Elementary School, Easley Brownie Troop, Clemson EcoReps, Holly Springs Elementary School, Liberty High School, and Montessori School of Anderson	Ongoing	1,780	YT



# Public Education & Involvement Highlight

## Composting Programs

LEAD PROVIDER	SUPPORTING PARTNER	ACTIVITY	DATE	ESTIMATED # OF IMPACTS	TARGET AUDIENCE
APCSP	Clemson Elementary School	Composting presentation for Clemson Elementary 4th graders	October 27, 2014	40	YT
SC DHEC	APCSP	SC DHEC Composting Pilot Program at Chastain Road Elementary and Liberty Middle Schools	November 6-7, 2014	276	YT
APCSP	SC Agricultural Museum	Compost bin built and installed at SC Agricultural Museum	December 12, 2014	5	GP, YT
Dacusville Middle School	APCSP	Dacusville Middle School Composting Careers program: Composting + Careers = Caring, Connected Communities	Ongoing	172	YT

*Composting is nature's recycling and one of the most efficient ways to protect land and water and conserve our natural resources. Compost is decomposed organic matter that improves soil and water quality by providing soil structure and retaining water, thereby reducing erosion, as well as making nutrients available to plants and decreasing pest problems. Composting reduces the volume of waste as it keeps food scraps and yard waste out of landfills. Five compost bins were made from cedar or reused pallets and are displayed throughout Anderson and Pickens Counties. Presentations were given to schools around Pickens County about the benefits of composting and interactive activities include creating a compost capsule so the students can see and monitor the decomposition process.*



### DEMONSTRATION COMPOST BINS LOCATED AT:

- Agricultural Museum of South Carolina*
- Belton City Hall*
- South Carolina Department of Natural Resources*
- Anderson County Recycling Education Center*
- Pickens County Recycling Education Center*



# Public Education & Involvement

## Programs: CAROLINA YARDS



LEAD PROVIDER	SUPPORTING PARTNER	ACTIVITY	DATE	ESTIMATED # OF IMPACTS	TARGET AUDIENCE
Clemson Extension	Clemson Carolina Clear	Certified Carolina Yards in Anderson, Greenville, Oconee, and Pickens Counties	2014	29	R
PCSP	Clemson Carolina Clear	Carolina Yards presentation to the Anderson Garden Club	February 20, 2014	6	R
PCSP	Clemson Carolina Clear	Carolina Yards presentation to the Lake and Hills Garden Club at Keowee Key	March 14, 2014	26	R
Clemson Extension	Clemson Carolina Clear	Carolina Yards Gardening School	March 22, 2014	99	R
APCSP	SCNPS	Carolina Yards presentation at SC Native Plant Society meeting, Southern Wesleyan University	July 15, 2014	40	R
APCSP	Clemson EcoReps	Carolina Yards presentation and activities	November 10, 2014	22	HE
APCSP		Carolina Yards presentation and activities with Easley High School Environmental Club	December 2014	18	YT
APCSP		Carolina Yards activities with Hope Garden Club	December 2014	8	YT



DEMONSTRATION SITE	ESTIMATED # OF IMPACTS	TARGET AUDIENCE
Certified Carolina Yard at Holly Springs Elementary School	210	YT
Certified Carolina Yard at Pickens Elementary School	530	YT
Certified Carolina Yard at SC Botanical Garden	5,000	GP
Certified Carolina Yard at Clemson SC DNR	150	GP
Certified Carolina Yard at Pickens Extension/Chamber of Commerce	150	GP
Certified Carolina Yard at Unitarian Universalist Fellowship, Pendleton	175	GP
Certified Carolina Yard at Devils Fork State Park	50	GP



# Public Education & Involvement

## Programs:

### RAIN BARREL PAINTING - "BARRELS & SHEDS"

LEAD PROVIDER	SUPPORTING PARTNER	ACTIVITY	DATE	ESTIMATED # OF IMPACTS	TARGET AUDIENCE
APCSP	Crosswell Elementary School	Watershed presentation and rain barrel painting at Crosswell Elementary	April 1, 2014	12	YT
APCSP	Clemson EcoReps	Rain barrel painting and installation at the Ecoplex	April 3, 2014	15	HE
APCSP	FASA	Rain barrel painting with FASA students at the Sustainable Garden	April 16, 2014	9	HE
APCSP	Daniel High School	Installed rain barrel and Carolina Fence garden	May 6, 2014	9	YT
APCSP	SC Agricultural Museum	Enviroscape presentation and rain barrel painting at Kids Day at the SC Agricultural Museum	June 28, 2014	20	YT
APCSP	Grace Episcopal Church, Anderson	"The Gift of Water" rain barrel painting and installation	August 24, 2014	30	GP, R, YT
APCSP	Clemson University	Enviroscape presentation and rain barrel painting at Clemson Earth Fest	September 25, 2014	200	HE
APCSP	Girl Scouts	Enviroscape presentation and rain barrel painting for Girl Scout Troop 1191	November 17, 2014	9	YT

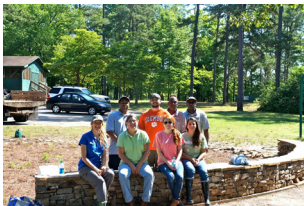


# Public Education & Involvement

## Programs:

### RAIN GARDENS

LEAD PROVIDER	SUPPORTING PARTNER	ACTIVITY	DATE	ESTIMATED # OF IMPACTS	TARGET AUDIENCE
APCSP	Liberty High School	Rain garden work day and tree tagging	April 22, 2014	12	YT
APCSP	Holly Springs Elementary School	Rain garden planting day	April 28, 2014	40	YT
APCSP	City of Anderson	Rain garden planting day at Darwin Wright Park, Anderson	May 16, 2014	8	GP
APCSP	Holly Springs Elementary School	Rain garden maintenance and planting day	September 15, 2014	65	YT
APCSP	City of Anderson	Rain garden workday at Cater's Lake in Anderson with a boy scout troop	September 27, 2014	21	YT
Clemson Carolina Clear	APCSP, SCBG	Rain Garden workshop and installation at the SC Botanical Garden	October 22, 2014	18	GP, M, R
APCSP	Easley High School	Environmental club rain garden workday	December 3, 2014	15	YT



### MEADOW AND BUFFER RESTORATION

LEAD PROVIDER	SUPPORTING PARTNER	ACTIVITY	DATE	ESTIMATED # OF IMPACTS	TARGET AUDIENCE
APCSP	SC DNR	Green n Gold meadow workday at Clemson SC DNR	March 13, 2014	7	GP
APCSP	SC DNR	Meadow workday at Clemson SC DNR	July 10, 2014	6	GP
APCSP	SC DNR	Hallow Greening meadow workday at Clemson SC DNR	October 28, 2014	7	GP
APCSP	SC DNR	Meadow planting day at Clemson SC DNR	November 20, 2014	7	GP
Pickens County	APCSP, SCNPS	Buffer restoration and erosion control at Mile Creek Park on Lake Keowee	Ongoing	16	GP, R



# Public Education & Involvement

## Programs:

### STORM DRAIN MARKING - "RAIN & DRAINS"

LEAD PROVIDER	SUPPORTING PARTNER	ACTIVITY	DATE	ESTIMATED # OF IMPACTS	TARGET AUDIENCE
APCSP		Storm drain marking with Girl Scout troop 1010	March 1, 2014	7	YT
APCSP	Pickens Middle School	Storm drain marking with Pickens Middle Community Connections Club	April 10, 2014	20	YT
Pickens County 4-H		Teen council marked storm drains	June 2014	4	YT
APCSP		Number of storm drains marked by community or school groups	Ongoing	400	GP



### CAR WASH KITS

LEAD PROVIDER	SUPPORTING PARTNER	ACTIVITY	DATE	ESTIMATED # OF IMPACTS	TARGET AUDIENCE
Pickens High School	APCSP	Car wash kits to Pickens High school for Eco-friendly car wash	May 9, 2014	25	YT
Porters Chapel Methodist	APCSP	Car wash kits to Porters Chapel Methodist for a car wash fundraiser	October 2014	32	GP





# Public Education & Involvement



## Programs:

### GREEN STEPS SCHOOLS

LEAD PROVIDER	SUPPORTING PARTNER	ACTIVITY	DATE	ESTIMATED # OF IMPACTS	TARGET AUDIENCE
APCSP	SC DHEC	Teacher in-service workshop about Green Steps in Pickens County	February 2, 2014	14	YT
SC DHEC, Sonoco Recycling	Daniel High School, PCBEAC, PCSP	Conserve - Recycle; Protect Air; and Restore Habitat Projects	Ongoing	1100	YT
SC DHEC, Sonoco Recycling	Pickens Elementary School, PCSP, PCBEAC	Protect Water and Restore Habitat Projects	Ongoing	491	YT
SC DHEC, Sonoco Recycling	Dacusville Middle School, PCSP	Conserve - Recycle; Conserve - Reuse; Protect Air and Water; Restore Compost and Habitat Projects	Ongoing	350	YT
SC DHEC, Sonoco Recycling	Liberty Middle School, PCSP	Conserve - Recycle; Protect Air and Water; Restore Compost Projects	Ongoing	210	YT
SC DHEC, Sonoco Recycling	Pickens County Career Center, PCSP, PCBEAC	Protect Water and Restore Habitat Projects	Ongoing	1197	YT



# Public Education & Involvement



## Programs:

### GREEN STEPS SCHOOLS

LEAD PROVIDER	SUPPORTING PARTNER	ACTIVITY	DATE	ESTIMATED # OF IMPACTS	TARGET AUDIENCE
SC DHEC, Sonoco Recycling	Pickens High School, PCSP, PCBEAC	Conserve Recycle Projects	Ongoing	1412	YT
SC DHEC, Sonoco Recycling	Easley High School, PCSP, PCBEAC	Conserve Recycle Projects	Ongoing	1850	YT
SC DHEC, Sonoco Recycling	Central Elementary School, PCSP	Protect Air and Water; Restore Habitat Projects	Ongoing	374	YT
SC DHEC, Sonoco Recycling	Pickens Middle School, PCSP	Conserve Recycle and Reuse; Protect Air and Water Projects	Ongoing	750	YT
SC DHEC, Sonoco Recycling	Wren Elementary School, APCSP	Conserve - Recycling; Conserve - Green Purchasing; Protect Air; Protect Water - Rain barrel; Restore Habitat Projects	Ongoing	560	YT
SC DHEC, Sonoco Recycling	Holly Springs Elementary School, PCSP	Protect Air and Water; Restore Habitat Projects	Ongoing	218	YT





# Public Education & Involvement

## Programs: PET WASTE PROJECTS

LEAD PROVIDER	SUPPORTING PARTNER	ACTIVITY	DATE	ESTIMATED # OF IMPACTS	TARGET AUDIENCE
APCSP		Puppy love kits given to veterinarians around Pickens County	February 2014	5 vet clinics	P
APCSP	Easley Farmers Market	Pet waste pledge cards at the Easley Farmers Market	September 27, 2014	4	P
APCSP	Rocky River Conservancy	Installed pet waste station at the Rocky River Nature Park in Anderson	November 7, 2014	5	GP, P
APCSP	Pickens County Humane Society	Pet waste pledge cards	Ongoing	110	P
APCSP	Pickens County Humane Society	Provided pet waste information to adopt-a-thons at Petsmart, Pickens Animal Hospital, Pickens County Humane Society	Ongoing	1,840	P



## BIN & BARREL SALE

LEAD PROVIDER	SUPPORTING PARTNER	ACTIVITY	DATE	RAIN BARRELS SOLD	COMPOST BINS SOLD	TARGET AUDIENCE
APCSP	Clemson University Solid Green, SCBG	Rain barrels and compost bins sold at the SC Botanical Garden on Solid Green Day	October 29, 2014	105	34	GP, R

*APCSP hosted a Bin & Barrel Sale at the SC Botanical Garden in the Fall. In a six-month follow-up survey, 57% of respondents set up their rain barrels and 100% set up their compost bins. 37% of respondents learned about the event in the newspaper, and 37% learned about the event through our website and email.*

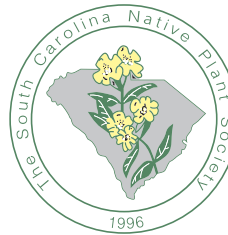




# Public Education & Involvement

## Programs: NATIVE PLANTS

LEAD PROVIDER	SUPPORTING PARTNER	ACTIVITY	DATE	ESTIMATED # OF IMPACTS	TARGET AUDIENCE
SCNPS		Bi-monthly Native Plant Education presentation with guest speakers at Southern Wesleyan University	Ongoing	300	GP, R
SCNPS		Native Plant Sale	April 26 & October 18, 2015	150	GP, R
SCBG		Plant Sale	April 26 & September 19, 2015	250	GP, R



## SOIL SAMPLES

LEAD PROVIDER	SUPPORTING PARTNER	ACTIVITY	DATE	ESTIMATED # OF IMPACTS	TARGET AUDIENCE
Clemson Extension	Clemson Agricultural Lab	Soil samples analyzed for residents and commercial audiences in Anderson County to determine the correct amount of fertilizer application	2014	824	C, R
Clemson Extension	Clemson Agricultural Lab	Soil samples analyzed for residents and commercial audiences in Pickens County to determine the correct amount of fertilizer application	2014	422	C, R
Clemson Extension	Clemson Agricultural Lab	Plant Problem Clinic Submissions at the Anderson County Clemson Extension Office	2014	12	C, R
Clemson Extension	Clemson Agricultural Lab	Plant Problem Clinic Submissions at the Pickens County Clemson Extension Office	2014	11	C, R

# Public Education & Involvement

## Clemson Extension Programs

LEAD PROVIDER	SUPPORTING PARTNER	ACTIVITY	DATE	ESTIMATED # OF IMPACTS	TARGET AUDIENCE
Clemson Extension	SC DNR, SCBG	Master Gardener - Upstate; 40 volunteer hours required per year	2014	24	GP, R
Clemson Extension	SC State Parks, SC DNR, PCSP, SCBG	Master Naturalist - Upstate; 30 volunteer hours required per year	2014	20	GP, R
Pickens County 4-H, SCBG	PCSP	Jr. Naturalist program introducing children to natural resources	2014	8	YT
Pickens County 4-H		Cloverbud 4-H Club with a science focus	2014	5	YT
Anderson & Pickens County 4-H	APCSP, SC DNR	4-H2O Day Camp on Lake Hartwell at the Clemson Outdoor Lab	July 28-30, 2014	15	YT
Pickens County 4-H	APCSP	Jr. Master Gardener books, rain barrels, raised beds, compost bins, and garden supplies given to participating schools	Ongoing	520	YT

South Carolina  
**Master Gardener**  
 a Clemson Extension Program



# Public Education & Involvement Highlight

## Adopt-A-Stream

LEAD PROVIDER	SUPPORTING PARTNER	ACTIVITY	DATE	ESTIMATED # OF IMPACTS	TARGET AUDIENCE
APCSP	AU, SWU	Adopt-A-Stream Bacteria Training at AU	January 18, 2014	20	HE, R
APCSP	AU, SWU	Adopt-A-Stream Chemical Training at AU	February 1, 2014	8	HE, R
APCSP	AU, SWU	Adopt-A-Stream Chemical and Bacteria training at AU	August 23, 2014	18	HE, R
APCSP	AU, SWU	Adopt-A-Stream Macroinvertebrate training at AU	September 6, 2014	16	HE, R
GA AAS	APCSP	Adopt-A-Stream Train the Trainer	December 13, 2014	3	HE, R

*Georgia Adopt-A-Stream is a volunteer based monitoring program that started in Georgia but has now spread across the Upstate of South Carolina. The five programs goals that stand for ADOPT are to increase public Awareness, collect quality baseline water quality Data, gather Observations, encourage Partnerships between citizens and their local government, and provide citizens with the Tools and Training to evaluate and protect their local waterways. Volunteers are trained by trainers in order to go out and monitor their local streams. Trainings are in chemical (pH, temperature, conductivity, dissolved oxygen), bacteria (E.coli), macroinvertebrates, and amphibians. By testing key factors like dissolved oxygen, macroinvertebrates and bacteria levels, volunteers hope to gain a better understanding of the health of the water.*

VOLUNTEER ORGANIZATION	SAMPLE SITE(S)
Anderson University	Rocky River - 2 sites; Cox Creek - 1 site
Clemson University, Southern Wesleyan University	Hunnicut Creek - 3 sites
Southern Wesleyan University	12-Mile River - 2 sites
Save Our Saluda	North Saluda River - 3 sites; Middle Saluda - 1 site; South Saluda - 1 site
Lake Cunningham	Lake Cunningham - 2 sites; Sliding Rock Creek - 1 site; Richland Creek - 1 site
Greenville High School Citizen Science Club	Reedy River - 3 sites
Lake Conestee Nature Park	Reedy River - 1 site
Tyger River Foundation	Tyger River - 1 site
USC Upstate Watershed Ecology Center	Pacolett River - 2 sites
Waterloo Water Wizards	Reedy River - 2 sites





## Programs

### COMMUNITY LITTER SWEEPS

LEAD PROVIDER	SUPPORTING PARTNER	ACTIVITY	DATE	ESTIMATED # OF IMPACTS	TARGET AUDIENCE
FOLKS		The Friends of Lake Keowee Society hosted a litter sweep, collected 12 40-gal bags of trash	2014	200	B, R
FOJ		Roads to Paradise Adopt-A-Highway litter pickup	March 1, 2014	8	B, R
City of Liberty		City Sweep (78 bags of trash)	April 26, 2014	60	C, R
FOJ	Devils Fork State Park	FOJ VIP Day - 75 bags (350 pounds) of litter were picked up	September 13, 2014	125	B, R, YT
SOS		Litter clean up along the Middle Saluda River	September 13, 2014	16	R
Table Rock State Park		Table Rock State Park clean up	September 20, 2014	10	R
City of Liberty		City Sweep (22 bags of trash)	October 18, 2014	20	C, R
FOLKS		FOLKS hosted Island Keepers Picnic	October 22, 2014	70	B, R
Easley High Environmental Club		Easley High School campus clean up	December 10, 2014	16	YT



*“Litter has been reduced by 59% over the past ten years. Unfortunately, though, there are still people who insist on littering. Our state and local governments do not have the resources available to clean up the litter on our roadways. Our wonderful volunteers are invaluable to keeping our state clean. Clean communities are safe communities. Clean communities are good for tourism and economic development. Clean communities are a source of pride for all of us who call South Carolina home.”*

- Adopt-A-Highway website

### SC DOT ADOPT A HIGHWAY

COUNTY	TOTAL POUNDS COLLECTED	TOTAL MILES ADOPTED	NUMBER OF PARTICIPANTS	TOTAL GROUPS PARTICIPATING
Anderson	10,507	386	360	45
Pickens	14,415	112	708	56



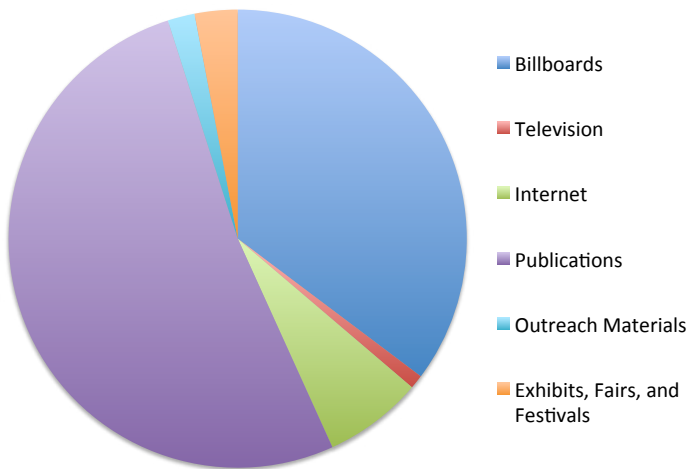
## Partner Committee Meetings

LEAD PROVIDER	SUPPORTING PARTNER	ACTIVITY	DATE	ESTIMATED # OF IMPACTS	TARGET AUDIENCE
PCSP, APCSP		Quarterly Meetings	Ongoing	20	M, T
Foothills Trail Conference		Board Meetings	Quarterly	12	NR, R, T
PCBEAC	Pickens County, PCSP	Committee Meetings	Monthly	15	M, R, T
LHA		Board & Technical Committee Meetings, Annual Meeting	Monthly	7	B, R, T
Clemson University Solid Green		Board Meetings	Monthly	17	HE
SCNPS		Board Meetings	Monthly	14	GP, R
FOLKS		Board Meetings, Annual Meeting	Bi-monthly	13	B, R
FOJ		Board & Working Group Meetings	Bi-monthly	19	B, NR, R, T
Save Our Saluda		Annual Meeting	January 23, 2014	40	B, HE, NR, R
Clemson Extension		Forestry Meeting	January 28, 2014	28	NR, R
Clemson Extension		Pickens County Extension Advisory Committee Meeting	February 19, 2014	17	M, R, T
LHA Covekeepers		Covekeepers Volunteer Watch group	February 22, 2014	14	B, R
PCSP		Elected & Appointed Officials Stormwater Luncheon	April 24, 2014	36	EA, M
Georgia Adopt-A-Stream		Regional Meeting for the Savannah River Basin	July 24, 2014	25	HE, M, NR, R, YT
Clemson BSGSA		What's in our Waters Meetings	August 26, November 14, 2014	9	HE
Carolina Clear		Carolina Clear Team Meeting	September 15-16, 2014	10	T
Clemson Extension		Anderson County Extension Advisory Committee Meeting	November 5, 2014	20	M, R, T
Upstate Forever		Upstate Stormwater Managers Meetings	November 5, 2014	9	M, T

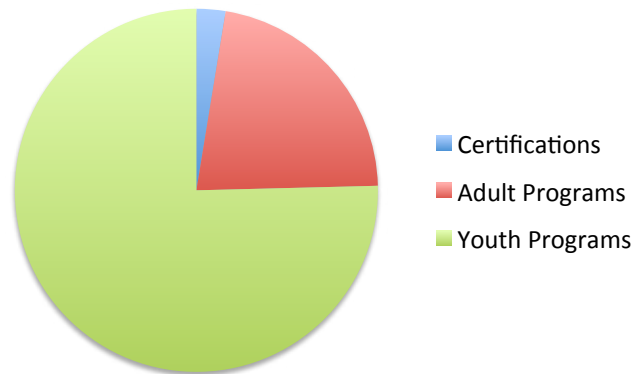
# Outreach Summary

The Anderson & Pickens Counties Stormwater Partners impacted approximately xxx people through mass media, education, and involvement in 2014. Indirect outreach methods resulted in 1,114,809 impacts through mass media efforts. Direct methods reached 28,257 individuals through presentations, trainings, workshops, and public involvement opportunities.

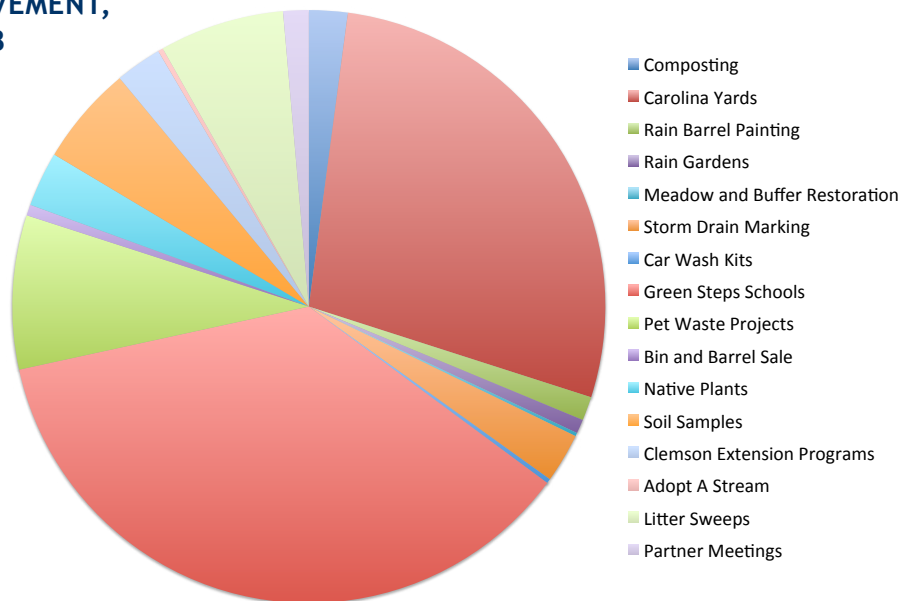
## MASS MEDIA, TOTAL IMPACTS: 1,114,809



## PUBLIC EDUCATION, TOTAL IMPACTS: 5,298



## EDUCATION AND INVOLVEMENT, TOTAL IMPACTS: 23,393





## Highlighted Articles

**SA** Pickens County Courier Wednesday, November 12, 2014



### *Dacusville Cub Scouts mark storm drains*

Cub Scout Pack 132 is helping the Dacusville community be more aware of clean water by marking storm drains. The plastic markers have the words "No Dumping, Drains to Waterways" to remind everyone that pollution that goes into a storm drain, ends up in our creeks, rivers and lakes. When it rains, stormwater runoff from our streets and yards flows into ditches or storm drains then empties directly into our waterways untreated. Any pollutants like litter, cigarette butts, soil, grass clippings, leaves, pet waste, fertilizers or automotive oils can be carried by stormwater and end up in our waterways. The Cub Scouts marked storm drains during one of their litter pick ups, which are held four times a year. Also, the Pack is starting a new service project: a community garden at the Dacusville Community Center. To mark storm drains in your neighborhood, contact Cathy Reas Foster, Pickens County Stormwater Partners, at [creas@clermson.edu](mailto:creas@clermson.edu).

## Highlighted Articles

6 » Wednesday, February 12, 2014 » INDEPENDENT MAIL

### HOMETOWNER

#### PICKENS COUNTY



"Traveling Trash Bash" trailer.

## 'Traveling Trash Bash' heads to elementary schools in February

The Pickens County Beautification and Environmental Advisory Committee is scheduled to present the "Traveling Trash Bash" to all third-graders in the 16 Pickens County elementary schools during February. The overall goal is to teach environmental concepts — recycling, composting, water conservation, litter control, beautification, and storm water pollution.

The volunteer group will present this educational, fun-filled program for the 13th consecutive year. The third-grade students at

each school move in small groups through the six different stations prior to a group assembly to wrap up the fun and learning.

Each student gets a T-shirt and a "take home packet" with educational information, as well as fun activities to be shared with family. Scores from pre-tests and post-tests are compared to determine improvement. The goal is to encourage wise use of natural resources.

The colorful Trash Bash trailer will be used to transport equipment and

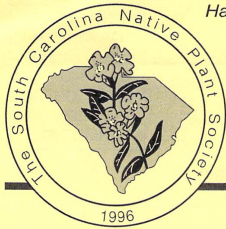
teaching materials to the schools. The trailer is provided by Pickens County with technical support from the Solid Waste Reduction and Recycling Department.

Volunteers assisting with the TTB include retired college professors, retired teachers, professionals, Pickens County Litter officers, parents, local citizens, and Clemson University students.

For more information, contact Gina McLellan at 864.650.6979 or Charles Gill at 864.982.2358.



## Highlighted Articles



Have you heard about our GREENHOUSE opportunity? CHECK the [Bulletin Board!](#)

For updates and more information, go to [www.scnps.org](http://www.scnps.org)

## UPSTATE happenings

JULY 2014 NEWSLETTER OF THE UPSTATE CHAPTER OF THE SC NATIVE PLANT SOCIETY

### Upcoming Events

**Wednesday, July 9, 9:00 am**  
Field trip to Nancy Barnette's property and N. Pacolet River, Saluda, NC

*Leaders: Nancy Barnette and Dan Whitten*  
Carpools meet at 8 am or meet at 9 am at the hike site.

Let's go to the cool mountains to explore a most interesting private property which includes the headwaters of the N. Pacolet River. Nancy Barnette has invited us to do a one way hike (we will do a car shuttle) from her house to a cottage on her property where we will eat lunch. The hike will be through a wild area and the trail is not highly groomed. We will cross the river (headwaters) twice. Nancy expects the turk's cap lily, black cohosh and astilbe to be in bloom and we will see many other native plants along the way. There is a waterfall on the property and we may hike to it if there is time.

Please wear field clothing and shoes that can get wet. Bring a hiking stick, lunch, water, and sunscreen.

There are two carpool sites: Holly Springs Store at the intersection of Hwys 11 and 178 in Pickens, and Cherrydale Mall in Greenville, in the lot in front of Regal Cinemas Cherrydale Stadium 16 at 3221 N. Pleasantburg Dr.

Meet at one of the carpool sites at 8 am or drive directly to 685 Mine Mountain Road, Saluda, NC 28773, arriving no later than 9 am.

Email [judy\\_seeley@hotmail.com](mailto:judy_seeley@hotmail.com) to reserve for the hike. Please include a cell phone number for last minute communications.

**Tuesday, July 15, 7:00 pm**  
**Program: Create a Carolina Yard!**  
*Speaker: Cathy Reas Foster (See Page 1.)*

**Thursday, August 7, 8:30 am - 12 noon**  
**Field Trip: "Lookin' at Paw Paws"** at Clemson University's Musser Fruit Research Center and Richard Cain's property.

*Leaders: Dave Ouellette & Richard Cain*  
Paw Paws, our native "tropical" fruit tree, have generated lots of interest in the past few years.

... continued on page 2



Stormwater pollution is our most common cause of water pollution and is a challenging water quality problem. Unlike pollution from industrial or other point source discharges, stormwater or non-point source pollution is caused by the daily activities of people everywhere. Rainwater and snow-melt run off streets, lawns, farms, and construction and industrial sites and pick up fertilizers, pesticides, sediment, oil and grease, bacteria and many other pollutants on the way to our rivers, lakes, and coastal waters.

Because stormwater pollution is caused by so many different activities, traditional regulatory controls will only go so far. But each of us can help by managing our own landscapes in a way that enhances water quality and protects the environment.

#### Create a Carolina Yard!

Clemson Extension Service's "Carolina Yards" program was created to help homeowners with landscape management. The Extension Service's Cathy Foster will describe and illustrate this popular program, whose goal is to assist homeowners in creating an environmentally-friendly yard that will ultimately protect and enhance the watersheds that we all depend on.



The Carolina Yards program includes a user-friendly, comprehensive website that lists a dozen specific actions you can take to protect the environment as you beautify your surroundings. You can even accumulate "inches" for each action until you reach 36 inches and achieve certification of your "Carolina Yard."

On the Carolina Yards website, clicking one of the "actions" listed leads to a page that provides specific steps, tips, and even videos about the topic. You can get an overview of environmentally-friendly lawn care, for instance, or you can pursue in-depth information about particular aspects of the topic – fertilizing, mowing, watering, or other topics.

The Carolina Yards program describes low maintenance, low cost actions that will enhance the environmental quality of your yard, neighborhood and surrounding waterways. That's a big impact for a small investment of time and effort. Some of the actions, such as reducing the need for the use of chemicals, removing invasives and adding native plants, also include a bonus — attracting more butterflies and birds to your yard!

— Amy Fendley

### Cathy Reas Foster

Natural Resources & Carolina Clear Agent • Pickens County Extension Service

**Tuesday, July 15, 7:00 pm**

Founders Hall in Dining Commons,  
Southern Wesleyan University, Central

For a map and more information, visit <http://www.scnps.org>

SCNPS: Working to preserve, protect & restore native plant communities in South Carolina









## Highlighted Fliers and Posters



## Windstorm's Composting Tips

*Composting is nature's way of recycling organic materials and has many environmental benefits. It is a natural fertilizer and does not add harmful chemicals to our waterways. With a little bit of time, you will have fresh, rich soil ready to use in your garden!*

### Why use Compost?

-  Maintains moisture in the soil and reduces stormwater runoff
-  Increases nutrients in the soil
-  Reduces the need for chemical fertilizers and pesticides
-  Saves you money by using less water, fertilizers and pesticides
-  Reduces kitchen and yard waste sent to the landfill
-  Decreases pest problems for plants





**CarolinaYARDS**  
A CLEMSON EXTENSION SERVICE  
[www.clemson.edu/cy](http://www.clemson.edu/cy)



### How to build your own compost bin...

- ✓ Build or purchase a compost bin sized about 3' x 3' x 3'.
- ✓ Place the bin in a well-drained and slightly shaded location.
- ✓ Use a cover to keep animals out.

### Ingredients:

-  **Greens:** Yard and plant clippings, fruit and vegetable scraps, coffee grounds
  -  **Browns:** Dead leaves, wood chips, and paper
  -  **Water:** Keep the compost moist like a sponge
  -  **Air:** Turn the compost at least once a week
- Do not compost meat, oil or dairy products!*

ANDERSON & PICKENS COUNTIES  
**stormwater**  
**PARTNERS**

For more information visit [www.clemson.edu/carolinaclear/apcsp](http://www.clemson.edu/carolinaclear/apcsp).

*Printed on recycled paper*

## Highlighted Fliers and Posters



### Gilli's Pool Care Tip Sheet

*Pool and backwash water is treated with chlorine and other chemicals and contains dirt particles, leaves, sunscreen residue and potentially harmful bacteria. To drain your swimming pool (or hot tub), please follow these tips to protect our creeks, rivers and lakes.*



Shut off the chlorination system or stop adding chlorine one week before draining, or use a dechlorination additive.



Make sure the water does not contain algaecides that may harm fish, aquatic plants and animals.



Check to make sure the pH level is between 6.5 and 8.5, and remove algae and debris.



Slowly drain the water onto a vegetated area so that it soaks into the ground and does not cause erosion.



Do not drain the water onto your neighbor's property or into a ditch.

**It is illegal for backwash or chlorinated pool water to be discharged to the storm drain system or a waterway!**



#### **Other eco-friendly pool tips:**



Maintain the pool filter and skim debris.



Use a variable speed pump and set on a timer.



Use a pool cover to keep heat in and debris out.



Use ultraviolet or other eco-friendly pool cleaners.

**Talk to your pool service professional about these tips!**

## Stormwater Telephone Survey

New and updated programs, outreach materials and measures of impact will result from the 2013 telephone survey that was instrumented across each Carolina Clear consortium area. With feedback from partners and a full evaluation of the utility of 2009 responses in program development, phonecalls began in the fall of 2013 to collect information on the environmental attitudes, awareness and behaviors of adults living within each consortium outreach area. Repeated questions, such as the selection of the best definition for watershed, will be used to measure the impact from the region's collective pollution prevention and awareness programs. New questions, such as the one on storm drain marker awareness and what icon or wording can be recalled on a storm drain marker, will provide measures of impact and potential new outreach methods.

Selected questions will be reviewed for statistical significance and data summaries will be available by the winter of 2014-2015. More information on the survey, questions asked and regular updates are available at <http://www.clemson.edu/public/carolinaclear/surveys2013.html>.

A preliminary results presentation will be given at the South Carolina Water Resources Conference held October 15-16, 2014 in Columbia.



The telephone survey will identify behaviors that affect stormwater runoff and pollution, such as where an owner washes their car and boat.



# Appendix D

## Education Plan

		Planning Process		
		Program/ Activity	Target Behavior	
		Target Audience		
		LID - rain gardens, bioswales, bioretention, perv	Erosion control	Homeowners and Commercial
		Carolina Yards and Schoolyards	Erosion control	Homeowners and Schools
		Detention pond vegetation	Erosion control	Neighborhoods and Commercial
		Rain Barrels	Erosion control	Homeowners, Schools, and Commercial
		FOG packets	FOG	Restaurants, School cafeterias, Industry
		FOG presentations	FOG	Restaurants, School cafeterias, Industry
		Stormdrain marking	FOG	Neighborhoods, Communities, youth
		Pet waste stations	Pet waste	City, County Parks and Dog Parks
		Educational displays	Pet waste	Vets, Groomers, Humane Societies, Pet stores
		Giveaways - frisbees, bag clips, bandanas	Pet waste	Pet owners
		Automotive Packets	Petroleum products	Automotive shops, City and County employees
		Nutrients	Fertilizer runoff	Homeowners, Landscapers, City and County employees
		Watershed postcards, poster, or display	Watershed awareness	General public and schools
		Event displays	All	
		City and county displays	All	
		Stormwater Runoff SK	All	

# Authors & Acknowledgements

**RACHEL DAVIS**

Anderson County Stormwater Partners Coordinator

**JON BATSON**

Anderson County Stormwater Manager

**ADAM CROMER**

City of Anderson Stormwater Manager

**SCOTT HANKS**

City of Belton Director of Utilities

**LADONNA PEOPLES**

Clemson Cooperative Extension - Anderson County

**KATIE GIACALONE**

Clemson Carolina Clear Coordinator

**CHARLY MCCONNELL**

Clemson Cooperative Extension - Pickens County

**CATHY REAS FOSTER**

Pickens County Stormwater Partners Coordinator

**SCOTTIE FERGUSON**

Pickens County Stormwater Manager

**BENNIE LANGLEY**

Land Planning Associates, Inc.  
City of Easley, Stormwater Representative

**OLEN HAMLIN**

City of Liberty Stormwater Manager

**CORY COX**

City of Pickens Public Utilities Director

**RENEE WATSON**

Clemson Cooperative Extension - Pickens County



*Carolina Clear is a program of Clemson University's Public Service Activities. Information is provided by Faculty and Cooperative Extension Agents. Clemson University Cooperative Extension Service offers its programs to people of all ages, regardless of race, color, sex, religion, national origin, disability, political beliefs, sexual orientation, marital or family status and is an equal opportunity employer.*


ANDERSON & PICKENS COUNTIES  
**stormwater**  
**PARTNERS**  
A CLEMSON EXTENSION SERVICE



*Rain garden workshop at the South Carolina Botanical Garden, October 22, 2014.*



[www.clemson.edu/carolinaclear](http://www.clemson.edu/carolinaclear)

 Follow us at [www.facebook.com/pages/Carolina-Clear](https://www.facebook.com/pages/Carolina-Clear)