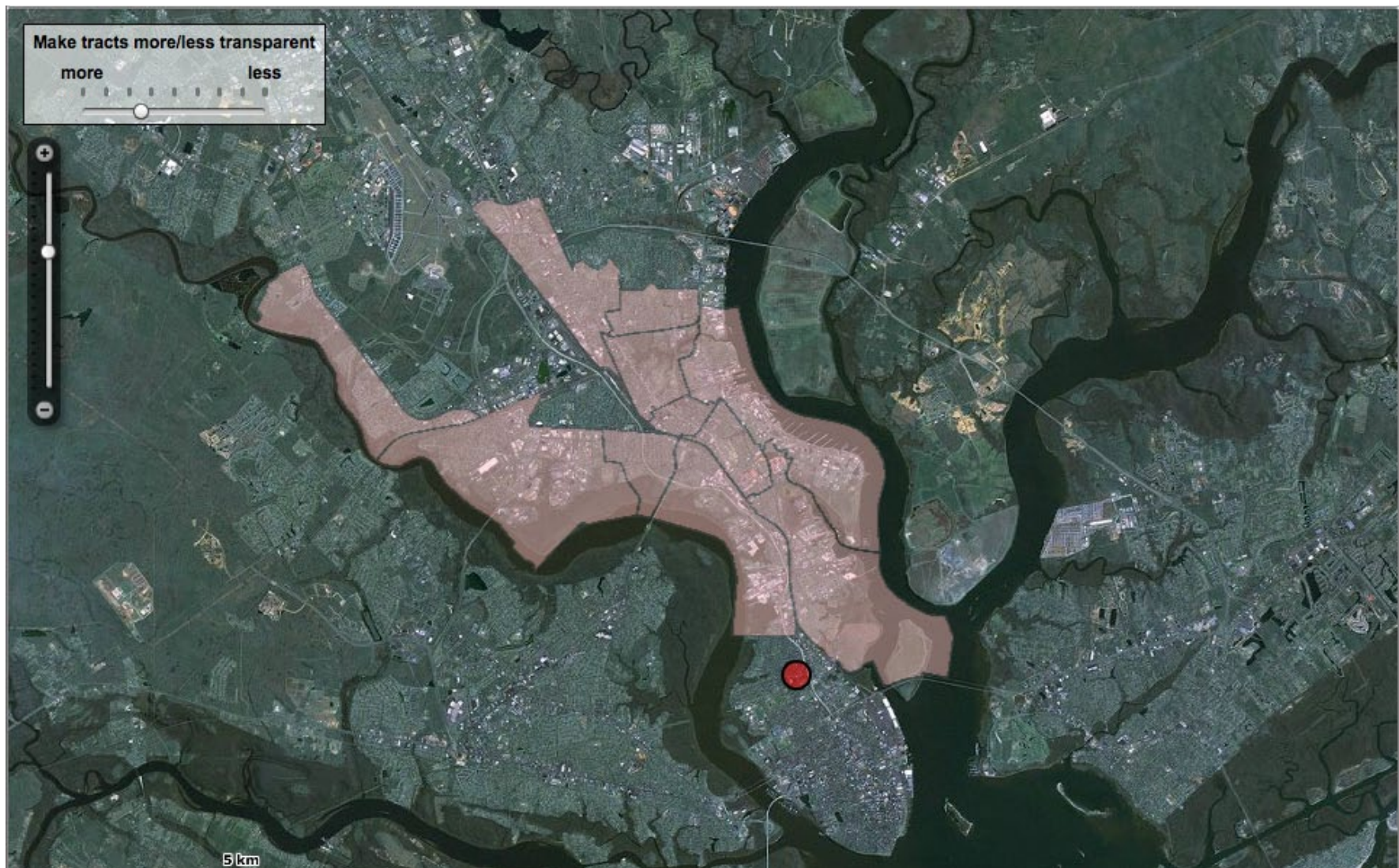
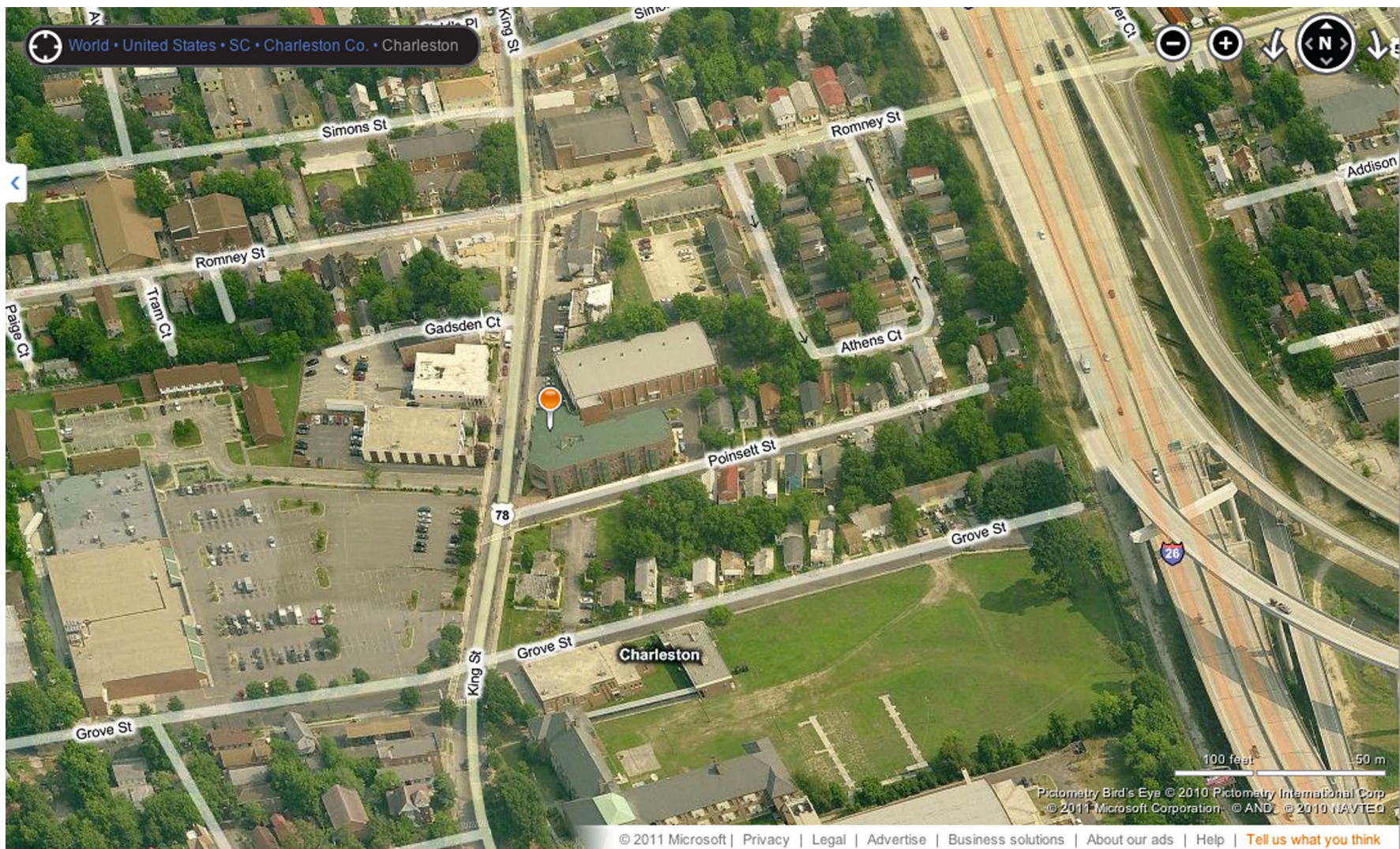


[charleston]
VERTICAL FARM



[charleston] VERTICAL FARM



PORT CITY PAPER SITE
1056 KING STREET

[charleston] VERTICAL FARM

meddin
target tire
port city paper



[charleston]
VERTICAL FARM





COMMUNITY

engagement

Does it fit with the fabric of the community?

This location tells us that if we were to build a vertical farm, the bottom floor:

should act as a community center

promote education (cooking, nutrition, plants, sciences)

be hands on, interactive

inclusion, community is an active participant

meddin
target tire
port city paper

[charleston]
VERTICAL FARM



COMMUNITY OUTREACH

educating the stakeholder

[charleston]
VERTICAL FARM



corporate



local



vertical



Charleston Charter School of Math and Science



Dee Norton Center



North Central Apartments [senior home]

BONUSES:

community/neighborhood

school

library

mosque

church

strong existing community

social justice

access

parking



food lion

Collaboration with adjacent businesses

- integration with a grocery
- change Food Lion business model
- becomes prototype
- influence on national level

[charleston] VERTICAL FARM

meddin
target tire
port city paper





CHALLENGES:

building orientation

- southern exposure is blocked by neighboring building

- could it be retrofitted structurally

parking/access

- negotiate parking with Food Lion?

pedestrian traffic/crosswalks

safety

social climate

farming is inter-generational

- parallels traditional farming with family units
- mentor/mentee relationships
- okra

deals with the process from where it begins to how it's utilized as a consumed product

[charleston]
VERTICAL FARM



[charleston]
VERTICAL FARM

meddin
target tire
port city paper

port city paper
it takes a village to farm
you are what you eat



meddin
target tire
port city paper

[charleston]
VERTICAL FARM



<http://www.youtube.com/watch?v=aMfSGt6rHos>