

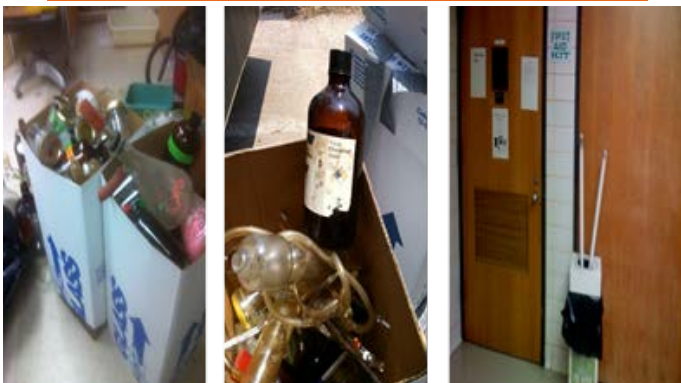
Broken Glass Box Management

- ✓ Broken glass and other waste glass items shall be disposed of in rigid, puncture resistant containers (See pictures below).
- ✓ The container should be marked “**Broken Glass**”.
- ✓ The container should not be filled to the point where any material is protruding, or that the weight of the carton would present a lifting hazard.
- ✓ Securely tape the container before depositing in the dumpster. Lab or workshop personnel are responsible for disposing of the containers of broken glass.

ACCEPTABLE BROKEN GLASS CONTAINERS



UNACCEPTABLE BROKEN GLASS CONTAINERS



Ensure that only clean or incidental contaminated (not grossly contaminated) glass is deposited to these containers.

- No Needles
- No contaminated pipettes
- No contaminated glassware
- No radioactive materials (must be disposed of as Radioactive Waste)
- No chemicals (must be disposed of as Hazardous Waste)
- No biological materials (must be disposed of as Biohazard Waste)
- **BROKEN MERCURY THERMOMETERS MUST BE DISPOSED OF AS HAZARDOUS WASTE!**
- Make sure that the box does not have a Biohazard symbol on it or is lined with a Biohazard bag.

CONTAMINATED BROKEN GLASS

1. Broken glass contaminated with chemicals, should be disposed in rigid, puncture resistant containers and labelled as **Hazardous Waste**.
2. Biologically contaminated broken glass should be discarded in a **Biohazard Sharps Container**.

For more information on safe handling of glassware, visit *Research Safety* website:

- <https://www.clemson.edu/research/safety/manuals/labSafety/sop2.html#SafeWorkEqu>
- <https://www.clemson.edu/research/safety/training/hazardous/index.html>