

Background

Clemson is proud to offer one of the first Bachelor of Arts degrees in Women's Leadership in the country, and its students and graduates live up to the program's reputation for trailblazing. Small but mighty, the program is home to top-talent students who excel academically, hold leadership positions on campus, and go on to land impressive first jobs in a wide variety of fields.

Curriculum and Career Preparation

The Women's Leadership curriculum blends innovative coursework exploring global issues facing women and girls with hands-on leadership training and team building exercises. Students develop a strong sense of community within the program and work actively to develop the skills and strategies they need to make the most of their undergraduate experience and life beyond college. All students in the program complete an internship before graduation, many take advantage of co-op or study abroad semesters, and more than half complete a second major. Because of their undergraduate experience, 90% of program participants have transitioned directly into graduate school or employment within three months of graduating from Clemson.

Unique Program Elements

Established in 2014, the senior project has become one of the most important experiences for students. One cohort designed a summer camp for girls from low-income high school schools, which led to a partnership between Colonial Life and Lower Richland High School in Hopkins, SC. For two years, Clemson's Women's Leadership students ran and worked in the camp, teaching college preparatory and leadership skills. Other cohorts have developed projects on millennial leadership and the history of women at Clemson.

The class of 2019 explored the impact of non-governmental organizations (NGOs), and many traveled to Ahmedabad, India over spring break to work with the Self-Employed Women's Association (SEWA). With over 2 million members, SEWA is India's largest NGO dedicated to helping women in extreme poverty develop economic self-reliance and improve health and education outcomes for their families. Students visited a bank for women and a women's radio station and stayed with families in rural villages, where they experienced the life of SEWA members first-hand and developed an appreciation for the strength, resilience, and perseverance of their host families. Global exposure is an important priority of the Women's Leadership program, and the eight students who went to India fully lived out that mission.

Funding Priorities

The Women's Leadership program is intent on supporting students, especially those who might be from underrepresented groups, by providing scholarships, study-abroad opportunities, nationally-recognized speakers, and student travel to conferences. The program is committed to raising awareness about issues that impact women and creating opportunities for young women with leadership potential and the will to make a difference in their communities.

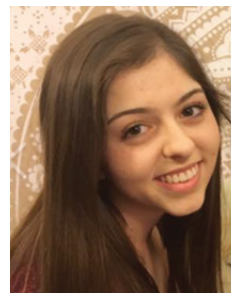


▶ STUDENTS VISIT WITH LOCAL WOMEN IN AN ADULT LITERACY WORKSHOP IN A REMOTE VILLAGE TWO HOURS FROM AHMEDABAD, INDIA.



“ BEING A WOMEN'S LEADERSHIP MAJOR IS INSPIRING BECAUSE I AM SURROUNDED BY A STRONG GROUP OF WOMEN WHO WANT TO EMPOWER EACH OTHER TO CREATE CHANGE IN OUR WORLD. ”

- GRAY LEE '17



“ WOMEN'S LEADERSHIP IS AN OPPORTUNITY TO BUILD A COMMUNITY OF WOMEN WHO ARE INVESTED IN EACH OTHER'S SUCCESS. ”

- KERRY WILT '18

Make A Difference

Your gift to the Women's Leadership program will allow that mission to continue by supporting the following areas:

- Program Support – Stronger programmatic elements allow for increased visibility for students and faculty.
- Annual or Endowed Scholarships – Scholarship funds allow increased access for students from diverse backgrounds.
- Travel Grant-in-Aids – Travel can be a cost-prohibitive aspect of the program, so financial support for travel and study abroad allows students to take advantage of the full experience the major offers.

For more information on making a gift, visit clemson.edu/giving.