

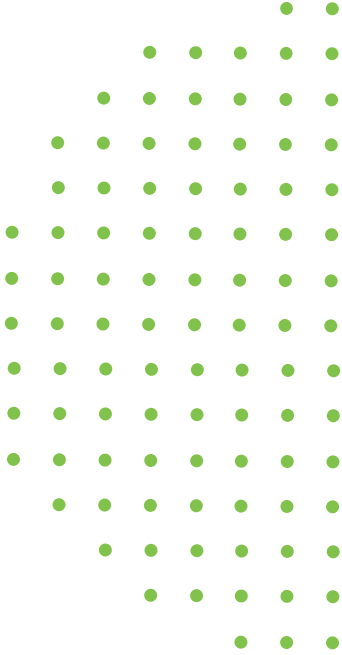


K^X
**SKILLS
COLLECTION**

Hire with confidence

K^X Skills Collection

Product catalog



Can we help you? 1-800-899-7451 (US) | 0330 100 3435 (UK) • info@SHL.com • SHL.com



Businesses that use pre-hire assessments are **36% more likely** than all others to be satisfied with their new hires.

Pre-Hire Assessments: An Asset for HR in the Age of the Candidate
Zach Lahey, Aberdeen 2015



1,500+

off-the-shelf mobile responsive assessments

44+

languages

30 million+

assessments administered annually

30+ years

of behavioral science expertise backed by I/O psychologists

K^x Skills Collection use behavioral science techniques to measure traits, skills, and fit of candidates and/or employees. A team of I/O psychologists and 30+ years of behavioral science expertise have ensured the portfolio – which can easily complement your existing assessments solutions – includes, but is not limited to:

- Job evaluation tools to help predict executive performance
- Functional behavior assessments to find the best fit for hourly employees
- Skills assessments to help you sift through talent pools
- Proven, valid, and legally defensible assessments

Assess the candidate to predict fit and performance.

Click the labels below to see details.

WHAT KIND OF JOB ARE YOU TRYING TO FILL?

Accounting/ Finance	Administrative	Call Center/ Customer Service	Cyber Security	Healthcare	Hospitality
Industrial/ Warehouse	IT/Technical	Legal	Management	Sales	Software IT

LEARN MORE ABOUT THE TYPES OF INSIGHTS WE PROVIDE

Abilities	Behavior & Personality	Fit	Skills	Specialty Offerings
-----------	---------------------------	-----	--------	---------------------

LEARN MORE ABOUT OUR TEST EXPERIENCE OPTIONS

Computer Adaptive	Data Entry	Fill-in-the-blank	Skills	Likert	Multiple Choice
Open Response	Proofreading	Simulation	Spelling	Typing	

Are you a staffing agency? We have solutions for you. [Get in touch →](#)

What kind of job are you trying to fill?

Job Function	Description	Highlights
Accounting/Finance	When a position is critical to your finances, a hiring mistake can have a serious impact on your business. Increase your organization's revenue and your clients' portfolios by hiring skilled accounting, banking, and financial personnel.	<ul style="list-style-type: none"> Accounting Terminology - Advanced Accounting Terminology - Basic Accounts Payable Accounts Receivable ACCPAC Pro Series Administrative Selector ADP - Payroll Advanced Accounting Auditing AUS Bookkeeping <p>View all accounting/finance assessments →</p>
Administrative	An amazing administrative hire can change the way your team operates. Our assessments measure a wide range of general clerical proficiencies and specialized skills used in today's work environment.	<ul style="list-style-type: none"> Advanced Spelling Algebra Analytical Skills Arithmetic [Fill-in-the-blank] Audio Typing [5 Minutes] AUS-NZ Advanced Spelling AUS-NZ Analytical Skills AUS-NZ Basic Computer Terminology AUS-NZ Basic Office Skills AUS-NZ Basic Office Skills [No Math] <p>View all administrative assessments →</p>
Call Center/Customer Service	Your organization's reputation is at stake with every service interaction. Ensure your representatives are qualified in assessing customers' needs and processing information professionally and efficiently.	<ul style="list-style-type: none"> AUS-NZ Call Centre Customer Service Survey AUS-NZ Call Centre Environment [audio] AUS-NZ Call Centre Inbound Sales Skills AUS-NZ Call Centre Outbound Sales Skills AUS-NZ Call Centre World Geography Call Center 911 Operators Call Center Advanced Spelling [Audio] Call Center Basic Spelling [audio] Call Center Consumer Collections Call Center Customer Service Scenarios <p>View all call center/customer service assessments →</p>

Job Function	Description	Highlights
Cyber Security	Cyber Security Aptitude Tests identify talent with the ability to support efforts to counter cyber threats. By assessing the behavioral attributes and cognitive aptitude required for success in cyber roles, the tests focus on identifying latent ability – traits that are hidden and not yet developed – in cyber roles rather than existing skill.	<ul style="list-style-type: none"> • Commercial Cyber Aptitude Test (CCAT) • Commercial Cyber Aptitude Test (CCAT) - Timed Version <p>View all cyber security assessments →</p>
Healthcare	The healthcare industry is growing at a rapid rate and our assessments employ extensive research techniques to meet the industry's testing demands. Our assessments effectively identify a variety of skill sets ranging from medical records and billing to administrative and clinical personnel.	<ul style="list-style-type: none"> • Age Appropriate Testing • AUS-NZ Medical Spelling • AUS-NZ Medical Terminology - General • AUS-NZ Typing - Medical [1 Minute Onscreen] • AUS-NZ Typing - Medical [3 Minute Onscreen] • AUS-NZ Typing - Medical [5 Minutes Onscreen] • Bloodborne Pathogens - Infection Control • Canadian Medical Spelling • Cultural Diversity • Dental Assistant <p>View all healthcare assessments →</p>
Hospitality	Hiring for the numerous positions within the hospitality industry can be daunting. But while the range of positions is vast, they have one thing in common: front-of-house positions can be the determining factor in brand loyalty. Assess which candidates will be the best and brightest representatives for your organization.	<ul style="list-style-type: none"> • Hospitality Associate Selector Assessment • Hotel Manager Selector <p>View all hospitality assessments →</p>
Industrial/Warehouse	With a severe shortage of skilled workers for industrial jobs and continued growth in the industry, it's imperative to find skilled candidates with the aptitude to fill open jobs. Select the right candidates with an assortment of assessments measuring positions ranging from an apprentice to master level.	<ul style="list-style-type: none"> • Arithmetic • Assembly and Matching • AUS-NZ Basic Arithmetic • AUS-NZ Basic Industrial Skills • AUS-NZ Blue Collar OH&S • AUS-NZ White Collar OH&S • AUS-NZ Entry Level Industrial Skills • AutoCAD 2004 • AutoCAD 2006 • AutoCAD 2007 <p>View all industrial/warehouse assessments →</p>

Job Function	Description	Highlights
IT/Technical	<p>Technical assessments can be a critical element of the interviewing process, providing essential information about the actual skill set of any candidate. Keep up with the pace of change in technology by evaluating your applicants' IT capabilities, from hundreds of assessments covering basic computer knowledge to advanced programming.</p>	<ul style="list-style-type: none"> • .NET Framework 2.0 • .NET Framework 3.0 • .NET Framework 4.0 • .NET Framework 4.5 • .NET Framework 4.7 • .NET Programming - ASP 2.0 • .NET Programming - ASP 3.5 • .NET Programming - ASP 4.0 • .NET Programming - ASP 4.5 • .NET Programming - ASP 5.0 <p>View all IT/technical assessments →</p>
Legal	<p>Employment in the legal industry has fluctuated, but despite the recent uptick in legal employment, there are still a disproportionate number of applicants for the number of positions. Using assessments will help narrow down your large applicant pool to candidates that have the essential expertise for a variety of legal positions.</p>	<ul style="list-style-type: none"> • AUS-NZ Legal Assistant • AUS-NZ Legal Spelling • AUS-NZ Legal Vocabulary • Basic Litigation Knowledge • Canadian Legal Assistant • Canadian Legal Spelling • Canadian Legal Vocabulary • Canadian Paralegal Skills • Concordance • Concordance 10 <p>View all legal assessments →</p>
Management	<p>Selecting and developing the next generation of leaders has significant consequences to the future growth of your organization. Designed for selection and development in upper mid-level and executive roles, this family of assessments ranges from fully automated to Consultant-driven and can even incorporate an interview.</p>	<ul style="list-style-type: none"> • Leadership Behaviors Assessment • Leadership Preference • Manager Selector <p>View all management assessments →</p>
Sales	<p>Rarely do organizations question the importance of hiring a great sales person. Our assessments provide a way to accurately measure the skills, fit, and behaviors of getting in the door, demonstrating value to the prospect, presentation, and closing the deal. Directly impact your business by hiring people that bring in the money!</p>	<ul style="list-style-type: none"> • Advanced Sales Questionnaire (ASQ) • Logical Reasoning Practice Test • Numerical Reasoning Practice Test <p>View all sales assessments →</p>

Job Function	Description	Highlights
Software	<p>Software applications have become essential to everyday business needs. Our Microsoft assessments provide full program simulations and we have partnered with Microsoft to provide accessible solutions to those with disabilities. Our simulations require the test taker to complete an actual software task in a fully functional software environment. To provide the utmost reliability, our simulations support a variety of ways to answer questions, including menus, icons, double-clicking, single clicking, right-clicking, and short-cut keys without any need for a plug-in.</p>	<ul style="list-style-type: none">• Adobe Acrobat 7.0 Standard• Adobe Acrobat 8.0 Standard• Adobe Acrobat 9.0 Standard• Adobe Acrobat X• Adobe Acrobat XI• Adobe Dreamweaver - Creative Cloud• Adobe Flash CS3 Professional• Adobe Flash Professional CS5• Adobe Flex 3• Adobe Illustrator - Creative Cloud <p>View all software assessments →</p>

Learn more about the types of insights we provide

Abilities

Reasoning assessments designed to identify individuals' capacity to evaluate, analyze, approach problems, and find resolutions.

Highlights

- CAT Logical Reasoning Test
- CAT Numerical Reasoning Test
- CAT Verbal Reasoning Test

CAT Numerical Reasoning Test

1 %tile

Individuals naturally equipped with Numerical Reasoning can easily relate to quantifiable terminology. They are most likely attracted to problems that can be worked out from a mathematical, rather than a theoretical standpoint. Breaking down various situations into numerical components provides a more clear understanding for them. Furthermore, people who are dominant in Numerical Reasoning like to have concrete answers or facts; therefore, they may not be as comfortable with abstract or conceptual terminology.

People who scored similarly are likely to:

- Find dealing with numerical concepts troublesome. Struggles to understand and reason through numerical problems.
- Become intimidated or uncomfortable when presented with a lot of numerical information.

Suggestion to Improve

- Your responses suggest that you struggle to solve numerical problems and process mathematical information.
- Surround yourself with people who are proficient at solving numerical problems. Ask them to explain how they came to a conclusion based on the information in front of them and try to replicate that the next time a similar problem arises.
- Ask for quantitative data well in advance of a scheduled team or company meeting. Always give yourself extra time to grasp the meaning and impact of reports. Over time, your level of comfort can improve.
- Identify the most simple mathematical calculations required for your job and start practicing them. By developing the most essential skills first, you will have a solid foundation to build upon.
- Talk to others about the training or education they received in the past. It is possible you may need to take a class or sign up for a training session to focus solely on your math skills for a period of time.

Behavior & Personality

Assessments tailored to individual positions at various levels and industries. We combine predictive personality traits with position-appropriate situational judgment items and reasoning ability where fitting.

Highlights

- Selectors for Professional and/or Manager roles
- Performance Indicators
- Selectors for Hourly Roles

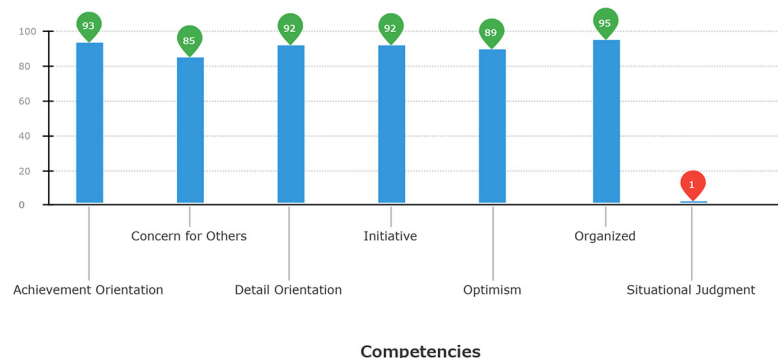
Service Associate Selector

85 %tile



Service Associate Selector

85 %tile



Fit

Comprised of our Cultural Match and Job Fit offerings, this family of assessments is designed to meet many needs, including selection across multiple positions, and identifying candidates whose values best match those of your organization and the job in question.

Highlights

- Job Fit Bank Teller
- Job Fit Call Center
- Job Fit Hospitality Associate
- Job Fit Industrial Warehouse Worker
- Job Fit Retail Associate
- Job Fit Sales
- Organizational Culture Match

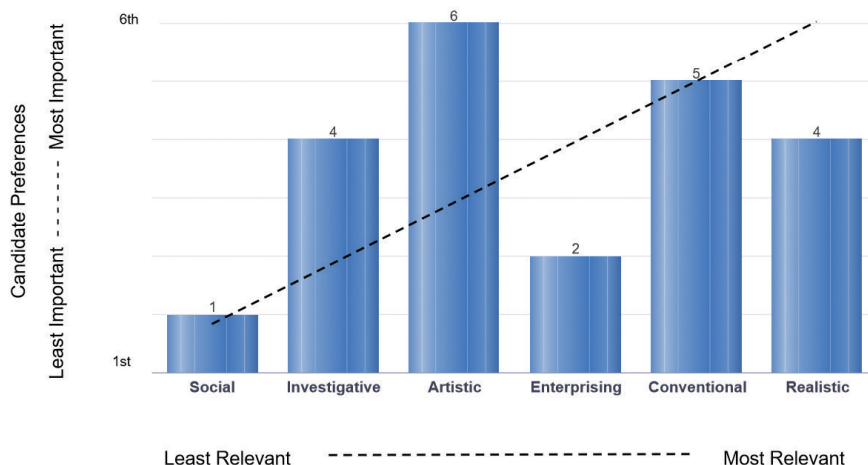
What the overall score means:

This person fits the Call Center Representative job profile better than 87 percent of candidates.



How the candidate compares to the job profile:

This chart compares the candidate's work preferences to the job profile. The bars display how strongly the candidate preferred each work dimension. The black dotted line is the Ideal Job Profile, and displays the relevance of each work dimension to the job. The candidate is a good fit if the bars are close to the dotted line. If a candidate scored the same (tied) on multiple work dimensions, they were given the same ranking.



Skills

Content validated assessments measure specific skills or knowledge in accounting, administrative, call center, financial, healthcare, industrial, legal, software, and IT/technical positions.

Highlights

- Basic Office Skills
- Call Center Environment
- Data Entry
- Microsoft Office
- Typing

Safety in the Workplace

1 %tile

Detail Score Report

Q#	Status	Task	Topic	Level	Time
1	Incorrect	Leaking Package Response	Material Handling & Storage Safety	Basic	00:00:01
2	Incorrect	Forklift Equipment for Unbanded Items	Powered Industrial Vehicles	Advanced	00:00:01
3	Correct	Driving a Forklift at a New Company	Powered Industrial Vehicles	Basic	00:00:01
4	Incorrect	Reading the MSDS	General Safety	Basic	00:00:01
5	Incorrect	Locked Out Stretch Wrapper	Machine Safety	Basic	00:00:01
6	Incorrect	recognizing radiation hazard	Material Handling & Storage Safety	Basic	00:00:01
7	Incorrect	PIV Re-training	Powered Industrial Vehicles	Advanced	00:00:01
8	Incorrect	Responsibility for Safety	General Safety	Basic	00:00:01

Specialty Offerings

Comprised of our Cultural Match and Job Fit offerings, this family of assessments is designed to meet many needs, including selection across multiple positions, and identifying candidates whose values best match those of your organization and the job in question.

Highlights

- Leadership Behavioral Assessment
- Leadership Preference
- Learning Styles Questionnaire
- Motivation Questionnaire
- Occupational Personality Inventory
- Onboarding Assessment

Inspiring People											
Easily convinced of others arguments Likely to back down in the face of opposition Views self as follower rather than leader	Assertiveness										Has strong views and is vocal with them Stands their ground when challenged Views self as a leader of others
	1	2	3	4	5	6	7	8	9	10	
Prefers to look to others for direction Avoids being in control of others Reserved and prefers a subordinate role	Authority										Takes charge and directs others Prefers a position of power and control Might appear as a dominant person
	1	2	3	4	5	6	7	8	9	10	
Uncomfortable with rapid decisions Discomfort with changing environments Overly considerate when drawing conclusions	Decisiveness										Easily makes rapid decisions Enjoys rapidly changing situations Likely impetuous and risk-oriented
	1	2	3	4	5	6	7	8	9	10	
Works best at a steady pace Prefers shorter, focused work activities Energy level stems from reaction to need	Energy										Thrives in fact paced environment Sustains activities for long periods of time Energy stems from the need for activity
	1	2	3	4	5	6	7	8	9	10	
Does not try to push own opinion Avoids debates and conflicts Open and willing to concede to others' ideas	Influence										Persuasive and convincing Likes opportunities to debate a point Shares reasoning to sell a point
	1	2	3	4	5	6	7	8	9	10	
Is reluctant to initiate conversations Nervous in the presence of others and social events Is reserved and seems to lack assurance	Social Assuredness										Very comfortable dealing with new people Takes charge in social meetings Successful giving presentations and public speaking
	1	2	3	4	5	6	7	8	9	10	
Achieving Excellence											
Demotivated by challenging targets Personal life comes before work "A successful career ≠ a successful life"	Achievement Orientation										Personal accomplishments are important Constantly searches for challenges "A successful career = a successful life"
	1	2	3	4	5	6	7	8	9	10	
Dislikes competitive environments Prefers to support and help others Avoids competitive situations	Competitiveness										Enjoys beating others Energized by competition Will seek out competition
	1	2	3	4	5	6	7	8	9	10	
Fails to deliver on commitments Less likely to take responsibility Lacks proactivity and structure	Dependability										Has high standards Manages multiple responsibilities Proactive and structured
	1	2	3	4	5	6	7	8	9	10	
Believes detail gets in the way Seen as expedient Tasks done quickly and much less precisely	Detail Orientation										High level of attention to detail Delivers extremely accurate and precise work Finds it difficult to see the bigger picture
	1	2	3	4	5	6	7	8	9	10	
Puts off unpleasant tasks Is less action-oriented than most Looks to others to lead the way	Initiative										Likes seeking ambitious challenges Takes action on job responsibilities Effectively starts tasks/projects from scratch
	1	2	3	4	5	6	7	8	9	10	
Tends to be very unstructured Can flex approach Does not value planning and organization	Organized										Highly methodical and organized Finds ambiguity difficult Needs a structured environment
	1	2	3	4	5	6	7	8	9	10	
Avoid situations that require taking chances Comfortable with minimal risk Highly uncomfortable taking risks	Risk Orientation										Seek and earn larger gains than most Likes high pressure situations Likes risky behavior far more than most
	1	2	3	4	5	6	7	8	9	10	
Tends to be very upfront Expresses emotions openly Places importance in showing their feelings	Self Control										Keeps emotion in check Rarely displays emotion openly Perceived as lacking emotional sensitivity
	1	2	3	4	5	6	7	8	9	10	

Learn more about our test experience options

Computer Adaptive

Computer Adaptive Testing (CAT) is designed to adjust the difficulty of the items administered based on the test taker's responses (success or failure), thereby minimizing seat time and increasing test security. As such, the items that test takers are presented vary depending on test taker behaviors. These assessments are designed to identify individuals' cognitive abilities including numerical, verbal, and logical reasoning.

Driving Distance Chart (miles)

Aberdeen	Aviemore	Ft William	Oban	Perth	Pitlochry	Stranraer	Stirling	Thurso	Ullapool
63									
157	60								
179	108	48							
84	81	106	92						
93	55	75	91	26					
228	222	162	172	145	168				
119	112	96	86	35	58	112			
211	139	174	222	219	192	360	250		
158	84	109	158	165	139	306	193	120	

OPTIONS

\$17.85 LOCKED

\$17.90

\$17.95

...

SUBMIT ANSWER

Data Entry

Data entry assessments require the test taker to type information into a simulation of a spreadsheet or form. The session consists of entering a series of numbers or characters. The results report indicates the speed, in keystrokes per hour, and accuracy of the data entry session. These assessments are available in audio, hardcopy, onscreen, one screen, or multiscreen formats.

Type the information from the table to the corresponding table below it. Use the 'TAB' or 'Enter' key to advance to the next field or SHIFT+TAB to move backwards. The data you input will go DOWN each column. Select the 'Submit Answer' button to complete this section.

Column 1	Column 2	Column 3	Column 4	Column 5
1426.36	45649.21	45632.12	2819.92	74152.33
23569.95	1236.96	41526.55	74069.32	625.22
74158.56	14825.36	7418.22	74921.23	41935.22
149.12	32156.36	41965.89	5263.07	46328.33
98745.41	742.36	17935.14	82934.12	4109.51
1459.52	52639.63	4108.3	71395.13	50302.6
85217.19	45219.36	12895.05	3152.1	14502.33
3256.01	27699.24	3720.27	46402.2	2995.43

Column 1	Column 2	Column 3	Column 4	Column 5

SUBMIT ANSWER

Fill-in-the-blank

A fill-in-the-blank question consists of a phrase, sentence, or paragraph with a blank space where the test taker types the appropriate answer.

Practice Question: Type the answer to the arithmetic question on the left to the corresponding field on the right. Do not use any symbols, such as currency, decimals, or periods in your response. When you are finished with the practice section, select the "Submit Answer" button.

Calculate	1 + 1 =	<input type="text"/>
Calculate	2 + 1 =	<input type="text"/>
Calculate	3 + 1 =	<input type="text"/>
Calculate	4 + 1 =	<input type="text"/>
Calculate	5 + 1 =	<input type="text"/>

SUBMIT ANSWER

Skills

Comprised of our Cultural Match and Job Fit offerings, these assessments are designed to meet many needs, including selection across multiple positions, career development, and identifying candidates whose values best match those of your organization and the job in question.

Job Fit

Question 1 of 1

Select which of the following job characteristics are most important to you and least important to you by dragging and dropping each item into one of the boxes at the bottom of the screen. The text in the boxes will indicate how many items you need to add to each box in order to move forward to the next step. Once you have completed step 4, you will move to a final summary page (step 5) where you can review and make changes to your selections before submitting them.

Abide by policies/procedures	Create new designs or models	Maintain a work routine	Talk to others
Analyze data	Demonstrate originality	Make important decisions	Teach others
Be creative	Develop relationships	Operate equipment/machinery	Think critically
Be in a leadership position	Embrace the unconventional	Oversee business activities	Understand how things work
Be organized	Engage in manual labor	Pay attention to details	Use logic to develop solutions
Be thorough and/or precise	Evaluate complex concepts	Perform clerical duties	Use math or science
Be unique	Examine and work with ideas	Perform physical activities	Use my imagination
Build or repair things	Express myself artistically	Provide aid to those in need	Work collaboratively
Care for those around me	Find beauty in my work	Show concern for others' needs	Work with art or music
Coach/develop others	Follow directions exactly	Solve difficult problems	Work with my hands
Code/categorize information	Have the power to enact change	Solve practical problems	Work with plants or animals
Communicate my opinions/views	Identify new business ventures	Spend time outdoors	Work with powerful people
Conduct research	Keep and maintain records	Start up new projects	
Coordinate business operations	Learn new things	Take risks in order to succeed	

Extremely Important

Extremely Unimportant

Add 2 items

Add 2 items

Continue to step 2 of 5 [Start over](#)

Likert

A response style that asks test takers to specify their level of agreement. It is the most widely used approach to scaling responses. A common Likert scale could include: Strongly Disagree, Disagree, Neither Agree Nor Disagree, Agree, and Strongly Agree.

Select an option with which you agree the most.

I find people who are confident and sure of themselves to be annoying and bothersome.

Strongly Disagree Slightly Disagree Not sure/in between Slightly Agree Strongly Agree

[← BACK](#) [NEXT →](#)

Multiple Choice

A response style that asks test takers to select an answer from a list.

Category	Year 1	Year 2	Year 3	Year 4
French	35	46	32	30
German	20	21	18	15
Spanish	16	14	15	10
Italian	12	10	7	6
Other	19	15	20	22

OPTIONS

66.98%

69.60%

75.26%

[SUBMIT ANSWER](#)

Open Response

These are unscored environments for Writing Samples, Reasoning, Translation Samples, and Code Samples. Gauging certain skills can be a highly subjective endeavor. While you may be able to write a grammatically correct sentence, it does not guarantee that you are a “good writer,” so we leave it to you to determine the level of writing effectiveness represented by the candidate’s sample. We do believe that providing a controlled, immediate writing environment helps to assess the skills of the writer, in context. It is for this reason that we provide this environment and encourage customers to use it, free of charge.

Please read the following instructions carefully and begin writing in response to its hypothetical parameters.

You have received a scathing letter from a valued customer, Thomas Porter of Porter and Associates, regarding your Client Services Department. Mr. Porter, a partner of the company, reported that your company sent him the wrong order and felt the service representative was rude.

Respond to your customer with your apologies and provide at least two ideas to improve the service offered by your Client Services Department.

- State the purpose of your letter and include the improvements that are currently being made to the Client Services Department.
- Present your ideas clearly and logically.
- Review your letter for any errors in spelling, punctuation, and capitalization.

Compose your response

Proofreading

Proofreading assessments present test takers with a text passage that contains spelling, grammar, and punctuation errors. These assessments measure a person’s ability to recognize and correct the errors within the text passage.

Review the passage and correct, as appropriate. When you are finished making your edits, select the “Submit” button to score this assessment.

1. To modify a word, select the word you want to edit. After you have made your changes, select “Apply Changes”. The changes you made will now be highlighted.
2. To correct punctuation errors, select the word closest to the punctuation and modify it and select “Apply Changes”.
3. To undo any change that you’ve made, select the highlighted word. The original word will appear next to “Original Text:”. Select the “Revert” link to replace your change with the original text and the word will no longer be highlighted.

At Café Lucci, entrees were of mixed quality, but the nightly pasta special was a delight. saffron pasta was served with prawns, arugula, and fresh tomato. The saffron sauce was marvelous, and the dish didnt skimp on this luxurious spice. The prawns are of a generous size, and they mingled perfectly with the slightly tart arugula to from a Distinctive pasta dish worth reccommending. On the other hand, the risotto dish was disappointing. “Risotto con Salsicce” is a traditional rice dish cooked with fresh sausage, peppers, spinach, and parmesan. But once again, the chef had a heavy hand with the salt shaker, and the perfectly-cooked risotto was marred by the blandness of the accompanying sausage. Whatever you do, save room for desert, as that is where this restaurant truly shines. There version of tiramisu, the famous italian sweet, was rich and moist, and it’s presentation on a plate dusted with chocolate made it a feast for the eyes as well as the taste buds. The “Crème Brulee” (a smooth cool custard encased in a crunchy shell of caramelized sugar was nothing short of divine!

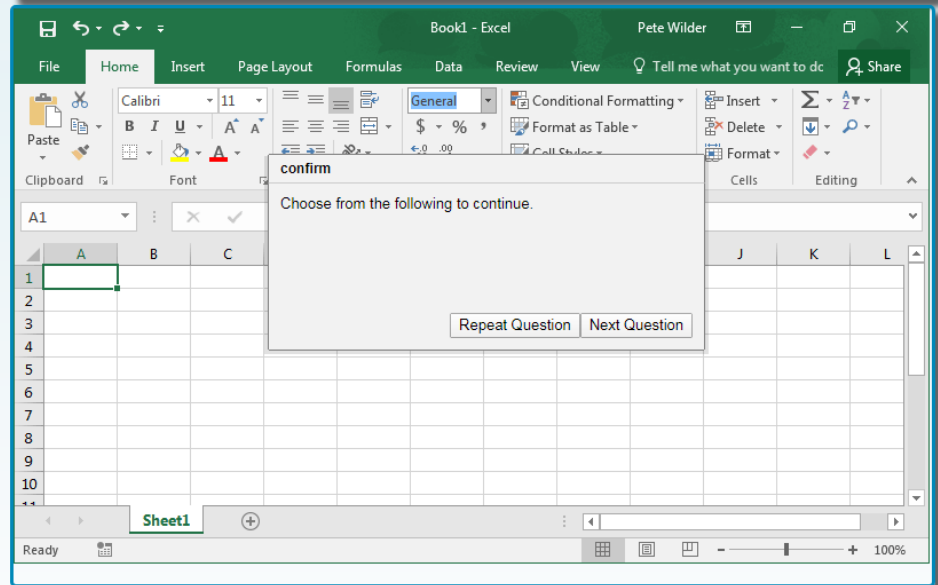
You have 15 change(s) left to make.

Simulation

These assessments simulate the environment of a Microsoft desktop application. On each question, test takers are presented with a task and must correctly perform a step or series of steps to complete the task. If the task is completed correctly, the question is scored as correct. These assessments support the vast majority of short cut keys; applicants will not be adversely scored for using the most efficient means possible to answer questions.

Question 1 of 30

Open the Excel workbook "Revenue.xls" from the default directory.



Spelling

Spelling assessments measure the test taker's ability to spell correctly. The test taker is asked to identify whether a word is spelled correctly and, if this is not the case, they are tasked with correcting the spelling of the words via audio or onscreen formats.

Decide if the displayed word below is spelled correctly. If the word is spelled correctly, you can proceed to the next question. If the word is spelled incorrectly, make the necessary corrections and proceed to the next question.

Advrtise [Reset](#)

[SUBMIT ANSWER](#)

Typing

Typing assessments measure the speed and accuracy of a test taker's typing. The assessment presents the user with a passage he/she must type as accurately and quickly as he/she can. This assessment should be given to anyone whose typing speed needs to be measured. These assessments are available in audio, hardcopy, and onscreen formats.

Type the given paragraph in the space provided.

Skiing and snowboarding are affordable winter recreational activities that millions of people across the globe participate in every year. Local radio stations will occasionally take advantage of the high volume of skiers and snowboarders by holding events, offering discounted lift tickets, and providing other perks to help make the activity a bit more affordable for families. Once there, most ski resorts offer a variety of courses which range from beginner levels to more skilled/expert levels. Many resorts also offer terrain parks for any patron who wishes to try his or her luck on an array of obstacles and jumps with varying levels of difficulty.

For individuals who are just beginning to learn, many ski areas give you the option of taking a short instructional class which teaches safety and riding techniques. Even if a customer lacks his or her own equipment, resorts offer a full line of rental equipment, including skis, snowboards, poles, boots (both ski and snowboard specific), as well as helmets, goggles, and other safety gear. Many resorts also feature a "bunny hill" slope, a great place to start for people of all ages and skill levels to warm up on before venturing out onto the bigger slopes.

Skiing and|

SUBMIT ANSWER

K^x SKILLS COLLECTION

Product catalog

Select a category to see full list of available assessments.

Accounting/Finance	Administrative	Call Center/ CustomerService	Cyber Security
Healthcare	Hospitality	Industrial/Warehouse	IT/Technical
Legal	Management	Sales	Software

DON'T SEE WHAT YOU'RE LOOKING FOR?
ASK US ABOUT OUR CUSTOMIZATION OPTIONS.

Job Function

Assessments

● Behavioral Assessments

Accounting/Finance	1.	Accounting Terminology - Advanced	46.	Financial Spelling
	2.	Accounting Terminology - Basic	47.	Fixed Assets
	3.	Accounts Payable	48.	General Accounting
	4.	Accounts Receivable	49.	General Ledger Knowledge
	5.	ACCPAC Pro Series	50.	Great Plains
	6.	Administrative Selector	51.	Individual Income Tax
	7.	ADP - Payroll	52.	International Financial Reporting Standards
	8.	Advanced Accounting	53.	Investment Management: US Equities and Equities Products
	9.	Auditing	54.	JD Edwards
	10.	AUS Bookkeeping	55.	Learning Styles Questionnaire
	11.	AUS-NZ Accounts Payable	56.	Loan Officer Skills
	12.	AUS-NZ Accounts Receivable	57.	Loan Processing
	13.	AUS-NZ Advanced Accounting	58.	Loan Underwriting Knowledge
	14.	AUS-NZ General Accounting	58.	MAS 90 - Bookkeeping
	15.	AUS-NZ MYOB Accounting Plus	60.	Motivation Questionnaire
	16.	AUS-NZ SAP for Users	61.	MYOB Accounting Plus
	17.	Bank Teller Selector	62.	NZ Accounts Payable
	18.	Bank Teller Skills	63.	NZ Accounts Receivable
	19.	Basic Bank Teller Skills	64.	NZ Bookkeeping
	20.	Bookkeeping - Professional	65.	NZ MYOB Accounting Plus
	21.	Budget Aide Skills	66.	NZ Payroll
	22.	Budget Officer Skills	67.	NZ Payroll Clerk
	23.	Business Income Tax	68.	NZ Payroll Management
	24.	BusinessObjects 5 - Client	69.	NZ Taxation Advanced
	25.	Canadian Accounts Payable	70.	NZ Taxation Basic-Intermediate
	26.	Canadian Accounts Receivable	71.	Occupational Personality Inventory
	27.	Canadian Advanced Accounting	72.	Onboarding Assessment
	28.	Canadian Bookkeeping - Professional	73.	Partnership Tax Accounting
	29.	Canadian General Accounting	74.	Payroll
	30.	Canadian Payroll	75.	Payroll Clerk
	31.	Casualty Insurance - Automobile	76.	Payroll Management
	32.	CAT Logical Reasoning Test	77.	Peachtree 2007
	33.	CAT Numerical Reasoning Test	78.	PeopleSoft Financials
	34.	CAT Verbal Reasoning Test	79.	Performance Indicator Assessment: Customer Service and Teamwork
	35.	Commercial Banking Knowledge	80.	Performance Indicator Assessment: Customer Service, Engagement, Retention
	36.	Commercial Collections	81.	Performance Indicator Assessment: Customer Service, Engagement, Sales, Teamwork
	37.	Commercial Insurance Knowledge	82.	Performance Indicator Assessment: Customer Service, Engagement, Teamwork
	38.	Corporate Tax Accounting		
	39.	Cost Accounting		
	40.	Credit Analyst		
	41.	Credit Management		
	42.	Engagement Indicator Assessment		
	43.	Financial Analysis		
	44.	Financial Management		
	45.	Financial Math		

[BACK TO CATALOG HOME](#)

Looking for a specific language? Don't see the assessment you're looking for? We can help. Get in touch to discuss →

Job Function

Assessments

● Behavioral Assessments

Accounting/Finance, cont'd	83.	Performance Indicator Assessment: Customer Service, Engagement, Teamwork
	84.	Performance Indicator Assessment: Customer Service, Retention, Sales
	85.	Performance Indicator Assessment: Engagement, Sales, Teamwork
	86.	Performance Indicator Assessment: Engagement, Teamwork
	87.	Property Insurance
	88.	Property Management
	89.	Purchasing Fundamentals
	90.	QuickBooks Pro 2006
	91.	QuickBooks Pro 2007
	92.	QuickBooks Pro 2008
	93.	QuickBooks Pro 2009
	94.	QuickBooks Pro 2010
	95.	QuickBooks Pro 2011
	96.	QuickBooks Pro 2012
	97.	QuickBooks Pro 2013
	98.	QuickBooks Pro 2013 v2
	99.	QuickBooks Pro 2015
	100.	QuickBooks Pro 2017
	101.	Quicken 2012
	102.	Quicken 2013
	103.	Reconciliation
104.	Retention Indicator Assessment	
105.	Sage Line 50	
106.	Sage Line 50 v12	
107.	Sage MAS 90/200	
108.	Sage Peachtree Pro 2012	
109.	Sage Simply Accounting Pro 2012	
110.	SAP for Users	
111.	Simply Accounting 2006	
112.	Simply Accounting 2010	
113.	South African Payroll	
114.	Teamwork Indicator Assessment	
115.	Title Insurance Knowledge	
116.	U.K. Accounts Payable	
117.	U.K. Accounts Receivable	
118.	U.K. Advanced Accounting	
119.	U.K. General Accounting	
120.	U.K. Payroll	
121.	U.K. Payroll Management	

[BACK TO CATALOG HOME](#)

Looking for a specific language? Don't see the assessment you're looking for? We can help. Get in touch to discuss →

Job Function

Assessments

Job Function	Assessments
Administrative	1. Advanced Spelling
	2. Algebra
	3. Analytical Skills
	4. Arithmetic [Fill-in-the-blank]
	5. Audio Typing [5 Minutes]
	6. AUS-NZ Advanced Spelling
	7. AUS-NZ Analytical Skills
	8. AUS-NZ Basic Computer Terminology
	9. AUS-NZ Basic Office Skills
	10. AUS-NZ Basic Office Skills [No Math]
	11. AUS-NZ Basic Office Skills [No Verbal]
	12. AUS-NZ Basic Reading Comprehension
	13. AUS-NZ Basic Spelling
	14. AUS-NZ Clerical Proofreading
	15. AUS-NZ Computer Literacy
	16. AUS-NZ Data Entry 10 Key [Onscreen]
	17. AUS-NZ Data Entry 10 Key Quick Test [Onscreen]
	18. AUS-NZ Data Entry Alpha Numeric [Onscreen]
	19. AUS-NZ English as a Second Language
	20. AUS-NZ Internet Basics
	21. AUS-NZ Numeric Filing
	22. AUS-NZ Office Grammar and Spelling
	23. AUS-NZ Office Maths Skills
	24. AUS-NZ Shorthand
	25. AUS-NZ Typing - General [1 Minute Onscreen]
	26. AUS-NZ Typing - General [3 Minutes Onscreen]
	27. AUS-NZ Typing - General [5 Minutes Onscreen]
	28. AUS-NZ Vocabulary
	29. AUS-NZ Vocabulary - Homophone Usage
	30. Basic Arithmetic [Fill-in-the-blank]
	31. Basic English - Images
	32. Basic Numeric Conversion
	33. Basic Office Skills
	34. Basic Office Skills [No Math]
	35. Basic Office Skills [No Verbal]
	36. Basic Reading Comprehension
	37. Basic Spelling
	38. Bookkeeping
	39. Business Etiquette
	40. Business Systems Analyst
	41. Business Writing
	42. Canadian Advanced Spelling
	43. Canadian Basic Spelling
	44. Canadian Cash Handling
	45. Canadian Cash Handling [No Pennies]
	46. Canadian Data Entry Alpha Numeric [Onscreen - No French Characters]
	47. Canadian Data Entry Alpha Numeric [Onscreen]
	48. Canadian Human Resources Basics
	49. Canadian Office Grammar and Spelling
	50. Canadian Typing - General [5 Minutes Onscreen]
	51. Canadian Typing - General 2 [5 Minutes Onscreen]
	52. Canadian Typing - General 3 [5 Minutes Onscreen]
	53. Canadian Typing - General 4 [5 Minutes Onscreen]
	54. Cash Handling
	55. Clerical Proofreading
	56. Coding
	57. Comparison Skills
	58. Computer Literacy - Advanced
	59. Computer Literacy - Basic
	60. Corrective Proofreading - Independent Films
	61. Corrective Proofreading - Reply Letter
	62. Corrective Proofreading - Restaurant Review
	63. Customer Service Mindset Survey
	64. Data Entry 10 Key [Onscreen]
	65. Data Entry 10 Key Quick Test [Onscreen]
	66. Data Entry 10 Key with Decimals [Onscreen]
	67. Data Entry Alpha Numeric [Onscreen]
	68. Data Entry Check Number Database [Onscreen]
	69. Data Entry Inventory Database [Onscreen]
	70. Email Etiquette
	71. English as a Second Language

[BACK TO CATALOG HOME](#)

Looking for a specific language? Don't see the assessment you're looking for? We can help. Get in touch to discuss →

Job Function

Assessments

Job Function	Assessments	
Administrative, cont'd	72. Entrée de Données À 10 Touches - Français Du Canada [À L'Écran]	100. German Typing - General [1 Minute Onscreen]
	73. Entrée De Données - Vérification De Base De Données De Nombres - Français Du Canada [À L'Écran]	101. German Typing - General [3 Minutes Onscreen]
	74. Filing by Name	102. German-English Bilingual
	75. Following Verbal Instructions [audio]	103. Haitian Creole-English Bilingual
	76. Following Written Instructions	104. Healthcare Benefits Knowledge
	77. Française Canadienne Examen d'entrée de données alphanumériques [Onscreen]	105. Human Resources Basics
	78. French Canadian Advanced Spelling	106. Human Resources Benefits Knowledge
	79. French Canadian Basic Office Skills	107. Internet Basics
	80. French Canadian Basic Office Skills [No Math]	108. Internet Research Skills
	81. French Canadian Basic Office Skills [No Verbal]	109. Interviewing and Hiring Concepts
	82. French Canadian Basic Reading Comprehension	110. Italian Typing - General [1 Minute Onscreen]
	83. French Canadian Basic Spelling	111. Italian-English Bilingual
	84. French Canadian Office Grammar and Spelling	112. Listening Skills [audio]
	85. French Canadian Typing - General [5 Minutes Onscreen]	113. Logical Reasoning - Classifying
	86. French Canadian Typing - General 2 [5 Minutes Onscreen]	114. Logical Reasoning - Decision Making
	87. French Canadian Typing - General 3 [5 Minutes Onscreen]	115. Logical Reasoning - Deduction
	88. French Canadian Typing - General 4 [5 Minutes Onscreen]	116. Logical Reasoning - Drawing Conclusions
	89. French Canadian Writing Sample - Customer Service	117. Logical Reasoning - Mathematical
	90. French Canadian Writing Sample - Email	118. Logical Reasoning - Mathematical
	91. French Canadian Writing Sample - Thank You Letter	119. Mailroom Management Skills
	92. French Typing - General [1 Minute Onscreen]	120. Marketing Fundamentals
	93. French-English Bilingual	121. Matching - Addresses
	94. French-English Bilingual (Intermediate)	122. Matching - Images
	95. German Basic Office Skills	123. Matching - Passage
	96. German Basic Office Skills [No Math]	124. Math Word Problems
	97. German Basic Office Skills [No Verbal]	125. Numeric Filing
	98. German Data Entry 10 Key [Onscreen]	126. Numeric Proofreading
	99. German Data Entry Alpha Numeric [Onscreen]	127. Office Abbreviations
		128. Office Filing Skills
		129. Office Grammar and Spelling
		130. Office Management Skills
		131. Office Math Skills
		132. Office Reasoning Sample - People Management
		133. Office Reasoning Sample - Problem Solving
		134. Office Reasoning Sample - Project Event Planning
		135. Office Reasoning Sample - Project Time Management
	136. Office Telephone Etiquette PeopleSoft HRMS	

[BACK TO CATALOG HOME](#)

Looking for a specific language? Don't see the assessment you're looking for? We can help. Get in touch to discuss →

Job Function

Assessments

● Behavioral Assessments

Job Function	Assessments
Administrative, cont'd	137. Performance Indicator Assessment: Engagement, Safety, Teamwork
	138. Portuguese Basic Office Skills
	139. Portuguese Basic Office Skills [No Math]
	140. Portuguese Basic Office Skills [No Verbal]
	141. Portuguese Basic Reading Comprehension
	142. Portuguese Data Entry 10 Key [Onscreen]
	143. Portuguese Data Entry 10 Key Quick Test [Onscreen]
	144. Portuguese Data Entry Alpha Numeric [Onscreen]
	145. Portuguese Office Grammar and Spelling
	146. Portuguese Typing - General [1 Minute Onscreen]
	147. Portuguese Typing - General [3 Minutes Onscreen]
	148. Portuguese Typing - General [5 Minutes Onscreen]
	149. Portuguese Writing Sample - Customer Service
	150. Portuguese Writing Sample - Email
	151. Portuguese Writing Sample - Thank You Letter
	152. Portuguese-English Bilingual
	153. Project Management for IT Professionals
	154. Project Management Fundamentals
	155. Proofreader Marks
	156. Punctuation
	157. Reading Comprehension
	158. Recruiting Fundamentals
	159. Retention
	160. Sales Concepts
	161. SAS 9 - Data Analyst
	162. Shorthand
	163. Software Quality Assurance
	164. Software Testing
	165. South African Data Entry Alpha Numeric [Onscreen]
	166. South African Human Resources Basics
	167. Spanish Basic Office Skills
	168. Spanish Basic Office Skills [No Math]
	169. Spanish Basic Office Skills [No Verbal]
	170. Spanish Basic Reading Comprehension
	171. Spanish Office Grammar and Spelling
	172. Spanish Typing - General [1 Minute Onscreen]
	173. Spanish Typing - General [3 Minutes Onscreen]
	174. Spanish Typing - General [5 Minutes Onscreen]
	175. Spanish Writing Sample - Customer Service
	176. Spanish Writing Sample - Email
	177. Spanish-English Bilingual Technical Terminology
	178. Translation Sample - English to French
	179. Translation Sample - English to Italian
	180. Translation Sample - English to Portuguese
	181. Translation Sample - English to Spanish
	182. Translation Sample - French Canadian to English
	183. Translation Sample - Italian to English
184. Translation Sample - Portuguese to English	
185. Translation Sample - Spanish to English	
186. Typing - General [1 Minute Onscreen]	
187. Typing - General [3 Minutes Onscreen]	
188. Typing - General [5 Minutes Onscreen]	
189. U.K. Advanced Spelling	
190. U.K. Analytical Skills	
191. U.K. Audio Typing [5 Minutes]	
192. U.K. Basic Computer Terminology	
193. U.K. Basic Office Skills	
194. U.K. Basic Office Skills [No Math]	
195. U.K. Basic Office Skills [No Verbal]	
196. U.K. Basic Reading Comprehension	
197. U.K. Basic Spelling	
198. U.K. Bookkeeping	
199. U.K. Business Writing	
200. U.K. Computer Literacy	
201. U.K. Data Entry 10 Key [Onscreen]	
202. U.K. Data Entry 10 Key Quick Test [Onscreen]	
203. U.K. Data Entry 10 Key Quick Test [Onscreen]	

[BACK TO CATALOG HOME](#)

Looking for a specific language? Don't see the assessment you're looking for? We can help. Get in touch to discuss →

Job Function

Assessments

Administrative, cont'd	204.	U.K. Data Entry 10 Key with Decimals [Onscreen]	234.	Writing Sample - Market Research	
	205.	U.K. Data Entry Alpha Numeric [Onscreen]	235.	Writing Sample - Persuasive	
	206.	U.K. English as a Second Language	236.	Writing Sample - Sales Correspondence	
	207.	U.K. English Usage	237.	Writing Sample - Social Media (Blog)	
	208.	U.K. Maths and Reasoning Skills	238.	Writing Sample - Technical Writing [List Form]	
	209.	U.K. Maths Word Problems	239.	Writing Sample - Technical Writing [Paragraph Form]	
	210.	U.K. Office Grammar and Spelling	240.	Writing Sample - Thank You Letter	
	211.	U.K. Office Maths Skills			
	212.	U.K. Shorthand			
	213.	U.K. Towns Spelling			
	214.	U.K. Typing - General [1 Minute Onscreen]			
	215.	U.K. Typing - General [3 Minutes Onscreen]			
	216.	U.K. Typing - General [5 Minutes Onscreen]			
	217.	U.K. Writing Sample - Advertising/Marketing			
	218.	U.K. Writing Sample - Collection Letter			
	219.	U.K. Writing Sample - Customer Service			
	220.	U.K. Writing Sample - Email			
	221.	U.K. Writing Sample - Market Research			
	222.	U.K. Writing Sample - Persuasive			
	223.	U.K. Writing Sample - Sales Correspondence			
	224.	U.K. Writing Sample - Technical Writing			
	225.	U.K. Writing Sample - Thank You Letter			
	226.	U.S. Cities Spelling			
	227.	Vocabulary			
	228.	Vocabulary - Homonym Usage			
	229.	World Cities/Countries Spelling			
	230.	Writing Sample - Advertising/Marketing			
	231.	Writing Sample - Collection Letter			
	232.	Writing Sample - Customer Service			
	233.	Writing Sample - Email			
	Call Center/Customer Service	1.	AUS-NZ Call Centre Customer Service Survey	3.	AUS-NZ Call Centre Inbound Sales Skills
		2.	AUS-NZ Call Centre Environment [audio]	4.	AUS-NZ Call Centre Outbound Sales Skills

[BACK TO CATALOG HOME](#)

Looking for a specific language? Don't see the assessment you're looking for? We can help. Get in touch to discuss →

Job Function

Assessments

● Behavioral Assessments ● CCAT Assessments

Call Center/Customer Service, cont'd	5.	AUS-NZ Call Centre World Geography	36.	French Canadian Call Centre Data Entry [audio]	
	6.	Call Center 911 Operators	37.	French Canadian Call Centre Listening Skills [audio]	
	7.	Call Center Advanced Spelling [Audio]	38.	French Canadian Call Centre Telephone Etiquette	
	8.	Call Center Basic Spelling [audio]	39.	German Call Center Data Entry [audio]	
	9.	Call Center Consumer Collections	40.	German Call Center Listening Skills [audio]	
	10.	Call Center Customer Service Scenarios	41.	Inbound Call Center Selector	
	11.	Call Center Customer Service Scenarios [audio]	42.	K ^x Job Fit - Call Center	
	12.	Call Center Customer Service Survey	43.	K ^x Job Fit - Sales	
	13.	Call Center Data Entry [audio]	44.	K ^x Job Fit - Industrial - Warehouse Worker	
	14.	Call Center Environment [audio]	45.	K ^x Job Fit - Hospitality Associate	
	15.	Call Center German-English Bilingual [audio]	46.	K ^x Job Fit - Retail Associate	
	16.	Call Center Inbound Sales Skills	47.	K ^x Job Fit - Bank Teller	
	17.	Call Center Italian-English Bilingual [audio]	48.	Outbound Call Center Selector	
	18.	Call Center Listening Skills [audio]	49.	Portuguese Call Center Data Entry [audio]	
	19.	Call Center Manager Selector	50.	Portuguese Call Center Listening Skills [audio]	
	20.	Call Center Math	51.	Restaurant Manager Selector Assessment	
	21.	Call Center Outbound Sales Skills	52.	Retail Associate Selector	
	22.	Call Center Portuguese-English Bilingual [audio]	53.	Retail Manager Selector	
	23.	Call Center Reference Manual [audio]	54.	Sales Indicator Assessment	
	24.	Call Center Retention [audio]	55.	Sales Manager Selector	
	25.	Call Center Spanish-English Bilingual [audio]	56.	Sales Selector	
	26.	Call Center Technical Support	57.	Service Associate Selector	
	27.	Call Center Technical Support [audio]	58.	Spanish Call Center Customer Service Scenarios [audio]	
	28.	Call Center Telephone Etiquette	59.	Spanish Call Center Listening Skills [audio]	
	29.	Call Center U.S. Cities Spelling [audio]	60.	Spanish Call Center Telephone Etiquette	
	30.	Call Center U.S. Geographical Locations	61.	U.K. Call Centre Data Entry [audio]	
	31.	Call Center U.S. State Abbreviations [audio]	62.	U.K. Call Centre Maths	
	32.	Call Center World Geography	63.	U.K. Call Centre Telephone Etiquette	
	33.	Call Centre French Canadian-English Bilingual [audio]	64.	U.K. Call Centre Towns Spelling [audio]	
	34.	Canadian Call Centre Data Entry [audio]			
	35.	Customer Service Indicator Assessment			
	Cyber Security	1.	Commercial Cyber Aptitude Test (CCAT)		
		2.	Commercial Cyber Aptitude Test (CCAT) - Timed Version		

[BACK TO CATALOG HOME](#)

Looking for a specific language? Don't see the assessment you're looking for? We can help. Get in touch to discuss →

Job Function

Assessments

● Behavioral Assessments

Job Function	Assessments
Healthcare	1. Age Appropriate Testing
	2. AUS-NZ Medical Spelling
	3. AUS-NZ Medical Terminology - General
	4. AUS-NZ Typing - Medical [1 Minute Onscreen]
	5. AUS-NZ Typing - Medical [3 Minute Onscreen]
	6. AUS-NZ Typing - Medical [5 Minutes Onscreen]
	7. Bloodborne Pathogens - Infection Control
	8. Canadian Medical Spelling
	9. Cultural Diversity
	10. Dental Assistant
	11. Dental Hygienist
	12. Dosage Calculation
	13. French Canadian Medical Spelling
	14. General Pharmaceutical Knowledge
	15. HBV - Infection Control/Vaccination
	16. Healthcare Industry Terminology
	17. Healthcare Manager Selector
	18. HIPAA - Clinical Staff
	19. HIPAA Administration
	20. Joint Commission
	21. LPN/LVN
	22. Medical Assistant - Advanced
	23. Medical Assistant - Basic
	24. Medical Billing (CMS-1500)
	25. Medical Billing (UB-04)
	26. Medical Billing Knowledge
	27. Medical Claims Processing
	28. Medical Collections
	29. Medical Office Personnel Skills
	30. Medical Receptionists
	31. Medical Records Coding [CPT]
	32. Medical Records Coding [ICD-10]
	33. Medical Records Coding [ICD-9]
	34. Medical Records Legal Issues
	35. Medical Spelling
	36. Medical Terminal Digit Filing
	37. Medical Terminology - Abbreviations
	38. Medical Terminology - Cardiovascular System
	39. Medical Terminology - Dental
	40. Medical Terminology - ER
	41. Medical Terminology - Gastrointestinal
	42. Medical Terminology - General
	43. Medical Terminology - Integumentary System
	44. Medical Terminology - Musculoskeletal
	45. Medical Terminology - Nervous System
	46. Medical Terminology - Oncology
	47. Medical Terminology - Ophthalmology
	48. Medical Terminology - Pediatrics
	49. Medical Terminology - Pharmacology
	50. Medical Terminology - Prefixes/Suffixes/Combining Forms
	51. Medical Terminology - Psychiatry
	52. Medical Terminology - Radiology
	53. Medical Terminology - Reproduction
	54. Medical Terminology - Respiratory
	55. Medical Terminology - Root Words
	56. Nurse Practitioner
	57. Nurse Selector
	58. Nursing - Critical Care
	59. Nursing - ER
	60. Nursing - OR
	61. Nursing Assistant
	62. Occupational Therapy
	63. OSHA
	64. Pharmaceutical Terminology
	65. Phlebotomy
	66. Physical Therapy
	67. Physician Assistant
	68. Radiologic Technologist
	69. Registered Nurse (RN)
	70. Respiratory Therapy
	71. Safety Indicator Assessment
	72. Spanish Medical Terminology - General
	73. Spanish OSHA
	74. Surgical Technology
	75. Typing - Medical [1 Minute Onscreen]
	76. Typing - Medical [3 Minutes Onscreen]
	77. Typing - Medical [5 Minutes Onscreen]
	78. U.K. Medical Spelling

[BACK TO CATALOG HOME](#)

Looking for a specific language? Don't see the assessment you're looking for? We can help. Get in touch to discuss →

Job Function

Assessments

● Behavioral Assessments

Healthcare, cont'd

79. U.K. Typing - Medical [1 Minute Onscreen]
80. U.K. Typing - Medical [3 Minutes Onscreen]
81. U.K. Typing - Medical [5 Minutes Onscreen]

Hospitality

1. [Hospitality Associate Selector Assessment](#)
2. [Hotel Manager Selector](#)

Industrial/Warehouse

- | | |
|--|---|
| <ol style="list-style-type: none"> 1. Arithmetic 2. Assembly and Matching 3. AUS-NZ Basic Arithmetic 4. AUS-NZ Basic Industrial Skills 5. AUS-NZ Blue Collar OH&S 6. AUS-NZ White Collar OH&S 7. AUS-NZ Entry Level Industrial Skills 8. AutoCAD 2004 9. AutoCAD 2006 10. AutoCAD 2007 11. AutoCAD 2009 12. AutoCAD 2010 13. AutoCAD 2013 14. AutoCAD 2018 15. Basic Arithmetic 16. Basic CNC 17. Basic Electronics 18. Basic Industrial Math 19. Basic Industrial Skills 20. Basic Injection Molding Skills 21. Basic Reading Comprehension - Light Industrial 22. Basic Ruler Reading 23. Basic Warehouse Knowledge 24. Basic Wireless Communication 25. Blueprint Basics 26. Blueprint Reading 27. Canadian Pick/Pack 28. Class [A] Automotive Mechanics 29. Class [B] Automotive Mechanics 30. Class [C] Automotive Mechanics 31. Color Identification 32. Counting 33. Distribution Associate Selector | <ol style="list-style-type: none"> 33. Electrical Engineering: Electronics and Communications 34. Electrical Engineering: Power and Control 35. Electricians 36. Electronic Schematics 37. English Ruler Reading 38. Entry Level Industrial Skills 39. Finish Carpentry 40. Flooring Skills 41. Food Production 42. Forklift Operation 43. General Maintenance 44. Hazardous Material Handling 45. Home Inspection Skills 46. HVAC 47. Lathe Operator 48. Manufacturing Basics 49. Manufacturing Manager Selector 50. Map Reading Skills 51. Masonry 52. Matching - Alphanumeric 53. Matching - Alphanumeric List 54. Matching - Digit Numeric 55. Matching - Digit Numeric List 56. Matching - Industrial Images 57. Matching - Numeric 58. Matching - Numeric List 59. Math and Reasoning Skills 60. Mechanical Engineering: Machine and Tool Design 61. Mechanical Engineering: Thermodynamics Fundamentals 62. Mechanical Reasoning |
|--|---|

[BACK TO CATALOG HOME](#)

Looking for a specific language? Don't see the assessment you're looking for? We can help. Get in touch to discuss →

Job Function

Assessments

Job Function	Assessments	
Industrial/Warehouse, cont'd	64. Metalworking Skills	
	65. Metric Ruler Reading	
	66. Micrometers and Calipers	
	67. MicroStation V8i	
	68. Milling Machine	
	69. Pick/Pack	
	70. Plastic Fabrication Skills	
	71. PLC Programming	
	72. Plumbing Quality	
	73. Press Brake Operation	
	74. Print Reading - Construction	
	75. Print Reading - Electrical	
	76. Print Reading - Manufacturing	
	77. Product Packaging Skills	
	78. Quality Assurance Inspection	
	79. Resistor Color Code	
	80. Revit Architecture 2013	
	81. Rough Carpentry	
	82. Safety in the Workplace	
	83. Shipping and Receiving Clerk Skills	
	84. Shop Math	
	85. Soldering	
	86. SolidWorks 2006	
	87. SolidWorks 2012	
	88. SolidWorks 2013	
	89. Spanish Basic Industrial Math	
	90. Spanish Basic Industrial Skills	
	91. Spanish Entry Level Industrial Skills	
	92. Spanish Forklift Operation	
	93. Spanish Mechanical Reasoning	
	94. Spanish Safety in the Workplace	
	95. Spatial Reasoning	
	96. Tools and Fasteners	
	97. U.K. Arithmetic	
	98. U.K. Basic Arithmetic	
	99. U.K. Basic Industrial Skills	
	100. U.K. Entry Level Industrial Skills	
	101. U.K. Matching - Alphanumeric	
	102. Unit Conversion	
	103. Warehouse Safety and Inventory Management	
	104. Weights and Measures [Standard and Metric]	
	105. Welding	
	106. Wholesale Distribution Knowledge	
		107. Woodworking
		108. Workplace Hazardous Materials Information System (WHMIS)

[BACK TO CATALOG HOME](#)

Looking for a specific language? Don't see the assessment you're looking for? We can help. Get in touch to discuss →

Job Function

Assessments

Job Function	Assessments
IT/Technical	1. .NET Framework 2.0
	2. .NET Framework 3.0
	3. .NET Framework 4.0
	4. .NET Framework 4.5
	5. .NET Framework 4.7
	6. .NET Programming - ASP 2.0
	7. .NET Programming - ASP 3.5
	8. .NET Programming - ASP 4.0
	9. .NET Programming - ASP 4.5
	10. .NET Programming - ASP 5.0
	11. .NET Programming - C# 2.0
	12. .NET Programming - C# 3.0
	13. .NET Programming - C# 4.0
	14. .NET Programming - C# 5.0
	15. .NET Programming - C# 7.0
	16. .NET Programming - F# 4.5
	17. .NET Programming - MVC Framework (ASP 5)
	18. ABAP/4 for SAP
	19. ActionScript 3.0
	20. Active Directory Domain Services
	21. Active Server Pages
	22. Adabas DBA
	23. Adabas Natural
	24. Adabas Programming
	25. Adobe ColdFusion 10
	26. Adobe ColdFusion 8
	27. Adobe ColdFusion 9
	28. Adobe Dreamweaver CS5
	29. Adobe Dreamweaver CS6
	30. Agile Software Development
	31. AION Programming
	32. AJAX
	33. AngularJS 1.4
	34. AngularJS 1.6
	35. ANSI SQL
	36. Apache Hadoop 2.8
	37. Apache Struts 2.5
	38. Apache Web Server
	39. AS/400 Operations
	40. Assembler
	41. Assembler for K ^x Mainframe
	42. AUS-NZ Lotus Notes 5.0 for Developers
	43. AUS-NZ Lotus Notes 5.0 for Users
	44. Biztalk Server 2006
	45. BizTalk Server 2010
	46. Bootstrap 4
	47. Borland C++ Builder
	48. BroadVision
	49. BusinessObjects 5 - Designer
	50. BusinessObjects XI Release 2
	51. C Programming
	52. C++ Programming
	53. Cascading Style Sheets
	54. Cascading Style Sheets 2.1
	55. Cascading Style Sheets 3.1
	56. Cascading Style Sheets 4.0
	57. CGI Concepts
	58. CICS/COBOL
	59. Cisco Networking
	60. Cisco Router
	61. Citrix for Client Server Applications
	62. Citrix MetaFrame
	63. Citrix WinFrame
	64. Clipper
	65. Cloud Computing Core Concepts
	66. COBOL
	67. COBOL 400
	68. COBOL II
	69. Code Sample - ASP - File Operations
	70. Code Sample - ASP.NET - Date/Time Operations
	71. Code Sample - C Sharp - Date/Time Operations
	72. Code Sample - C Sharp - File Operations
	73. Code Sample - Java - Date/Time Operations
	74. Code Sample - Java - File Operations
	75. Code Sample - JavaScript - Date/Time Operations
	76. Code Sample - JavaScript - File Operations
	77. Code Sample - VB Script - Date/Time Operations
	78. Code Sample - VB.NET - Date/Time Operations
	79. Code Sample - Visual Basic - Date/Time Operations
	80. Code Sample - Visual Basic - File Operations

[BACK TO CATALOG HOME](#)

Looking for a specific language? Don't see the assessment you're looking for? We can help. Get in touch to discuss →

Job Function

Assessments

Job Function	Assessments	
IT/Technical, cont'd	81. Cold Fusion 4	
	82. Cold Fusion MX 6.1	
	83. Cold Fusion Scripting and Development	
	84. ColdFusion MX 7	
	85. COM/DCOM Development in Delphi	
	86. COM/DCOM Development in Visual Basic	
	87. Computer Technician Skills	
	88. COOL: Gen	
	89. CORBA	
	90. Core Java	
	91. Crystal Reports 11.0	
	92. Crystal Reports 14.1	
	93. Crystal Reports 7.0	
	94. Crystal Reports 8.0	
	95. Crystal Reports 8.5 for Developers	
	96. Data Architecture	
	97. Data Mining Concepts	
	98. Data Modeling Concepts	
	99. Data Warehousing Concepts	
	100. DB2 5.x DBA	
	101. DB2 Developer	
	102. DB2 v.8 Mainframe DBA	
	103. DB2 v.8 UDB DBA	
	104. Delphi 3	
	105. Delphi 5	
	106. DHTML	
	107. DreamWeaver	
	108. Dreamweaver 8	
	109. E Commerce Concepts: Deployment	
	110. EDI (Electronic Data Interchange)	
	111. Enterprise JavaBeans [EJB]	
	112. Enterprise JavaBeans [EJB3]	
	113. Ethernet Networking	
	114. FORTRAN 77/90	
	115. Google Analytics	
	116. GroupWise 5.x	
	117. Gupta Centura	
	118. HTML 2.0/3.0	
	119. HTML 4.0	
	120. HTML 5.0	
	121. HTML Webmaster	
	122. K* AIX 5.1 Administrator	
	123. K* DB2 10.5	
		124. K* DB2 11.1
		125. IMS
		126. iNet+
		127. Informatica
		128. Informatica Cloud
		129. Informix
		130. Internet Security
		131. J2EE
		132. J2SE
		133. Java EE 6
		134. Java EE 7
		135. Java EE 8
		136. Java Entry Level
		137. Java Hibernate 3.3
		138. Java Hibernate 4.3
		139. Java SE 6
		140. Java SE 7
		141. Java SE 7 Swing
		142. Java SE 8
		143. Java Server Pages
		144. Java Servlets
		145. Java Servlets 3.0
		146. Java Swing
		147. JavaScript
		148. JavaScript 1.8
		149. JavaServer Faces 2.0
		150. JCL
		151. jQuery 1.7
		152. LAN Concepts
		153. Linux Administration
		154. LoadRunner 11
		155. LoadRunner 9
		156. Lotus Domino 6 for Developers
		157. Lotus Notes 4.0 for Developers
		158. Lotus Notes 4.5 for Developers
		159. Lotus Notes 5.0 for Developers
		160. Lotus Notes Administration
		161. Macintosh Technician OS 9
		162. Macintosh Technician OS X
		163. Macromedia Director MX 2004
		164. Macromedia Flash 5
		165. Macromedia Flash MX 2004
		166. Macromedia Flash Professional 8
		167. Microsoft Access 2000 for Developers
		168. Microsoft Access 2002 for Developers

[BACK TO CATALOG HOME](#)

Looking for a specific language? Don't see the assessment you're looking for? We can help. Get in touch to discuss →

Job Function

Assessments

Job Function	Assessments
IT/Technical, cont'd	169. Microsoft Access 2003 for Developers
	170. Microsoft Access 2007 for Developers
	171. Microsoft Access 2013 for Developers
	172. Microsoft Dynamics GP 10
	173. Microsoft Exchange Server 2000 Administration
	174. Microsoft Exchange Server 2003 Administration
	175. Microsoft Exchange Server 2007 Administration
	176. Microsoft Exchange Server 2010 Administration
	177. Microsoft Exchange Server 2013 Administration
	178. Microsoft Exchange Server 5.5
	179. Microsoft Internet Information Server [IIS] 4.0
	180. Microsoft Internet Information Services [IIS] 7.0
	181. Microsoft Office 2003 Help Desk
	182. Microsoft Office 2007 Help Desk
	183. Microsoft Office 2010 Help Desk
	184. Microsoft Office 2013 Help Desk
	185. Microsoft Office SharePoint Server 2007
	186. Microsoft Office XP Help Desk
	187. Microsoft SharePoint 2010 for Developers
	188. Microsoft SharePoint 2013 for Administrators
	189. Microsoft SharePoint Server 2010 for Administrators
	190. Microsoft Site Server 3.0
	191. Microsoft Systems Management Server 2.0 [SMS]
	192. Microsoft Transaction Server
	193. Microsoft Visio 2002
	194. Microsoft Visio 2003
	195. Microsoft Visio 2007
	196. Microsoft Visio 2010
	197. Microsoft Visio 2013
	198. Microsoft Visual Studio 2010
	199. Microsoft Visual Studio 2015
	200. Microsoft Windows 10 Technical Skills
	201. Microsoft Windows 2000 Data Center Administration
	202. Microsoft Windows 2000 Professional Installation
	203. Microsoft Windows 2000 Server Administration
	204. Microsoft Windows 2000 Server Installation
	205. Microsoft Windows 2000 Server Installation Procedures
	206. Microsoft Windows 2000 Technical Skills
	207. Microsoft Windows 2003 Server Administration
	208. Microsoft Windows 2003 Server Installation Procedures
	209. Microsoft Windows 2008 Server Administration
	210. Microsoft Windows 2012 Server Administration
	211. Microsoft Windows 7 Technical Skills
212. Microsoft Windows 8 Technical Skills	
213. Microsoft Windows NT 4.0 Server Administration	
214. Microsoft Windows NT 4.0 Server Installation	
215. Microsoft Windows NT 4.0 Workstation Installation	
216. Microsoft Windows Vista Technical Skills	
217. Microsoft Windows XP Technical Skills	
218. Mobile Application Development - iOS (Objective-C)	
219. Mobile Application Development - iOS (Swift)	
220. MVS	
221. MVC Framework	
222. MySQL	
223. MySQL 5.7	
224. Netscape Webserver	
225. Network Administration	
226. Network Security	
227. Network Virtualization	
228. Network-Attached Storage (NAS)	
229. Node.js 12	
230. Novell Directory Services	
231. Novell NetWare 3.12	
232. Novell NetWare 4.x	
233. Novell NetWare 5.x	

[BACK TO CATALOG HOME](#)

Looking for a specific language? Don't see the assessment you're looking for? We can help. Get in touch to discuss →

Job Function

Assessments

Job Function	Assessments	
IT/Technical, cont'd	234. Object Oriented Programming [OOP]	278. PowerBuilder 4.0
	235. Object PAL 5.0	279. PowerBuilder 5.0
	236. Objective-C 2.0	280. PowerBuilder 6.0
	237. OLAP Concepts	281. PowerBuilder 8.0
	238. Oracle 10g DBA	282. Programming Concepts
	239. Oracle 10g for Developers	283. Python 3.5
	240. Oracle 11g Release 2 DBA	284. Python 3.6
	241. Oracle 11g Release 2 for Developers	285. QuickTest Professional 9
	242. Oracle 11i DBA	286. Rational Rose
	243. Oracle 12c DBA	287. Relational Database Design [RDBMS]
	244. Oracle 12c for Developers	288. RPG III
	245. Oracle 7.3 DBA	289. RPG IV [RPG ILE]
	246. Oracle 7.3 Developer	290. Ruby 1.8
	247. Oracle 8 DBA	291. Ruby 1.9
	248. Oracle 8 Developer	292. Ruby 2.3
	249. Oracle 8.i	293. Ruby on Rails 3.0
	250. Oracle 9i DBA	294. Ruby on Rails 5
	251. Oracle 9i for Developers	295. SAP Database
	252. Oracle Applications DBA	296. SAS 6 - IT Professional
	253. Oracle Designer 2000	297. SAS 8.2
	254. Oracle Developer 2000	298. SAS 9.3
	255. Oracle E-Business Suite R12 - Technical	299. Service-Oriented Architecture
	256. Oracle Essbase 11	300. Siebel 7
	258. Oracle Financials 11	301. Smalltalk
	259. Oracle Forms 10g	302. Solaris 10 Administrator
	250. Paradox Application Language 4.0	303. Spring Framework 2.5
	260. Pascal	304. Spring Framework 4.0
	261. PeopleCode 8.5	305. SPSS
	262. PeopleSoft 7 DBA	306. SQA Robot
	263. PeopleSoft 7 Developer	307. SQL Entry Level
	264. PeopleSoft 8 DBA	308. SQL for Client-Server Applications
	265. PeopleSoft 8 Developer	309. SQL for Desktop Applications
	266. Peoplesoft 9 DBA	310. SQL Server 2000 DBA
	267. PeopleSoft 9 Developer	311. SQL Server 2000 for Developers
	268. Perl 5	312. SQL Server 2005 DBA
	269. Perl 5.28	313. SQL Server 2005 for Developers
	270. Perl 6	314. SQL Server 2008 DBA
	271. PHP 4	315. SQL Server 2008 for Developers
	272. PHP 5	316. SQL Server 2008 R2 Analysis Services
	273. PHP 5.3	317. SQL Server 2008 Reporting Services
	274. PHP 7.0	318. SQL Server 2012 DBA
	275. PL/SQL	319. SQL Server 2012 for Developers
	276. PowerBuilder 10	320. SQL Server 2012 Integration Services
	277. PowerBuilder 12.6	321. SQL Server 2012 Reporting Services
		322. SQL Server 2014 DBA

[BACK TO CATALOG HOME](#)

Looking for a specific language? Don't see the assessment you're looking for? We can help. Get in touch to discuss →

Job Function

Assessments

Job Function	Assessments
IT/Technical, cont'd	323. SQL Server 2014 for Developers
	324. SQL Server 2014 Integration Services
	325. SQL Server 2014 Reporting Services
	326. SQL Server 6.5
	327. SQL Server 6.5 Developer
	328. SQL Server 7.0 DBA
	329. SQL Server 7.0 Developer
	330. SQL Server Integration Services
	331. SQL Server Reporting Services
	332. Storage Area Network (SAN)
	333. Sybase 11
	334. Sybase 12
	335. Sybase DBA
	336. Sybase Developer
	337. Technical Support - IT/Network
	338. Technical Support - MacOS (Mojave)
	339. Technical Support Processes
	340. Telecommunications
	341. TestDirector 8.0
	342. Transact SQL
	343. UML
	344. UNIX Administrator
	345. UNIX Programming
	346. UNIX Shell Programming
	347. UNIX Users
	348. VBScript
	349. Visual Basic 2010
	350. Visual Basic 2012
	351. Visual Basic 2017
	352. Visual Basic 4.0
	353. Visual Basic 5.0
	354. Visual Basic 6.0
	355. Visual Basic 6.0 for Applications (VBA)
	356. Visual Basic 9.0
	357. Visual C++ 2010
	358. Visual C++ 4.0
	359. Visual C++ 6.0
360. Visual FoxPro 3.0	
361. Visual FoxPro 6.0	
362. Visual FoxPro 8.0	
363. Visual Interdev 6.0	
364. Visual J++ 1.1	
365. Visual J++ 6.0	
366. VMware ESX 4.1	
367. VMware ESXi 6.0	
368. VMware Workstation 11	
369. VMware Workstation 7	
370. WAN Architecture	
371. Web Commerce Security	
372. WebLogic Portal 7.0	
373. WebLogic Server 12c	
374. WebLogic Server 7.0	
375. WebSphere 4.0	
376. WebSphere Application Server 7	
377. WebSphere MQ V5	
378. WinRunner 6.02	
379. WinRunner 7.6	
380. Wireless Networking	
381. XML	
382. XWindow Systems	

[BACK TO CATALOG HOME](#)

Looking for a specific language? Don't see the assessment you're looking for? We can help. Get in touch to discuss →

Job Function

Assessments

● Behavioral Assessments

Legal	1.	AUS-NZ Legal Assistant
	2.	AUS-NZ Legal Spelling
	3.	AUS-NZ Legal Vocabulary
	4.	Basic Litigation Knowledge
	5.	Canadian Legal Assistant
	6.	Canadian Legal Spelling
	7.	Canadian Legal Vocabulary
	8.	Canadian Paralegal Skills
	9.	Concordance
	10.	Concordance 10
	11.	Court Reporting
	12.	EEOC Compliance
	13.	French Canadian Legal Spelling
	14.	Legal Abbreviations
	15.	Legal Assistant
	16.	Legal Filing Skills
	17.	Legal Spelling
	18.	Legal Staff Skills
	19.	Legal Vocabulary
	20.	Paralegal Skills
	21.	Patent Prosecution
	22.	Sexual Harassment
	23.	Typing - Legal [1 Minute Onscreen]
	24.	Typing - Legal [3 Minutes Onscreen]
	25.	Typing - Legal [5 Minutes Onscreen]
	26.	U.K. Basic Litigation Knowledge
	27.	U.K. Legal Spelling
	28.	U.K. Legal Spelling Short
	29.	U.K. Legal Staff Skills
	30.	U.K. Legal Vocabulary
	31.	U.K. Paralegal Skills
	32.	U.K. Typing - Legal [1 Minute Onscreen]
	33.	U.K. Typing - Legal [3 Minutes Onscreen]
	34.	U.K. Typing - Legal [5 Minutes Onscreen]

Management	1.	Leadership Behaviors Assessment
	2.	Leadership Preference
	3.	Manager Selector

Sales	1.	Advanced Sales Questionnaire (ASQ)
	2.	Logical Reasoning Practice Test
	3.	Numerical Reasoning Practice Test

[BACK TO CATALOG HOME](#)

Looking for a specific language? Don't see the assessment you're looking for? We can help. Get in touch to discuss →

Job Function

Assessments

● CCAT Assessments

Job Function	Assessments
Software	1. Adobe Acrobat 7.0 Standard
	2. Adobe Acrobat 8.0 Standard
	3. Adobe Acrobat 9.0 Standard
	4. Adobe Acrobat X
	5. Adobe Acrobat XI
	6. Adobe Dreamweaver - Creative Cloud
	7. Adobe Flash CS3 Professional
	8. Adobe Flash Professional CS5
	9. Adobe Flex 3
	10. Adobe Illustrator - Creative Cloud
	11. Adobe Illustrator CS
	12. Adobe Illustrator CS2
	13. Adobe Illustrator CS3
	14. Adobe Illustrator CS4
	15. Adobe Illustrator CS5
	16. Adobe InDesign - Creative Cloud
	17. Adobe InDesign CS
	18. Adobe InDesign CS2
	19. Adobe InDesign CS3
	20. Adobe InDesign CS4
	21. Adobe InDesign CS5
	22. Adobe InDesign CS6
	23. Adobe PageMaker 7
	24. Adobe Photoshop - Creative Cloud
	25. Adobe Photoshop CS
	26. Adobe Photoshop CS2
	27. Adobe Photoshop CS3
	28. Adobe Photoshop CS4
	29. Adobe Photoshop CS5
	30. Adobe Photoshop CS6
	31. Corel WordPerfect X6
	32. Commercial Cyber Aptitude Test (CCAT)
	33. Commercial Cyber Aptitude Test (CCAT) - Timed Version
	34. Desktop Publishing Theory Skills
	35. Dutch Microsoft Excel 2013 - Normal User
	36. Dutch Microsoft Excel 2013 - Power User
	37. Dutch Microsoft Excel 2013 - Whole Test
	38. Dutch Microsoft Word 2013 - Normal User
	39. Dutch Microsoft Word 2013 - Power User
	40. Dutch Microsoft Word 2013 - Whole Test
	41. FileMaker Pro 6
	42. French Canadian Microsoft Access 2007
	43. French Canadian Microsoft Access 2010
	44. French Canadian Microsoft Access 2010 [Timed]
	45. French Canadian Microsoft Access 2013
	46. French Canadian Microsoft Access 2013 [Timed]
	47. French Canadian Microsoft Excel 2007 - Normal User
	48. French Canadian Microsoft Excel 2007 - Power User
	49. French Canadian Microsoft Excel 2007 - Whole Test
	50. French Canadian Microsoft Excel 2010 - Normal User [Timed]
	51. French Canadian Microsoft Excel 2010 - Power User [Timed]
	52. French Canadian Microsoft Excel 2010 - Whole Test
	53. French Canadian Microsoft Excel 2010 - Whole Test [Timed]
	54. French Canadian Microsoft Excel 2013 - Normal User
	55. French Canadian Microsoft Excel 2013 - Normal User [Timed]
	56. French Canadian Microsoft Excel 2013 - Power User
	57. French Canadian Microsoft Excel 2013 - Power User [Timed]
	58. French Canadian Microsoft Excel 2013 - Whole Test
	59. French Canadian Microsoft Excel 2013 - Whole Test [Timed]
	60. French Canadian Microsoft Excel 2016 - Normal User
	61. French Canadian Microsoft Excel 2016 - Normal User [Timed]
	62. French Canadian Microsoft Excel 2016 - Power User
	63. French Canadian Microsoft Excel 2016 - Power User [Timed]

[BACK TO CATALOG HOME](#)

Looking for a specific language? Don't see the assessment you're looking for? We can help. Get in touch to discuss →

Job Function

Assessments

Job Function	Assessments	
Software, cont'd	64. French Canadian Microsoft Excel 2016 - Whole Test	87. French Canadian Microsoft Word 2007 - Power User
	65. French Canadian Microsoft Excel 2016 - Whole Test [Timed]	88. French Canadian Microsoft Word 2007 - Whole Test
	66. French Canadian Microsoft Outlook 2007	89. French Canadian Microsoft Word 2010 - Normal User
	67. French Canadian Microsoft Outlook 2010	90. French Canadian Microsoft Word 2010 - Normal User [Timed]
	68. French Canadian Microsoft Outlook 2010 [Timed]	91. French Canadian Microsoft Word 2010 - Power User
	69. French Canadian Microsoft Outlook 2013	92. French Canadian Microsoft Word 2010 - Power User [Timed]
	70. French Canadian Microsoft Outlook 2013 [Timed]	93. French Canadian Microsoft Word 2010 - Whole Test
	71. French Canadian Microsoft PowerPoint 2007 - Normal User	94. French Canadian Microsoft Word 2010 - Whole Test [Timed]
	72. French Canadian Microsoft PowerPoint 2007 - Power User	95. French Canadian Microsoft Word 2013 - Normal User
	73. French Canadian Microsoft PowerPoint 2007 - Whole Test	96. French Canadian Microsoft Word 2013 - Normal User [Timed]
	74. French Canadian Microsoft PowerPoint 2010 - Normal User	97. French Canadian Microsoft Word 2013 - Power User
	75. French Canadian Microsoft PowerPoint 2010 - Normal User [Timed]	98. French Canadian Microsoft Word 2013 - Power User [Timed]
	76. French Canadian Microsoft PowerPoint 2010 - Power User	99. French Canadian Microsoft Word 2013 - Whole Test
	77. French Canadian Microsoft PowerPoint 2010 - Power User [Timed]	100. French Canadian Microsoft Word 2013 - Whole Test [Timed]
	78. French Canadian Microsoft PowerPoint 2010 - Whole Test	101. French Canadian Microsoft Word 2016 - Normal User
	79. French Canadian Microsoft PowerPoint 2010 - Whole Test [Timed]	102. French Canadian Microsoft Word 2016 - Normal User [Timed]
	80. French Canadian Microsoft PowerPoint 2013 - Normal User	103. French Canadian Microsoft Word 2016 - Power User
	81. French Canadian Microsoft PowerPoint 2013 - Normal User [Timed]	104. French Canadian Microsoft Word 2016 - Power User [Timed]
	82. French Canadian Microsoft PowerPoint 2013 - Power User	105. French Canadian Microsoft Word 2016 - Whole Test
	83. French Canadian Microsoft PowerPoint 2013 - Power User [Timed]	106. French Canadian Microsoft Word 2016 - Whole Test [Timed]
	84. French Canadian Microsoft PowerPoint 2013 - Whole Test	107. French Microsoft Excel 2013 - Normal User
	85. French Canadian Microsoft PowerPoint 2013 - Whole Test [Timed]	108. French Microsoft Excel 2013 - Power User
	86. French Canadian Microsoft Word 2007 - Normal User	109. French Microsoft Excel 2013 - Whole Test
		110. French Microsoft Word 2013 - Normal User

[BACK TO CATALOG HOME](#)

Looking for a specific language? Don't see the assessment you're looking for? We can help. Get in touch to discuss →

Job Function

Assessments

Job Function	Assessments
Software, cont'd	111. French Microsoft Word 2013 - Power User
	112. French Microsoft Word 2013 - Whole Test
	113. German Microsoft Excel 2013 - Normal User
	114. German Microsoft Excel 2013 - Power User
	115. German Microsoft Excel 2013 - Whole Test
	116. German Microsoft Word 2013 - Normal User
	117. German Microsoft Word 2013 - Power User
	118. German Microsoft Word 2013 - Whole Test
	119. Italian Microsoft Excel 2013 - Normal User
	120. Italian Microsoft Excel 2013 - Power User
	121. Italian Microsoft Excel 2013 - Whole Test
	122. Legal MacPac 2000
	123. Lotus Notes 4.5 for Users
	124. Lotus Notes 5.0 for Users
	125. Lotus Notes 6.5 for Users
	126. Lotus Notes 8.5 for Users
	127. Macintosh Basics OS 9
	128. Medisoft
	129. Microsoft Access 2007
	130. Microsoft Access 2010
	131. Microsoft Access 2010 [Timed]
	132. Microsoft Access 2013
	133. Microsoft Access 2013 [Timed]
	134. Microsoft Access 2013 Tutorial
	135. Microsoft Access 2016
	136. Microsoft Access 2016 [Timed]
	137. Microsoft Access 2016 Tutorial
	138. Microsoft Excel 2003 - Normal User
	139. Microsoft Excel 2003 - Power User
	140. Microsoft Excel 2003 - Whole Test
	141. Microsoft Excel 2007 - Normal User
	142. Microsoft Excel 2007 - Power User
	143. Microsoft Excel 2007 - Whole Test
	144. Microsoft Excel 2010 - Normal User
	145. Microsoft Excel 2010 - Normal User [Timed]
	146. Microsoft Excel 2010 - Power User
	147. Microsoft Excel 2010 - Power User [Timed]
	148. Microsoft Excel 2010 - Whole Test
	149. Microsoft Excel 2010 - Whole Test [Timed]
	150. Microsoft Excel 2010 - Francais Du Canada - Utilisateur Standard
	151. Microsoft Excel 2010 - Français Du Canada - Utilisateur Chevronné
	152. Microsoft Excel 2013 - Normal User
	153. Microsoft Excel 2013 - Normal User [Timed]
	154. Microsoft Excel 2013 - Power User
	155. Microsoft Excel 2013 - Power User [Timed]
156. Microsoft Excel 2013 - Whole Test	
157. Microsoft Excel 2013 - Whole Test [Timed]	
158. Microsoft Excel 2013 Tutorial	
159. Microsoft Excel 2016 - Normal User	
160. Microsoft Excel 2016 - Normal User [Timed]	
161. Microsoft Excel 2016 - Power User	
162. Microsoft Excel 2016 - Power User [Timed]	
163. Microsoft Excel 2016 - Whole Test	
164. Microsoft Excel 2016 - Whole Test [Timed]	
165. Microsoft Excel 2016 Tutorial	
166. Microsoft FrontPage 2003	
167. Microsoft Internet Explorer 10.0	
168. Microsoft Internet Explorer 10.0 [Timed]	
169. Microsoft Internet Explorer 10.0 Tutorial	
170. Microsoft Outlook 2007	
171. Microsoft Outlook 2010	
172. Microsoft Outlook 2010 [Timed]	
173. Microsoft Outlook 2013	
174. Microsoft Outlook 2013 [Timed]	
175. Microsoft Outlook 2013 Tutorial	
176. Microsoft Outlook 2016	
177. Microsoft Outlook 2016 [Timed]	
178. Microsoft Outlook 2016 Tutorial	
179. Microsoft PowerPoint 2007 - Normal User	

[BACK TO CATALOG HOME](#)

Looking for a specific language? Don't see the assessment you're looking for? We can help. Get in touch to discuss →

Job Function

Assessments

Job Function	Assessments
Software, cont'd	180. Microsoft PowerPoint 2007 - Power User
	181. Microsoft PowerPoint 2007 - Whole Test
	182. Microsoft PowerPoint 2010 - Normal User
	183. Microsoft PowerPoint 2010 - Normal User [Timed]
	184. Microsoft PowerPoint 2010 - Power User
	185. Microsoft PowerPoint 2010 - Power User [Timed]
	186. Microsoft PowerPoint 2010 - Whole Test
	187. Microsoft PowerPoint 2010 - Whole Test [Timed]
	188. Microsoft PowerPoint 2013 - Normal User
	189. Microsoft PowerPoint 2013 - Normal User [Timed]
	190. Microsoft PowerPoint 2013 - Power User
	191. Microsoft PowerPoint 2013 - Power User [Timed]
	192. Microsoft PowerPoint 2013 - Whole Test
	193. Microsoft PowerPoint 2013 - Whole Test [Timed]
	194. Microsoft PowerPoint 2013 Tutorial
	195. Microsoft PowerPoint 2016 - Normal User
	196. Microsoft PowerPoint 2016 - Normal User [Timed]
	197. Microsoft PowerPoint 2016 - Power User
	198. Microsoft PowerPoint 2016 - Power User [Timed]
	199. Microsoft PowerPoint 2016 - Whole Test
	200. Microsoft PowerPoint 2016 - Whole Test [Timed]
	201. Microsoft PowerPoint 2016 Tutorial
	202. Microsoft Project 2000
	203. Microsoft Project 2003
	204. Microsoft Project 2007
	205. Microsoft Project 2010 Professional
	206. Microsoft Project 2013
	207. Microsoft Publisher 2002
	208. Microsoft Publisher 2007
	209. Microsoft Publisher 2010
	210. Microsoft Publisher 2013
	211. Microsoft Windows 7
	212. Microsoft Windows 7 [Timed]
	213. Microsoft Windows 7 Tutorial
	214. Microsoft Windows XP
	215. Microsoft Word 2003 - Normal User
	216. Microsoft Word 2003 - Power User
	217. Microsoft Word 2003 - Whole Test
	218. Microsoft Word 2007 - Normal User
	219. Microsoft Word 2007 - Power User
	220. Microsoft Word 2007 - Whole Test
	221. Microsoft Word 2010 - Normal User
	222. Microsoft Word 2010 - Normal User [Timed]
	223. Microsoft Word 2010 - Power User
	224. Microsoft Word 2010 - Power User [Timed]
	225. Microsoft Word 2010 - Whole Test
	226. Microsoft Word 2010 - Whole Test [Timed]
227. Microsoft Word 2013 - Normal User	
228. Microsoft Word 2013 - Normal User [Timed]	
229. Microsoft Word 2013 - Power User	
230. Microsoft Word 2013 - Power User [Timed]	
231. Microsoft Word 2013 - Whole Test	
232. Microsoft Word 2013 - Whole Test [Timed]	
233. Microsoft Word 2013 Tutorial	
234. Microsoft Word 2016 - Normal User	
235. Microsoft Word 2016 - Normal User [Timed]	
236. Microsoft Word 2016 - Power User	
237. Microsoft Word 2016 - Power User [Timed]	
238. Microsoft Word 2016 - Whole Test	
239. Microsoft Word 2016 - Whole Test [Timed]	
240. Microsoft Word 2016 Tutorial	
241. Microsoft Word 2019 - Normal User	
242. Microsoft Word 2019 - Normal User [Timed]	
243. Microsoft Word 2019 - Power User	

[BACK TO CATALOG HOME](#)

Looking for a specific language? Don't see the assessment you're looking for? We can help. Get in touch to discuss →

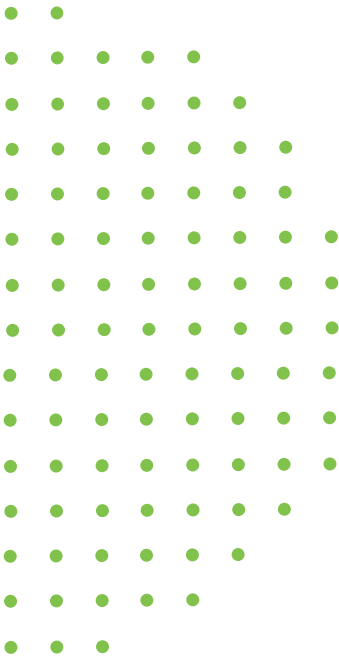
Job Function

Assessments

Job Function	Assessments	
Software, cont'd	244. Microsoft Word 2019 - Power User [Timed]	276. U.K. Microsoft Excel 2016 - Whole Test
	245. Microsoft Word 2019 - Whole Test	277. U.K. Microsoft Outlook 2007
	246. Microsoft Word 2019 - Whole Test [Timed]	278. U.K. Microsoft Outlook 2010
	247. QuarkXPress 5 Advanced	279. U.K. Microsoft Outlook 2013
	248. QuarkXPress 5 Basics	280. U.K. Microsoft Outlook 2016
	249. QuarkXPress 6	281. U.K. Microsoft PowerPoint 2007 - Normal User
	250. QuarkXPress 9	282. U.K. Microsoft PowerPoint 2007 - Power User
	251. Spanish Microsoft Excel 2010 - Normal User	283. U.K. Microsoft PowerPoint 2007 - Whole Test
	252. Spanish Microsoft Excel 2010 - Power User	284. U.K. Microsoft PowerPoint 2010 - Normal User
	253. Spanish Microsoft Excel 2010 - Whole Test	285. U.K. Microsoft PowerPoint 2010 - Power User
	254. Spanish Microsoft Outlook 2010	286. U.K. Microsoft PowerPoint 2010 - Whole Test
	255. Spanish Microsoft PowerPoint 2010 - Normal User	287. U.K. Microsoft PowerPoint 2013 - Normal User
	256. Spanish Microsoft PowerPoint 2010 - Power User	288. U.K. Microsoft PowerPoint 2013 - Power User
	257. Spanish Microsoft PowerPoint 2010 - Whole Test	289. U.K. Microsoft PowerPoint 2013 - Whole Test
	258. Spanish Microsoft Word 2010 - Normal User	290. U.K. Microsoft PowerPoint 2016 - Normal User
	259. Spanish Microsoft Word 2010 - Power User	291. U.K. Microsoft PowerPoint 2016 - Power User
	260. Spanish Microsoft Word 2010 - Whole Test	292. U.K. Microsoft PowerPoint 2016 - Whole Test
	261. Summation iBlaze 3.0	293. U.K. Microsoft Windows 7
	262. U.K. Microsoft Access 2007	294. U.K. Microsoft Word 2007 - Normal User
	263. U.K. Microsoft Access 2010	295. U.K. Microsoft Word 2007 - Power User
	264. U.K. Microsoft Access 2013	296. U.K. Microsoft Word 2007 - Whole Test
	265. U.K. Microsoft Excel 2007 - Normal User	297. U.K. Microsoft Word 2010 - Normal User
	266. U.K. Microsoft Excel 2007 - Power User	298. U.K. Microsoft Word 2010 - Power User
	267. U.K. Microsoft Excel 2007 - Whole Test	299. U.K. Microsoft Word 2010 - Whole Test
	268. U.K. Microsoft Excel 2010 - Normal User	300. U.K. Microsoft Word 2013 - Normal User
	269. U.K. Microsoft Excel 2010 - Power User	301. U.K. Microsoft Word 2013 - Power User
	270. U.K. Microsoft Excel 2010 - Whole Test	302. U.K. Microsoft Word 2013 - Whole Test
	271. U.K. Microsoft Excel 2013 - Normal User	303. U.K. Microsoft Word 2016 - Normal User
	272. U.K. Microsoft Excel 2013 - Power User	304. U.K. Microsoft Word 2016 - Power User
	273. U.K. Microsoft Excel 2013 - Whole Test	305. U.K. Microsoft Word 2016 - Whole Test
	274. U.K. Microsoft Excel 2016 - Normal User	
	275. U.K. Microsoft Excel 2016 - Power User	

[BACK TO CATALOG HOME](#)

Looking for a specific language? Don't see the assessment you're looking for? We can help. Get in touch to discuss →



© Copyright SHL and its affiliates

SHL Group Limited
The Pavilion
1 Atwell Place
Thames Ditton, Surrey KT7 ONE
United Kingdom

April 2020

SHL, the SHL logo, and shl.com are trademarks of SHL Group Limited, registered in many jurisdictions worldwide. Other product and service names might be trademarks of SHL or other companies.

Adobe is a registered trademark of Adobe Systems Incorporated in the United States and/or other countries.

Microsoft, Windows, and Windows NT are trademarks of Microsoft Corporation in the United States, other countries, or both.

This document is current as of the initial date of publication and may be changed by SHL at any time. Not all offerings are available in every country in which SHL operates.

THE INFORMATION IN THIS DOCUMENT IS PROVIDED "AS IS WITHOUT ANY WARRANTY, EXPRESS OR IMPLIED, INCLUDING WITHOUT ANY WARRANTIES OF MERCHANTABILITY, FITNESS FOR A PARTICULAR PURPOSE AND ANY WARRANTY OR CONDITION OF NON-INFRINGEMENT. SHL products are warranted according to the terms and conditions of the agreements under which they are provided. The client is responsible for ensuring compliance with laws and regulations applicable to it. SHL does not provide legal advice or represent or warrant that its services or products will ensure that the client is in compliance with any law or regulation



Please Recycle

Can we help you? 1-800-899-7451 (US) | 0330 100 3435 (UK) • info@SHL.com • SHL.com



© 2020 SHL and its affiliates. All rights reserved.