



THE
Walker Course
AT CLEMSON® UNIVERSITY

Upcoming Events

December

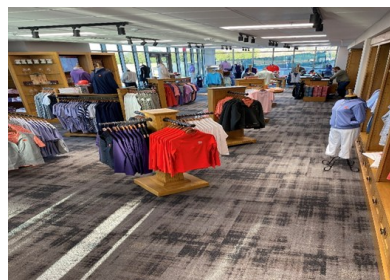
01	Closed Monday
08	Closed Monday
12-14	Golf Shop Christmas Sale
13	Annual Member's Meeting
13	Member's Tough Day Competition
15	Closed Monday
22	Closed Monday
24-25	Closed Christmas Holidays
26	Course Open
27	Upstate Amateur Tour Event (am)
29	Closed Monday
31	Course Open

January

01	Course Open: Holiday Rates Course & Shop Closed on Mondays
----	---

BRENT JESSUP

PGA HEAD GOLF PROFESSIONAL



Christmas Sale: December 12-14

This year will be our first sale in our newly expanded golf shop. We will have the largest selection of sale items ever for your Christmas shopping! As usual, we will continue our "discount balloons" and our "Double Discount Elf Putting" opportunities in addition to our sip and snacks while you shop. Come out and shop until your stocking is full!

Holiday Bowl Pool

Although it has been a season of unpredictability in college football this fall, we will again host our Holiday Bowl Contest for you to "try" and pick the winners of the bowl game season. Entry forms will be available in the golf shop and must be returned before the first bowl game kicks off. Last year's winner (**Mary Cate Garrett**) picked 28 winners from the 41 bowl games and took home a nice cash prize. Entry fee is only \$5 per entry. See if you can beat her record this year!

Annual Members Meeting: December 13

The annual Walker Course Membership meeting will be held in the **Madren Center BellSouth Auditorium** on Saturday, December 13th from 9am until 11am. **Don Garrett** and **Brent Jessup** will share their 2025 reports and talk about the plans for 2026. Coffee and pastries will be served prior to the meeting. Come out and hear what's going on, then play in the Tough Day event or go shopping in our new golf shop.

Tough Day Competition: December 13

Immediately following the conclusion of the annual membership meeting, we will host our annual Member's Tough Day competition with an 11:15am shotgun start. You **MUST** attend the annual meeting and sign up to play at the meeting. Following play, we will convene at **Solé on the Green** for sipping, snacking, and awards. Come join the fun!

Employee Appreciation Contributions

Continuing the tradition started by the WCMA in 2017, Walker Course member: **Steve Trojan** has again agreed to be the collection point man for contributions to the Employee Appreciation Fund. All funds collected are passed along to **Don Garrett** and **Brent Jessup** for distribution to their respective staff members as a thank you for a job well done.

Last year, more than \$5,700 was distributed to those employees. If you are so inclined, please submit your contribution to **Mr. Trojan** before December 14th. Checks need to be made payable to: **STEVE TROJAN**. He will also attend the annual membership meeting or you may also drop off your contribution at the golf shop in a sealed envelope. Contributions will be distributed to the staff the week of December 15th. Thank you in advance for your consideration and appreciation of our staff's hard work this past year!

Continued on pg. 2

Range Opening

The new practice range is scheduled to open on Tuesday, December 2nd with a *few restrictions* that must be followed. There is still ongoing work that will not be complete until Spring: range ball dispenser building and installation, netting along Old Stadium Road, fencing along the new retention pond on the left side, landscaping work, and signage.

As a “thank you for your patience” we will provide *complimentary range balls for all golfers from opening until 3pm Tuesday through Sunday until the ball dispenser is operational*. Since we are not yet able to use our range vehicles to retrieve balls, we will close the range each day at 3pm to manually hand pick the range before darkness.

We will be *hitting from the new astroturf tee mat* until the grass starts growing again in the Spring and *practice shots will be limited to 200 yards or less*. Our staff will be strictly enforcing these restrictions as violations will result in suspension from using the range until the Spring.

Range Club 2026

We do plan to offer a Walker Course Members Range Club membership (for an additional fee) later this year once the ball dispenser is operational. Details and rates will be shared in our future monthly newsletter at that time. Stay tuned!

Winter Hours

Now that December has arrived, cold mornings and frost delays are inevitable, we will observe our winter operation hours through the end of March. The golf shop will open at 8:30am and close at 5:00pm. The first tee time each morning is scheduled for 9:00am (barring frost delays). The golf course and range are closed on Mondays until April. Enjoy the cooler days by sleeping later before coming out to play or practice.

Holiday Closing

The Walker Course will be closed Wednesday and Thursday, December 24/25 for Christmas holidays. We will re-open on Friday, December 26th. We will be OPEN on Thursday, January 1, 2026. Holiday rates will apply.



TWO ACES in Five Days!

Double congratulations to *Alyson Dildine* for her banner week last month as she scored TWO holes-in-one within five days of each. On Sunday, November 16th she aced hole 17 and on the following Friday (November 21), she aced hole 4 with the same club: PXG pitching wedge. Witnessing the first ace were: *Bill Dildine*, *Bob Barker*, and *Nancy Barker*. Witnessing the second ace was *Cherryl Meadows*.

Mrs. Dildine was a member of the Member's Hole-In-One Club for both aces and collected the jackpots of \$240 and \$145. That makes it time for everyone to re-join the club for the next jackpot!

2026 GHIN Handicap Renewals

January marks time for your annual renewal of your USGA-GHIN handicap services. If you are currently on the GHIN service roster, you do not need to do anything to renew for 2026. We will bill you in February for the annual fee (TBA). If you no longer want to use the GHIN service you must notify the golf shop staff no later than January 25th. Refunds are not available after that date.

November Status

What a difference a year makes. Last November was very warm and with no killing frost, the course stayed green far longer than it ever has. This year we have had a more traditional month weather wise, and we have been mostly dormant all month. A few hard frosts in early December and the Bermudagrass should enter full dormancy.

We have battled falling leaves all month as is the norm for this time of year. I know some days it appears we made no effort to clean the off, but I promise we have. Some days they just fall faster than we can clean them up. It looks like most trees are bare now, except for the water oaks which will continue to drop leaves throughout December.

We were able to get all our winter weed control sprayed earlier this month, so we are looking forward to a clean winter from a weed standpoint.

The overseeding on the tees on holes 4 & 12 has come in well. In addition, we did some "liquid overseeding" to the tees on 17. The tee tops have been painted to add some color to our signature hole since we left these tees dormant to allow us to clean up the weed infestation from poa annua that I mentioned last month.

We went to our 3-cup model on the greens a week earlier this year, cutting 3 cups into each green the final week of the month. This assisted with managing our workload during the Thanksgiving holiday while our student staff were on break.

A new sand storage box has been added at the 1st tee. This will allow those of you who walk and are kind enough to carry your own sand bottle to fill it before your round. In addition, it will provide a place to refill on days that we start on 10.

December Goals

In addition to battling the remainder of the falling leaves, we will move into project mode this month and next. Tree work is at the top of the list. After 30 years of growth, some trees are presenting real challenges when it comes to growing high quality turf. Bunker repairs, drainage basin repair, and irrigation work are also on our list.

Please be aware that at some point during December or January, we will be making a crucial irrigation upgrade near the 1st tee. The pipe leaving the pump station needs to be enlarged. This will allow us to 1) take full advantage of the lines feeding the back 9 that we upsized when they had to be relocated due to the parking project and 2) to allow better efficiency in irrigating the driving range, which now has over 120 heads versus 45 on the old range. This work should take about a week and may require either a closure of the front nine or possibly playing #1 as a par 3.

Water Coolers

The water coolers have been removed from the golf course, not just for the winter months but permanently. With food service no longer willing to clean and fill them, and with as many as 6 different water supplies on or near the course (Bistro, Halfway House, Beverage Cart, bottles of water provided in the on cart coolers, and water fountains at 4 & 14 restroom) we have decided to eliminate these coolers and the sanitation risk that comes with them. We waited to do so until the cooler months to allow you time to adjust before things warm up again.

Range Project

The last load of the sod was laid on Friday November 14th. The parking lot contractor finished work on the retention pond the last week of the month. Now all that remains is lining up contractors to finish fencing, netting, and landscaping work on the rear perimeter of the range. This work will take place over the winter months.

In the meantime, I am happy that we can open the range on December 2nd, utilizing the mat and limiting distance to 200 yards.

The hitting net will remain in place on #10 in case we need to temporarily close the range to finish the remaining work.

Year in Review

I am looking forward to seeing many of you at the Membership meeting on December 13th. Once again, I will be presenting the year in review from the maintenance standpoint, along with updates for 2026.

**The maintenance staff and I would like to thank you for all your support in 2025.
We wish you all a Merry Christmas, a Happy New Year, and a great 2026!**

FOR YOUR INFORMATION

**Pro-Shop
Operating Hours:**

Monday
(Seasonal)
Tuesday—Sunday
7:30 am—7:00 pm

Practice Range Hours:

Monday
12:00 pm—6:45 pm
Tuesday—Sunday
7:45 am—6:45 pm
(Weather Permitting)

Brent Jessup

Head Golf Professional
656-7516

Don Garrett

Course Superintendent
656-1814

Azenda Thompson

Accounting
656-0595

Golf Pro-Shop

656-0236

Club House Grill

656-7518

Sole On The Green

656-7444

The Martin Inn

654-9020

The Madren Center

656-7155

Membership by the Numbers

Individuals: 190
Family: 95 Life: 26
Non-Resident: 92
Young Alumni: 38
Inactive: 4 Legacy Life: 14
Total Membership: 459

New Members

Chad & Kim Goforth

Bob Keasler

Craig Williams

Member Resignations

Lance & Carrie Fesperman

Hugh Osburn

Frank Baughman

Karen & Tom McCauley

Steve Vierra

December 2025

Sunday	Monday	Tuesday	Wednesday	Thursday	Friday	Saturday
	1 Closed Monday	2	3	4	5	6
7	8 Closed Monday	9	10	11	12 Golf Shop Christmas Sale	13 Golf Shop Christmas Sale Annual Member's Meeting Member's Tough Day Competition
14 Golf Shop Christmas Sale	15 Closed Monday	16	17	18	19	20
21	22 Closed Monday	23	24 Closed Christmas Holidays	25 Closed Christmas Holidays	26 Course Open	27 Upstate Amateur Tour Event (am)
28	29 Closed Monday	30	31 Course Open			