

CLEMSON UNIVERSITY'S

WOODLAND CEMETERY

PRESERVATION & DEVELOPMENT PLAN



A SUMMARY OF THE HISTORY, PRESENT STATUS, & FUTURE
DEVELOPMENT GOALS

OCTOBER, 2003

THE WOODLAND CEMETERY PRESERVATION & DEVELOPMENT PLAN



*“Show me your cemeteries, and I will tell
you what kind of people you have.”
Benjamin Franklin
(1706-1790)*

Over the years, Clemson has developed a rich history that has shaped its present image. The University has an abundance of historic resources that provide a connection to people, places, and events in Clemson’s past. “Preservation of the resources is a physical covenant that reinforces the educational covenant stated by Thomas Green Clemson in his will that Clemson should be ‘a high seminary for learning.’”¹ Cemetery Hill is one of many historic resources that contribute to Clemson’s culture and heritage and is essential in shaping the University’s sense of place, while furthering the educational mission of the University.

The purpose of the following plan is to outline a course of action for (1) preservation and restoration of existing cemetery land, and (2) development and expansion opportunities within the existing land area.

¹ Remark by James F. Barker, AIA, Dean of the College of Architecture, Arts, and Humanities at the Seminar on Campus Preservation and Clemson Historic Resources, Clemson House, March 31, 1995.

TABLE OF CONTENTS



Section 1

Program Summary

Facts / Goals / Concepts pg. 5

Section 2

A History

Background Information pg. 7

Section 3

Site Inventory & Analysis

An Inventory of Existing Conditions pg. 14

Section 4

Future Development Opportunities

Proposed Program of Future Use pg. 21

TABLE OF ILLUSTRATIONS

Section 1

Program Summary

Section 2

A History

Calhoun Plot	p.8
Cemetery's Woodland Setting	p.9
1963 Map of Cemetery	p.10
Sign Exhibiting 1991 Archaeology Site Study	p.11
Deteriorating Foundation	p.11
Retaining Wall	p.11
Potential Head and Foot Stones	p.12
View of Stadium	p.13



Section 3

Site Inventory & Analysis

Cemetery Site Location	p.15
Existing Land Use Plan	p.16
Site Analysis	p.17
Vegetative Character	p.18
Coping under Large Oak	p.19
Existing Cross-tie Retaining Wall	p.19
Headstone Replaced After Theft	p.19
Cemetery Plot Status	p.20

Section 4

Future Development Opportunities

Proposed Land Use Plan	p.22
Proposed Circulation Concept	p.23
Proposed Future Development Plan	p.24

PROGRAM SUMMARY

FACTS, GOALS, CONCEPTS

section

1



PROGRAM SUMMARY: FACTS, GOALS, AND CONCEPTS

In July of 1997, the Cemetery Hill Development and Expansion Proposal was developed in an effort to respond to the growing demand for unassigned plots as well as to point to immediate maintenance and preservation needs. Though the proposal was not adopted in its entirety, some maintenance and preservation issues identified in the plan have been addressed.

This most current revision has been published in recognition of the continuing mission to preserve and protect one of Clemson University's valuable historic landscapes. This plan presents research and ideas informed in part by the Plan and Guidelines for Restoration, Rehabilitation, and Maintenance of Historic Resources and through a collaborative effort of University staff and the Woodland Stewardship Committee. The shared intentions of that program and this plan are to "preserve and protect the landscapes and objects that reflect the architectural and cultural heritage of Clemson University as a part of the living fabric of the campus."

The goal of the Woodland Cemetery Preservation and Development Plan is to promote the Woodland Cemetery as a unique historical asset to the Clemson campus. The following is a list of objectives that the preservation and development plan seeks to accomplish:

- to preserve the historical integrity and character of the Woodland Cemetery and its immediate surroundings.

- to prescribe a course of development that allows for future cemetery expansion while enhancing the historical significance of the site.



A HISTORY

BACKGROUND INFORMATION

section

2

HISTORY: BACKGROUND INFORMATION

Clemson has developed a rich past that has shaped its present image. This rich past can be discovered through historic resources that provide a connection to people, places, and events. Clemson University's Woodland Cemetery is significant in this aspect. No other place on campus holds such a unique link to the people who helped shape the values, culture, and tradition we now enjoy. The following text briefly reports the cemetery's origin and events that helped to shape its existing character.

An excerpt from a memo to Mr. Melford A. Wilson from Henry H. Hill in December of 1957:



“The origin of Woodland Cemetery probably dates back to the year 1837. In this year it seems that Andrew Pickens Calhoun and his family resided at the mansion with his father, John C. Calhoun. Records indicate that the first child of Andrew Pickens Calhoun, John Caldwell Calhoun, died December 7, 1837, and it is believed that this child was the first ...person buried in the area.

As other members of the Andrew Calhoun family died they were buried near the child's grave. Sometime after the turn of the twentieth century, descendants of Andrew had the Calhoun graves enclosed by a large iron fence measuring approximately 70 feet in width and 68 feet in length.

Approximately 100 yards to the west of the Calhoun plot is a burial ground reportedly established for slaves. This probably was done by J.C. Calhoun prior to 1837. A number of rough stone markers can today be located in this area, but it

is impossible to determine the number of graves. In addition to the slaves reportedly buried here, a number of convicts who died while working on the first college buildings are buried in this area.



The college Board of Trustees, at a meeting on July 4 and 5, 1922, received a request from President W. M. Riggs to establish a faculty cemetery. This request was approved and Dr. Riggs was asked to submit plans to establishing the cemetery. Shortly after this meeting Dr. Riggs died and the Acting President, Dean S. B. Earle, submitted to the Trustees, on July 10, 1924, the following report which was prepared by the Cemetery Committee:

“1. We recommend that this cemetery be named ‘Woodland Cemetery’.”

“2. We recommend that the privileges of this cemetery be extended to the faculty and officers of the college as a last resting place for themselves and their immediate families. We recommend, further, that these privileges be extended to families of former members of the faculty and college officers who have died in the service of the college, provided the families concerned desire to remove the remains of such faculty members or officers to this cemetery.”

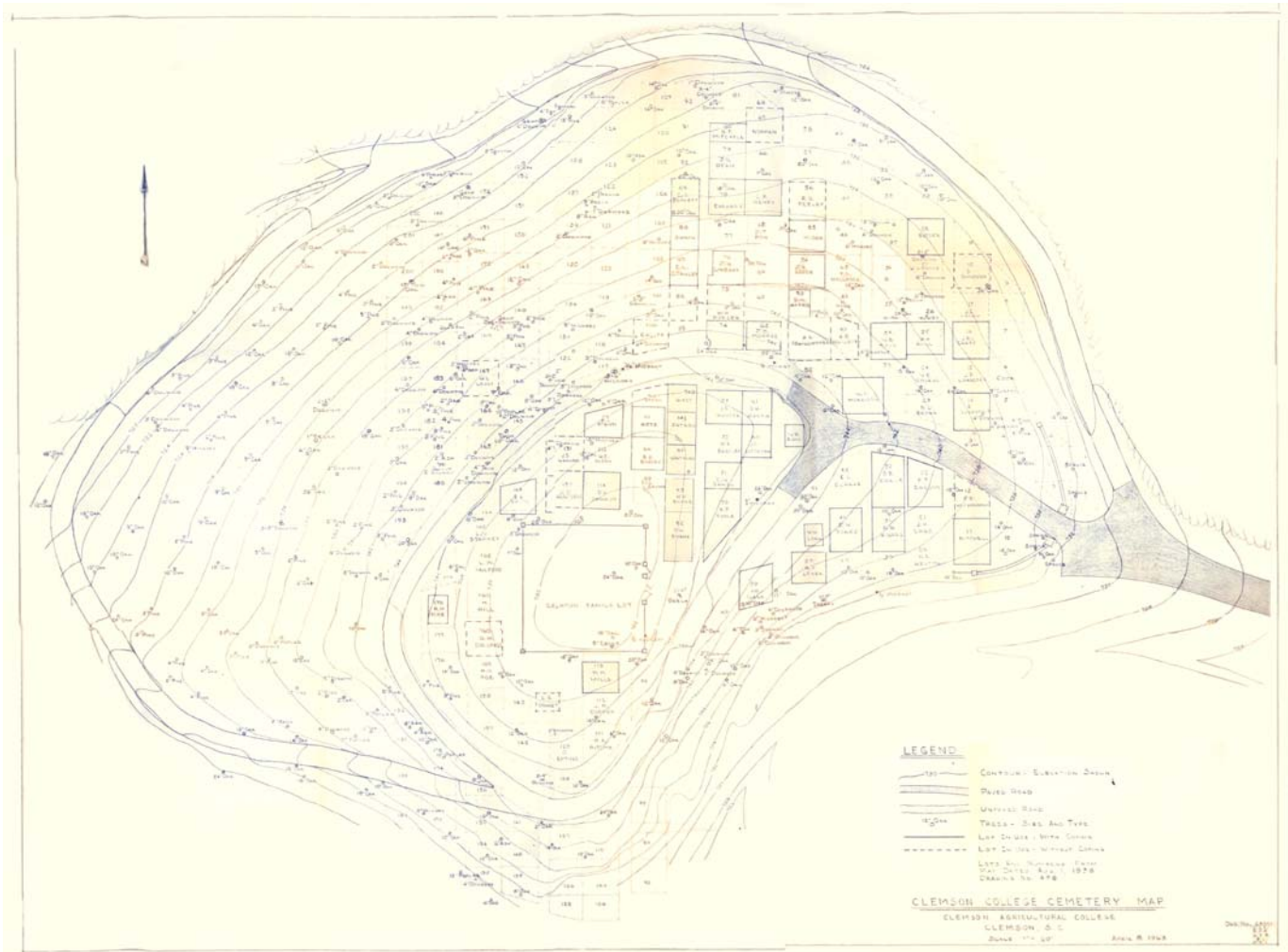
“3. We recommend that the Board of Trustees appoint a committee from the faculty whose duty it shall be to assign lots in this cemetery as they are applied for.”

“4. We recommend that the height of the monuments in the cemetery shall be limited to six feet.”

“Moved by Mr. Wannamaker: That the recommendation be approved.”

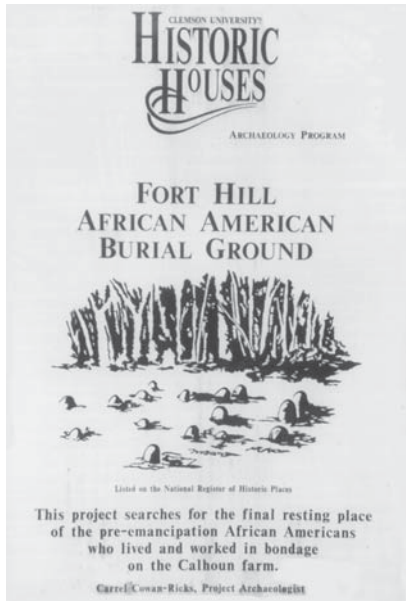
“Motion adopted.””

Dr. Earle states that the name “Woodland” was selected as it was the desire of the Committee that the cemetery be located and maintained in a wooded area and that it was not to be like any of those that are placed under perpetual care. Major S. M. Martin, who was appointed by Dr. Riggs as chairman of the Cemetery Committee, states that he prepared a map of the area and outlined a number of plots and that this Committee made the assignment of all plots until about 1938. Probably due to the need for additional space, the area was enlarged and Professor H. E. Glenn in 1938 surveyed the cemetery and prepared a map containing 202 plots. This map, with the record of all assignments, was then placed in the Business Manager’s office and since that time, the assignments and records have been maintained by this office. In 1954 a Woodland Cemetery Lot Certificate was prepared, the original copy being kept on file in the Business Manager’s office and the assignee given the duplicate.



1963 Map of Clemson College Cemetery

In November 1957, a committee was appointed to make a study of the Woodland Cemetery policies and to make recommendations to the Comptroller for the cemetery’s future operation. As of December 1957, 104 plots had been assigned, leaving 98 not assigned. A number of these plots cannot be used because of the contour of the land.



Sign exhibited during 1991 Archaeology site study



Deteriorating foundation at Calhoun family plot before repair



New retaining wall installed in 2000

Most Recently...

In 1991, a newly appointed archaeology professor, Carrel Cowen-Ricks, conducted a search for possible unmarked slave graves within the cemetery which were said to have been established prior to 1837. The search lasted for three months and was disbanded with no reported findings.

Since that time, the number of assigned plots has continued to increase to 306, with 36 individuals on a waiting list.

Issue 1: Sixty-eight (68) Unassigned plots are located within the area investigated by Dr. Cowen-Ricks. Before any plots are assigned in this area, further investigation and final conclusions should be made to ensure potential unmarked burial grounds are not desecrated. (Refer to p. 17 Present Cemetery Plot Status)

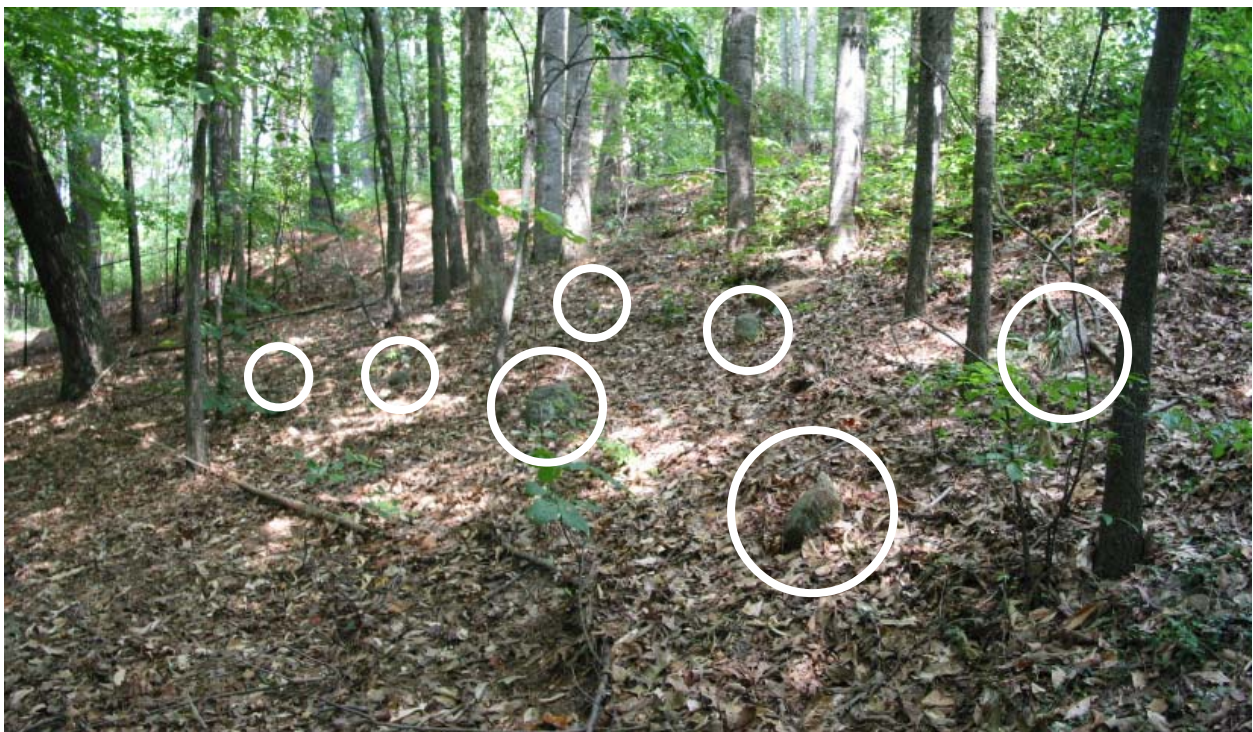
Issue 2: The University Landscape Services Department currently maintains the cemetery as labor is available. However, with an increasing number of new plots, maintenance needs will continue to grow.

1997 Cemetery Hill MP Follow-Up Report

The 1997 Cemetery Hill Development and Expansion Proposal identified preservation issues of which some have since been addressed. In the fall of 1999, Maintenance, Repair and Renovation funding was made available to address erosion problems directly adjacent to the Calhoun family plot. A new foundation (pictured left) was constructed for the southeast corner pier where the previous was subject to collapse. A granite retention wall was also built to mitigate steep slopes in the same area.

In December 2000, President James F. Barker drafted a memo calling for the establishment of a committee to assist and support in the stewardship of the Woodland Cemetery. Hence, the Woodland Cemetery Stewardship Committee was formed.

Since the formation of that committee, other actions have been taken to address needs within the cemetery. In the spring of 2002, protection fencing was placed around an area thought to contain unmarked burial sites. The distinctly patterned arrangement of field stones stood on end raise questions of potential undocumented burial plots in the area (see diagram on p.17 and 22).



Circles highlight field stones standing on end in a deliberate pattern oriented east and west as head and foot stones.

Issue 3: To date, investigations are inconclusive and cannot validate the presence of unmarked burial plots in this area. As time has passed, suspected “head and foot stone markers” have become less detectable. A timely and conclusive investigation of this site remains a standing need.



Views of Memorial Stadium from within the cemetery

Additionally, in an effort to maintain the woodland character of the cemetery, limited tree plantings were carried out in key locations. In the 1997 study, as in this report, the dominating presence of the stadium has been identified as a potential threat to the quality and mood of the cemetery environment. In response to this, an ever-green buffer planting has since been established (see p. 17 for additional site analysis information).

SITE INVENTORY & ANALYSIS
AN INVENTORY OF EXISTING CONDITIONS

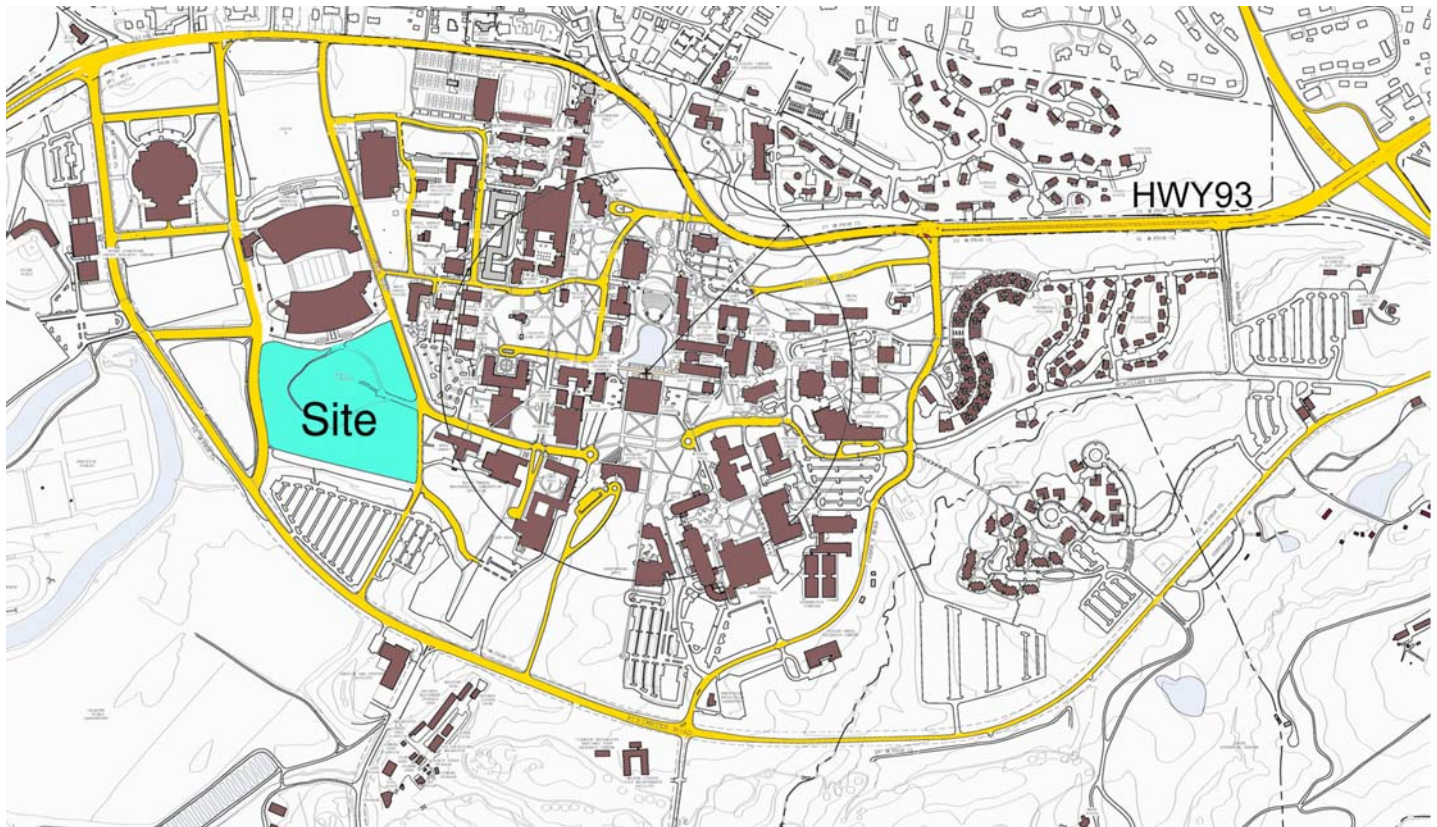
section
3



The Analysis:

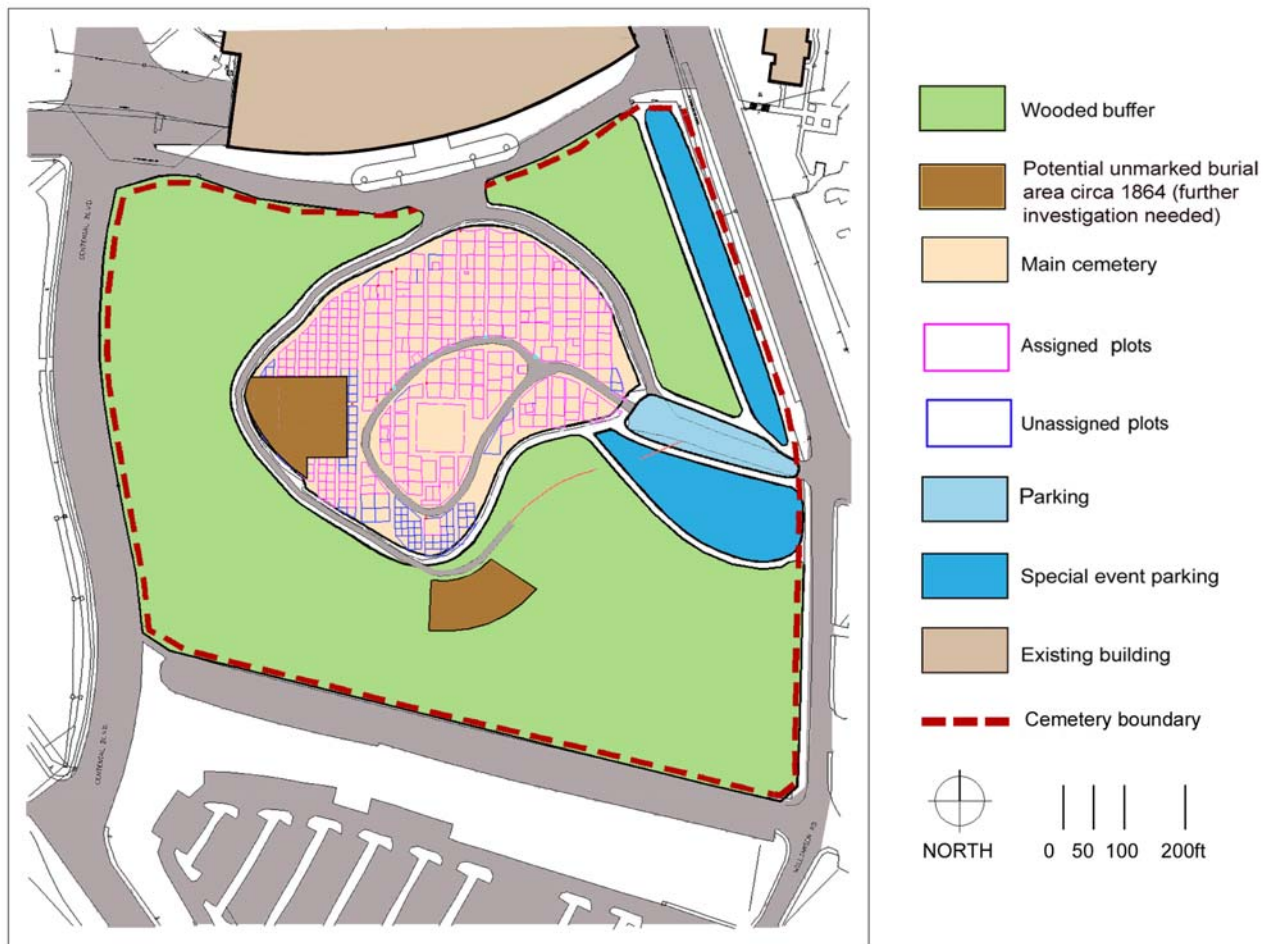
EXISTING CONDITIONS

Woodland Cemetery is located in a highly visible area adjacent to the Memorial Stadium on the west side of Clemson University. Due to seasonal campus activities, many visitors, staff, and students use the site. The cemetery's location is ideal for presenting the university's history while providing quality outdoor spaces for events and activities. The continued development of Woodland Cemetery must be dedicated to preserving the unique character of this historic resource while providing functional and educational outdoor spaces for later generations.



Land Use and Spatial Adjacency

The site is composed of approximately 17.3 acres of which approximately 12.6 acres are amenable to development. Existing assigned plots occupy approximately 3.2 acres of this portion of the site. Some areas of the site are suspected to contain unmarked burial plots. Though the extent of these unmarked plots is undetermined, it is suspected that the total area makes up approximately .6 acres of the site. The cemetery is bounded on the north by the memorial stadium and northward views through the site are dominated by its presence. Other immediate boundaries include: Centennial Boulevard along the west side, Williamson Road along the east side, and C-3 parking area along the south side. The entire site is classified in the Long Range Master Plan as “dedicated open space.”



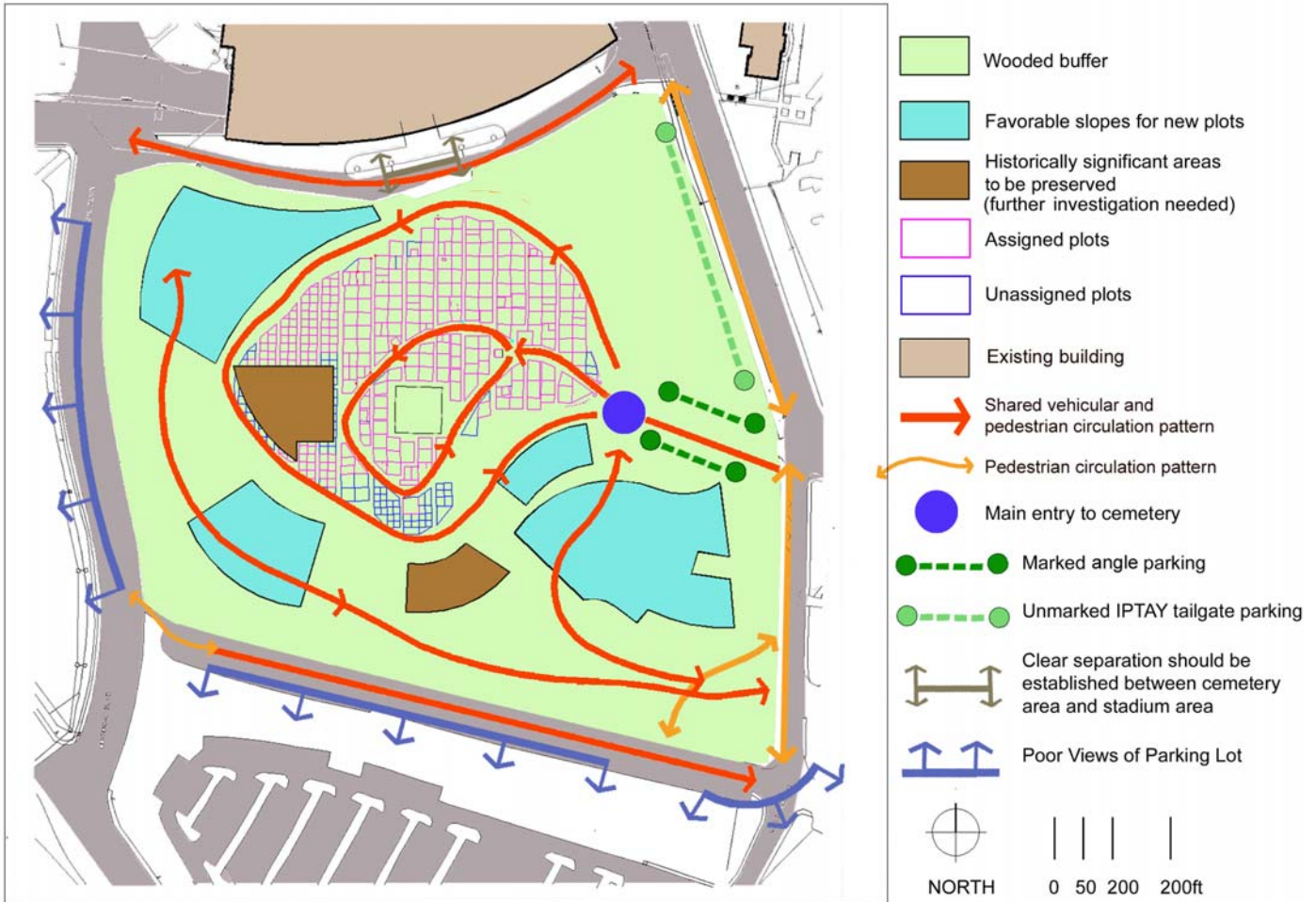
Existing Land Use Plan

Slope Conditions

Severe slopes inhibit development of many areas on the site. Approximately 4.7 acres is unsuitable for the establishment of new plots. Erosion problems persist along Williamson Road creating unsafe conditions for pedestrians.

Circulation and Parking

Vehicular circulation is one-way through the site. Roads are generally poor and in need of repair. There are no sidewalks on the site. Consistent patterns of pedestrian circulation can be seen by worn paths through open areas on the site. There are approximately 14 visitor parking spaces and 26 employee parking spaces at the entrance of the site.



Site Analysis

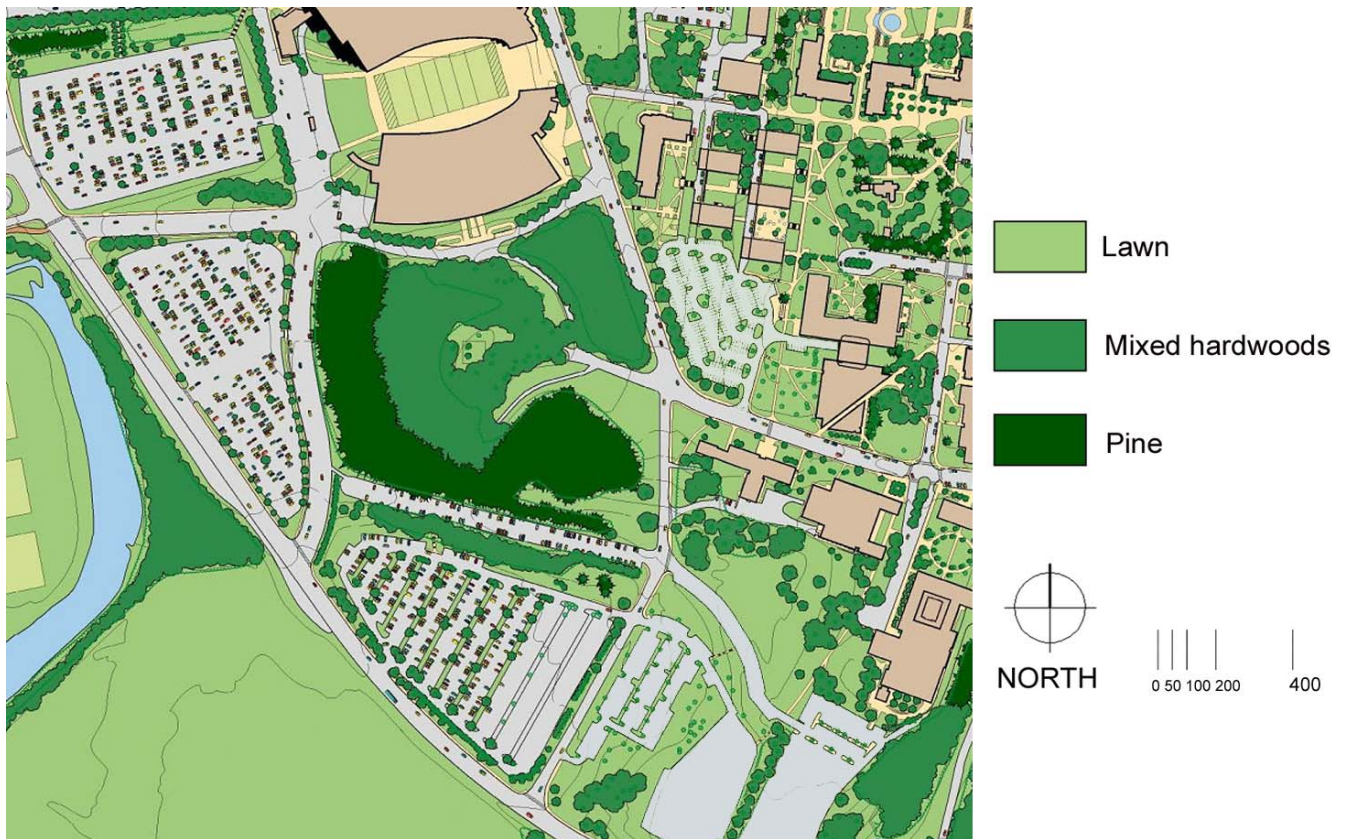
Issue 4: Roads throughout the site are hazardous for both autos and pedestrians and should be repaved.

Issue 5: Parking on the site is not clearly delineated and is in poor condition. Parking conditions on the site do not meet campus standards of quality for public parking facilities.

Issue 6: Site lighting does not currently exist within the cemetery. Considering the somewhat remote location of the area, site lighting should be considered in limited locations. Campus safety is an ongoing concern. Increasing public awareness of the cemetery and its history will bring both visitors and unwanted vandalism. Site lighting will become an increasing need as safety and site security needs increase.

Vegetative Character

Many different elements come together to create the unique atmosphere within the cemetery. Perhaps the most significant element would be the large stately trees. A dense canopy floats above the cemetery, with branches arching up and over large distances. Large trunks and buttress roots grow in and among plots in a random fashion that provides a beautiful balance among the regular grid of monuments. This is the overwhelming character that surely inspired the name “Woodland Cemetery.”



Vegetative Diagram: Excerpt from the 2002 Long Range Master Plan

Issue 7: Although the center and main portion of the cemetery is composed of hardwoods, most of the site is a Loblolly pine forest. Pine beetle damage has been reported in the cemetery. The longevity of the pine forest is questionable. The pine forest plays a critical role in providing the separation and seclusion needed to support the mood of the cemetery.



Recent coping installation under 36" Red Oak

It is always a challenge to protect large established trees when excavating earth near or within the drip-line. Excavation is necessary and unavoidable within the context of a cemetery. However, certain measures should be taken to lessen the impact of excavation where possible.

Issue 8: A potential threat to the trees within the main cemetery area comes from the installation of coping around individual grave plots. Although coping is considered a standard practice, the excavation required to install coping severs both structural and feeder roots critical to the survival of established trees. The effects of such excavation may only be detected years after the initial damage is done.



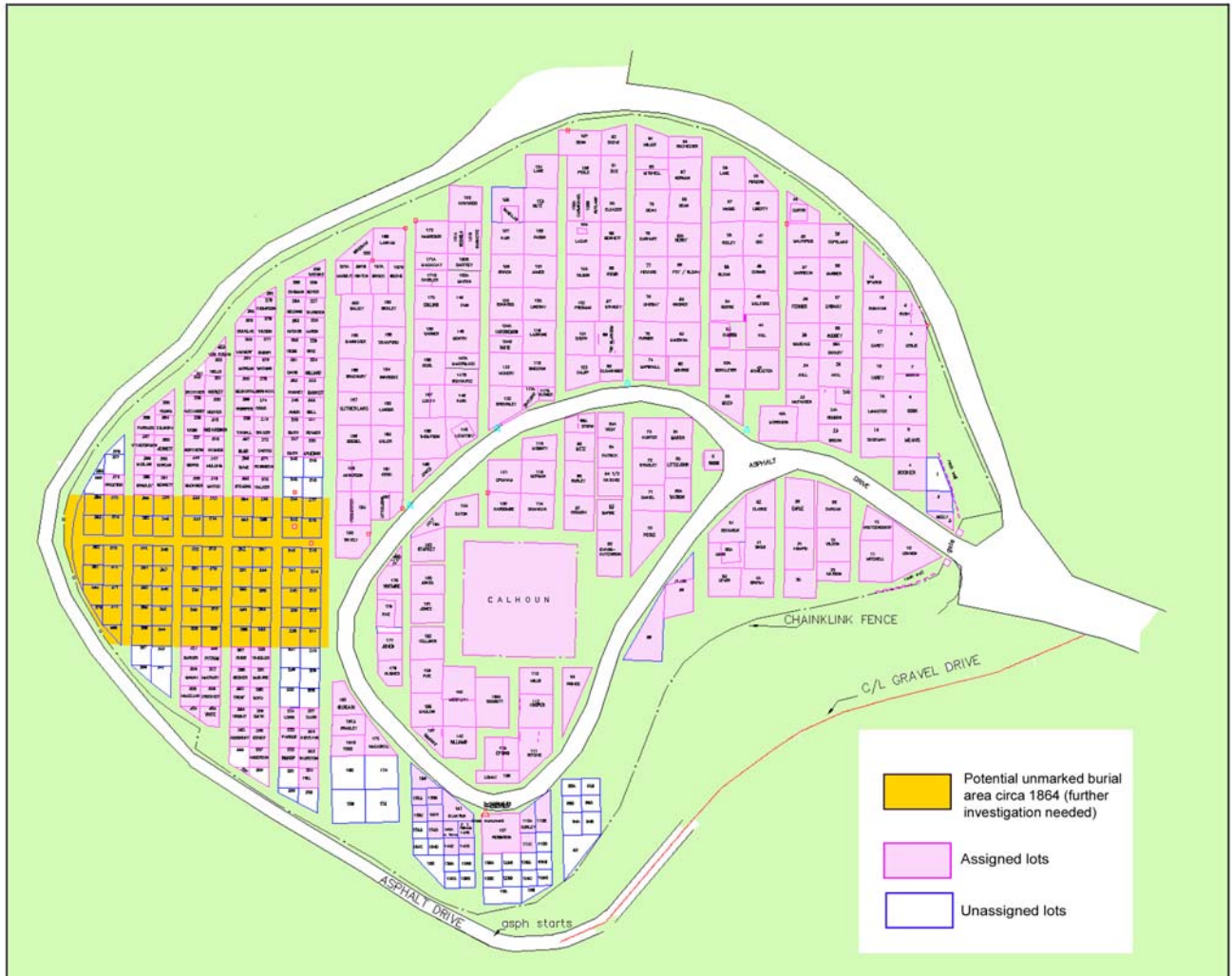
Existing cross-tie retaining wall

Issue 9: Although some efforts have been made to mitigate erosion within the main cemetery, some areas remain concerns. Pictured left is a cross-tie retaining wall. This wall should be replaced with a structurally sound retention structure that fits the architectural aesthetic set by the wall built near the Calhoun family plot.

Site Security

In the Spring of 2001, the headstone of James Edward Calhoun was stolen. Monuments in the cemetery are tangible records of Clemson history that should be highly valued and protected from theft and vandalism. The headstone has since been replaced, but, its authenticity will never be recovered. Unfortunately, this loss raises concerns regarding site security. A chain-link fence currently encloses the perimeter of the main cemetery, but its height and integrity do not provide adequate perimeter enclosure.

Issue 10: The level of enclosure around the main cemetery should be assessed to provide reasonable accessibility by the general public during the day while deterring future threats of vandalism.



Cemetery Plot Status as of July, 2002

The illustration above depicts the plot capacity and occupancy status as of July, 2002. The boundary for potential unmarked burial plots has never been validated or determined. The area designated above represents the unassigned plots that overlay some of the area investigated in 1991 by Carrel Cowen-Ricks.

Cemetery plot statistics are as follows:

306 Assigned plots

53 Unassigned plots

69 Unassigned plots on potential unmarked burial plots

FUTURE DEVELOPMENT OPPORTUNITIES

PROPOSED PROGRAM OF FUTURE USE

section

4



PROPOSED LAND USE & DESIGN ISSUES

Land Use Concepts

The 2002 Long Range Master Plan classified the cemetery area as open green space to be preserved. The plan below suggests the location of a formal boundary that designates a specific area of land for cemetery use. This area represents approximately 17.3 acres. As development pressures on campus increase, the cemetery and the wooded buffer surrounding it will become increasingly attractive for building.

The illustration below shows various uses and purposes for the land area within the cemetery grounds. The land uses proposed build on existing patterns of development within the area. The development concepts are as follows:

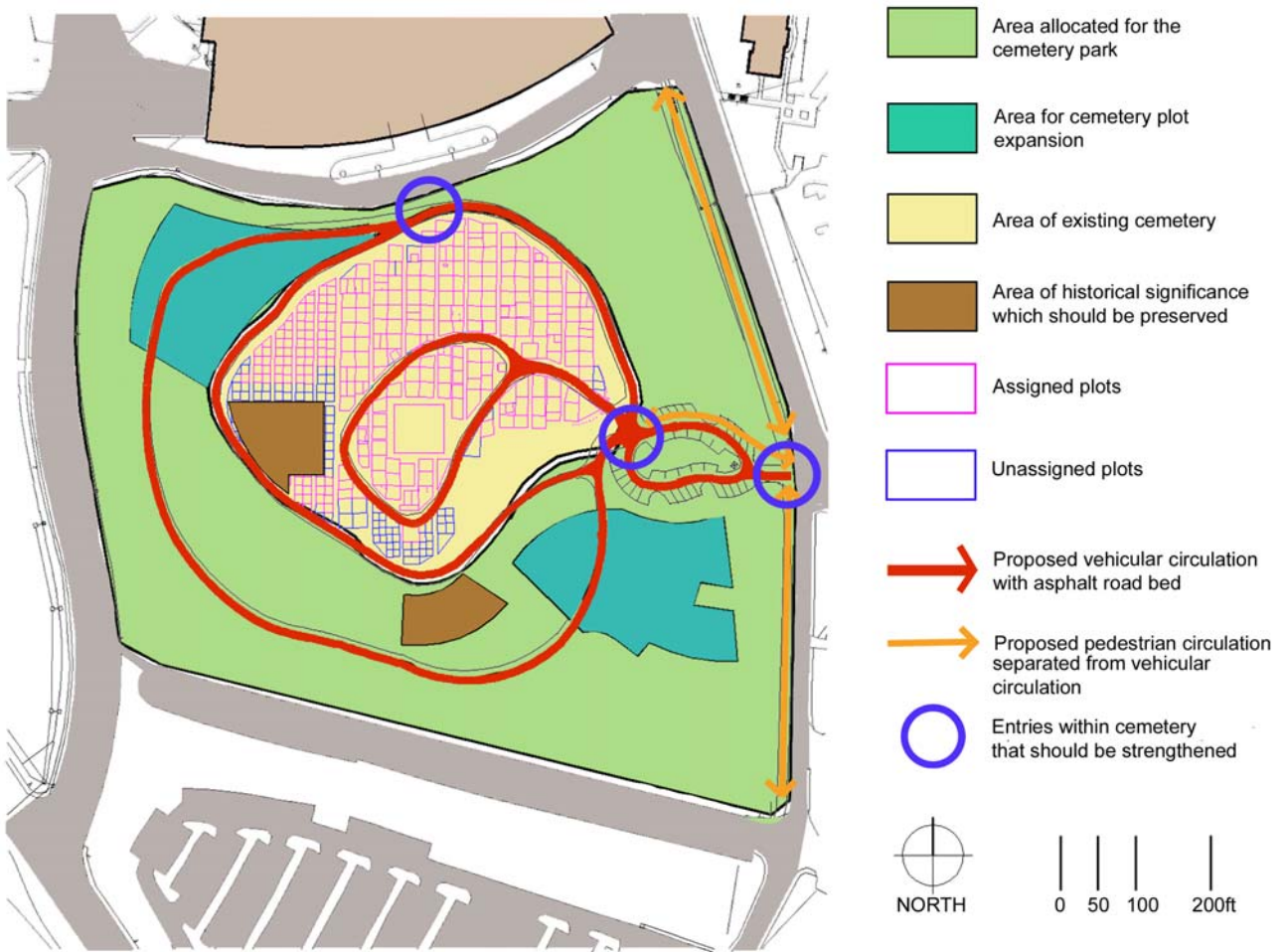
1. to identify locations for traditional burial plot expansion
2. to identify historically significant areas that need to be investigated and/or protected
3. to identify and maintain a wooded buffer zone around the cemetery



Proposed Land Use Plan

Circulation Concepts

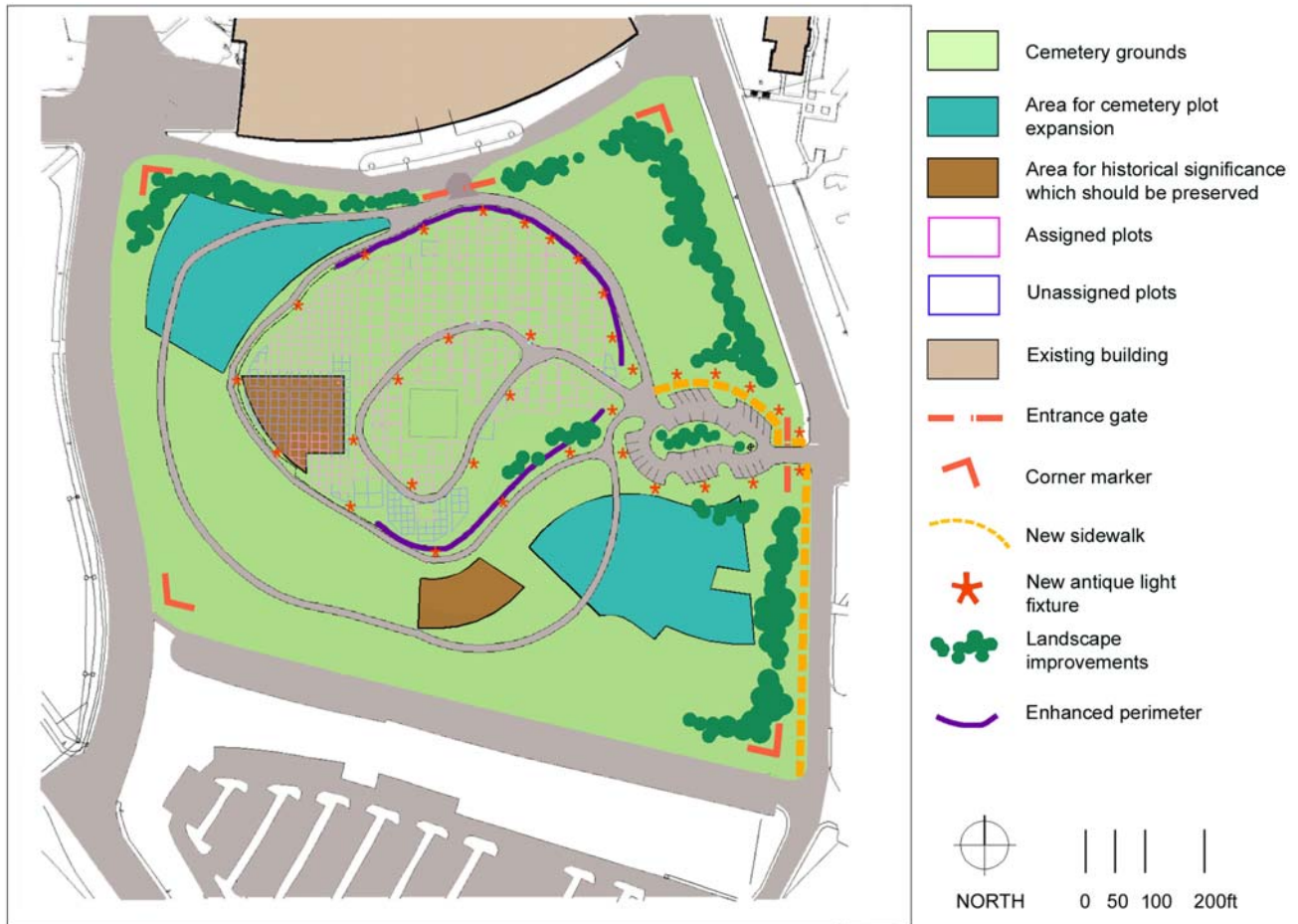
Proposed circulation, as depicted below, recommends no significant changes to current patterns. Proposed circulation, indicated by orange arrows, shows additional circulation routes that will be needed as new cemetery plots are established or as parking improvements are made. This plan proposes improved pedestrian circulation with the addition of new sidewalks along the east perimeter of the cemetery grounds. Shared vehicular and pedestrian circulation paths remain predominant within the interior of the cemetery grounds.



Proposed Circulation Concept

Expansion Areas

This plan shows two proposed areas for traditional plot expansion; the north area and the south area. The north area contains approximately 240 new plots, while the south area contains approximately 260 new plots. Both areas are located on slopes suitable for plot expansion.



Proposed Future Development Plan

Architectural Enhancements

The Woodland Cemetery is considered a historical asset in that it holds an ability to communicate, in a unique way, a history of Clemson University. No other resource can portray the University’s past in such a way as the Woodland Cemetery. Future development of the cemetery should focus on the preservation of this singular historical record while promoting education and awareness and assisting in telling the story of Clemson’s past. To promote the cemetery as a historical asset, physical improvements have been proposed that strengthen the identity and purpose of this place.

Among the improvements diagrammed above are:

- Cemetery Entrance Gates
- Granite perimeter/retaining walls (includes removal of chain-link fencing)
- Site Lighting
- Narrative Signage
- Parking Improvements
- Pedestrian Sidewalk Improvements
- Landscape Planting Improvements

Summary of Issues and Opportunities:

PROPOSED ACTION ITEMS

The purpose of this plan is to outline a course of action for (1) preservation and restoration of existing cemetery land, and (2) development and expansion opportunities within the existing land area. This section of the plan summarizes the issues as discussed in previous sections of this document. Because the issues vary in scope and priority, this section begins to categorize issues in short and long term objectives. Highest priority issues address preservation needs while lower priority issues call out routine maintenance needs.

Summary List

0 - 5 Year Objectives:

Investigate Unmarked Burials
 Cemetery Enclosure
 Upgrade Stacked Timber Retaining Walls
 Forecourt & Parking Improvements
 Woodland Management
 Coping Policy
 Monument Photometric Inventory
 Unmarked Fieldstone Investigation

5 - 10 Year Objectives:

Caretaker Position
 Road Improvements
 Narrative Signage
 Site Lighting

The above objectives are detailed on the following pages.

0 - 5 Year Objectives:

Investigate Unmarked Burials / Preservation Need (Issue 1:pg.10)

Sixty-eight (68) Unassigned plots are located within the area investigated by Dr. Cowen-Ricks. Before any plots are assigned in this area, further investigation and final conclusions should be made to ensure potential unmarked burial grounds are not desecrated. (Refer to p. 17 Present Cemetery Plot Status)

Action: Consult State Institute of Archeology and Anthropology to conduct Ground Penetrating Radar (GPR) investigation of site. Reach a conclusion about the findings from the 1991 archaeological study. Conduct further investigation if needed to reach conclusion. Assistance may be provided by the state archaeology office. Based on findings, either assign plots or place monument to unknown burials.

Funding: One-Time Funds

Contact Information:

Jonathan M. Leader, State Archeologist
State Institute of Archaeology and Anthropology
1321 Pendleton Street
Columbia, SC 29208-0071
803.777.8170
803.734.0567
803.799.1963
leader@sc.edu

Cemetery Enclosure / Development Opportunity (Issue 10: pg. 19 & 24)

The level of enclosure around the main cemetery should be assessed to provide reasonable accessibility by the general public during the day while deterring future threats of vandalism.

Action: Determine what reasonable accessibility is for the cemetery and balance public accessibility with site security. Determine how the gate and perimeter fencing is to function and develop design for implementation.

Funding: One-Time Funding

Replace Cross-Tie Walls / Preservation Need (Issue 9: pg.19)

Although some efforts have been made to mediate erosion within the main cemetery, some areas are of concern. Stacked timber walls need to be upgraded with a more structurally sound retention structure that fits the architectural aesthetic set by the wall built near the Calhoun family plot.

Action: Facilities to design and build new granite retaining wall as needed to mediate erosion and provide perimeter security for main cemetery.

Funding: One-Time Funding

0 - 5 Year Objectives con't.:

Cemetery Parking / Development Opportunity (Issue 5: pg.17)

Parking on the site is not clearly delineated and is in poor condition. Parking conditions on the site do not meet campus standards of quality for public parking facilities.

Action: Develop schematic site improvement plan. Parking improvements to facilitate special events and cemetery related activities only. Parking should not be developed as part of the campus inventory. Development plans for the cemetery should be planned in conjunction with improvements needed for the intersection of South Palmetto Boulevard and Williamson Road. Design should be associated with potential development of parking structure to be placed in the existing Sistine Hall parking lot. Additional coordination and planning is needed to evaluate timing and appropriateness.

Funding: One-Time Funds (budget with parking structure & intersection improvements)

Woodland Management / Preservation Need (Issue 7: pg.19)

Although the center and main portions of the cemetery are composed of hardwoods, most of the site is a Loblolly pine forest. Pine beetle damage has been reported in the cemetery. The longevity of the pine forest is questionable. The pine forest plays a critical role in providing the separation and seclusion needed to support the mood of the cemetery.

Action: Develop a Woodland Cemetery tree management fund. Add proviso to cemetery policy giving full ability to cemetery management to plant new trees within the main cemetery as needed to ensure preservation of woodland character. Procedures should be in place to facilitate the planting of new trees within existing plots when necessary.

Funding: One-Time Funds

Coping Policy / Preservation Need (Issue 8: pg.19)

A potential threat to the trees within the main cemetery area comes from the installation of coping around individual grave plots. Although coping is considered a standard practice, the excavation required to install coping severs both structural and feeder roots critical to the survival of established trees. The effects of such excavation may only be detected years after the initial damage is done.

Action: Recommend and approve change to existing policy to discontinue current and future use of coping within the cemetery.

Funding: Not Applicable

0 - 5 Year Objectives con't.:

Monument Photometric Inventory / Preservation Need

(see section on “Site Security” pg.19)

In the Spring of 2001, the headstone of James Edward Calhoun was stolen. Monuments in the cemetery are tangible records of Clemson history that should be highly valued and protected from theft and vandalism. The headstone has since been replaced, but its authenticity will never be recovered.

Action: Develop scalable photographic inventory of all monuments and markers for future reference to support duplication replacement as required.

Estimated Value: Potential Special Interest Group Project

Unmarked Fieldstone Investigation / Preservation Need (Issue 3: pg.12)

To date, investigations are inconclusive and cannot validate the presence of unmarked burial plots in this area. As time has passed, suspected “head and foot stone markers” have become less detectable. A timely and conclusive investigation of this site remains a standing need.

Action: Consult State Institute of Archeology and Anthropology to conduct Ground Penetrating Radar (GPR) investigation of site. If burials are validated, erect monument to unknown buried and define perimeter to preserve and protect. Contact state archaeology office for potential services available for state property investigations. (See State Archaeologist Contact Information)

Funding: One-Time Funds

5 - 10 Year Objectives:

Caretaker Position / Maintenance Need (Issue 2: pg.11)

The University Landscape Services Department currently maintains the cemetery as labor is available. However, with an increasing number of new plots, maintenance needs will continue to grow.

Action: Decide what level of upkeep is required currently and in the future. Consider the point when a cemetery caretaker will be required to maintain grounds and oversee cemetery activities.

Funding: Annual Funds (FTE)

Road Improvements / Maint. & Expansion (Issue 4: pg.17 & 23)

Roads throughout the site are hazardous for both autos and pedestrians and should be repaved.

Action: Develop cemetery maintenance and enhancement fund for roadway improvements.

Funding: One-Time Funds

Narrative Signage / Development Opportunity (pg. 24)

To incorporate narrative signage within the cemetery for the purpose of educating the public and to assist in telling the story of Clemson's past. Story-line of information should point to defining events in Clemson's past while correlating these events with dates presented within the cemetery.

Action: Develop historical information that relates to people and dates within the cemetery. Develop signage design to fit cemetery aesthetic. Phased implementation as funding is available.

Estimate Value: One-time Funds

Site Lighting / Development Opportunity (Issue 6: pg.17)

Site lighting does not currently exist within the cemetery. Considering the somewhat remote location of the area, site lighting should be considered in limited locations. Campus safety is an ongoing concern. Increasing public awareness of the cemetery and its history will bring both visitors and unwanted vandalism. Site lighting will become an increasing need as safety and site security needs increase.

Action: Develop cemetery maintenance and enhancement fund for site lighting improvements.

Funding: One-Time Funds (Athletics potential funding partner)