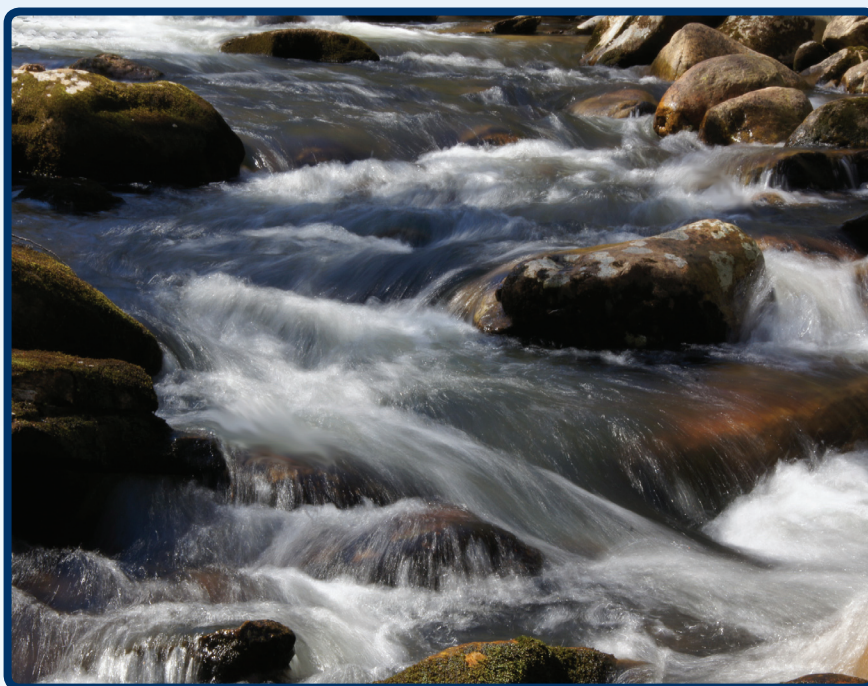


PICKENS COUNTY
stormwater
PARTNERS



Annual Report of Activities

YEAR 4 / MAY 2011 - APRIL 2012

JUNE 2012



Executive Summary

In the fifth year of the National Pollutant Discharge Elimination System (NPDES) General Permit for Stormwater Discharges from regulated Small Municipal Separate Storm Sewer Systems (SMS4s) for Pickens County, the Cities of Easley, Liberty, Pickens, and Pickens County along with educational partner organizations continued stormwater education initiatives as the Pickens County Stormwater Partners (PCSP), formerly the Pickens Countywide Stormwater Consortium. The year 2011-2012 was the fourth year of the PCSP partnership, which is responsible for addressing the minimum control measures one and two stated within the NPDES permit. These measures direct SMS4 communities to deliver public education and outreach programs with public involvement and participation.

Using the 303(d) List of Impaired Waterbodies, workshop and event surveys, and feedback from citizens and stormwater professionals in the county, the PCSP identified target pollutants and audiences for the Activity Year 4, May 1, 2011 through April 30, 2012. Education was targeted at key interest groups including the general public, professionals involved in land use and development, homeowners, youth, and the business community. Overall, stormwater awareness was retained as the major focus of the educational process, with emphasis placed on pollutants of concern including fecal coliform bacteria, sediment, litter, and nutrients.

The PCSP grew with the addition of new educational partners and worked together to increase awareness of stormwater issues. The partnership remains dedicated to protecting water resources in the county's two river basins (Watershed Map, Appendix A) and increasing water stewardship throughout Pickens County by providing stormwater educational and involvement opportunities to all citizens.



Saluda River Basin



Savannah River Basin



Scottie Ferguson
*Stormwater Manager,
Pickens County*

"We are excited about this collaborative educational opportunity being facilitated by Clemson University and Carolina Clear. We feel strongly that a regional approach, along with the cities of Easley, Pickens and Liberty will allow us to convey our important water quality messages in a more efficient manner."

2011 - 2012 Highlights

- New Name, Logo & Mascots
- Publications
- Displays & Outreach Materials
- Workshops
- Champions of the Environment
- Take Action for the Environment
- Green Steps
- Trash Bash
- Turtles on the Town
- Rain Gardens & Rain Barrels
- Bin & Barrel Sale
- Pet Waste Projects
- Stormwater Speaker Series
- Water 'n' Wildlife Day



Virginia Hawkins Falls, Pickens County

TOTAL OUTREACH ACTIVITIES AND TOTAL NUMBER REACHED (*estimated*)

1. Brochures/Newsletters (Outreach Materials): 60,610
2. Workshop/Seminars (Presentations): 963
3. Posters (Exhibits, Fairs & Festivals): 19,685
4. Newspaper/Magazine Articles: 240,538
5. Web site (estimated hits): 44,751
6. Utility Bill Inserts: 12,400
7. Radio Ads: 27,000/week/statewide
8. Television Ads: 356,111
9. Other: Billboard: 27,571/day
10. Other: Pet Waste Projects: 7,225
11. Other: Litter Sweeps: 1,705 people
12. Other: Certification Programs: 54
13. Other: Partner Committee Meetings: 305
14. Other: Bin & Barrel Sale: 131
15. Other: Water 'n' Wildlife Project Day: 55
16. Other: Youth Education & Involvement: 3,480
17. Other Soil/Fertilizer Recommendations: 443

Table of Contents

Executive Summary.....	I
Community Partners.....	1
Education Partners.....	2
Mission and Goals	3
Pickens County TMDLs.....	4
Report Format.....	5

Public Education

Billboard	6
Internet.....	7
Television and Radio.....	8
Overview of Year 4.....	9
Publications - Articles	10
Year 4 Highlight - Rainwater Harvesting.....	13
Outreach Materials - Brochures, Booklets, Manuals	14
Outreach Materials - Promotional Items.....	16
Year 4 Highlight - Pet Waste Projects.....	17
Exhibits - Permanent	18
Exhibits - Fairs and Festivals	19
Presentations and Workshops	20

Public Involvement

Rain Garden & Rain Barrel Installation Workshops	26
Litter Sweeps.....	27
Year 4 Highlight - Water 'n' Wildlife Day.....	29
Partner Committee Meetings.....	30
Programs	31
Youth Involvement	32
Year 4 Summary	37
Appendix A - Pickens County Watershed Map.....	38
Appendix B - Articles	39
Appendix C - Fliers and Posters.....	42
Appendix D - Education Plan	49
Authors and Acknowledgements	51

The Small Municipal Separate Storm Sewer Systems (SMS4s) community partners in Pickens County are dedicated to the regional stormwater education concept. The members work together to better facilitate the development of a unified approach to education and outreach within the county.

Local SMS4 Partner Representatives

MS4	Partner Representative
Pickens County	Scottie Ferguson
City of Easley	Land Planning Associates, Inc.
City of Liberty	Olen Hamlin
City of Pickens	Katherine Brackett Michael Tate



Education Partners

The education partners include agencies, organizations and individuals that share an interest in educating the public about stormwater pollutant issues. This educational partnership ensures a uniform and consistent message while leveraging valuable resources, organizational strengths, and collaboration to reduce duplication of efforts.

CENTER for
WATERSHED
EXCELLENCE



CLEMSON UNIVERSITY
INSTITUTE of APPLIED ECOLOGY



Jr. Naturalist Program



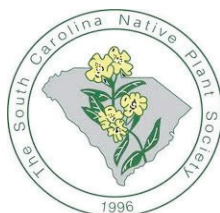
city of
greenville



**US Army Corps
of Engineers**



Save Our Saluda.org



Lake Hartwell Association



Friends of Lake
Keowee Society



Natural Resources Conservation Service



A Public Service of Clemson University

Soil & Water District



South Carolina
Department of Transportation



PROMOTE PROTECT PROSPER



FOUNDED 1892



Pickens County Museum and Hagood Mill



ANDERSON
COUNTY
SOUTH CAROLINA



www.pickens.lib.sc.us



"where nature and culture meet"



a Clemson Extension Program



**LAND
PLANNING
ASSOCIATES, INC.**
CIVIL ENGINEERING



Mission and Goals

MISSION STATEMENT

To develop and implement a broad-based education program that informs citizens about the issues of stormwater management and explains the role they and the business community can play in solving these issues.

GOALS

- Maximize efficiency of stormwater education efforts using a county-wide regional approach.
- Help local SMS4s meet NPDES Phase II Stormwater Program permit requirements for stormwater education and involvement by providing educational resources and services such as public education, outreach and community involvement.
- Develop a comprehensive stormwater education plan for the region that capitalizes on local training resources to meet the needs of local SMS4s.
- Serve as a model for collaborative stormwater education.



“Water is the most critical resource issue of our lifetime and our children’s lifetime. The health of our waters is the principal measure of how we live on the land.”

- Luna Leopold

We All Live Downstream...

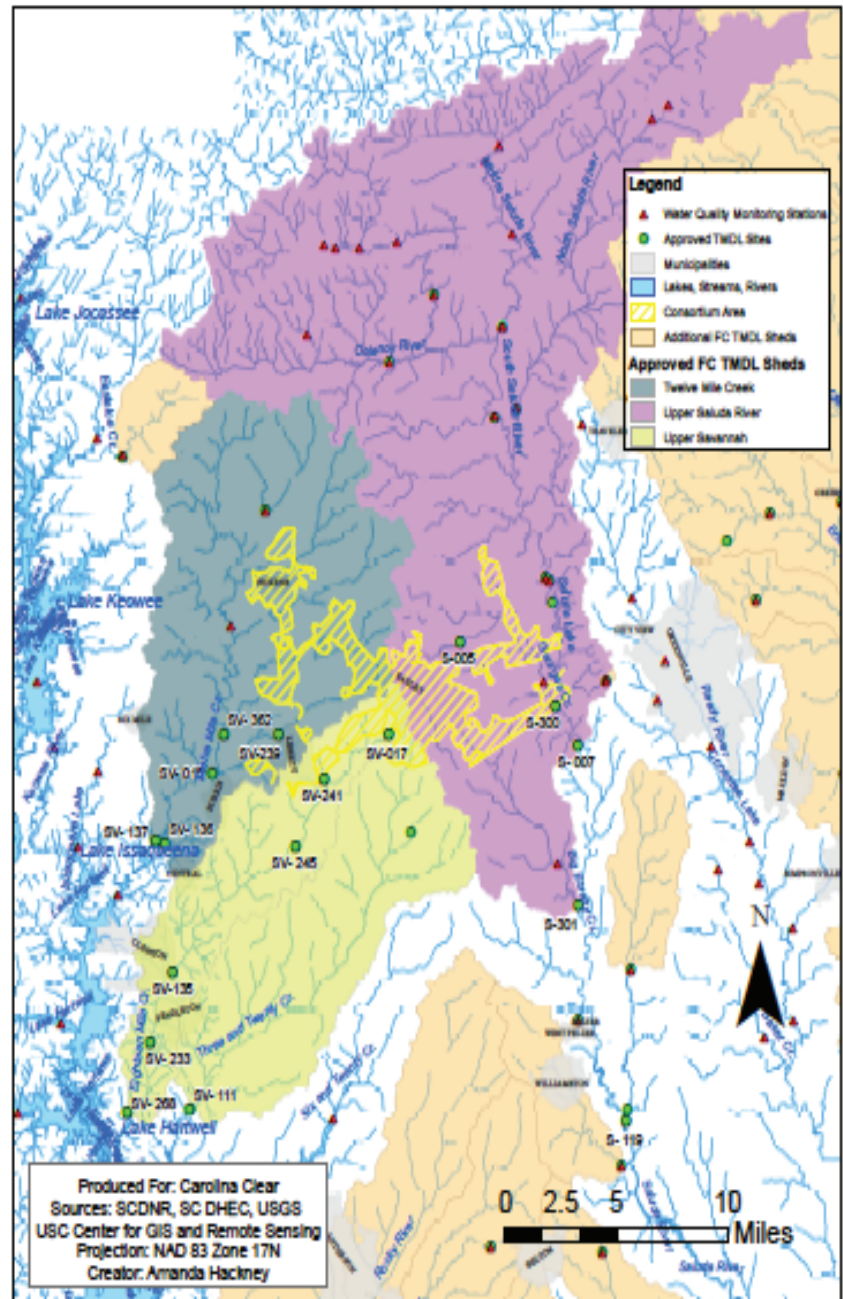
Stormwater is the runoff that occurs from rain, irrigation and snow melt and everything that is picked up along the way as this untreated runoff travels downhill into our streams, rivers and lakes.

In compliance with Section 303(d) of the Clean Water Act, each state and territory submits a list of monitored waterways that do not meet their designated water quality standard for one or more parameters as per available guidance. This is also known as the list of Impaired Waterbodies, and it is used to determine if the waterway's impairment can be addressed through designating a Total Maximum Daily Load, or TMDL. Therefore, TMDL may refer to the calculation of a pollutant entering a waterbody as well as a document which outlines potential sources of that pollutant within a watershed, information on the calculation, and relevant information including maps, figures and pictures.

The map to the right shows the TMDL watersheds that have been approved and affect Pickens County. The county has several other listed impaired waters on the 303(d) list with TMDL target dates ranging from 2010-2019. Causes of impairments include turbidity, macroinvertebrates, copper, fecal coliform, polychlorinated biphenyls, and hydrogen ion concentration.

The TMDL process is a regulatory process, therefore, there are many ways in which a TMDL can play a role in local government decision-making. For our regional education efforts, the TMDL process is an important consideration because it offers data on what the water quality concerns are within the region and, potentially, if they are related to stormwater. Using this information, the PCSP can better decide what pollutants or behaviors should be targeted for education and public involvement.

Fecal TMDL Watersheds



Report Format

The goal of this report is to provide a detailed outline of the activities that took place in the county over Activity Year 4; May 1, 2011 to April 30, 2012. Each activity is briefly described along with the lead provider, supporting partners, date, estimated number of impacts, and target audiences. This report categorizes activities into public education and public involvement sections. All activities are recorded and stored in an online database that is managed by the Clemson University Carolina Clear program.

Legend

Abbreviation	Report
BMP	Best Management Practice
CEPSCI	Certified Erosion Prevention & Sediment Control Inspector
CYN	Carolina Yards & Neighborhoods
FOG	Fats, Oil, and Grease
NPDES	National Pollutant Discharge Elimination System
NRCS	National Resources Conservation Service
PCSP	Pickens County Stormwater Partners
SCBG	South Carolina Botanical Gardens
SC DHEC	South Carolina Department of Health and Environmental Control
SC DNR	South Carolina Department of Natural Resources
SDPC	School District of Pickens County
SMS4	Small Municipal Separate Storm Sewer System
TMDL	Total Maximum Daily Load

Abbreviation	Target Audience
B	Boat Owners, Operators, and Marinas
C	Commercial
EA	Elected and Appointed Officials and High Level Staff
GP	General Public
HE	Higher Education
M	Municipal
NR	Natural Resources Staff
P	Pet Owners
R	Residential - Homeowners and Renters
T	Technical - Engineers, Contractors, Developers, Staff
YT	K12 Youth and Teachers

Report Categories

The Public Education section of this report is organized by outreach methods with these sub-section titles: mass media, publications, outreach materials, permanent exhibits, exhibits (fairs and festivals), presentations and workshops, and soil samples.

The Public Involvement section of this report is organized by activity types with these sub-section titles: installation workshops, litter sweeps, events, meetings, programs, and youth involvement.

Mass Media (Billboard)

LEAD PROVIDER	SUPPORTING PARTNER	ACTIVITY	DATE	ESTIMATED # OF IMPACTS	TARGET AUDIENCE
Clemson Carolina Clear	Outdoor Advertising Association of SC	One Billboard is located in Pickens County, Hwy 123/153 intersection, with information about what stormwater is and how it affects our water resources	2011-2012	27,571/day	B, C, GP, M, R, T



PROGRAM UPDATE: "We All Live Downstream..."

The International Academy of Fine Arts presented Ruszkowski with a Communicator Award of Distinction for his billboard design promoting Carolina Clear, a Clemson Extension program that informs South Carolina citizens about their role in reducing water pollution.

Mass Media (Internet)

LEAD PROVIDER	SUPPORTING PARTNER	ACTIVITY	DATE	ESTIMATED # OF IMPACTS	TARGET AUDIENCE
Pickens County		Pickens County Stormwater webpage	Ongoing	1,162	B, C, GP, P, R, T
Clemson Carolina Clear	PCSP	Carolina Clear and PCSP website (statewide views)	Ongoing	27,139	B, C, GP, P, R, T
US EPA	Clemson Extension	EPA Watershed News included feature on Carolina Clear about the regional stormwater education and involvement partnerships underway in South Carolina	February 8, 2012	16,450	GP, M, NR, R, T

CLEMSON
PUBLIC SERVICE ACTIVITIES

Carolina Clear

CU > Public Service > Carolina Clear > Regional Consortiums and Communities > Pickens County Stormwater Partners > Pickens County Stormwater Partners

Pickens County Stormwater Partners
About Us
Educational Materials
Programs
Partners
Past Programs
Links
Archives
TMDL Information

PICKENS COUNTY stormwater PARTNERS

Pickens County along with the cities of Easley, Liberty, and Pickens have collaborated with Clemson University's Carolina Clear program to educate and involve residents in stormwater management.

Together, this regional effort will develop and implement a broad-based education plan that informs citizens about the issues of stormwater management and the role they and the business community can play in solving these issues.

Congratulations to Pickens Middle School

SC DHEC Champions of the Environment

Watch YouTube Video - <http://www.youtube.com/watch?v=LvCpxUN5BNw>
Read about the award - <http://www.scdhec.gov/environment/water/champions/>

PCSP Annual Report and Presentations of Activities

The 2010 - 2011 Annual Report of Activities for Pickens County Stormwater Partners is available. Also available are slideshows of consortium activities for: June-September 2011; September-December 2011 and January-March 2012.

Upcoming Events

Junior Naturalist Program
The Natural World Awaits!
[Download Program Brochure](#)

Rain Barrel 101 Workshop
Friday, June 8
Environmental Education of SC
Annual Conference
Pleasant Ridge Camp, Marietta, SC
[Download Brochure](#)

Home & Garden Information
Agricultural Services
Extension
Experiment Station
Livestock-Poultry Health
Regulatory Services

Social Media Directory
f t y b

Make An Online Gift Now!

Mass Media (Television)

LEAD PROVIDER	SUPPORTING PARTNER	ACTIVITY	DATE	ESTIMATED # OF IMPACTS	TARGET AUDIENCE
PCSP	YouTube Commercial	We All Live Downstream commercial www.youtube.com/watch?v=NuiancZNNvg	Ongoing	111	GP, R
Clemson Extension	SC ETV	Making It Grow: award-winning weekly one-hour TV program on PBS. Live call in show airs Tuesday evenings from 7-8 PM and answers home gardening and landscape questions from around South Carolina	Ongoing	156,000 state-wide	GP, R
Clemson Carolina Clear		Charter Media - We All Live Downstream campaign	August 1-14, 2011	200,000 households for Pickens and Greenville counties (196 spots)	GP, R



Mass Media (Radio)

LEAD PROVIDER	SUPPORTING PARTNER	ACTIVITY	DATE	ESTIMATED # OF IMPACTS	TARGET AUDIENCE
Clemson Extension		<i>Your Day</i> , One-hour weekly radio program on NPR. Recurring programs on horticulture, entomology/pesticides, and natural resources	Ongoing M-TH Noon-1PM	27,000 state-wide each week	GP



RADIO: *Your Day* is a radio magazine produced as a public service of Clemson University Radio Productions, featuring a wide range of topics of interest to South Carolina residents and visitors alike. Each Monday through Thursday at noon, *Your Day* provides programming in the NPR tradition, but with a South Carolina flavor.

With a new name, new logo and also a new coordinator, 2011-2012 was an eventful year for collaborative stormwater outreach in Pickens County! Cathy Reas Foster joined the Carolina Clear team in February 2011 to coordinate the former Pickens Countywide Stormwater Consortium, and together, the group created a new name, logo and mascots.

The Pickens County Stormwater Partners (PCSP) built new partnerships through working together on various projects and events including Water 'n' Wildlife Day, the Stormwater Speaker Series, the Lawn Mower Exchange, pet waste projects, presentations, workshops, and youth projects. The partners worked with the SC Botanical Garden and the SC Department of Natural Resources to install rain gardens and rain barrels, which included hosting public workshops. The partners also collaborated with Pickens Middle School on a SC DHEC Champions of the Environment award project, "Watershed Connections" and "Turtles on the Town," and with Pickens High School on a Take Action for the Environment project, "Water Wheel of Life" at Hagood Mill. These activities provided water quality and water resource education and involvement with the community.



Publications

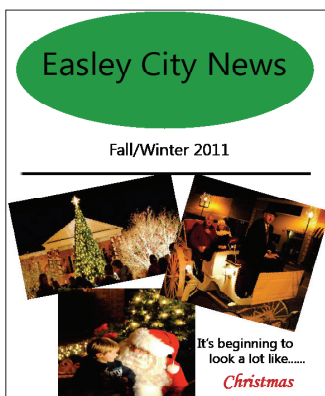
ARTICLES - NEWSPAPERS, NEWSLETTERS, & MAGAZINES

LEAD PROVIDER	SUPPORTING PARTNER	ACTIVITY	DATE	ESTIMATED # OF IMPACTS	TARGET AUDIENCE
Easley City News	City of Easley, Land Planning Associates	<i>Recycling, E-Waste, Yard Debris and New Ashtrays and Trash Cans</i> articles featured in the <i>Easley City News</i> newsletter	Spring/Summer 2011	8,500	GP, R
City of Pickens	PCSP	<i>Nobody wants polluted water</i> bill stuffer	May 2011	4,400	R
South Carolina Wildlife	Clemson Carolina Clear	Articles <i>Saving for a Rainy Day</i> and <i>Harvest the Rain</i> by Carolina Clear featured in the <i>South Carolina Wildlife Magazine</i>	May/June 2011	47,000	GP, NR, R
The Liberty Focus	City of Liberty, PCSP	<i>Grasscycle</i> article featured in <i>The Liberty Focus</i> newsletter	June 2011	3,600	GP, R
Hartwell Lake News	PCSP	<i>We All Live Downstream...</i> article featured in the <i>Hartwell Lake News</i> newspaper	July 7, 2011	30,000	B, GP, R
The South Carolina Nurseryman	Clemson Carolina Clear	Article featured in <i>The South Carolina Nurseryman</i> magazine discussing the Carolina Clear Rainwater Harvesting for Homeowners Manual	July/August 2011	535	C, GP, R
Easley City News	City of Easley, Land Planning Associates	Articles <i>Stormwater</i> and <i>News from the Public Works Department</i> featured in the <i>Easley City News</i> newsletter	Fall/Winter 2011	8,500	GP, R
The Liberty Focus	City of Liberty, PCSP	<i>Stormwater News Why we pick it up!!!</i> article featured in <i>The Liberty Focus</i> newsletter focusing on pet waste.	September 2011	3,600	GP, R
City of Pickens	PCSP	<i>Leaf it on the Lawn: Tips for Proper Yard Debris Disposal</i> bill stuffer	October 2011	4,000	R
Anderson Independent	Duke Energy, Clemson Extension	<i>Duke outing lets youngsters connect to nature</i> article about the fifth annual Duke Energy Outdoor Family Adventure Day in the <i>Anderson Independent</i> newspaper	October 1, 2011	23,273	GP, YT
The Pickens Sentinel	Pickens Middle School, PCSP	<i>Turtles on the Town</i> featured in <i>The Pickens Sentinel</i> newspaper	November 9, 2011	3,500	GP
The Liberty Focus	City of Liberty, PCSP	<i>Water & Sewer/Vehicle Maintenance/Stormwater</i> article featured in <i>The Liberty Focus</i> newsletter	December 2011	3,600	GP, R
SC Native Plant Society	Clemson Carolina Clear, PCSP	<i>Using Native Plants to Enhance Water Resources</i> article featured in the <i>Upstate Happenings</i> newsletter of the SC Native Plant Society	January 2012	450	GP, R
The Gardens Gate	SC Botanical Garden, PCSP	<i>Follow the path of a raindrop</i> article featured in <i>The Gardens Gate</i> newsletter discussing the advantages of rain gardens	January 2012	1,300	GP, R

Publications

ARTICLES - NEWSPAPERS & NEWSLETTERS

LEAD PROVIDER	SUPPORTING PARTNER	ACTIVITY	DATE	ESTIMATED # OF IMPACTS	TARGET AUDIENCE
The Pickens Sentinel	Pickens Middle School, PCSP	<i>Pickens Middle School honored as Champion of the Environment</i> article featured in <i>The Pickens Sentinel</i> newspaper	January 4, 2012	3,500	GP, R, YT
Pickens County Courier	Pickens Middle School, PCSP	<i>DHEC awards Pickens Middle grant for "watershed connections"</i> article in the <i>Pickens County Courier</i> newspaper	January 4, 2012	7,200	GP, R, YT
The Greenville News	Pickens Middle School, PCSP	<i>School named environment Champion</i> article in <i>The Greenville News</i> newspaper	January 14, 2012	49,818	GP, R, YT
The Greenville News - Pickens County Edition	Pickens Middle School, PCSP	<i>Pickens Middle School honored as...Champion of the Environment</i> article in the <i>Pickens County Edition</i> newspaper	January 17, 2012	48,939	GP, R, YT
The Liberty Focus	PCSP	<i>Public Works/Code Enforcement Officer/ Recycling Manager</i> article featured in <i>The Liberty Focus</i> newsletter discussing recycling	March 2012	3,600	GP, R
City of Pickens	PCSP	<i>Pet Waste</i> flyer bill stuffer	March 2012	4,000	R
The Pickens Sentinel	Pickens County Beautification & Environmental Advisory Committee	<i>Trash Talkin</i> photo featured in <i>The Pickens Sentinel</i> newspaper showing 3rd graders from A. R. Lewis Elementary watching an environmental presentation at the Pickens County Traveling Trash Bash	March 7, 2012	3,500	GP
Around Town	City of Pickens	<i>Volunteers clean up Main Street, Highway 8 during City Wide Cleanup Day</i> article featured in <i>Around Town</i> newsletter for the City of Pickens	April 2012	600	GP
Anderson Independent	Duke Energy, Clemson Extension	<i>Engaged with the Earth: home-schooled students visit the World of Energy and learn about watersheds</i> article featured in the <i>Anderson Independent</i> newspaper	April 23, 2012	23,273	GP, YT



Publications

ARTICLES - LAKE ASSOCIATION NEWSLETTERS

LEAD PROVIDER	SUPPORTING PARTNER	ACTIVITY	DATE	ESTIMATED # OF IMPACTS	TARGET AUDIENCE
Lake Hartwell Association (LHA)	Clemson Carolina Clear	<i>Trashing Our Environment and Litter Prevention</i> featured in the LHA Newsletter	Summer 2011	2,150	B, C, GP, R
Lake Hartwell Association	Clemson Carolina Clear	<i>Septic Systems: Out of Sight should not mean out of Mind</i> featured in the LHA newsletter	Fall 2011	2,150	B, C, GP, R
Lake Hartwell Association	PCSP, Clemson Carolina Clear	Articles <i>Lakeshore Stewardship - The Clemson Experimental Forest Model</i> , <i>Hartwell Lake Clean-Up Wrap-Up</i> , and <i>What to do about Pet Waste?</i> featured in the LHA newsletter	Winter 2011	2,150	B, C, GP, R
Lake Hartwell Association	PCSP, Clemson Carolina Clear	Articles <i>Water 'n' Wildlife Lake Hartwell & the Clemson Experimental Forest Partners Project Day 2012</i> and <i>A More Green Way to Clean</i> featured in the LHA Newsletter	Spring 2012	2,150	B, C, GP, R
Friends of Lake Keowee Society	PCSP	<i>We All Live Downstream...</i> featured in The Sentinel newsletter	May/June 2011	1,775	B, C, GP, R
Friends of Lake Keowee Society	Clemson Extension	<i>Carolina YardStick Gardens</i> article featured in The Sentinel newsletter	July/August 2011	1,775	B, C, GP, R
Friends of Lake Keowee Society	PCSP	<i>Why We Pick Up Dog Doo</i> article featured in The Sentinel newsletter	September/October 2011	1,775	B, C, GP, R
Friends of Lake Keowee Society	PCSP, Clemson Extension	<i>Leaf it on the Lawn: Tips for Proper Yard Debris Disposal</i> article featured in the Sentinel newsletter	November/December 2011	1,775	B, C, GP, R
Friends of Lake Keowee Society	PCSP	<i>We All Live Downstream</i> featured in the Sentinel newsletter	January/February 2012	1,775	B, C, GP, R
Friends of Lake Keowee Society	PCSP	<i>We All Live Downstream</i> featured in the Sentinel newsletter	March/April 2012	1,775	B, C, GP, R



Lake Jocassee

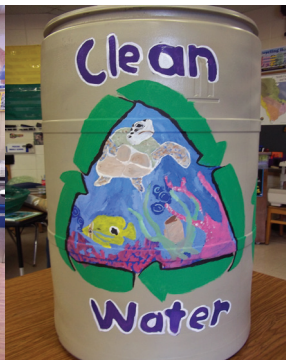


Lake Keowee



Lake Hartwell

Year 4 Highlight - Rainwater Harvesting



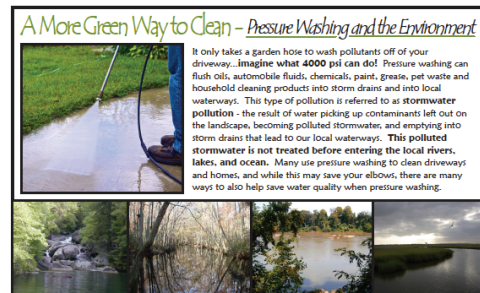
Rainwater harvesting is a stormwater best management practice, as well as a fun and effective way to educate homeowners, youth, and businesses about stormwater and watersheds. Rain barrels are a harvesting system that provide a greater awareness of the volume of water generated by impervious surfaces, such as rooftops, as well as an opportunity to utilize harvested rain for household needs, such as irrigation. The Pickens County Stormwater Partners are encouraging rainwater harvesting and are using rain barrels as an opportunity to educate about watersheds, stormwater, and water conservation. A program was implemented for youth, teachers, and community groups to increase awareness of stormwater issues by painting and installing rain barrels, harvesting rain water, and by providing an enviroscape demonstration to teach about watersheds and stormwater pollution. Participating groups included garden clubs, school classes, as well as the general public at public events and workshops. Rain barrels were beautifully and creatively designed and painted by students or the groups involved, and they will be included in a showcase of painted rain barrels on the Pickens County Stormwater Partners website.



Outreach Materials

BROCHURES, BOOKLETS, MANUALS

LEAD PROVIDER	SUPPORTING PARTNER	ACTIVITY	DATE	ESTIMATED # OF IMPACTS	TARGET AUDIENCE
Clemson Carolina Clear		Fats, Oil, Grease (FOG) and Pressure Washing Large Postcards	Ongoing	100	B, C, GP, R



Pickens Middle School	City of Pickens, PCSP	Turtles on the Town Tour and Brochure	Ongoing	1,000	C, GP, R, YT
-----------------------	-----------------------	---------------------------------------	---------	-------	--------------



Turtle 10 Turn right down Pendleton Street to the old jail. You'll see me the Spotted Turtle, *Sequoyah*, on the trail. I will be in my natural habitat, a bog garden on the nature walk. I would speak in Cherokee if you could hear me talk. I swim to the bottom of the bog when I'm sleepy. I'm protected too, so please watch out for me.



Turtle 11 Go back to Main Street in front of the Courthouse. Find me, the biggest turtle of them all (over 1000 lbs.) I'm *Henry*, the Leatherback Sea Turtle and I eat Cannonball jelly fish. Remember, I am also on the endangered species list. Females can lay a hundred eggs when they appear on shore. Then return to the ocean to swim some more.



Turtle 12 I'm the last turtle, *Sparky*, and I live where people learn. Go back to the fountain, down Jewel Street, and take a left turn. I'm the Eastern Box Turtle and I have a special trick. Into my shell, my head, feet, and tail, can all stick. I live on land and I'm the only one who hides like this. So come see the last on the Turtle Tour at PMS.

Brochures sponsored by



www.CannonHospital.org (864) 878-4791

GateHouse Restaurant
where the mountains begin

116 Ann Street, Pickens, SC 29671 Phone 864-507-4330

Monday - Saturday 11:30 - 2:00 4:30 - 8:30

Sunday 10:30 - 2:00

PICKENS COUNTY
stormwater
PARTNERS

Wallace Tool & Die, L.L.C.

Your Industrial Problem Solvers!!

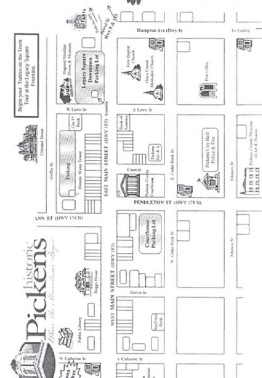
137 Airport Road Liberty, SC 29657

Ph 864-843-1071

Wallacetooldie@bellsouth.net



This brochure was printed on 70% recycled paper



Pickens Middle School - Community Connections

Promoting clean water

Turtle Statues By: *Zan Wells*



Outreach Materials

BROCHURES, BOOKLETS, MANUALS

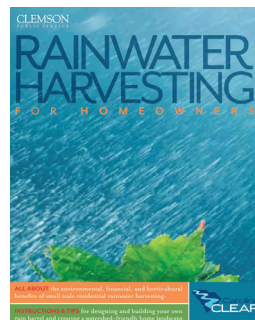
LEAD PROVIDER	SUPPORTING PARTNER	ACTIVITY	DATE	ESTIMATED # OF IMPACTS	TARGET AUDIENCE
Clemson Extension, Clemson Carolina Clear		Carolina Yards and Neighborhoods (CYN) Yardstick Workbook	Ongoing	100	GP, R

The Carolina Yardstick Workbook provides a guide to the nine principles of the Carolina Yards and Neighborhoods (CYN) program. This statewide program provides guidance on environmentally friendly home landscaping to minimize impact on SC's natural resources. The program focuses on techniques for water resource management, including stormwater runoff, and continues to be one of the primary outreach methods to reach residential audiences. Workbooks were distributed at public events as well as individual workshops and presentations.



Clemson Carolina Clear		Rainwater Harvesting for Homeowners	Ongoing	50	GP, R
------------------------	--	-------------------------------------	---------	----	-------

Carolina Clear produced a new Residential Rainwater Harvesting manual for South Carolina in the Spring of 2011. The new manual is designed to assist homeowners with designing and installing small-scale rainwater harvesting systems, primarily rain barrels. The manual also provides a variety of techniques for building your own rain barrel. Manuals were distributed at rain barrel workshops and public events.



Clemson Carolina Clear		Rain Gardens Manual	Ongoing	50	GP, R
------------------------	--	---------------------	---------	----	-------

The Carolina Clear Rain Garden Manual assists homeowners with the techniques and steps to install a rain garden and includes simple tips for rain gardening success and plant lists. Manuals were distributed at rain garden workshops and public events.



Outreach Materials

PROMOTIONAL ITEMS

ACTIVITY	ESTIMATED # OF IMPACTS	TARGET AUDIENCE
Recycled coloring sticker sheets	500	YT
Recycled water bottle pens	500	GP, M, T
No Dumping keychains	300	C, GP
Storm drain markers	50	C, GP, M, YT
Dog bag dispenser leash clips	200	C, GP, NR
Stickers	600	GP, YT
Pickens County Saves Energy and Water magnets	1,200	YT
Fish's Wish activity books	1,200	YT
Coffee mugs	130	EA, M, YT
Soy bean crayons	1,400	GP, YT
Decals	50	GP, NR
Recycled tire keychains	300	GP, R
Calendar magnets	50	GP, T
Cornhole board activity	30 People	GP



Year 4 Highlight - Pet Waste Projects

LEAD PROVIDER	SUPPORTING PARTNER	ACTIVITY	DATE	ESTIMATED # OF IMPACTS	TARGET AUDIENCE
PCSP	SC State Parks, SC Forestry Commission	Pet Waste Stations located in Pickens County	Ongoing	19	GP, NR, P
PCSP	SC State Parks, Mile Creek Park, Red Owens Park	Pet Waste Bags	Ongoing	7,200	GP, NR, P
PCSP	Humane Society, Veterinary Offices, Mile Creek Park	Pet Waste Displays	Ongoing	6	C, GP, NR, P



Because of the impairment of fecal coliform in county waterbodies, the Pickens County Stormwater Partners (PCSP) developed pet waste projects. The objectives are to increase awareness and knowledge of pet waste pollution, involve the public, and ultimately change behaviors to improve water quality. Other goals include partnering with civic and state organizations not only to educate partnering organizations, but also to involve them with the task of educating and working with the public to pick up pet waste. A pet waste flier/poster and recycled road signs with the wording "Protect Water" and a PCSP logo and Stormwater Fish mascot label were developed by the PCSP along with leash clip pet waste bag dispensers. Outreach partners and their involvement are as follows: Pet Waste Stations and "Protect Water" signs distributed to Downtown Park, City of Liberty; Red Owens Park, City of Easley; Downtown Park, City of Pickens; Table Rock State Park, Keowee-Toxaway State Park, and Devils Fork State Park, SC Parks; Long Shoals Park, SC Forestry Commission. "Protect Water" Signs were provided to existing Pet Waste Stations at The Bark Park, City of Easley (2 stations); Town Creek Park, City of Pickens (1 station); Freedom Park, City of Liberty (2 stations); Hagood Mill, Pickens County (1 station); Mile Creek Park, Pickens County (3 stations). Each station will be included in a database with the GPS location and nearest DHEC water quality monitoring station. Pet waste educational posters and fliers are displayed at City Halls: Liberty, Pickens, Easley and the County Administrative Facility. Pet waste fliers in a stand are displayed at four Veterinary offices; two in the county and two in the City of Easley. The pet waste flier, poster, and leash clips are displayed at Pickens County Mile Creek Park and Pickens County Humane Society.

Exhibits PERMANENT

LEAD PROVIDER	SUPPORTING PARTNER	ACTIVITY	DATE	ESTIMATED # OF IMPACTS	TARGET AUDIENCE
Clemson Extension	PCSP	Rain Garden at Pickens Extension Service/Chamber of Commerce Building	Ongoing	200	C, GP, R
SC Botanical Garden	PCSP, Clemson Carolina Clear	Rain Garden, Rain Barrels, Cistern at the SC Botanical Garden	Ongoing	5000	GP, HE, R, YT
PCSP	SC DNR, Clemson Extension	Rain Garden, Rain Barrel, & CYN Demonstration Site at the DNR building in Clemson	Ongoing	100	B, GP, NR, R



PCSP	Pickens County, City of Easley, City of Liberty, City of Pickens	Educational tabletop displays & posters for county and city administrative offices with materials to be distributed to public	Ongoing	1000 materials	GP
------	--	---	---------	----------------	----



Exhibits

FAIRS AND FESTIVALS

LEAD PROVIDER	SUPPORTING PARTNER	ACTIVITY	DATE	ESTIMATED # OF IMPACTS	TARGET AUDIENCE
City of Pickens	PCSP, Dept. of Public Works	Used oil recycling containers, key chains, & brochures distributed at Cruise 'N and Music on Main	June 25, 2011	1,000	GP
City of Liberty	PCSP, Clemson Extension	Stormwater education booth at Liberty Idol	June 25, 2011	50	GP
City of Easley	PCSP	Stormwater education booth and information on rain barrels and composting distributed at the Easley Farmers Market	August 20, 2011	250	GP, R
Duke Energy	Clemson Extension	Stormwater displays at the 5th Annual National Hunting and Fishing Day at the World of Energy at Oconee Nuclear Station	October 1, 2011	1,500	GP, NR, R, YT
City of Easley	PCSP	Kitchen sponges, rain gauges, pencils, & stormwater brochures were distributed at the Easley Fire Department Event	October 13, 2011	1,300	GP, R
SC Botanical Garden	PCSP, Clemson Extension	Rain pitcher & barrel painting & education at the SC Botanical Garden Heritage Festival	October 29, 2011	80	GP, YT
Clemson Extension	SC Master Gardener program	Booth on the Carolina Yards & Neighborhoods program promoting yard recognition and involvement at conference	March 16, 2012	125	GP, NR, R
City of Pickens	PCSP, Clemson Extension	Stormwater education booth at the Azalea Festival	April 21, 2012	10,000	GP
Clemson University	Clemson Extension	PCSP and Clemson Extension extra credit booth and exhibit at Clemson University Earth Day event	April 23, 2012	60	HE, YT
SC DHEC	Pickens County, PCSP, Clemson University, Tri County Technical College, Solid Green, Catbus, Anderson County, S.H. Carter Recycling	Lawn Mower Exchange, E-Waste and document shredding at the Tri-County Green and Blue Yard Event, stormwater display (7 lawn mowers exchanged)	April 28, 2012	20	GP, R



Presentations and Workshops

LEAD PROVIDER	SUPPORTING PARTNER	ACTIVITY	DATE	ESTIMATED # OF IMPACTS	TARGET AUDIENCE
Clemson Extension	PCSP, SCBG	CYN Workshop at the SC Botanical Garden	June 6, 2011	25	R
PCSP	Duke Energy, SC DNR, Clemson Extension	Enviroscape presentation for 5th graders at the Hunting and Fishing Day School Event	September 30, 2011	171	R, YT
PCSP		Enviroscape lesson at Holly Springs Elementary Garden Club	October 11, 2011	48	R, YT
International Erosion Control Association Southeast Chapter	Upstate Forever, SC DHEC, Anderson Co., City of Greer, Clemson U, PCSP, Carolina Clear, SCDOT	IECA Southeast Chapter South Carolina Erosion & Sediment Control Training and Field Day	October 20, 2011	213	T
SC DHEC, Sonoco Recycling	Clemson Extension, PCSP	South Carolina Green Steps Schools projects presentation	December 1, 2011	12	C, HE, R, YT
PCSP		Enviroscape presentation for 1st graders at Six Mile Elementary	December 15, 2011	45	YT
SC DHEC	PCSP	Green Driver Presentation at Daniel High School, Environmental Science class	January 9, 2012	16	YT
PCSP		Enviroscape presentation and training for Pickens High Science Club	January 17, 2012	14	YT
SC DHEC, PCSP	Pickens County Dept. of Public Works	Take Action for the Environment water quality, recycling, and composting presentations at Pickens High School	January 30-31, 2012	120	YT



Presentations and Workshops

LEAD PROVIDER	SUPPORTING PARTNER	ACTIVITY	DATE	ESTIMATED # OF IMPACTS	TARGET AUDIENCE
PCSP		Enviroscape lesson at Liberty High	January 31, 2012	10	YT
Clemson Extension	NRCS, Soil and Water	Multi-county Forestry Meeting by Anderson, Oconee, and Pickens County Extension offices	March 1, 2012	44	C, NR, R
PCSP	SC DHEC	Pickens High School Take Action for the Environment Field Trip to the Gwinnett Environmental and Heritage Center; wastewater treatment plant tour, water history, water testing	March 7, 2012	44	YT
PCSP	SC DNR	Enviroscape presentation, stormwater fish visit and creative writing at Pickens Middle; part of Trout in the Classroom	March 9, 2012	80	YT
City of Greer	Pickens County, City of Greenville, Spartanburg County	Contact Urban Green Stormwater Management and Rainwater Harvesting Technical Seminar	March 16, 2012	49	C, M, T
Clemson Extension	SC Master Gardener program	Presentation on how to deliver the Carolina Yards and Neighborhoods program	March 16, 2012	14	C, R
Duke Energy	Clemson Extension, PCSP	Enviroscape and water testing presentation at the World of Energy's Earth Day event	April 23, 2012	120	GP, YT
PCSP		Watershed Lesson for the Holly Springs Elementary Garden Club	April 24, 2012	24	R, YT
PCSP		Composting Lesson for 3rd graders at Pickens Elementary	April 26, 2012	18	YT
PCSP		Champions of the Environment Enviroscape Presentations	Ongoing	140	YT



Presentations and Workshops

ELECTED OFFICIALS BREAKFAST

LEAD PROVIDER	SUPPORTING PARTNER	ACTIVITY	DATE	ESTIMATED # OF IMPACTS	TARGET AUDIENCE
PCSP	Clemson Extension	Stormwater Elected and Appointed Officials Breakfast with guest speaker SC Representative Brian White	March 23, 2012	31	EA, M, T



STORMWATER SPEAKER SERIES

LEAD PROVIDER	SUPPORTING PARTNER	ACTIVITY	DATE	ESTIMATED # OF IMPACTS	TARGET AUDIENCE
Upstate Forever	PCSP, City of Greenville, Anderson County, City of Anderson	Stormwater Solutions for the Draft Construction Permit Speaker Series with guest speaker Warren Faircloth, the Faircloth Skimmer	February 16, 2012	62	C, M, T
Upstate Forever	PCSP, City of Greenville, Anderson County, City of Anderson	Stormwater Solutions for the Draft Construction Permit Speaker Series with guest speaker Dr. Bill Stringer, Clemson U. Agronomy, Vegetative Stabilization on Construction Sites	April 25, 2012	36	C, M, T





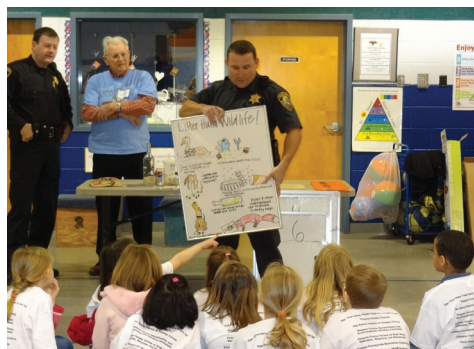
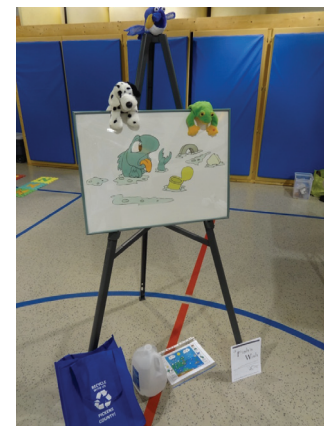
Presentations and Workshops

TRASH BASH

LEAD PROVIDER	SUPPORTING PARTNER	ACTIVITY	DATE	ESTIMATED # OF IMPACTS	TARGET AUDIENCE
Pickens County Beautification and Environmental Advisory Committee	Pickens County Dept. of Public Works, PCSP, SDPC	Pickens County Traveling Trash Bash visited 3rd grade classes in every elementary school in Pickens County	February - March 2012	1,263	YT



The Traveling Trash Bash (TTB) was presented to 3rd graders in all 16 Pickens County Elementary Schools in February and March, 2012, organized by the Pickens County Beautification and Environmental Advisory Committee (PCBEAC). This committee and the Pickens County Department of Public Works, the Stormwater Management Department, & PCSP presented the TTB. Students participating numbered 1263 in over 60 different classes. The goal of the Traveling Trash Bash is to teach environmental concepts in six main areas: recycling, composting, water conservation, beautification, litter prevention and stormwater run-off pollution.



Presentations and Workshops

CERTIFICATIONS

LEAD PROVIDER	SUPPORTING PARTNER	ACTIVITY	DATE	ESTIMATED # OF IMPACTS	TARGET AUDIENCE
Clemson Extension		Clemson's Department of Pesticide Regulation provides materials and testing for Commercial and Private Pesticide Applicators Licenses. Number of impacts reflects those that have been certified and are maintaining recertification credits in the upstate area	Exams given quarterly	81 (commercial and non-commercial)	C, R
Clemson University		CEPSCI Certification workshop held in Clemson	2011-2012	49	C, T

Construction and land disturbing activities have significant potential to adversely impact water quality. In 2004, Clemson University initiated the development and implementation of a program designed to inform individuals about important construction related best management practices (BMPs). The purpose of the Certified Erosion Prevention and Sediment Control Inspector Program (CEPSCI) is to educate field personnel on the proper installation, maintenance, and inspection of erosion prevention and sediment control measures.



The workshops teach attendees the latest techniques for erosion prevention and sediment control. It also introduces a variety of erosion control practices including the most environmentally effective techniques for different terrain. Instructors demonstrate how to review grading and drainage plans, as well as BMP details. Each participant is provided an opportunity to meet others involved in land disturbing activities and taught how to conduct a field inspection of erosion prevention and sediment control practices.



Presentations and Workshops

TRAININGS

LEAD PROVIDER	SUPPORTING PARTNER	ACTIVITY	DATE	ESTIMATED # OF IMPACTS	TARGET AUDIENCE
Clemson Extension		Pesticide Training for City of Easley Park & Recreation employees	June 29, 2011	5	M
Pickens County	PCSP	Pickens County Employee Training - Roads and Bridges Department	July 26, 2011	19	M
Pickens County	PCSP	Pickens County Employee Training for the Stormwater Industrial Permit	August 24, 2011	14	M
Clemson Extension		Pesticide Training for Pickens County employees	September 7-8, 2011	4	M
City of Easley		Public Works: Annual 3rd Party Training	November 9, 2011	36	M
City of Easley		Parks & Recreation: Annual 3rd Party Training	November 11, 2011	10	M
Pickens County	SC DHEC	Pickens County Employee Training for the Stormwater Industrial Permit	December 5, 2011	11	M
City of Easley		Public Works: Quarterly Safety Meetings	2011-2012	160	M
City of Easley		Parks & Recreation: Quarterly Safety Meetings	2011-2012	60	M

Soil Samples

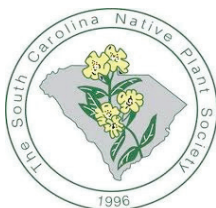
LEAD PROVIDER	SUPPORTING PARTNER	ACTIVITY	DATE	ESTIMATED # OF IMPACTS	TARGET AUDIENCE
Clemson Extension		Clemson Extension in cooperation with Clemson Agricultural Lab processed soil samples for residents and commercial audiences in Pickens County to determine the correct amount of fertilizer application	2011-2012	443	R, C

Rain Garden & Rain Barrel Installation Workshops

LEAD PROVIDER	SUPPORTING PARTNER	ACTIVITY	DATE	ESTIMATED # OF IMPACTS	TARGET AUDIENCE
Clemson University, PCSP, SCBG		Rainwater Harvesting & Rain Garden Installation & Workshop at the SCBG	June 16, 2011	25	GP, R



Clemson Extension, PCSP	SC DNR, SC Native Plant Society	Rain Garden & Rain Barrel Installation & Workshop at the Clemson DNR office	April 14, 2012	15	GP, R
-------------------------	---------------------------------	---	----------------	----	-------



Litter Sweeps

LEAD PROVIDER	SUPPORTING PARTNER	ACTIVITY	DATE	ESTIMATED # OF PARTICIPANTS	TARGET AUDIENCE
City of Pickens		A city wide cleanup day was held in Pickens along Highway 8. 20 bags of trash were collected by volunteers	April 14, 2012	9	GP, YT
Pickens High and Middle School	PCSP, Clemson Extension, Pickens County Beautification and Environmental Advisory Committee	Clean up by Pickens Middle & High School students on Highway 178	April 27, 2012	60	YT
Pickens County		5,550 bags of litter picked up on county roads by inmates	2011-2012	9	GP
SC DOT	Pickens County	Adopt-A-Highway Program	2011-2012	894	GP, R, YT

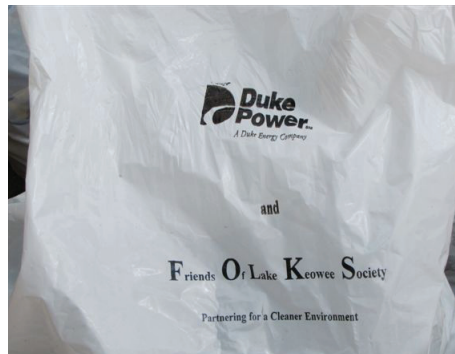


ADOPT - A HIGHWAY 2011

County	Total Pounds Collected	Total Miles Adopted	Total Groups Participating	Total Volunteers Participating
Pickens County	23,805	132	67	894

Litter Sweeps

LEAD PROVIDER	SUPPORTING PARTNER	ACTIVITY	DATE	ESTIMATED # OF PARTICIPANTS	TARGET AUDIENCE
Friends of Lake Keowee Society (FOLKS)	Duke Energy	FOLKS Annual Lake Sweep	September 17, 2011	200	B, GP, R
Save Our Saluda		Fall River Sweep hosted by Save Our Saluda, 43 bags, 800 lbs	September 17, 2011	12	GP
Corps of Engineers	Lake Hartwell Association	Hartwell Lake Annual Clean Up Campaign, 2100 lbs	September 24, 2011	512	B, GP, R, YT



Hartwell Lake Clean-Up Wrap-Up

The Corps of Engineers Hartwell Lake Office, in partnership with the Lake Hartwell Association, hosted the annual Hartwell Lake Clean-Up Campaign from August 15 until September 24, 2011. This annual campaign began more than 30 years ago and is part of the National Public Lands Day, Georgia's statewide Rivers Alive, and South Carolina's statewide Beach Sweep River Sweep programs.

Year 2011 Results:

- 2100 pounds of litter collected
- 512 total participants
- Approximately 92 miles of shoreline cleaned up
- Most common item collected - aluminum beverage can
- Most interesting item collected - push lawn mower

Time it takes for litter to decompose in the environment:

Orange or banana peel (2-5 weeks)
Newspaper (6 weeks)
Cigarette filter (up to 5 years)
Aluminum can (80-200 years)
Plastic bottle (450 years)
Monofilament fishing line (600 years)
Glass bottle (1 million years)
Styrofoam container (1 million years)
Sources: U.S. National Park Service; Mote Marine Lab, Sarasota, FL and "Garbage In, Garbage Out," Audubon magazine, Sept/Oct 1998.

Keeping litter out of Lake Hartwell and its watershed not only preserves the beauty of the lake, but also protects water quality and wildlife.

Thanks to all participants! Start planning for the 2012 Clean-Up!

Year 4 Highlight - Water 'n' Wildlife Day

LEAD PROVIDER	SUPPORTING PARTNER	ACTIVITY	DATE	ESTIMATED # OF IMPACTS	TARGET AUDIENCE
Clemson Extension, PCSP	Corps of Engineers, SC DNR, Clemson Outdoor Lab, Lake Hartwell Association, Master Naturalists, Clemson Solid Green	Water 'n' Wildlife Partners Project Day held at Lake Hartwell and the Clemson Experimental Forest	March 31, 2012	55	GP, HE, NR, R, YT

Volunteers participated in the "Water 'n' Wildlife" Day which was held on Saturday, March 31 to help protect the water quality and wildlife habitat of Lake Hartwell and the Clemson Experimental Forest. The 17,500 acre Clemson Forest has 100 miles of Lake Hartwell shoreline with many streams that flow through the forest on their journey to the lake.

Volunteers worked at the Clemson University Outdoor Lab and at the Corps of Engineers Twin Lakes Recreation Area, which are located in the Clemson Forest adjacent to Lake Hartwell, to plant native trees, pick up litter, repair old and install new wood duck boxes, install bluebird, wren, and butterfly boxes, build an owl house, and conduct a shoreline survey. Volunteers also enjoyed a picnic lunch provided by the Lake Hartwell Association, and heard speakers who discussed forest management and water quality of Lake Hartwell.



Bin & Barrel Sale

LEAD PROVIDER	SUPPORTING PARTNER	ACTIVITY	DATE	ESTIMATED # OF IMPACTS	TARGET AUDIENCE
Pickens County	PCSP	Rain Barrel & Compost Bin Sale	August 27, 2011	131	GP, R



Partner Committee Meetings

LEAD PROVIDER	SUPPORTING PARTNER	ACTIVITY	DATE	ESTIMATED # OF IMPACTS	TARGET AUDIENCE
Clemson Extension		Pickens County Extension Advisory Committee Meeting	June 23, 2011	14	M, R, T
Pickens County Stormwater Partners		Quarterly Meetings	2011-2012	34	M, T
Pickens County Beautification and Environmental Advisory Committee		Board Meetings	2011-2012	50	M, R, T
Friends of Lake Keowee Society		Board Meetings	2011-2012	80	B, R
Lake Hartwell Association		Board & Technical Committee Meetings	2011-2012	60	B, R
Clemson University		Solid Green Board Meetings	2011-2012	40	HE
Upstate Forever		Upstate Stormwater Managers Meetings	2011-2012	27	T

Programs

MASTER GARDENER

LEAD PROVIDER	SUPPORTING PARTNER	ACTIVITY	DATE	ESTIMATED # OF IMPACTS	TARGET AUDIENCE
Clemson Extension	SC DNR, SCBG	Master Gardener - Upstate; 40 volunteer hours required per year	Spring 2012	31	GP, R



MASTER NATURALIST

Clemson Extension	SC State Parks, SC DNR, PCSP, SCBG	Master Naturalist - Upstate; 30 volunteer hours required per year	August - November 2011	20	GP, R
-------------------	------------------------------------	---	------------------------	----	-------



CAROLINA YARDS & NEIGHBORHOODS

LEAD PROVIDER	SUPPORTING PARTNER	ACTIVITY	DATE	ESTIMATED # OF IMPACTS	TARGET AUDIENCE
Clemson Extension	PCSP	Carolina Yards and Neighborhoods - Certified Yards in Pickens County	2011-2012	3	GP, R





Youth Involvement

LEAD PROVIDER	SUPPORTING PARTNER	ACTIVITY	DATE	ESTIMATED # OF IMPACTS	TARGET AUDIENCE
Pickens County 4-H	PCSP, Corps of Engineers, Lake Hartwell Association, SC DNR, SCBG	4-H2O Day Camp on Lake Hartwell at Twin Lakes Recreation Area	July 25-28, 2011	14	YT



Clemson Extension	PCSP, SCBG, SC DNR, SC State Parks	Jr. Naturalist program introducing children to natural resources	2011-2012	22	YT
-------------------	------------------------------------	--	-----------	----	----





Youth Involvement

STORM DRAIN MARKING

LEAD PROVIDER	SUPPORTING PARTNER	ACTIVITY	DATE	ESTIMATED # OF IMPACTS	TARGET AUDIENCE
PCSP	Holly Springs Elementary	Marked storm drains at Holly Springs Elementary	2011-2012	20	YT
PCSP	Pickens Elementary	Marked storm drains at Pickens Elementary	2011-2012	19	YT
PCSP	Pickens Middle	Marked storm drains at Town Creek & City of Pickens	Ongoing	60	YT



RAIN GARDEN INSTALLATIONS

LEAD PROVIDER	SUPPORTING PARTNER	ACTIVITY	DATE	ESITMATED # OF IMPACTS	TARGET AUDIENCE
PCSP	Holly Springs Elementary, Native Plant Society	Bioswale installed at Holly Springs Elementary to prevent erosion and ponding and to channel stormwater to storm drain	2011-2012	48	YT



Youth Involvement

RAIN BARREL PAINTING & INSTALLATIONS

LEAD PROVIDER	SUPPORTING PARTNER	ACTIVITY	DATE	ESTIMATED # OF IMPACTS	TARGET AUDIENCE
PCSP	Pickens Middle	Rain barrels for Pickens Co. Education Building & Chamber of Commerce	2011-2012	30	YT
PCSP	Holly Springs Elementary	Rain barrel for school garden	2011-2012	20	YT
PCSP	Pickens Elementary	Rain barrel for school garden	2011-2012	16	YT
PCSP	Liberty High	Rain barrel for Liberty City Hall	2011-2012	12	YT



PCSP	Six Mile Elementary, Soil and Water District, Clemson Extension	Rain barrel for school garden, seed planting	2011-2012	45	YT
------	---	--	-----------	----	----



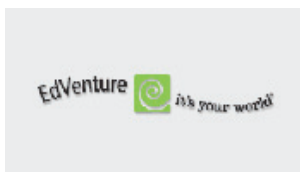


Youth Involvement GREEN STEPS PROGRAM

LEAD PROVIDER	SUPPORTING PARTNER	ACTIVITY	DATE	ESTIMATED # OF IMPACTS	TARGET AUDIENCE
SC DHEC, Sonoco Recycling	Liberty High, PCSP	Protect Water Projects	Ongoing	12	YT
SC DHEC, Sonoco Recycling	Pickens Middle, PCSP	Protect Water, Protect Air, and Conserve - Recycling Projects	Ongoing	360	YT
SC DHEC, Sonoco Recycling	Pickens Elementary, PCSP	Protect Water and Restore Habitat Projects	Ongoing	360	YT
SC DHEC, Sonoco Recycling	Holly Springs Elementary, PCSP	Protect Water and Restore Habitat Projects	Ongoing	57	YT



KEEP THE MIDLANDS
BEAUTIFUL



Youth Involvement

TAKE ACTION FOR THE ENVIRONMENT



LEAD PROVIDER	SUPPORTING PARTNER	ACTIVITY	DATE	ESTIMATED # OF IMPACTS	TARGET AUDIENCE
SC DHEC	Pickens High, PCSP, Clemson Extension, Pickens County Dept. of Public Works	Take Action for the Environment - "Water Wheel of Life Project": composting, recycling, water testing, buffer planting, water history research, & displays	Ongoing	120	YT



CHAMPIONS OF THE ENVIRONMENT

SC DHEC	Pickens Middle School, Clemson Extension, PCSP	Champions of the Environment - "Watershed Connections": Storm drain marking, GPS, litter pickup and water testing	2011-2012	140	YT
---------	--	---	-----------	-----	----



Year 4 Summary

The Pickens County Stormwater Partners (PCSP), formerly the Pickens County Stormwater Consortium, worked together with educational partners to increase awareness of stormwater and water quality issues. Steps were taken toward the PCSP goal to develop and implement a broad-based education program that informs citizens about the issues of stormwater management and explains the important role of each individual and their community in solving these issues.

Stormwater education efforts focused on general stormwater awareness with emphasis on fecal coliform bacteria from pet waste, nutrients from landscape practices, litter, sediment from erosion on construction sites, and other sources. Educational efforts also focused on other pollutants moving through our watersheds due to stormwater runoff, and methods included mass media campaigns, website pages, publications, articles, presentations, event exhibits, programs, and outreach materials. Public involvement to prevent stormwater pollution included community litter pick ups, storm drain marking, surveys, meetings, rain barrel and rain garden installations, a rain barrel and compost bin sale, and youth programs.



Laurel Fork Falls, Pickens County



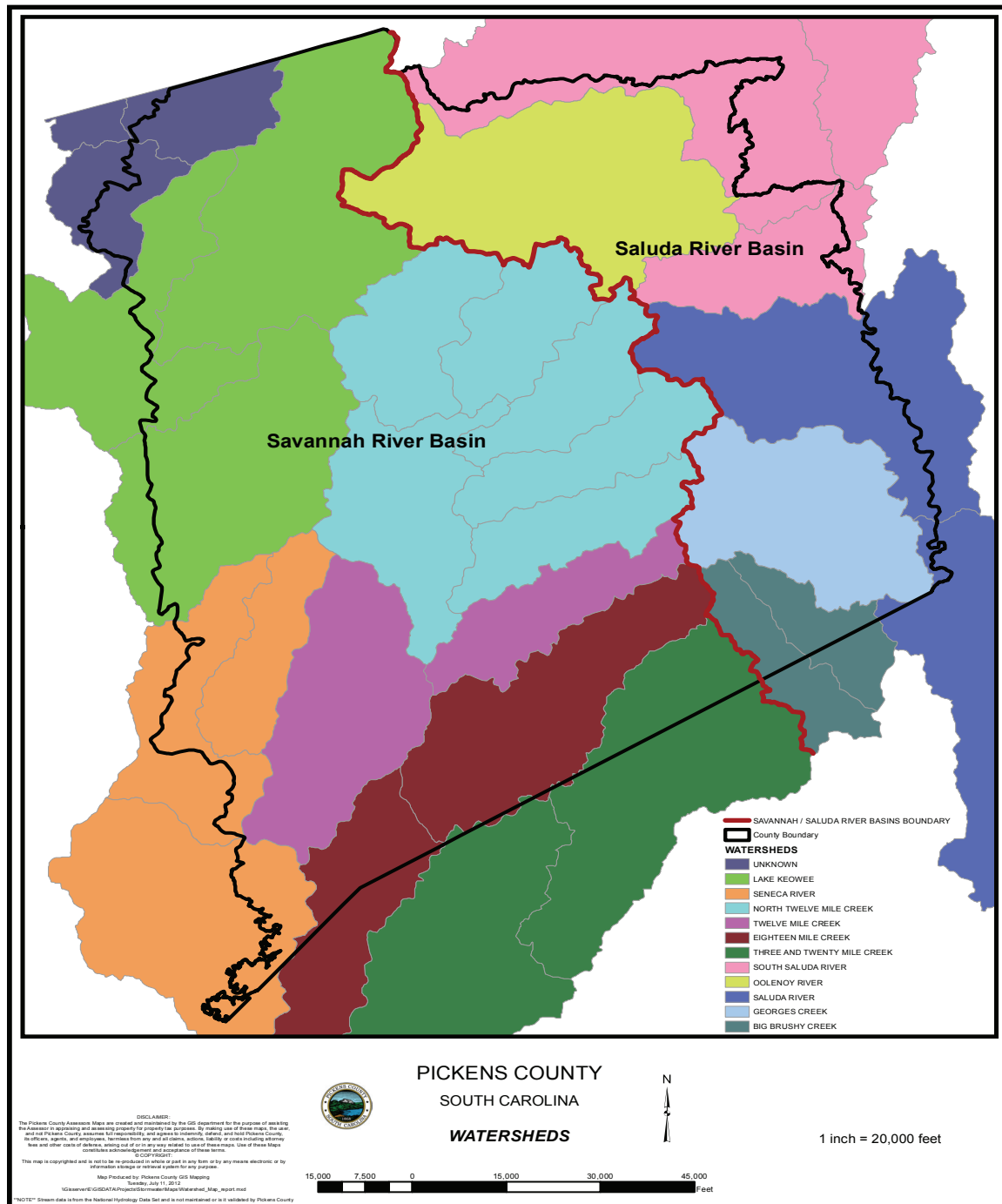
Recycle to

Protect our Water!

Pickens County

*Recycling Rate of 39.2%,
2nd highest in the state for 2011.*

Appendix A - Pickens County Watershed Map



Highlighted Article

PICKENS MIDDLE SCHOOL HONORED AS ...

Champion *of the* Environment

Water quality project noted

By Julie Howle

Pickens County News
jhowle@greenvillenews.com

A water quality project at Pickens Middle School that has students taking samples from a nearby creek and learning about storm drains has won the school recognition as a Champion of the Environment.

Pickens Middle was recognized for its "Watershed Connections" project, according to Amanda Ley, coordinator for the Champions of the Environment program for the state Department of Health and Environmental Control.

"Their watershed connections project is not only touching the students but the community itself, so (it's) helping to spread the importance of clean water and good water quality," Ley said.

She said a Champion of the Environment can be students in grades K-12 and their teachers carrying out an environmental project in South Carolina.

"They are doing an environmental education project that helps them learn more about the environment, specifically the air, water and land," she said.

Ley said Pickens Middle received the recognition, and a \$2,000 grant to help implement the project, from the Champion's partnership, which includes state DHEC, International Paper, Sonoco Recycling Inc., WIS-TV in Columbia and WCSC-TV in Charles-



Pickens Middle School eighth-graders Jacob Johnson, left, Jacob Johnson and Madelyn Patterson spray paint a plastic, 55-gallon drum to be used as a rain barrel. PAUL BROWN/CONTRIBUTOR

ton, with additional support from the Environmental Education Association of South Carolina.

Up to eight Champions of the Environment grants are awarded each school year, and smaller cash awards are given to runners-up to implement their projects, Ley said.

Louise Hope, community education teacher at Pickens Middle, said as part of the project, students are testing water quality of Town Creek, which is near the school and feeds into the Twelve Mile River, which eventually feeds into Lake Hartwell.

Hope said students have picked up trash in and around the creek and will continue to participate in other creek cleanups, and they are coordinating with the city of Pickens to label storm drains.

"Storm drains feed directly into a nearby water source," she said. "They're learning how the storm drains connect to the creek so it's important not to dump within the storm

drain."

Hope said they will also place rain barrels throughout the Pickens area, and students will decorate paper grocery bags with environmental messages in the spring for Ingles in Pickens.

"It's a long-term educational thing where the kids really learn about their surroundings and how they can make a difference in the environment," she said.

In addition, Hope said, they are partnering with the city of Pickens on a Turtles on the Town project, which is an effort to place bronze turtles around downtown Pickens, much like Mice on Main in Greenville and Toads on Trade in Greer. Turtles on the Town will teach about water quality and how it affects the habitats of animals, she said.

Hope said that for the past 10 years she has involved her team with environmental projects throughout the community, from Town Creek Trail and Hagood Mill to Table Rock State Park, but this is the

first year for the Watershed Connections project at Town Creek.

Eighth-graders are conducting field work, such as testing water quality, labeling storm drains and making rain barrels, and students in all grades are helping with projects, such as Turtles on the Town and decorating grocery bags.

Hope said it's important for children to connect with their community.

"They need to realize that they are part of a bigger community and they can have a positive effect on their community," Hope said.

She said they are doing the projects with the help of Pickens County Stormwater Partners, Clemson Extension Service and the city of Pickens.

Ley said as part of the recognition for Pickens Middle, a commercial has been made about the project and is airing on WIS-TV in Columbia and WCSC-TV in Charleston, and the school will be featured on the Champion's website, scdhec.gov/champions.

Highlighted Article

Saturday/10.1.11/www.independentmail.com

local/13a

Oconee County

Duke outing lets youngsters connect to nature

BY RAY CHANDLER
Special to Independent Mail

SENECA — Nature faces stiff competition from the latest video game, according to teachers, but events such as the annual outing for National Hunting and Fishing Day at Duke Energy's World of Energy can score a win for the outdoors.

Friday, about 175 fifth-graders from Clemson and Tamasee-Salem elementary schools got a preview of the events that will be open to the public today.

This year is the fifth time Duke Energy has hosted the annual Outdoor Family Adventure as homage to families and the great outdoors.

Every year, the fifth-graders of two local schools get a first look at the events, said Sandra Magee, Duke Energy spokeswoman.

"The whole idea is to get kids back outdoors," said Angela Viney of Upstate Forever, one of the event's sponsors. "If they learn to love the outdoors, they'll want to preserve the outdoors, and we'll have conservationists for the future."

She said, "For many of them, these are new experiences. They learn how to bait a hook, and they learn what it's like to have a fish

on the other end of the line. Those are things you can't teach any other way."

Fishing, both actual and in a fishing simulator, is just one of the activities. Kayaking, air rifle shooting, hide-and-seek camouflage games, fly tying, campsite safety, retriever demonstrations, hands-on experience with wildlife and learning about boating and hunting safety are also part of the program. And there are some conservation messages.

"We try to reach out to youth so they'll appreciate our natural resources," said Cathy Reas-Foster of the Pickens County Clemson Extension Service.

Reas-Foster makes presentations about the relation of environmental conservation principles to landscaping.

"Here, I'm helping them better understand watersheds and how water runoff can cause pollution," she said.

More than three dozen conservation agencies will be on hand today with presentations on protecting Upstate South Carolina's natural resources.

Kim Farley, a fifth-grade teacher at Clemson Elementary, said the preview



Cathy Reas-Foster gives a demonstration of environmental effects of water runoff.

RAY CHANDLER Special to Independent Mail

day for school kids gives many a chance to experience things they might not otherwise.

"About half of our kids might have a chance to come with their families tomorrow, but the other half probably wouldn't," Farley said. "And the kids love it. They give them their targets from

the BB gun shooting, and some of them say 'We're going to keep these forever.' It's wonderful."

Robert Cook, Duke Energy's chief organizer for the event, said response to Friday's preview for the children bodes well for a good turnout today.

"We just want to get peo-

ple engaged in the outdoors," Cook said. "We invite people to come out and have fun. It's free, and it's fun."

Last year's event drew about 3,000 people.

The Outdoor Family Adventure will run from 9 a.m. until 3 p.m. today at the World of Energy center and

the adjoining park off S.C. 130 north of Seneca. All activities and parking are free with a shuttle service provided from the event parking area off S.C. 130. Guests can take their own picnic lunches or purchase food from the on-site vendor.

National Hunting and Fishing Day has only been observed since 1972. But according to the event website, the roots go back more than 100 years. Hunters and fishermen joined with conservationists, informally led by avid hunter and conservationist President Theodore Roosevelt, calling for conservation measures that would preserve wildlife while promoting outdoor activities making use of natural resources.

This year's event is sponsored by Duke Energy, Upstate Forever, Trout Unlimited, Clemson University Extension, the South Carolina Department of Natural Resources, Clemson University 4-H Shooting Sports, Trout Unlimited, Clemson Extension 4-H, South Carolina Wildlife Federation, Harry Hampton Memorial Wildlife Fund, The Weatherby Foundation and Calm Water Kayak Tours in Ware Shoals.

Highlighted Article

The Garden's Gate from the South Carolina Botanical Garden

January - March 2012

Inside this issue

Page 2

Interim Director's Message

Page 3

News from the Garden

Page 4

Education Update

Page 5

The Geological Record

Pages 5-9

Calendar: Classes and Events

Page 9

Volunteer Spotlight

Page 10

Gardeners Notebook

Page 10-11

Friends & GeMS

Page 12

Gardening Green



Katie and John Vatis painting water pitchers at the Heritage Festival

**Mark your calendars for
the Spring Plant Sale on
April 20 and 21!**

SOUTH CAROLINA
BOTANICAL GARDEN
where nature and culture meet

Follow the path of a raindrop

What happens to water in your landscape?

Does it soak in, keeping your trees, shrubs, and perennials growing?

Or, does it race down eroded channels to the nearest storm sewer, or do something in between?

We have all of these situations at the

Garden, and while we're trying to correct our own stormwater challenges, we're also encouraging people to 'capture' rain in their landscapes with a demonstration rain garden, rain barrel, and a large cistern installed adjacent to the Hayden Conference Center/Hanson Nature Learning Center building.



Painted rain barrel and watering can

If there are areas of your landscape that shed water (think hard surfaces and lawns), consider modifying your landscape by adding a rain garden to trap and filter the runoff.

Keeping stormwater and accompanying pollutants from streams, rivers, and lakes reduces environmental degradation and just makes sense!

~ Lisa Wagner
Director of Education



Newly planted rain garden adjacent to Hayden Conference Center

Partnerships with Pickens County Stormwater Partners, CU Carolina Clear, and the School of Agricultural, Forest, and Environmental Sciences have supported these installations, soon to be accompanied by interpretive signage.

Rain gardens absorb and filter rainwater, in the same way natural vegetation and well-prepared landscape beds do. Placed in areas of high runoff, rain gardens trap stormwater that otherwise would run into storm drains, streams, and rivers, carrying sediment and other pollutants with it. Rainbarrels and cisterns divert water for later use, but also help reduce runoff and erosion.



HCC rain garden plants laid out

The Garden's Gate • 1

Appendix C - Fliers and Posters



Stormwater is the runoff from rain or irrigation systems and everything it picks up along the way. As stormwater travels across the landscape, **it picks up oil, sediment, metals, debris, nutrients and bacteria and deposits them in our lakes, streams and rivers. Stormwater pollution is the greatest threat to our water resources** – our drinking water supplies, fishing holes, swimming beaches and the waterbodies that we use and enjoy.



Here are things you can do as a homeowner to reduce stormwater pollution:

- BE CAREFUL NOT TO OVER-FERTILIZE OR FERTILIZE RIGHT BEFORE IT RAINS.** You may be throwing money down the drain by over-fertilizing. Your soil can be tested by your local Clemson Cooperative Extension office. The results of the test will tell you if your soil has enough nutrients already stored away to maintain a healthy lawn. If you need to amend your lawn with nutrients, read the directions. You may be applying more fertilizer than needed, and the excess nutrients end up in our lakes and rivers and lead to algae blooms and often to fish kills.
- PICK UP AFTER YOUR PET.** Pet waste contains harmful bacteria that affect our drinking water supplies. Plus, nutrients in the waste also add to potential algae blooms in our lakes. As for managing waste in your yard, there are several solutions – picking it up and putting it in the trash, flushing it down the toilet or purchasing/making a doggie loo or pet waste septic system.
- WASH YOUR CAR ON THE LAWN OR GRAVEL DRIVEWAY.** By washing your automobile this way, the runoff that includes soap and dirt infiltrates and is treated naturally by the environment. You will minimize the runoff that goes to the storm drain and flushes directly to our lakes, rivers and estuaries. There are also low-phosphorus, biodegradable soaps that can be used that will do less harm to the environment.
- GRASS CLIPPINGS AND LEAVES DO NOT BELONG ON THE STREET.** Grass and leaves take time to decompose and can cause clogs in drains and outlets causing backups and flooding. The nitrogen and nutrients in these materials can also harm the natural balance in waterways. There are several alternative solutions for what to do with leaves and clippings such as bagging them for recycling, using a mulching mower to spread them on your lawn as natural fertilizer, or placing them in a compost pile to speed the microbial process.

To learn more, visit
www.clemson.edu/carolinaclear

Clemson University offers its programs to people of all ages, regardless of race, color, sex, religion, national origin, disability, political beliefs, sexual orientation, marital or family status and is an equal opportunity employer.

Appendix C - Fliers and Posters

Leaf it on the Lawn: Tips for Proper Yard Debris Disposal

Did you know that stormwater
is the *leading* threat to water quality?

Yard debris can be transported to stormwater pipes and waterways, causing problems for you and your community.

- Yard debris can clog stormwater pipes, causing flooding and costly maintenance, which may be passed on to homeowners.
- As yard debris decomposes, nutrients such as nitrogen and phosphorus are released into the water. This causes algae blooms, which are unsightly and can kill fish.

free Fertilizer, Anyone?

- Grass clippings and leaves return nutrients and water to the soil. Mulching mowers may be more efficient but several passes with any rotary mower will yield the same results with no impacts on turf.
- Use a blower or broom to keep grass clippings and leaves in the yard instead of blowing them into the street.

If you must dispose of yard waste, compost it or bag it for pick up.

Remember, South Carolina, *we all live downstream!*
You can be the solution to stormwater pollution!

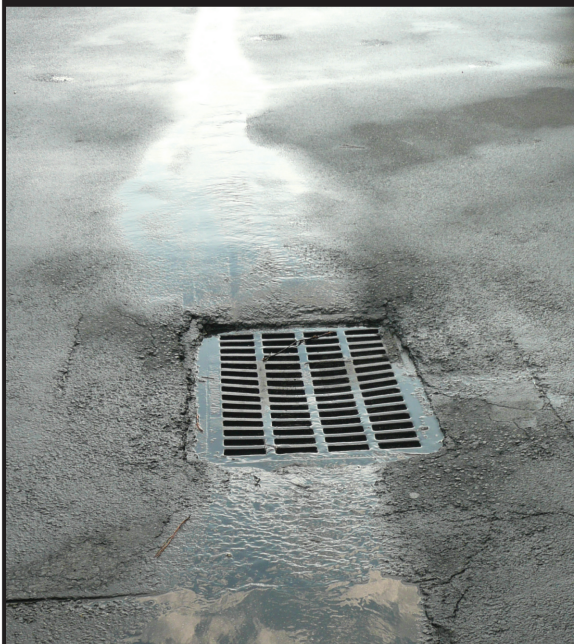
PICKENS COUNTY
stormwater
PARTNERS
A PUBLIC SERVICE OF CLEMSON UNIVERSITY



For more information:
Pickens County Stormwater Management Department (864) 898-5789

Appendix C - Fliers and Posters

We all live downstream.



Rainwater that runs over the land can pick up dirt, oil, pesticides, bacteria, and fertilizers and wash them into our ditches, rivers and estuaries. This form of pollution has become America's greatest threat to surface water, and is known as *STORMWATER POLLUTION*.

Learn more about what you can do to prevent stormwater pollution online at www.clemson.edu/carolinaclear.

To report a stormwater problem
or to find out more information, please call the
Pickens County Stormwater Management Department at
(864) 898-5789.

Appendix C - Fliers and Posters

PROTECT OUR WATER *Pick Up Pet Waste*

🐾 **Bag and Toss it!**

(in the trash.)

🐾 **Bury it!**

(in a 12-inch deep hole away
from gardens or water sources;
it is not fertilizer or compost.)

🐾 **Flush it!**

(and maintain your septic tank.)

Pet waste is a source of water pollution.

- It contains bacteria (fecal coliform), parasites, viruses and nutrients (nitrogen and phosphorus), which can be harmful to our health and the environment.
- It can be carried into our creeks, rivers and lakes by stormwater runoff.

Protect Our Water...Scoop the Poop!

For more information contact:
Pickens County Stormwater
Management Department
www.co.pickens.sc.us
(864) 898-5789



Appendix C - Fliers and Posters

STORMWATER SOLUTIONS

for the draft Construction General Permit

Warren Faircloth, J.W. Faircloth & Son, Inc.
presenting

The FAIRCLOTH SKIMMER – Surface Drains for Dewatering Sediment Basins

The CGP requirements for water surface dewatering:

“When discharging from basins and impoundments, the SWPPP is required to utilize devices that allow the outlet structure to only withdraw water from an elevation equivalent to the 10-year Water Surface Elevation and lower.”

Thursday, February 16, 2012

12 noon to 1:00 p.m.

TD Convention Center, 1 Exposition Drive, Greenville, SC 29607

Lunch will be provided.

There is no cost to attend. Seating is limited.

Please RSVP by 2/6/12.

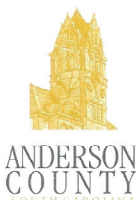
Check-in and lunch will begin at 11:30 a.m.

One Professional Development Hour available for engineers and surveyors.

For more information or to register, please contact

Erika Hollis at Upstate Forever, 250-0500, ext. 17 or ehollis@upstateforever.org.

Sponsored by:



Appendix C - Fliers and Posters

SAVE WATER - REDUCE WASTE



RAIN BARREL & COMPOSTER SALE

Pickens County, South Carolina

www.PickensBarrelAndBinSale.com



Event Day Price: \$69.00
Pre-Order Price \$64.00



Event Day Price \$60.00
Pre-Order Price: \$55.00

WHEN: 8am to 2pm, Saturday, August 27th-RAIN OR SHINE

WHERE: Town N' Country Shopping Center, Hwy 123, Easley, SC

Rain Barrels and Compost Bins Are Sold and Distributed
by The Rain Barrel Depot. For additional information
or to pre-order items, **visit: pickensbarrelandbinsale.com**

The first 50 purchasers will receive a free outdoor rain gauge.
Demonstrations on the usage of rain barrels and compost bins
will be held at 9am, 11am and 1pm.

For additional questions, contact
Lou Holder - Recycling Director
louiseh@co.pickens.sc.us or 864-506-3999

Event sponsored by Pickens County Recycling,
Pickens County Stormwater Partners and Clemson University Carolina Clear.

Appendix C - Fliers and Posters



Mow Down Pollution
LAWN MOWER EXCHANGE PROGRAM

Cutting a path for a greener South Carolina

Tri-County Green and Blue Yard Event

PROTECT LAND, WATER, AND AIR

Tri-County Technical College – Pendleton Campus
7900 Highway 76, Pendleton SC 29670

Saturday, April 28th, 2012 * 8 am until Noon

Lawn Mower Exchange Event

Trade your gasoline-powered lawn mower for a discount towards the purchase of an electric mower.

No Trade In—No Problem
Discount still available
(Credit or Debit Cards preferred)

For more information visit:
www.scdhec.gov/lawnmowerexchange



E-Waste and Document Shredding Available

New S.C. law regulates the disposal of electronic waste in specified areas. Bring your electronics such as cell phones, computer monitors, cameras, etc.

Secure document shredding will also be available free of charge.

Learn how you can help improve air, soil, and water quality with educators. Stop at the information tent for green landscaping tips, rain barrel, compost, and recycling displays.

Brand/Model	MSRP	Event Price
Black & Decker		
SPCM1936	\$499.00	\$375.00
CM1936	\$449.00	\$325.00
CM1836	\$329.00	\$250.00
MM1800	\$229.00	\$160.00
C Enterprise/The Greenstation		
DM20	\$449.00	\$355.00
LN 1	\$399.00	\$299.00
LN 2	\$418.00	\$345.00
Preferred Power		
WG783	\$199.99	\$199.99
WG780	\$449.99	\$399.00
WG788	\$429.99	\$429.99
WG789	\$529.99	\$499.99

Why trade-in your gasoline-powered mower? Here are a few good reasons.

- * No gas or oil is required for an electric mower.
- * Electric mowers are low maintenance and require no annual tune ups.
- * These mowers are cost effective — charge battery vs. purchasing fuel.
- * Electric mowers have hassle-free starting.
- * There are no emissions or accidental oil/fuel spills.
- * Electric mowers create less noise pollution and are virtually silent.



Adaptive Education Plan, Page 1 of 2 May 2011- April 2012

Pickens County Stormwater Partners (PCSP) ADAPTIVE Stormwater Education Plan														
May 1, 2011 - April 30, 2012			Pickens County, City of Easley, City of Liberty, City of Pickens										Living Document (last revised: 8/1/2011)	
Lead Service Provider	Activity--Program (<i>Italics include participation elements</i>)	Target Geography/ Land Use	Target Pollutant(s)										Participation by other Service Providers	Date
			General Stormwater Awareness	Bacteria	Toxic Contaminants, petroleum products, pesticides, heavy metals	Sediment	Nutrients	Pollutants resulting in low Dissolve Oxygen	Debris	Temperature	Other			
General Public														
Carolina Clear	Television Commercials and Public Access Channels	Pickens County	x											
Carolina Clear	Billboards	Pickens County	x										Pickens County	'11 - '12
Carolina Clear, PCSP	Water Quality Publications & Articles, Newsletters, Bill Stuffers	Upstate	x	x		x		x	x			x		'11 - '12
Greater Pickens COC	Azalea Festival	City of Pickens & Pickens County	x										Carolina Clear, Clemson Extension	April '11
City of Pickens	Cruisin in Pickens	City of Pickens	x			x							Carolina Clear	June '11
City of Liberty	Liberty Idol	Upstate	x										Carolina Clear	June '11
Carolina Clear	Pet Waste Stations, Educational Signs, & Flyers	Pickens County	x	x									SCPRT, SCDNR, USACE	Summer - Fall '11
City of Easley	City of Easley Farmer's Market	City of Easley	x										Carolina Clear	August '11
Pickens County Recycling	Rain Barrel/Compost Bin Sale	Pickens County	x										Pickens County, PCSP, Carolina Clear	August '11
Save Our Saluda	Saluda River Cleanup	Pickens County	x			x						x	Carolina Clear	Fall '11
Duke Energy	Outdoor Family Adventure Days	Upstate	x										Carolina Clear, Clemson Extension	October '11
Pickens County	Fitness Day	Pickens County	x										Carolina Clear	March '12
Carolina Clear, PCSP	Earth Day	Pickens County	x	x		x			x			x	Pickens County Solid Waste & Recycling	April '12
City of Pickens	River Sweep, Street Sweep	City of Pickens	x			x		x				x	Carolina Clear	April '12
Youth / K-12 / Teachers														
Carolina Clear	Green Steps Schools Program & Training	Pickens County	x										SCDHEC, SDPC	'11 - '12
Carolina Clear, PCSP	Storm drain marking program	Pickens County	x	x		x		x	x			x	x	SCPRT, SCDNR
SC DHEC	Take Action for the Environment	Pickens Co. High Schools	x	x		x		x	x		x	x	x	Carolina Clear, SDPC
Pickens County, Carolina Clear, Clemson Extension	Pickens County Environmental Education Building	Pickens County	x	x		x		x	x			x		Pickens Beautification, SDPC, Boy Scouts
Clemson Extension, Carolina Clear	4-H20 Pontoon Classroom	Pickens County	x	x		x		x	x		x	x	x	USACE, SCDNR, Lake Hartwell Association, SCBG
Clemson Extension, Carolina Clear	Junior Naturalist Program	Upstate	x	x				x	x			x	x	SCPRT, SCDNR, SCBG
Pickens County Beautification	Trash Bash	Pickens County	x	x		x		x	x			x		Pickens County, PCSP, Clemson Extension
Elected and Appointed Officials and Community Staff														
Pickens County & Carolina Clear	County and City Councils NEMO (Non-point education for municipal officials) presentation	Pickens County	x										Permit	tbd
Pickens County & Carolina Clear	Stormwater Luncheon for elected and appointed officials	Pickens County	x										TMDLs	March '12

8/1/2011

Adaptive Education Plan, Page 2 of 2 May 2011- April 2012

Pickens County Stormwater Partners (PCSP) ADAPTIVE Stormwater Education Plan														
May 1, 2011 - April 30, 2012			Pickens County, City of Easley, City of Liberty, City of Pickens										Living Document (last revised: 8/1/2011)	
Lead Service Provider	Activity--Program (<i>Italics include participation elements</i>)	Target Geography/ Land Use	Target Pollutant(s)										Participation by other Service Providers	Date
			General Stormwater Awareness	Bacteria	Toxic Contaminants, petroleum products, pesticides, heavy metals	Sediment	Nutrients	Pollutants resulting in low Dissolve Oxygen	Debris	Temperature	Other			
Commercial/Technical Professionals: Contractors, Engineers, Developers														
Pickens County	Best Management Practices (BMP's) Training for municipal employees	Pickens County	x		x	x			x			Carolina Clear	'11 - '12	
Clemson University	Forestry Continuing Education Courses	Pickens County			x	x	x		x				'11 - '12	
Upstate Forever	Upstate Stormwater Managers Meetings	Upstate	x								Permit	Pickens County	'11 - '12	
Carolina Clear, PCSP	Partnering for Water Quality presentation to the Chamber of Commerce & Rotary Clubs	Pickens County	x	x	x	x	x		x			Clemson Extension	'11 - '12	
Clemson University	CEPSCI (Certified Erosion Prevention and Sediment Control Inspector)	Pickens County				x	x						tbd	
Clemson Extension	Pesticide program for new licenses and recertification	Pickens County			x								Summer - Fall '11	
Upstate Forever	Stormwater Lecture Series	Upstate	x		x	x	x				Permit	Pickens County, Carolina Clear	Fall '11	
Clemson Extension	Slope stabilization/Erosion control demonstration sites	Pickens County	x			x						Master Gardeners	Fall '11	
IECA, Clemson University	IECA Erosion & Sediment Control training and field day	Upstate	x		x	x			x			Upstate Forever, Carolina Clear, PCSP	October '11	
Homeowners & Homeowner Associations														
Carolina Clear, PCSP, SCBG	Rain Garden installation & demonstration sites	Pickens County, SC Botanical Gardens	x		x		x			x		Master Gardeners, Master Naturalists, Native Plant Society	'11 - '12	
Clemson Extension	CYN training & promotions	Upstate	x				x	x				Carolina Clear	'11 - '12	
Carolina Clear, Clemson University	Clemson Forest, Lake Hartwell, and Lake Keowee Lakeshore Cleanups	Pickens County	x		x				x			Clemson Forest, Lake Hartwell Association, Friends of Lake Keowee, USACE, Duke Energy	Fall '11 - Spring '12	
Clemson Extension	Master Naturalist Program	Upstate	x	x	x	x	x	x	x	x		SCPRT, SCDNR, Carolina Clear	Fall '11	
Clemson Extension	Master Gardener Program	Upstate	x		x		x						Spring '12	
Pickens County	Lawn Mower Exchange	Pickens, Oconee, Anderson	x				x		x			SCDHEC, Duke Energy, Clemson University, Tri-County Tech	April '12	
PCSC Program Management														
Carolina Clear	Create Annual Report												'11 - '12	
Carolina Clear	Maintain Pickens County Stormwater Partners website												'11 - '12	
Carolina Clear	Maintain digital database to collect and analyze programmatic information												'11 - '12	
Carolina Clear	Recruit additional education providers to broaden and enhance activities												'11 - '12	

8/1/2011

Authors and Acknowledgements

CATHY REAS FOSTER

Pickens County Stormwater Partners Coordinator

BENNIE LANGLEY

Land Planning Associates,
City of Easley, Stormwater Representative

KATHERINE BRACKETT

City of Pickens Administrator

RENEE WATSON

Clemson Cooperative Extension - Pickens County

SCOTTIE FERGUSON

Pickens County Stormwater Manager

OLEN HAMLIN

City of Liberty Stormwater Manager

KATIE GIACALONE

Clemson Carolina Clear Coordinator

CHARLY MCCONNELL

Clemson Cooperative Extension - Pickens County



Carolina Clear is a program of Clemson University's Public Service Activities. Information is provided by Faculty and Cooperative Extension Agents. Clemson University Cooperative Extension Service offers its programs to people of all ages, regardless of race, color, sex, religion, national origin, disability, political beliefs, sexual orientation, marital or family status and is an equal opportunity employer.

Produced 06/2012



*Thanks to all of our partners for
a successful year in promoting
stormwater education!*



Printed on recycled paper



www.clemson.edu/carolinaclear



Follow us at www.facebook.com/pages/Carolina-Clear