



Clemson
University
Safety
Retreat

August 11, 2022

Tychem® in the News

DEA



Russian spy poison attack



Ebola



COVID-19



CNBC.COM

New York state has more coronavirus cases than France or South Korea as infections soar to 15,168

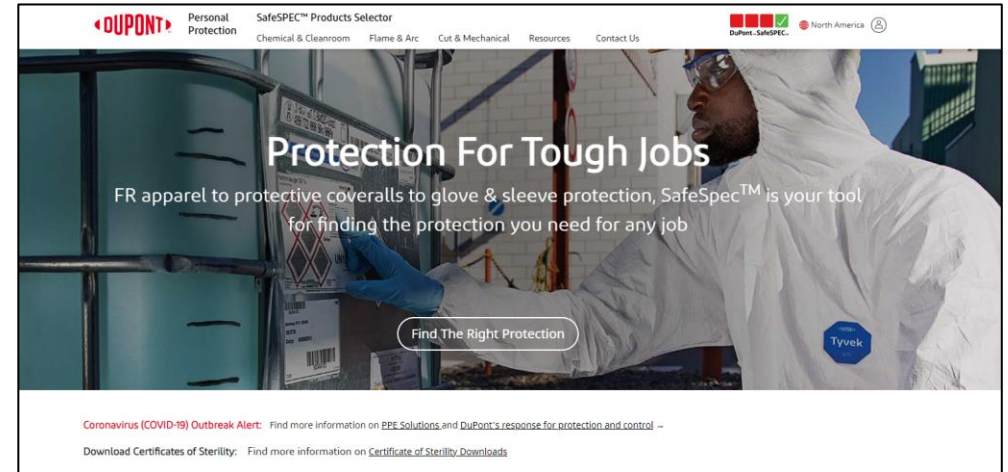
Working with DuPont

- **SafeSPEC™ Resources**

- Desktop DuPont™ SafeSPEC™
 - Visit at www.safespec.dupont.com
 - Literature, eCatalog and PDF catalog
 - Videos, product-specific information, FAQs
 - Hazard selector tool

- SafeSPEC™ Mobile

- Hazard scenarios, product portfolio all available on mobile
- Stay informed on Chemical Protective Apparel from any location
- Available in phone and tablet versions





Tyvek® 500 HV – Product Features

- Bright fluorescent orange color background material combined with silver gray retroreflective material for high visibility during day or night (when exposed to a light source)
- Retroreflective bands form a symmetric “X” on back to distinguish rearward or frontward orientation of wearer
- Meets single-use disposable coverall requirements of ANSI/ISEA 107-2020 Type R/Class 3 Section 11
- Offered in standard or hooded coverall with elastic wrists & ankles
- Relevant industries: Transportation (rail, ports, airports); Mining; Waste Handling; Construction



Tyvek® 400 D Series

Product Overview:

Tyvek® 400 D garments offer the “dual” benefits of protection and durability, due to the inherent features of Tyvek® fabric on the front, with breathability benefits of ProShield® 10 fabric on the back of the garment.

GARMENT DESIGN

Fabric: Tyvek® flashspun high-density polyethylene (white) barrier fabric on front and ProShield® 10 spunbond-meltblown-spunbond (SMS) fabric (blue) on back. Fabric Basis Weight: Tyvek® 1.2 oz/yd² and ProShield® 1.2 oz/yd²

Design: Coveralls with Serged seams. Attached respirator fit hood with elastic face opening. Front zipper with storm flap. Thumbhole on sleeve. Elastic wrists/waist/ankles.

PROTECTION BENEFITS

- Durable barrier to fine particles and light liquid splash (front) and non-hazardous dry particles (back).
- Resistant to resins that stick to or delaminate garments.
- Designed for workers involved in strenuous activities.

PERFORMANCE CHARACTERISTICS

KEY FEATURES



Attached respirator fit hood with elastic face opening

Front zipper with resealable storm flap

White Tyvek® barrier fabric front, arms & hood

Blue SMS fabric full back & leg panels



Style TD127S

Garment sizes & options vary by style

COLOR OPTIONS



MARKET OPPORTUNITY

Respond to worker needs for dual benefits of breathability, combined with barrier protection against exposure to fine particles and light liquid splash, such as in environments like painting and finishing operations

APPLICATIONS

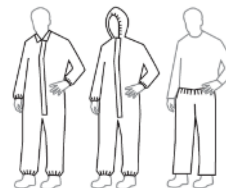
Manufacturing Operations including Boats & Wind Turbine & Composites & Glass products, General Maintenance, Painting & Finishing

INDUSTRIES

Energy, Environmental Services, Manufacturing, Utilities

GARMENT OPTIONS

Sizes: MD-5XL



REFERENCE LINKS

[Tyvek® 400 D SafeSPEC Landing Page](#)
[Tyvek® 400 D Product Overview Sheet](#)